

District II) **DEPUTY**
Drawer DD, Artesia, NM 88221

District III
1000 Rio Brazos Rd, Aztec, NM 87410

Energy, Minerals and Natural Resources Department

SUBMIT 1 COPY TO
APPROPRIATE
DISTRICT OFFICE
AND 1 COPY TO
SANTA FE OFFICE

DEPUTY OIL & GAS INSPECTOR

OIL CONSERVATION DIVISION

2040 South Pacheco Street
Santa Fe, New Mexico 87505

OCT 28 1997

PIT REMEDIATION AND CLOSURE REPORT

Approved

Operator: PNM Gas Services (Burlington) **Telephone:** 324-3764

Address: 603 W. Elm Street Farmington, NM 87401

Facility or Well Name: Lawson #1A

Location: Unit D Sec 12 T 31 N R 11 W County San Juan

Pit Type: Separator ☒ Dehydrator ☒ Other ☐

Land Type: BLM ☒ State ☐ Fee ☐ Other ☐

Pit Location: Pit dimensions: length 18 ' width 18 ' depth 3 '

(Attach diagram) Reference: wellhead ☒ other

Footage from reference: 79'

Direction from reference: 58 Degrees ☒ East of ☒ North
☐ West of ☐ South

Depth to Ground Water:

Less than 50 feet	(20 points)
50 feet to 99 feet	(10 points)
Greater than 100 feet	(0 points)

(Vertical distance from contaminants to seasonal high water elevation of ground water)

Wellhead Protection Area:

(Less than 200 feet from a private domestic water source, or, less than 1,000 feet from all other water sources)

Yes (20 points)
No (0 points)

Distance to Surface Water:

Less than 200 feet	(20 points)
200 feet to 1,000 feet	(10 points)
Greater than 1,000 feet	(0 points)

(Horizontal distance to perennial lakes, ponds, rivers, streams, creeks, irrigation canals and ditches)

RANKING SCORE (TOTAL POINTS): 0

Lawson #1A

Date Remediation Started: 4/22/97

Date Completed: 4/28/97

Remediation Method:

Excavation ☒

Approx. Cubic Yard 123

(Check all appropriate sections)

Landfarmed ☒

Amount Landfarmed (cubic yds) 123

Other _____

Remediation Location:

Onsite ☒

Offsite _____

(i.e., landfarmed onsite, name and location of offsite facility)

Backfill Material Location: _____

General Description of Remedial Action:

Excavated contaminated soil to a pit size of 19' x 25' x 7' and landfarmed soil onsite within a bermed area of 6" to 12". Soil was aerated by disking/plowing until soil met regulatory levels.

Ground Water Encountered:

No



Yes



Depth _____

Final Pit Closure Sampling:

Sample Location

Center of pit bottom.

(if multiple samples, attach sample result and diagram of sample locations and depths.)

Sample depth

7'

Sample date

4/22/97

Sample time

11:30:00 AM

Sample Results

Benzene (ppm)

0.0000

Total BTEX (ppm)

0.0150

Field headspace (ppm) _____

TPH (ppm)

0.00

Method

8015A

Vertical Extent (ft) _____

Risk Assessment form attached

Yes

No



Ground Water Sample:

Yes



No



(If yes, see attached Groundwater Site Summary Report)

I HEREBY CERTIFY THAT THE INFORMATION ABOVE IS TRUE AND COMPLETE TO THE BEST OF MY KNOWLEDGE AND MY BELIEF

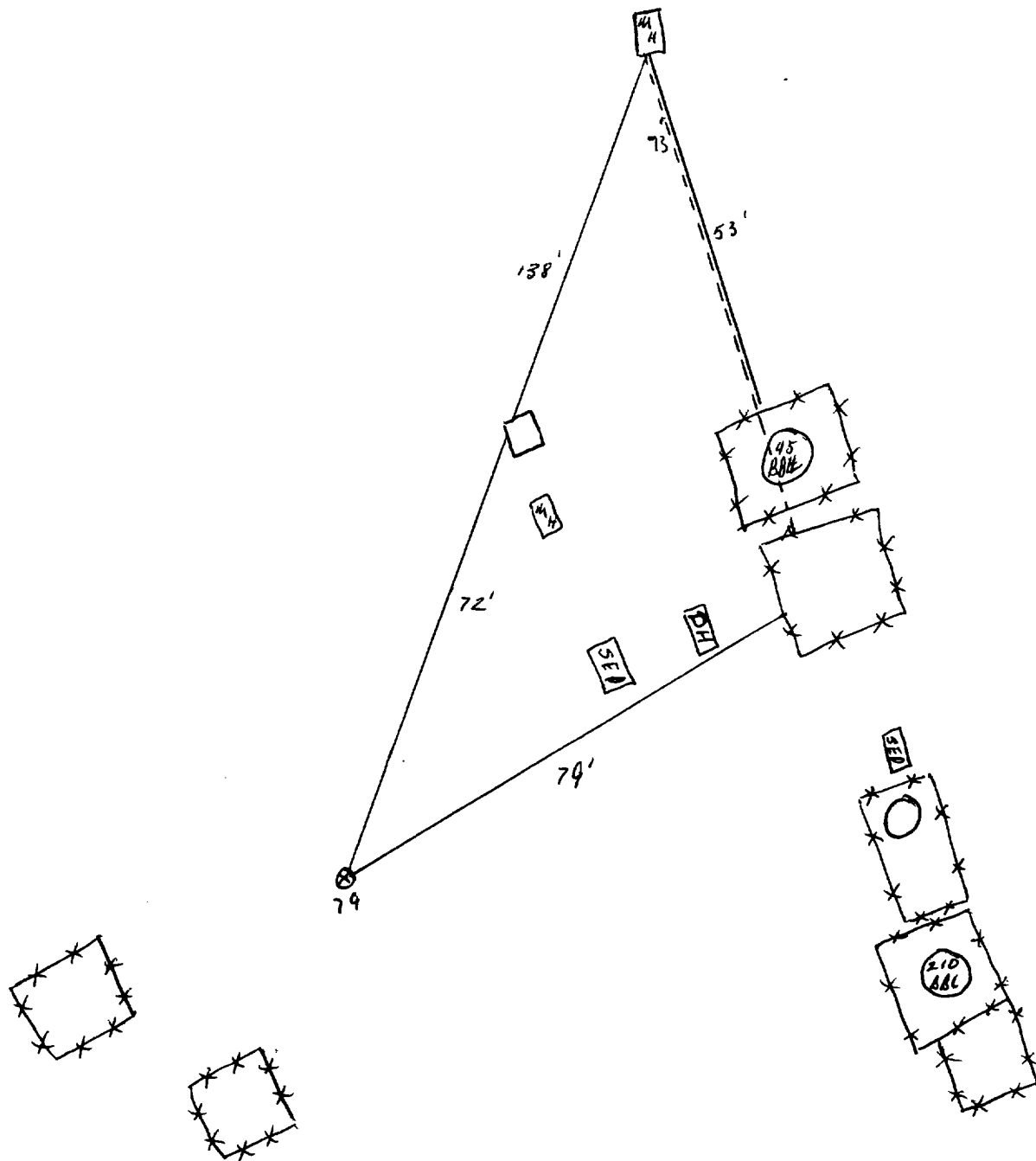
DATE July 28, 1997

SIGNATURE

PRINTED NAME
AND TITLEDenver Bearden
Administrator III

Lawson #1A

N



OFF: (505) 325-5667



LAB: (505) 325-1556

ANALYTICAL REPORT

Attn: *Denver Bearden*
Company: *PNM Gas Services*
Address: *603 W. Elm*
City, State: *Farmington, NM 87401*

Date: *29-Apr-97*
COC No.: *5144*
Sample No.: *14298*
Job No.: *2-1000*

Project Name: *PNM Gas Services - Lawson 1A*
Project Location: *9704221130; Pit Excavation Composite; Bottom*
Sampled by: *RM* Date: *22-Apr-97* Time: *11:30*
Analyzed by: *HR* Date: *28-Apr-97*
Sample Matrix: *Soil*

Laboratory Analysis

Parameter	Results as Received	Unit of Measure	Limit of Quantitation	Unit of Measure
<i>Diesel Range Organics (C10 - C28)</i>	ND	mg/kg	5.0	mg/kg

ND - Not Detected at Limit of Quantitation

Quality Assurance Report

DRO QC No.: *0519-STD*

Continuing Calibration Verification

Parameter	Method Blank	Unit of Measure	True Value	Analyzed Value	RPD	RPD Limit
<i>Diesel Range (C10 - C28)</i>	ND	ppm	100	104	4.0	15%

Matrix Spike

Parameter	1 - Percent Recovered	2 - Percent Recovered	Limit	RPD	RPD Limit
<i>Diesel Range (C10-C28)</i>	90	94	(70-130)	5	20%

Method - *SW-846 EPA Method 8015A mod. - Nonhalogenated Volatile Hydrocarbons by Gas Chromatography*

Approved by: *[Signature]*
Date: *4/29/97*

OFF: (505) 325-5667



LAB: (505) 325-1556

ANALYTICAL REPORT

Attn: *Denver Bearden*
Company: *PNM Gas Services*
Address: *603 W. Elm*
City, State *Farmington, NM 87401*

Date: *28-Apr-97*
COC No.: *5144*
Sample No.: *14298*
Job No.: *2-1000*

Project Name: ***PNM Gas Services - Lawson 1A***
Project Location: ***9704221130; Pit Excavation Composite; Bottom***
Sampled by: *RH* Date: *22-Apr-97* Time: *11:30*
Analyzed by: *DC* Date: *24-Apr-97*
Sample Matrix: *Soil*

Laboratory Analysis

Parameter	Results as Received	Unit of Measure	Limit of Quantitation	Unit of Measure
<i>Benzene</i>	ND	ug/kg	1.0	ug/kg
<i>Toluene</i>	3.3	ug/kg	1.0	ug/kg
<i>Ethylbenzene</i>	1.4	ug/kg	1.0	ug/kg
<i>m,p-Xylene</i>	8.7	ug/kg	1.0	ug/kg
<i>o-Xylene</i>	1.7	ug/kg	1.0	ug/kg
	<i>TOTAL</i>	15.0	ug/kg	

ND - Not Detected at Limit of Quantitation

Method - SW-846 EPA Method 8020A Aromatic Volatile Organics by Gas Chromatography

Approved by: *[Signature]*
Date: *4/29/97*

P.O. BOX 2606 • FARMINGTON, NM 87499

- TECHNOLOGY BLENDING INDUSTRY WITH THE ENVIRONMENT -

OFF: (505) 325-5667



LAB: (505) 325-1556

ANALYTICAL REPORT

Attn: *Denver Bearden*
Company: *PNM Gas Services*
Address: *603 W. Elm*
City, State *Farmington, NM 87401*

Date: *29-Apr-97*
COC No.: *5144*
Sample No.: *14297*
Job No.: *2-1000*

Project Name: **PNM Gas Services - Lawson 1A**
Project Location: **9704221125; Pit Excavation Composite; Walls**
Sampled by: RH Date: 22-Apr-97 Time: 11:25
Analyzed by: HR Date: 28-Apr-97
Sample Matrix: *Soil*

Laboratory Analysis

Parameter	Results as Received	Unit of Measure	Limit of Quantitation	Unit of Measure
<i>Diesel Range Organics (C10 - C28)</i>	ND	mg/kg	5.0	mg/kg

ND - Not Detected at Limit of Quantitation

Quality Assurance Report

DRO QC No.: 0519-STD

Continuing Calibration Verification

Parameter	Method Blank	Unit of Measure	True Value	Analyzed Value	RPD	RPD Limit
<i>Diesel Range (C10 - C28)</i>	ND	ppm	100	104	4.0	15%

Matrix Spike

Parameter	1- Percent Recovered	2 - Percent Recovered	Limit	RPD	RPD Limit
<i>Diesel Range (C10-C28)</i>	90	94	(70-130)	5	20%

Method - SW-846 EPA Method 8015A mod. - Nonhalogenated Volatile Hydrocarbons by Gas Chromatography

Approved by: *DAC*
Date: *4/29/97*

P.O. BOX 2606 • FARMINGTON, NM 87499

- TECHNOLOGY BLENDING INDUSTRY WITH THE ENVIRONMENT -

OFF: (505) 325-5667



LAB: (505) 325-1556

ANALYTICAL REPORT

Attn: *Denver Bearden*
Company: *PNM Gas Services*
Address: *603 W. Elm*
City, State *Farmington, NM 87401*

Date: *28-Apr-97*
COC No.: *5144*
Sample No.: *14297*
Job No.: *2-1000*

Project Name: ***PNM Gas Services - Lawson 1A***
Project Location: ***9704221125; Pit Excavation Composite; Walls***
Sampled by: *RH* Date: *22-Apr-97* Time: *11:25*
Analyzed by: *DC* Date: *24-Apr-97*
Sample Matrix: *Soil*

Laboratory Analysis

Parameter	Results as Received	Unit of Measure	Limit of Quantitation	Unit of Measure
<i>Benzene</i>	2.6	ug/kg	1.0	ug/kg
<i>Toluene</i>	37.8	ug/kg	1.0	ug/kg
<i>Ethylbenzene</i>	10.1	ug/kg	1.0	ug/kg
<i>m,p-Xylene</i>	92.1	ug/kg	1.0	ug/kg
<i>o-Xylene</i>	16.1	ug/kg	1.0	ug/kg
	<i>TOTAL</i>	158.6	ug/kg	

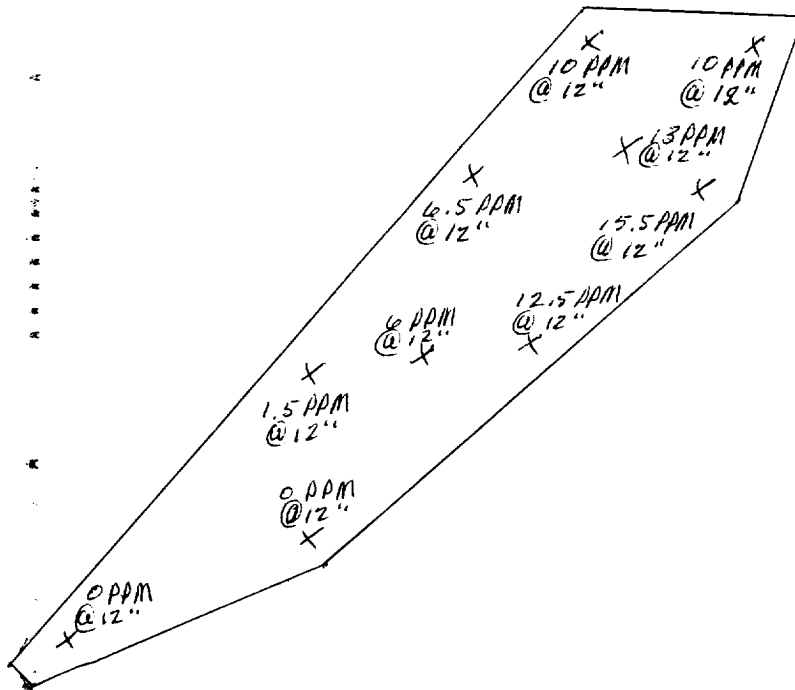
ND - Not Detected at Limit of Quantitation

Method - SW-846 EPA Method 8020A Aromatic Volatile Organics by Gas Chromatography

Approved by: *[Signature]*
Date: *4/28/97*

↑
N

See attached lab results for BTEX.



Lawson #1A
6-16-97 @ 0950

OFF: (505) 325-5667



LAB: (505) 325-1556

ANALYTICAL REPORT

Attn: *Denver Bearden*
Company: *PNM Gas Services*
Address: *603 W. Elm*
City, State: *Farmington, NM 87401*

Date: *20-Jun-97*
COC No.: *5158*
Sample No.: *14958*
Job No.: *2-1000*

Project Name: *PNM Gas Services - Lawson #1A Landfarm*
Project Location: *9706160950; 10pt. Composite*
Sampled by: *RH* Date: *16-Jun-97* Time: *9:50*
Analyzed by: *DC/HR* Date: *19-Jun-97*
Sample Matrix: *Soil*

Laboratory Analysis

Parameter	Results as Received	Unit of Measure	Limit of Quantitation	Unit of Measure
<i>Diesel Range Organics (C10 - C28)</i>	<i>17</i>	<i>mg/kg</i>	<i>5</i>	<i>mg/kg</i>

ND - Not Detected at Limit of Quantitation

Quality Assurance Report

DRO QC No.: 0548-STD

Continuing Calibration Verification

Parameter	Method Blank	Unit of Measure	True Value	Analyzed Value	RPD	RPD Limit
<i>Diesel Range (C10 - C28)</i>	<i>ND</i>	<i>ppm</i>	<i>200</i>	<i>195</i>	<i>2.5</i>	<i>15%</i>

Matrix Spike

Parameter	1- Percent Recovered	2- Percent Recovered	Limit	RPD	RPD Limit
<i>Diesel Range (C10-C28)</i>	<i>88</i>	<i>95</i>	<i>(70-130)</i>	<i>9</i>	<i>20%</i>

Method - *SW-846 EPA Method 8015A mod. - Nonhalogenated Volatile Hydrocarbons by Gas Chromatography*

Approved by: *[Signature]*
Date: *6/20/97*

P.O. BOX 2606 • FARMINGTON, NM 87499

- TECHNOLOGY BLENDING INDUSTRY WITH THE ENVIRONMENT -

OFF: (505) 325-5667



LAB: (505) 325-1556

ANALYTICAL REPORT

Attn: *Denver Bearden*
Company: *PNM Gas Services*
Address: *603 W. Elm*
City, State: *Farmington, NM 87401*

Date: *19-Jun-97*
COC No.: *5158*
Sample No.: *14958*
Job No.: *2-1000*


Project Name: *PNM Gas Services - Lawson #1A Landfarm*
Project Location: *9706160950; 10pt. Composite*
Sampled by: *RH* Date: *16-Jun-97* Time: *9:50*
Analyzed by: *HR* Date: *18-Jun-97*
Sample Matrix: *Soil*

Laboratory Analysis

Parameter	Results as Received	Unit of Measure	Limit of Quantitation	Unit of Measure
<i>Benzene</i>	ND	ug/kg	1	ug/kg
<i>Toluene</i>	2	ug/kg	1	ug/kg
<i>Ethylbenzene</i>	ND	ug/kg	1	ug/kg
<i>m,p-Xylene</i>	2	ug/kg	1	ug/kg
<i>o-Xylene</i>	1	ug/kg	1	ug/kg
<i>TOTAL</i>	4	ug/kg		

ND - Not Detected at Limit of Quantitation

Method - SW-846 EPA Method 8020A Aromatic Volatile Organics by Gas Chromatography

Approved by: 
Date: *6/19/97*