

DEVELOPMENT PLAN
LEEPER GAS COM NO. 2
820' FSL & 1850' FWL, Section 34, T-32-N, R-10-W
San Juan County, New Mexico

The Leeper Gas Com No. 2 is a development well for the Blanco Pictured Cliffs Field. It will be drilled from a ground level of 6032' to a TD of 2950'. The surface formation is the Nacimiento. Approximately 1000' of road will be built to the location thru sagebrush and small trees.

This well will be drilled using native mud to a depth of 250'. From 250' to TD low solids, non-dispersed mud will be used. Upon completion the location will be cleaned up, leveled and reserve pit backfilled. Attached is the BLM seeding plan to be followed upon completion of this well.

The estimated tops of important geological formations are as follows:

<u>Formation</u>	<u>Depth</u>	<u>Elevation</u>
Kirtland	1600'	4350'
Fruitland	2340'	3610'
Pictured Cliffs	2756'	3194'

The casing program to be used will include all new casing:

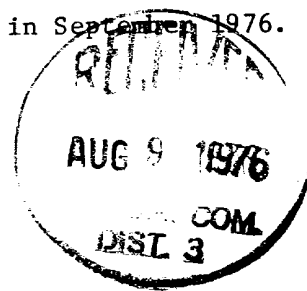
<u>Est. Depth</u>	<u>Hole Size</u>	<u>Casing Size</u>	<u>Weight Per Ft.</u>	<u>Grade</u>	<u>Sx Cmt & Type</u>
250'	12-1/4"	8-5/8"	24#	K-55	220 - Class "B" w/2% CaCl ₂
2950'	7-7/8"	4-1/2"	9.5#	K-55	750 - Class "B"* *(650 - 2% Gel, 2# Med. Tuf Plug & 100 - Neat)

Amoco's standard blowout preventer will be employed. See attached drawing for blowout preventer design.

Amoco will run an Induction Electric Survey from TD to 250' and a Density-Gamma Ray Log from TD to 1500'. No cores or drill stem tests will be taken.

From our drilling experience in the area we anticipate encountering BHP of 1250 in the Fruitland. The drilling mud weight will be raised sufficiently to control the high pressure gas.

We anticipate a drilling program of three weeks, beginning in September 1976.



BLM SEEDING REQUIREMENTS
IN THE FARMINGTON RESOURCE AREA

1. SEED MIXTURE 1

2. TIME:

All seeding will take place between July 1 and September 15.

3. EQUIPMENT:

Seeding will be done with a disc-type drill with two boxes for various seed sizes. The drill rows will be eight to ten inches apart. The seed will be planted not less than one-half inch deep or more than one inch deep. The seeder will be followed with a drag, packer, or roller to insure uniform coverage of the seed, and adequate compaction. Drilling will be done on the contour where possible, not up and down the slope. Where slopes are too steep for contour drilling, a "cyclone" hand seeder or similar broadcast seeder will be used. Seed will then be covered to the depth described above by whatever means is practical.

4. SEEDING AREAS:

(See map)

5. SPECIES TO BE PLANTED IN POUNDS PURE-LIVE-SEED PER ACRE:

CRESTED WHEATGRASS (Agropyron desertorum) - 2-1/2 lbs.

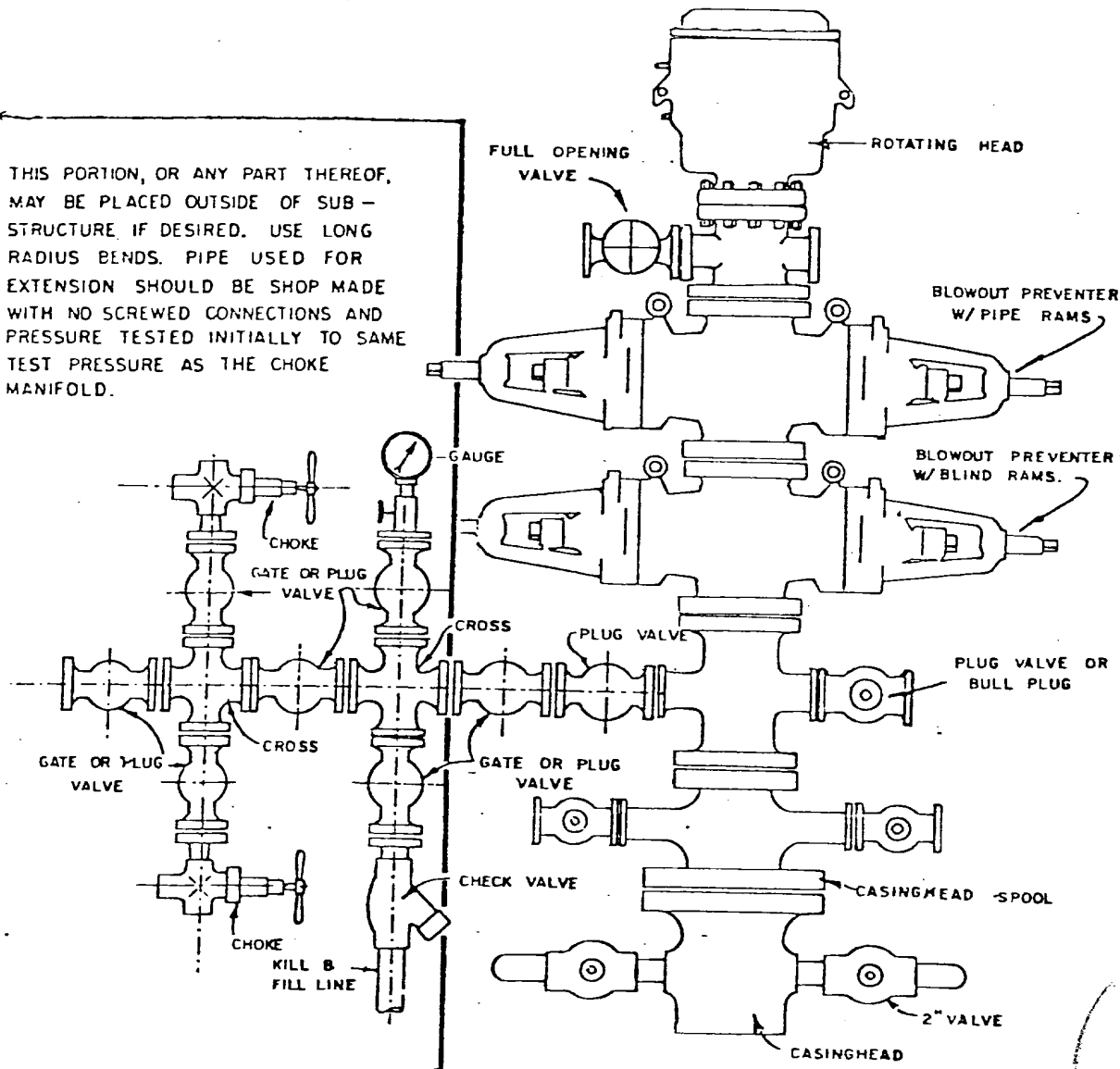
SMOOTH BROME (Bromus inermis) - 2-1/2 lbs.

FOURWING SALTBUSH (dewinged) (Atriplex conescens) - 1/2 lb.

NOMAD ALFALFA (Medicago sitiva) - 1 lb.



THIS PORTION, OR ANY PART THEREOF, MAY BE PLACED OUTSIDE OF SUB-STRUCTURE IF DESIRED. USE LONG RADIUS BENDS. PIPE USED FOR EXTENSION SHOULD BE SHOP MADE WITH NO SCREWED CONNECTIONS AND PRESSURE TESTED INITIALLY TO SAME TEST PRESSURE AS THE CHOKE MANIFOLD.



BLOWOUT PREVENTER HOOKUP

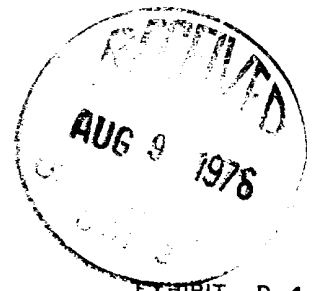
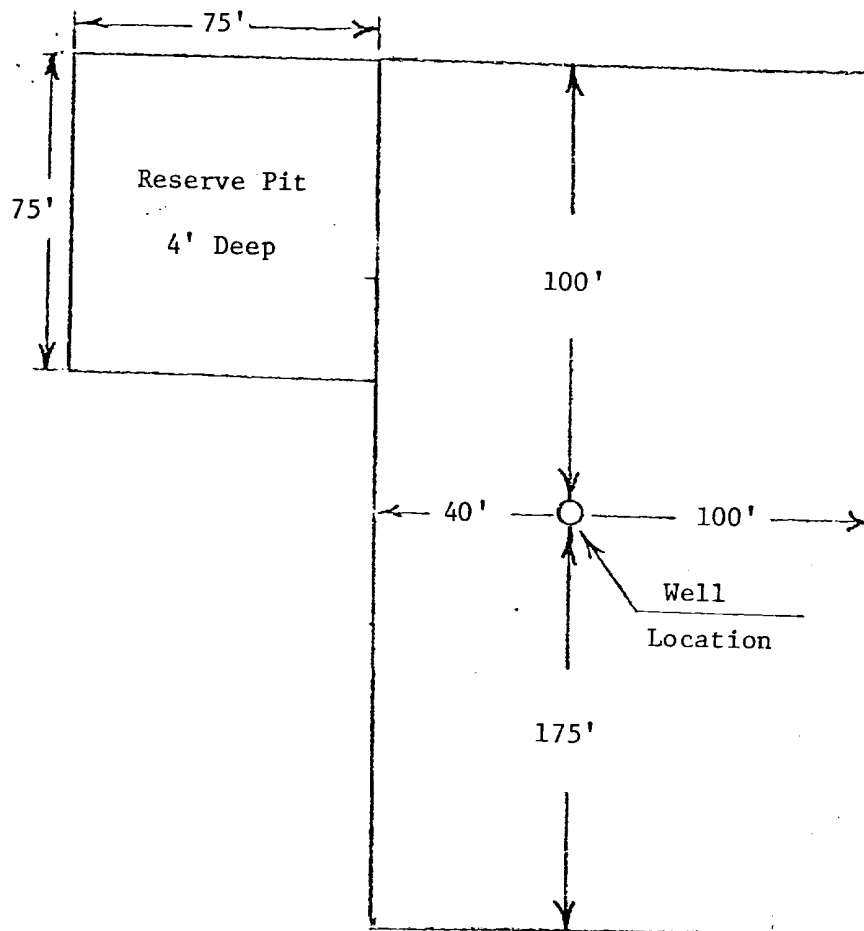


EXHIBIT D-4
OCTOBER 16, 1969

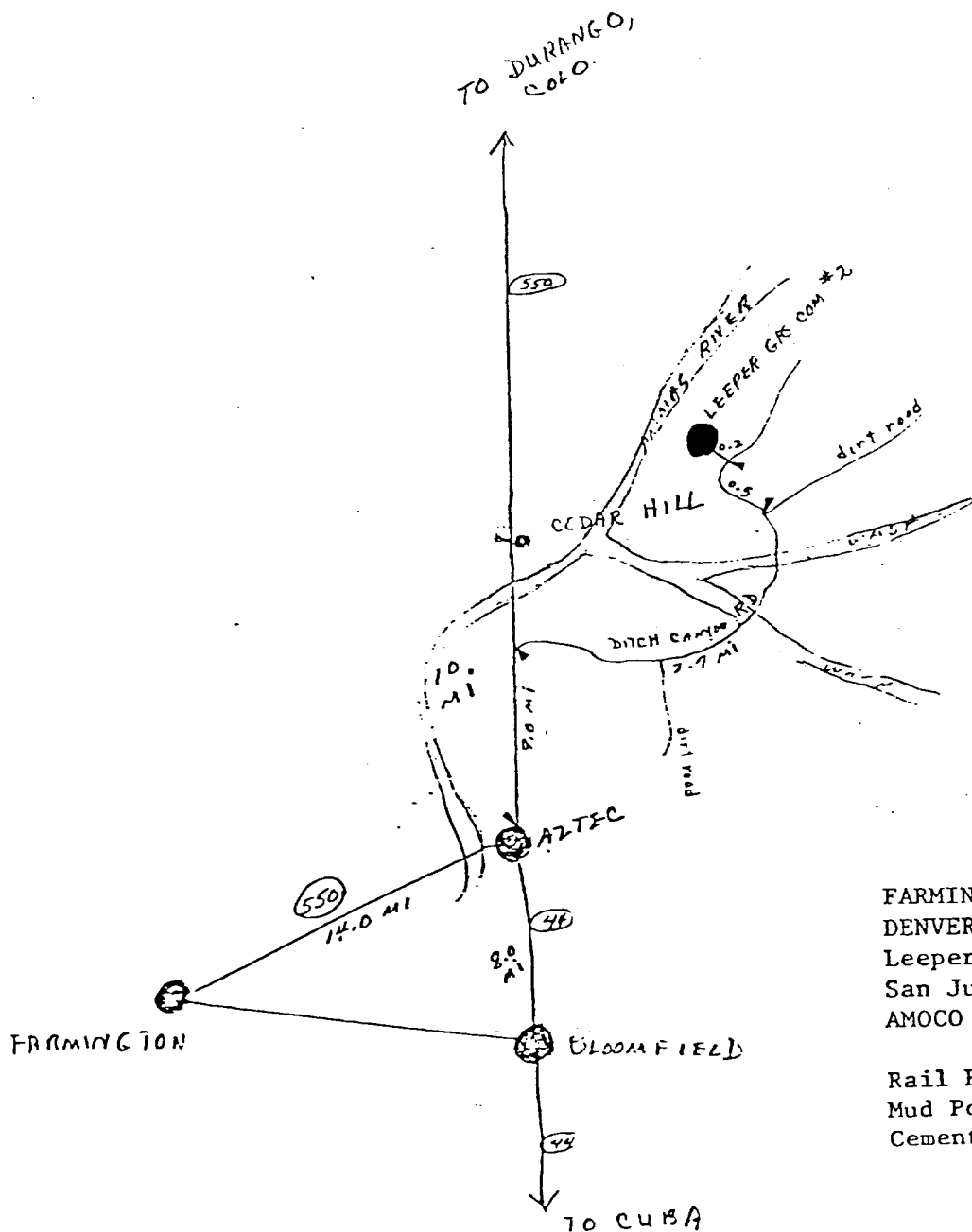
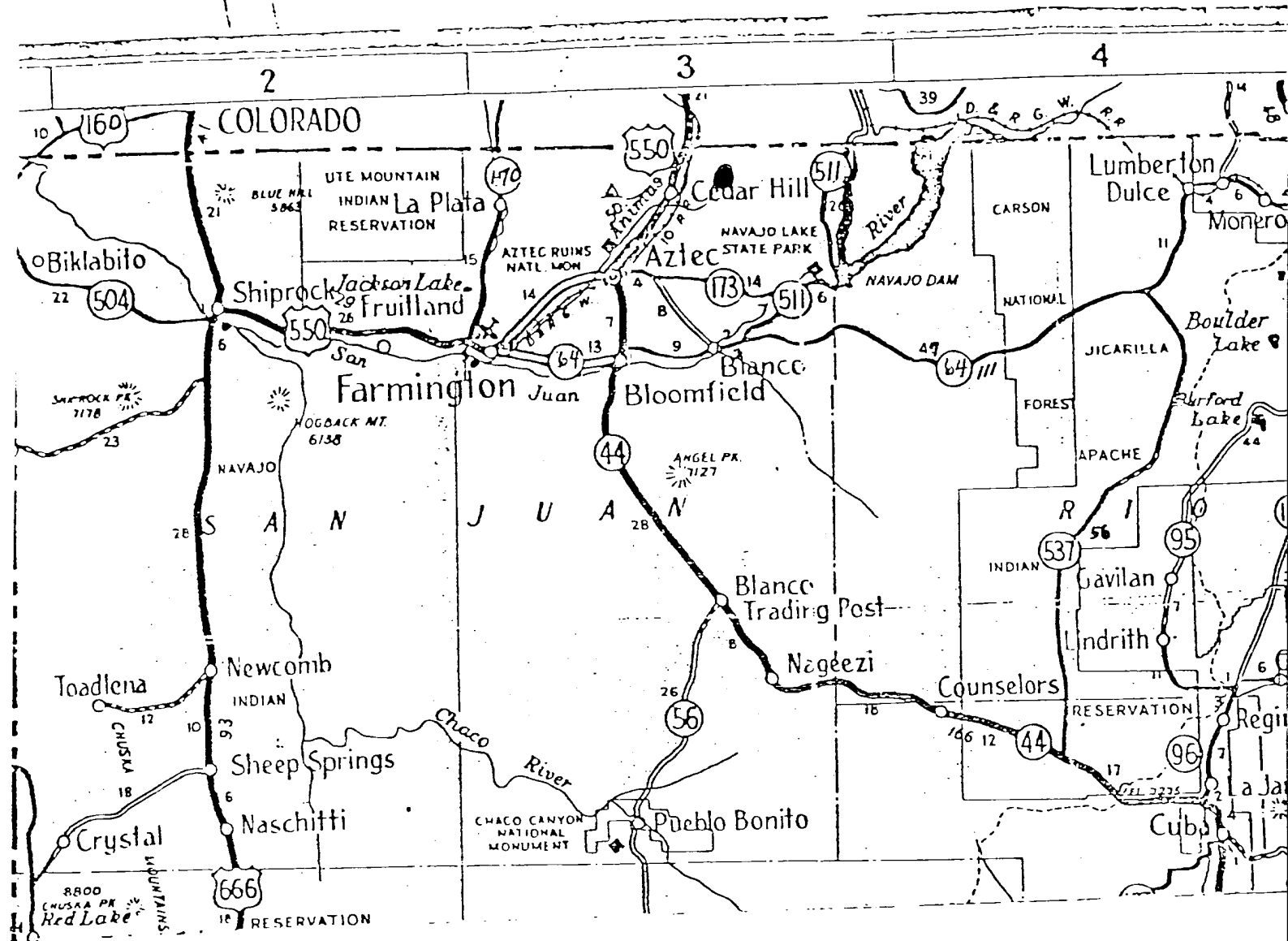
LOCATION DIAGRAM



Amoco Production Company LEEPER GAS COM NO. 2	SCALE: None
820' FSL & 1850' FWL, SECTION 34, T-32-N, R-10-W SAN JUAN COUNTY, NEW MEXICO	DRG. NO. 8-5-76

15 MINUT





FARMINGTON AREA TRAFFIC SKETCH
DENVER DIVISION
Leeper Gas Com Well No. 2
San Juan County, New Mexico
AMOCO WI: 96.95%

Rail Point, Aztec - 12.4 Mi.
Mud Point, Aztec - 12.4 Mi.
Cement Point, Farmington - 26.4 ?

7-12-76

