

NO. OF COPIES RECEIVED	6
DISTRIBUTION	
SANTA FE	1
FILE	2
U.S.G.S.	2
LAND OFFICE	
OPERATOR	2

NEW MEXICO OIL CONSERVATION COMMISSION

30-045-22165
Form C-101
Revised 1-4-65

5A. Indicate Type of Lease	
STATE <input type="checkbox"/>	FEE <input checked="" type="checkbox"/>
5. State Oil & Gas Lease No.	

APPLICATION FOR PERMIT TO DRILL, DEEPEN, OR PLUG BACK

1a. Type of Work	
b. Type of Well OIL WELL <input type="checkbox"/> GAS WELL <input checked="" type="checkbox"/> OTHER <input type="checkbox"/>	
2. Name of Operator Northwest Pipeline Corporation	
3. Address of Operator P.O. Box 90, Farmington, New Mexico 87401	
4. Location of Well UNIT LETTER <u>L</u> LOCATED <u>1480'</u> FEET FROM THE <u>South</u> LINE AND <u>960</u> FEET FROM THE <u>West</u> LINE OF SEC. <u>21</u> TWP. <u>32N</u> RGE. <u>7W</u> NMPM	
19. Proposed Depth 5763'	
19A. Formation Mesa Verde	
20. Rotary or C.T. Rotary	
21. Elevations (Show whether DP, RT, etc.) 6332' GR	
21A. Kind & Status Plug, Bond	
21B. Drilling Contractor	
22. Approx. Date Work will start - Sept. 1, 1976	

7. Unit Agreement Name
8. Farm or Lease Name San Juan 32-7 Unit Com
9. Well No. 24
10. Field and Pool, or Wildcat Blanco Mesa Verde
12. County San Juan

PROPOSED CASING AND CEMENT PROGRAM					
SIZE OF HOLE	SIZE OF CASING	WEIGHT PER FOOT	SETTING DEPTH	SACKS OF CEMENT	EST. TOP
13-3/4"	9-5/8"	36	200'	180	
8-3/4"	7"	20	3637'	160	
6-1/4"	4-1/2" Liner	10.5	3487'- 5763'	215	

Selectively perforate and stimulate the Mesa Verde formation.

A BOP will be installed after the surface casing has been run and cemented. All subsequent operations will be conducted through the BOP.

The w/2 of section 21 is dedicated to this well.

Gas is dedicated.

APPROVAL VALID
FOR 90 DAYS UNLESS
DRILLING COMMENCED,

EXPIRES 11/16/76

AUG 8 1976
DOM

IN ABOVE SPACE DESCRIBE PROPOSED PROGRAM: IF PROPOSAL IS TO DEEPEN OR PLUG BACK, GIVE DATA ON PRESENT PRODUCTIVE ZONE AND PROPOSED NEW PRODUCTIVE ZONE. GIVE BLOWOUT PREVENTER PROGRAM, IF ANY.

I hereby certify that the information above is true and complete to the best of my knowledge and belief.
Signed D. H. Maroncelli Title Production Engineer Date 8-18-76
(This space for State Use)

APPROVED BY CR Kendrick TITLE Commissioner DATE Aug 18 1976
CONDITIONS OF APPROVAL, IF ANY

NEW MEXICO OIL CONSERVATION COMMISSION
WELL LOCATION AND ACREAGE DEDICATION PLAT

Form C-102
Supersedes C-128
Effective 1-1-65

All distances must be from the outer boundaries of the Section.

Operator Northwest Pipeline Corporation			Lease San Juan 32-7 Unit Com		Well No. 24
Unit Letter L	Section 21	Township 32N	Range 7W	County San Juan	
Actual Footage Location of Well: 1180 feet from the South line and 960 feet from the West line					
Ground Level Elev. 6332	Producing Formation Mesa Verde		Pool Blanco	Dedicated Acreage: 329.13 32.0 Acres	

1. Outline the acreage dedicated to the subject well by colored pencil or hachure marks on the plat below.
2. If more than one lease is dedicated to the well, outline each and identify the ownership thereof (both as to working interest and royalty).
3. If more than one lease of different ownership is dedicated to the well, have the interests of all owners been consolidated by communitization, unitization, force-pooling, etc?

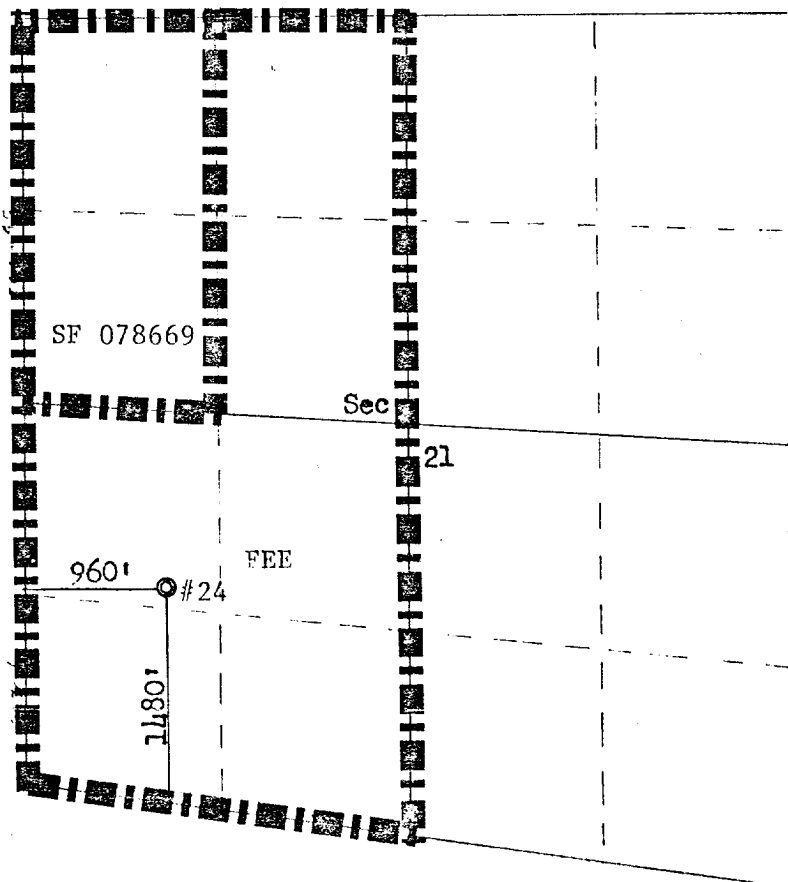
☐ Yes ☐ No If answer is "yes," type of consolidation _____

If answer is "no," list the owners and tract descriptions which have actually been consolidated. (Use reverse side of this form if necessary.) _____

No allowable will be assigned to the well until all interests have been consolidated (by communitization, unitization, forced-pooling, or otherwise) or until a non-standard unit, eliminating such interests, has been approved by the Commission.

AUG 8 1976

COM 3



Scale: 1"=3320'

CERTIFICATION

I hereby certify that the information contained herein is true and complete to the best of my knowledge and belief.

D. H. Maroncelli

Name
D.H. Maroncelli
Position
Production Engineer
Company
Northwest Pipeline Corp.
Date
August 3, 1976

I hereby certify that the well location shown on this plat was plotted from field notes of actual surveys made by me or under my supervision, and that the same is true and correct to the best of my knowledge and belief.

Date Surveyed
July 29, 1976
Registered Professional Engineer and Laid Surveyor
Fred B. Kerr Jr.
Fred B. Kerr Jr.
Certificate No.
3950