

NORTHWEST PIPELINE CORPORATION

MULTI - POINT SURFACE USE PLAN

for the San Juan 32-8 Unit

Well Number 36

1. Existing Roads: See attached topographic map. All existing roads used, shall be maintained in a serviceable condition at all times during the drilling operation.
2. Planned Access Roads: See attached topographic map. Maximum grade is approximately 7%. The road surface will not exceed twenty feet in width. Upon completion of drilling operations the access road will be adequately drained to control runoff and soil erosion. Drainage facilities may include ditches, water bars, culverts or any other measure deemed necessary. All activities will be confined to the access road and drill pad.
3. Location of Existing Wells: See attached topographic map.
4. Location of Tank Batteries; Production Facilities; and Production, Gathering and Service Lines: See attached topographic map for locations of existing and proposed gas gathering lines. The pipeline will be constructed adjacent to the area cleared for the access road, where practicable.
5. Location and Type of Water Supply: Water needed for the drilling operation will be hauled from the Los Pinos River near the La Boca Ranch.
6. Source of Construction Materials: No additional materials will be needed.
7. Methods for Handling Waste Disposal: All garbage, debris, and trash will be buried at least three feet deep. A portable toilet will be supplied for human waste. After drilling operations have been completed the reserve pit will be fenced and the liquid portion will be allowed to evaporate before the location is cleaned up and leveled. The earthen pits will not be located on natural drainages and will be constructed in such a manner so that they will not leak. Any evaporator pit containing toxic liquids will be fenced.
8. Ancillary Facilities: There will be no camps or airstrips associated with the drilling of this well.
9. Well Site Layout: See attached location layout sheet.
10. Plans for Restoration of the Surface: Upon completion of drilling, the location will be cleaned, and leveled so that no cut or fill banks will be steeper than 3:1.

All of the area disturbed in connection with the drill site will be seeded as close as possible for any above ground equipment while still allowing for access to the equipment. Seeding will be done within one year after drilling is completed and during the period from July 1 through September 15. Reseeding will be done with seed Mixture #1.

All equipment above ground will be painted a non-glare, non-reflective, non-chalking color that simulates the natural color of the site. For this well code number 595-34127 Green.

Con't on page 2

11. Other Information: If, during operations, any historic or prehistoric ruin, monument or site, or any object of antiquity is discovered, then work will be suspended and the discovery will be reported to the District Manager of the BLM.

The area covered by the location and proposed access road lays on the top of a hill and is covered with trees, brush and some grass.

12. Operator's Representative: D.H. Maroncelli, P.O. Box 90, Farmington, NM 87401, Phone: 327-5351 Extension 54.

13. Certification:

I hereby certify that I have inspected the proposed drillsite and access route; that I am familiar with the conditions which presently exist; that the statements made in this plan are, to the best of my knowledge, true and correct; and, that the work associated with the operations proposed herein will be performed by Northwest Pipeline Corporation and its contractors and sub-contractors in conformity with this plan and the terms and conditions under which it is approved.

8-10-76
Date

D.H. Maroncelli
D.H. Maroncelli
Production Engineer

DHM/kds

OPERATIONS PLAN

San Juan 32-8 Unit #36

San Juan County, New Mexico

I. Location: NE/4 Sec. 25, T32N, R8W

Lease Number: SF079381

Field: Los Pinos Fruitland

Elevation: 7003' GR

II. Geology:

A. Formation Tops:

San Jose: Surface
Ojo Alamo: 2195'
Kirtland: 2235'
Fruitland: 3460'
Pictured Cliffs: 3865'
Lewis: 3995'

Total Depth: 4035'

B. Logging Program: IES and Gamma Ray Density at T.D.

C. Coring Program: None

D. Testing Program: None

III. Drilling

A. Anticipated starting date and duration of activities: September 10, 1976 through September 18, 1976.

B. BOP: Blind rams and pipe rams, 10" 900 series, double gate, rated at 3000 PSI.

C. Mud Program:

(a) Spud Mud: Water, lime and gel.

(b) Surface to 3400'

Viscosity: 28-32 sec/qt.

Weight: 8.5-9.0 #/gal.

Water Loss: 7-12 CC

Ph: 8.5-9.5

(c) From 3400' to Total Depth

Viscosity: 38-50 sec/qt.

Weight: 9-9.2 #/gal.

Water Loss: 6-8 CC

Ph: 8.5-9.5

IV. Materials:

A. Casing Program:

<u>Hole Size</u>	<u>Depth O.H.</u>	<u>Casing Size</u>	<u>Wt. & Grade</u>	<u>Depth Set</u>
12-1/4"	120'	8-5/8"	24# K-55	120'
6-3/4"	4035'	2-7/8"	6.4# K-55	4035'

B. Float Equipment:

- (a) Surface Casing 8-5/8" - Larkin guide shoe (Fig. 102)
- (b) Production Casing: 2-7/8" - 6' to 8' joint with notched collar on bottom and 2-7/8" Halliburton Baffel (Fig. 801.03095) on top for a shoe joint. Use two (2) 3-1/16" rubber balls and one Halliburton Omega Latch-in plug (Fig. 801.0292) above cement in a 3-1/4" I.D. plug container cementing head. Run six (6) B & W centralizers (Fig. 72281-00) on bottom six (6) joints. Pump plug with one barrel of 7-1/2% acetic acid.

(c) Tubing: None

(d) Wellhead Equipment: Larkin

V. Cementing:

- A. Surface Casing: 8-5/8" - Use 90 sacks of Class "B" cement with 1/4# of flocele/sack and 3% CC (100% excess).
Note: If surface casing is set ahead of Rotary Rig, use 90 sacks Class "B" w/1/4# flocele/sack. Test surface casing to 600 PSI for 30 minutes.

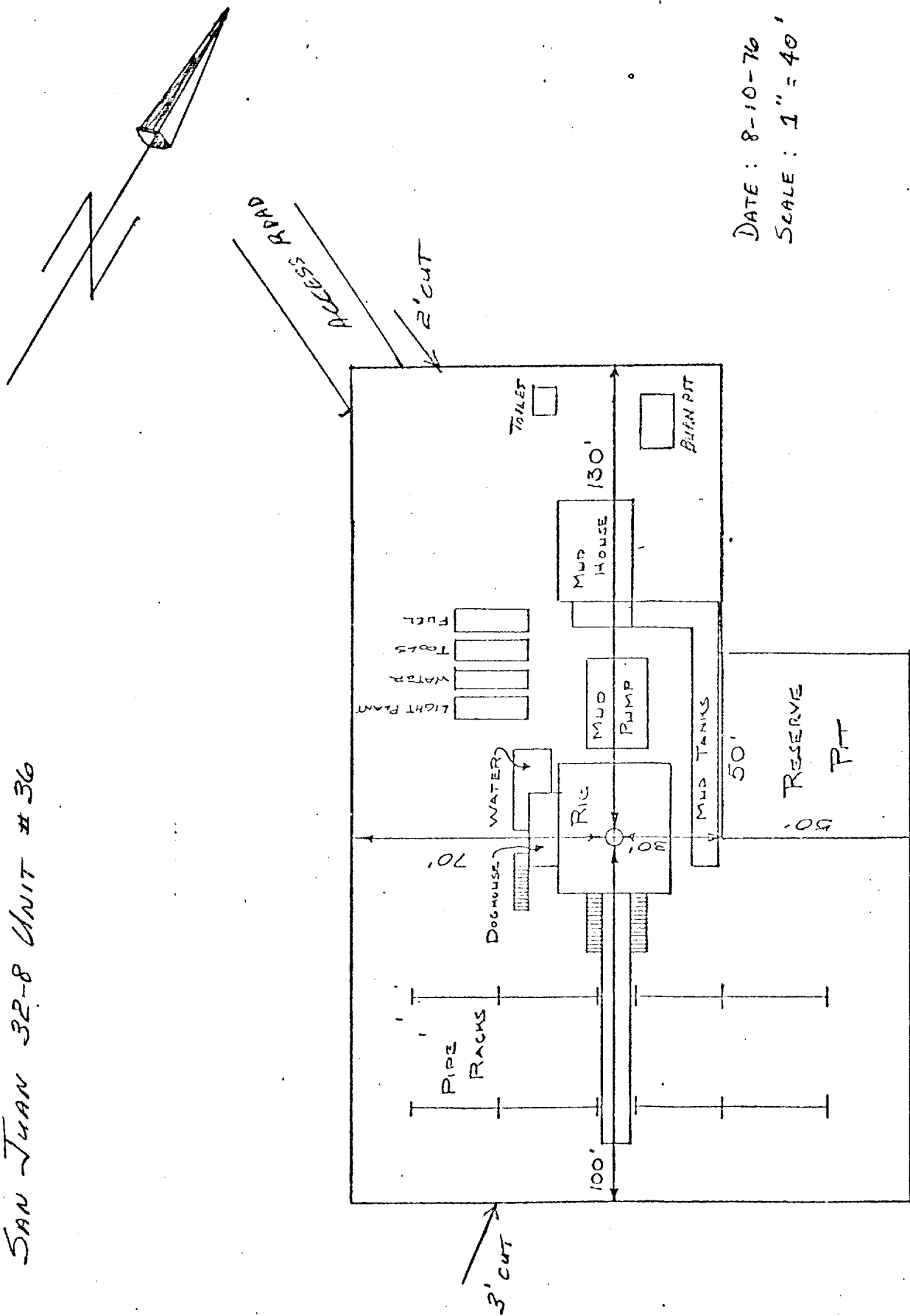
- B. Production Casing: 2-7/8" - Use 190 sacks of Class "B" 65/35 poz with 12% gel and 12-1/2 # of fine Gilsonite per sack. Tail in with 50 sacks of Class "B" cement w/2% CC (50% excess to fill to the top of the Ojo Alamo.) WOC 0 hours. Run temp. survey.

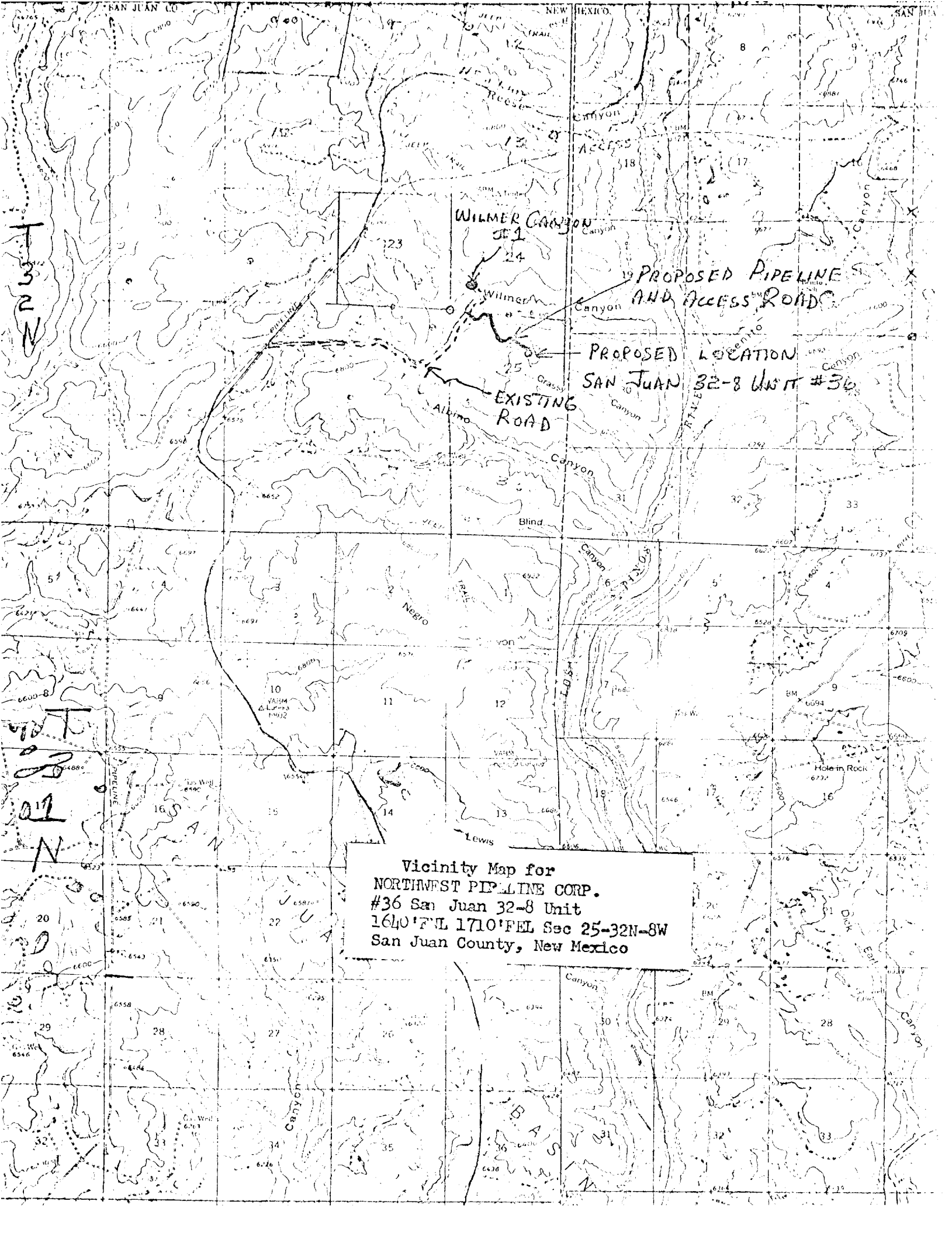
DHM/ks

NORTHWEST PIPELINE CORPORATION

LOCATION LAYOUT

SAN JUAN 32-8 UNIT #36





Vicinity Map for
NORTHWEST PIPELINE CORP.
#36 San Juan 32-8 Unit
1640' FEL 1710' FEL Sec 25-32N-8W
San Juan County, New Mexico