

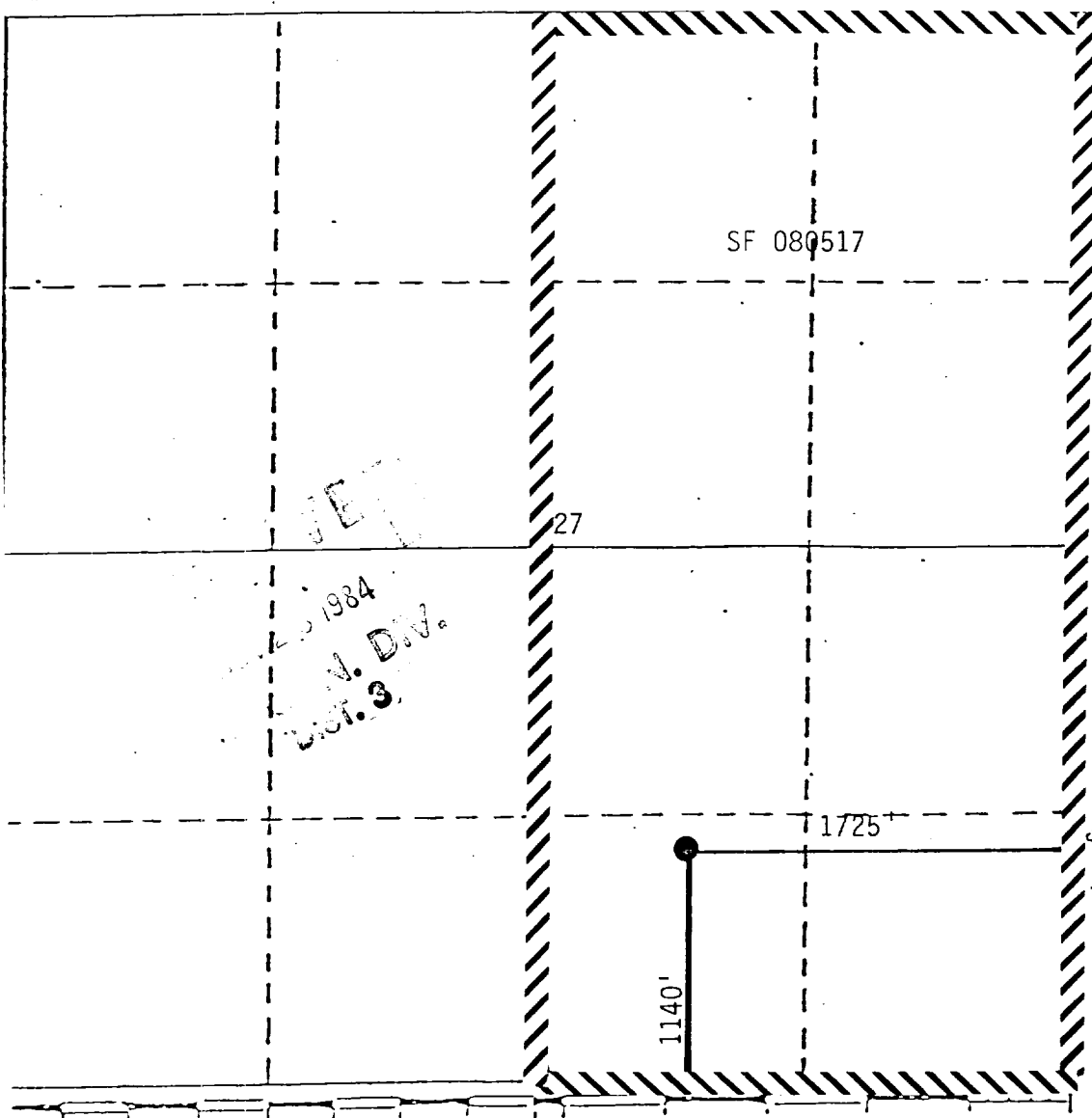
Operator Union Texas Petroleum Corp		Lease Payne		Well No. 5A
Unit Letter 0	Section 27	Township 32North	Range 10West	County San Juan
Actual Footage Location of Well: 1140 feet from the South line and 1725 feet from the East line				
Ground Level Elev. 6395	Producing Formation Mesa Verde Pictured Cliffs	Pool Blanco	Dedicated Acreage: E/2 314.25 acres 151.72	

1. Outline the acreage dedicated to the subject well by colored pencil or hatchure marks on the plat below.
2. If more than one lease is dedicated to the well, outline each and identify the ownership thereof (both as to working interest and royalty).
3. If more than one lease of different ownership is dedicated to the well, have the interests of all owners been consolidated by communitization, unitization, force-pooling, etc?

☐ Yes ☒ No If answer is "yes," type of consolidation \_\_\_\_\_

If answer is "no," list the owners and tract descriptions which have actually been consolidated. (Use reverse side of this form if necessary.) Union Texas Petroleum Corporation

No allowable will be assigned to the well until all interests have been consolidated (by communitization, unitization, forced-pooling, or otherwise) or until a non-standard unit, eliminating such interests, has been approved by the Division



## CERTIFICATION

I hereby certify that the information contained herein is true and complete to the best of my knowledge and belief.

*Rudy D. Motto*

Name

Rudy D. Motto

Position

Area Operations Manager

Company

Union Texas Petroleum Corp.

Date

November 20, 1984

I hereby certify that the well location shown on this plat was plotted from field notes of actual survey made by me or under my supervision, and that the same is true and correct to the best of my knowledge and belief.

Date Surveyed

August 13, 1976

Registered Professional Engineer  
and/or Land Surveyor

5992

Certificate No.