

NO. OF COPIES RECEIVED	
DISTRIBUTION	5
SANTA FE	1
FILE	1
U.S.G.S.	2
LAND OFFICE	
OPERATOR	1

NEW MEXICO OIL CONSERVATION COMMISSION

30-045-22222  
Form C-101  
Revised 1-1-65

5A. Indicate Type of Lease  
STATE ☐ FEE ☒  
5. State Oil & Gas Lease No.

APPLICATION FOR PERMIT TO DRILL, DEEPEN, OR PLUG BACK

1a. Type of Work		7. Unit Agreement Name	
b. Type of Well OIL WELL <input type="checkbox"/> GAS WELL <input checked="" type="checkbox"/> OTHER <input type="checkbox"/> DRILL <input checked="" type="checkbox"/> DEEPEN <input type="checkbox"/> PLUG BACK <input type="checkbox"/> SINGLE ZONE <input checked="" type="checkbox"/> MULTIPLE ZONE <input type="checkbox"/>		8. Farm or Lease Name <b>Sammons Gas Com "C"</b>	
2. Name of Operator <b>AMOCO PRODUCTION COMPANY</b>		9. Well No. <b>1</b>	
3. Address of Operator <b>501 Airport Drive, Farmington, New Mexico 87401</b>		10. Field and Pool, or Wildcat <b>Blanco Pictured Cliffs</b>	
4. Location of Well UNIT LETTER <b>A</b> LOCATED <b>820</b> FEET FROM THE <b>North</b> LINE AND <b>1130</b> FEET FROM THE <b>East</b> LINE OF SEC. <b>6</b> TWP. <b>31N</b> RGE. <b>10W</b> NMPM		12. County <b>San Juan</b>	
21. Elevations (Show whether DF, RT, etc.) <b>5873' GL est.</b>		19. Proposed Depth <b>3000'</b>	19A. Formation <b>Pictured Cliffs</b>
21A. Kind & Status Plug. Bond <b>Statewide</b>	21B. Drilling Contractor <b>Signal</b>	20. Rotary or C.T. <b>Rotary</b>	
22. Approx. Date Work will start <b>November 1976</b>			

PROPOSED CASING AND CEMENT PROGRAM

SIZE OF HOLE	SIZE OF CASING	WEIGHT PER FOOT	SETTING DEPTH	SACKS OF CEMENT	EST. TOP
12-1/4"	8-5/8"	24#	250'	200	Circ.
7-7/8"	4-1/2"	10.5#	3000'	670	Circ.

Amoco proposes to drill the above well to develop the Pictured Cliffs reservoir. The well will be drilled using rotary tools with mud as a circulating media to TD. Production casing will be set through the Pictured Cliffs formation upon completion. Perforations and stimulation will be based on analysis of open hole logs. A copy of all logs will be filed upon completion. Amoco's standard blowout prevention will be employed, see attached drawing for blowout preventer design.

Upon completion the well location will be cleaned, and the reserve pit filled and leveled.

This gas has not been dedicated to a gas sales contract.

APPROVAL VALID  
FOR 90 DAYS UNLESS  
DRILLING IS COMPLETED

EXPIRES 1-14-77

IN ABOVE SPACE DESCRIBE PROPOSED PROGRAM: IF PROPOSAL IS TO DEEPEN OR PLUG BACK, GIVE DATA ON PROPOSED DEEPENING ZONE AND PROPOSED NEW PRODUCTION ZONE. GIVE BLOWOUT PREVENTER PROGRAM, IF ANY.

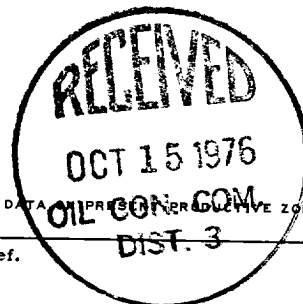
I hereby certify that the information above is true and complete to the best of my knowledge and belief.

Signed Area Engineer Title Area Engineer Date October 14, 1976

(This space for State Use)

APPROVED BY SUPERVISOR DIST. #3 TITLE SUPERVISOR DIST. #3 DATE OCT 15 1976

CONDITIONS OF APPROVAL, IF ANY:



NEW MEXICO OIL CONSERVATION COMMISSION  
WELL LOCATION AND ACREAGE DEDICATION PLAT

Form C-102  
Supersedes C-128  
Effective 1-1-65

All distances must be from the outer boundaries of the Section.

Operator <b>Amoco Production Company</b>			Lease <b>Sammons Gas Com. G</b>		Well No. <b>1</b>
Unit Letter <b>A</b>	Section <b>6</b>	Township <b>31N</b>	Range <b>10W</b>	County <b>San Juan</b>	
Actual Footage Location of Well: <b>820</b> feet from the <b>North</b> line and <b>1130</b> feet from the <b>East</b> line					
Ground Level Elev: <b>5873</b>	Producing Formation <b>Pictured Cliffs</b>		Pool <b>Blanco Pictured Cliffs</b>	Dedicated Acreage: <b>160.39</b> Acres	

1. Outline the acreage dedicated to the subject well by colored pencil or hachure marks on the plat below.
2. If more than one lease is dedicated to the well, outline each and identify the ownership thereof (both as to working interest and royalty).
3. If more than one lease of different ownership is dedicated to the well, have the interests of all owners been consolidated by communitization, unitization, force-pooling, etc?

☒ Yes ☐ No If answer is "yes," type of consolidation Communitization

If answer is "no," list the owners and tract descriptions which have actually been consolidated. (Use reverse side of this form if necessary.)

No allowable will be assigned to the well until all interests have been consolidated (by communitization, unitization, forced-pooling, or otherwise) or until a non-standard unit, eliminating such interests, has been approved by the Commission.

		S.A. Yager 10.04	H.E. Thomas 10.04	820'	40.23
		H.B. Sammons 20.08 Ac.			
		E. T. Israel 120 Ac.		1130'	
Sec		6			

CERTIFICATION

I hereby certify that the information contained herein is true and complete to the best of my knowledge and belief.

*H. D. Montgomery*  
Name  
H. D. Montgomery

Position  
Area Engineer

Company  
AMOCO PRODUCTION COMPANY

Date  
October 11, 1976

I hereby certify that the well location shown on this plat was plotted from field notes of actual surveys made by me or under my supervision, and that the same is true and correct to the best of my knowledge and belief.

Date Surveyed

**September 8, 1976**

Registered Professional Engineer and/or Land Surveyor

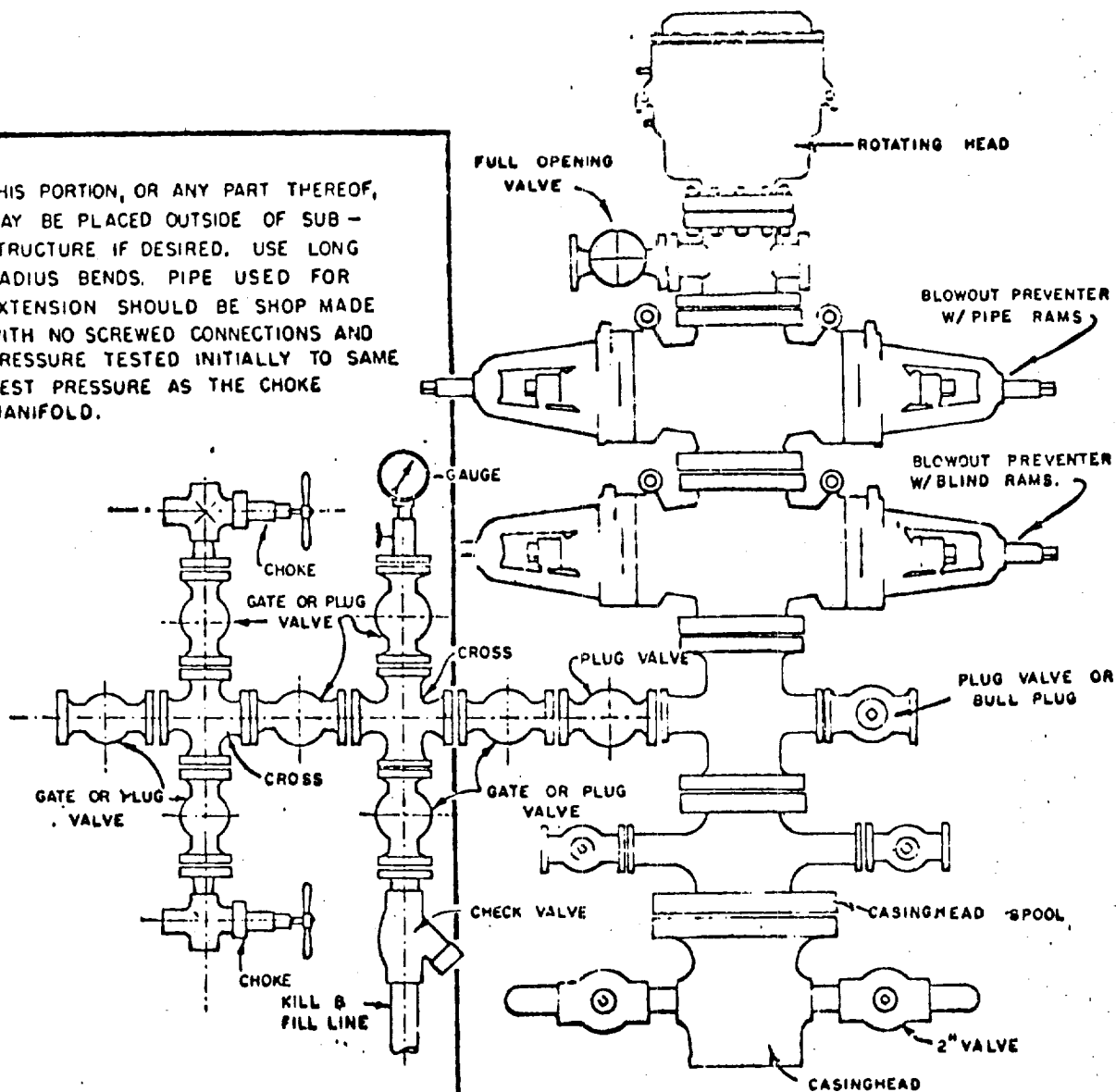
*Fred B. Kerr Jr.*  
Fred B. Kerr Jr.

Certificate No.

**3950**



THIS PORTION, OR ANY PART THEREOF, MAY BE PLACED OUTSIDE OF SUB-STRUCTURE IF DESIRED. USE LONG RADIUS BENDS. PIPE USED FOR EXTENSION SHOULD BE SHOP MADE WITH NO SCREWED CONNECTIONS AND PRESSURE TESTED INITIALLY TO SAME TEST PRESSURE AS THE CHOKE MANIFOLD.



## BLOWOUT PREVENTER HOOKUP

AMOCO PRODUCTION COMPANY

EXHIBIT D-4  
OCTOBER 16, 1966