

UNITED STATES  
DEPARTMENT OF THE INTERIOR  
GEOLOGICAL SURVEY

## APPLICATION FOR PERMIT TO DRILL, DEEPEN, OR PLUG BACK

## 1a. TYPE OF WORK

DRILL ☒DEEPEN ☐PLUG BACK ☐

## b. TYPE OF WELL

OIL  
WELL ☐GAS  
WELL ☒

OTHER

SINGLE  
ZONE ☐MULTIPLE  
ZONE ☐

## 2. NAME OF OPERATOR

Kirby Exploration Company

## 3. ADDRESS OF OPERATOR

P.O. Box 1745, Houston, Texas 77001

## 4. LOCATION OF WELL (Report location clearly and in accordance with any State requirements.)\*

At surface

990' FNL &amp; 1550' FEL

At proposed prod. zone

Same

## 14. DISTANCE IN MILES AND DIRECTION FROM NEAREST TOWN OR POST OFFICE\*

9.5 miles Northwest of Shiprock, New Mexico

## 15. DISTANCE FROM PROPOSED\*

LOCATION TO NEAREST

PROPERTY OR LEASE LINE, FT.

(Also to nearest drlg. unit line, if any) 990'

## 16. NO. OF ACRES IN LEASE

2534

## 17. NO. OF ACRES ASSIGNED

TO THIS WELL

160

## 18. DISTANCE FROM PROPOSED LOCATION\*

TO NEAREST WELL, DRILLING, COMPLETED, None - dry

OR APPLIED FOR, ON THIS LEASE, FT. hole 775' to N. E.

## 19. PROPOSED DEPTH

7400

## 20. ROTARY OR CABLE TOOLS

Rotary

## 21. ELEVATIONS (Show whether DF, RT, GR, etc.)

4909 GR

## 22. APPROX. DATE WORK WILL START\*

Dec. 5, 1976

## 23.

## PROPOSED CASING AND CEMENTING PROGRAM

SIZE OF HOLE	SIZE OF CASING	WEIGHT PER FOOT	SETTING DEPTH	QUANTITY OF CEMENT
17"	13 3/8"	48.0	125'	180 sacks class "A" + 2% CaCl <sub>2</sub>
11"	8 5/8"	24.0	2700'	600 sacks 65-35 Poz + 4% gel and
7 7/8"	4 1/2"	10.5 + 11.6#	7400'	1/2# per sack Floccel followed by
				200 sacks class "H" + 2% CaCl <sub>2</sub>
				200 sacks class "A"

MIRURT Drill 12 1/4" hole to 125' and ream to 17" - set 125 feet new 13 3/8" 48# H-40 casing at 125' and cement as indicated above. WOC 12 hours. Install 10" series 900 hydraulic BOP with drilling head. BOP to be pressure tested prior to drilling out surface casing. BOP to be tested daily to insure sound mechanical operations. Drill 11" hole to 2700'. Set new 8 5/8" 24.0# K-55 casing at 2700' and cement as above. WOC 18 hours. Drill 7 7/8" hole to total depth 7400'. DST will be taken as warranted. No cores will be taken. No abnormal pressures or temperatures are expected. Well will be drilled with native mud to 5500'. A gel chem mud system will be employed from 5500 to TD with mud characteristic of 9.6-9.8# per gallon, 10.0 cc water loss and 35-60 viscosity. Upon reaching TD open hole logs consisting of DILL, GR-FDC-CNL and Proximity will be run. 4 1/2" casing will be run and cemented as above if commercial. If well is non-commercial same will be plugged and abandoned in accordance with U.S.G.S. specifications. Gas from lease is not dedicated.

IN ABOVE SPACE DESCRIBE PROPOSED PROGRAM: If proposal is to deepen or plug back, give data on present productive zone and proposed new productive zone. If proposal is to drill or deepen directionally, give pertinent data on subsurface locations and measured and true vertical depths. Give blowout preventer program, if any.

## 24.

SIGNED

Jack D. Cook

TITLE

Agent

DATE

11-18-76

(This space for Federal or State office use)

PERMIT NO.

APPROVAL DATE

APPROVED BY

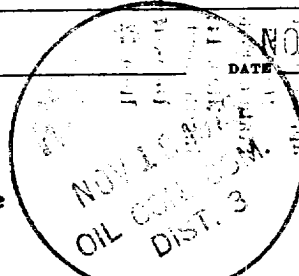
TITLE

DATE

CONDITIONS OF APPROVAL, IF ANY:

Okal

\*See Instructions On Reverse Side



**NEW MEXICO OIL CONSERVATION COMMISSION  
WELL LOCATION AND ACERAGE DEDICATION PLAT**

All distances must be from the outer boundaries of the Section

Operator <b>KIRBY EXPLORATION COMPANY</b>			Lease <b>KIRBY NAVAJO</b>		Well No. <b>1</b>
Unit Letter <b>B</b>	Section <b>29</b>	Township <b>31 NORTH</b>	Range <b>18 WEST</b>	County <b>SAN JUAN</b>	

Actual Footage Location of Well:

<b>990</b>	feet from the <b>NORTH</b>	line and	<b>1550</b>	feet from the <b>EAST</b>	line
Ground Level Elev. <b>4909</b>	Producing Formation <i>Permian</i> <b>Desert Creek</b>			Pool <b>Wildcat</b>	Dedicated Acreage: <b>160</b> Acres

1. Outline the acreage dedicated to the subject well by colored pencil or hachure marks on the plat below.
2. If more than one lease is dedicated to the well, outline each and identify the ownership thereof (both as to working interest and royalty),
3. If more than one lease of different ownership is dedicated to the well, have the interests of all owners been consolidated by communitization, unitization, force-pooling, etc?  
☐ Yes    ☐ No    If answer is "yes," type of consolidation \_\_\_\_\_

If answer is "no," list the owners and tract descriptions which have actually consolidated. (Use reverse side of this form if necessary.) \_\_\_\_\_

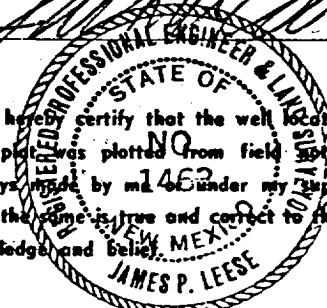
No allowable will be assigned to the well until all interests have been consolidated (by communitization, unitization, forced-pooling, or otherwise) or until a non standard unit, eliminating such interests, has been approved by the Commission.

**CERTIFICATION**

I hereby certify that the information contained herein is true and complete to the best of my knowledge and belief.

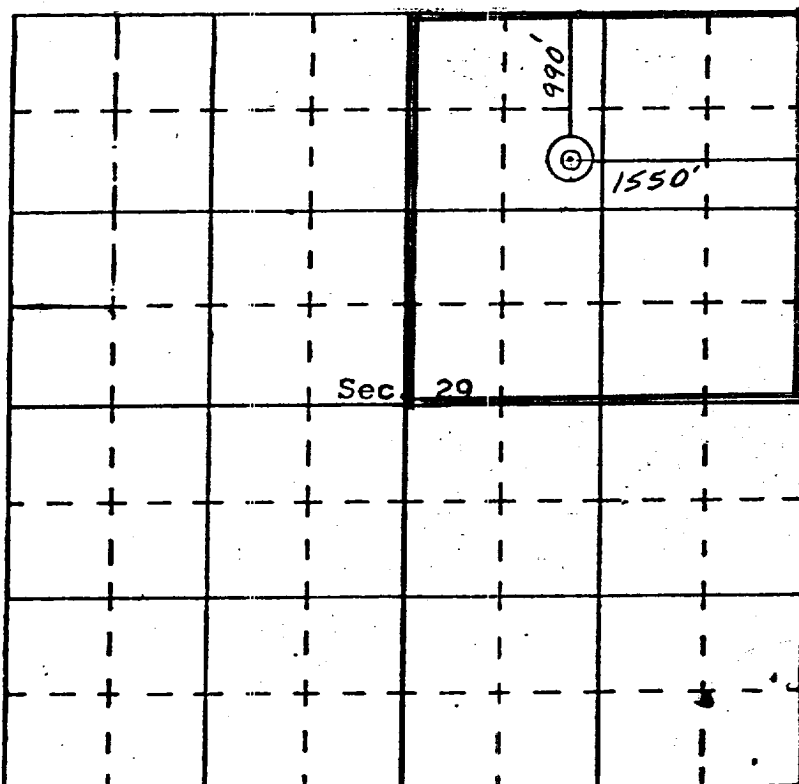
Jack D. Cook  
 Name  
 Agent  
 Position  
 Kirby Exploration Company  
 Company  
 11-18-76  
 Date

I hereby certify that the well location shown on this plat was plotted from field notes of actual surveys made by me or under my supervision, and that the same is true and correct to the best of my knowledge and belief.



Date Surveyed  
 Registered Professional Engineer  
 and/or Land Surveyor

**1463**  
 Certificate No.



N