

NO. OF COPIES RECEIVED	5
DISTRIBUTION	
SANTA FE	1
FILE	1
U.S.G.S.	2
LAND OFFICE	
OPERATOR	1

# NEW MEXICO OIL CONSERVATION COMMISSION

30-045-22341  
Form C-101  
Revised 1-1-65

5A. Indicate Type of Lease	
STATE <input type="checkbox"/>	FEE <input checked="" type="checkbox"/>
5. State Oil & Gas Lease No.	

## APPLICATION FOR PERMIT TO DRILL, DEEPEN, OR PLUG BACK

1a. Type of Work DRILL <input checked="" type="checkbox"/> DEEPEN <input type="checkbox"/> PLUG BACK <input type="checkbox"/>		7. Unit Agreement Name	
b. Type of Well OIL WELL <input type="checkbox"/> GAS WELL <input checked="" type="checkbox"/> OTHER <input type="checkbox"/>		8. Farm or Lease Name Federal 1	
2. Name of Operator Palmer Oil & Gas Company		9. Well No. No. 1A	
3. Address of Operator P. O. Box 2564, Billings, Montana 59103		10. Field and Pool, or Wildcat	
4. Location of Well UNIT LETTER K LOCATED 1820 FEET FROM THE West LINE AND 1525 FEET FROM THE South LINE OF SEC. 1 TWP. 31N RGE. 13W NMPM		12. County San Juan	
19. Proposed Depth 4800'		19A. Formation Mesaverde	
20. Rotary or C.T. Rotary		21. Elevations (Show whether DF, RT, etc.) 5759 grd	
21A. Kind & Status Plug. Bond blanket		21B. Drilling Contractor	
22. Approx. Date Work will start April 8, 1978			

23. PROPOSED CASING AND CEMENT PROGRAM				
SIZE OF HOLE	SIZE OF CASING	WEIGHT PER FOOT	SETTING DEPTH	SACKS OF CEMENT
12-1/4"	9-5/8"	36#	200'	185 sx
8-3/4"	7"	20#	3875'	350 sx
6-1/4"	4-1/2"	10.5#	4800'	350 sx

- Palmer has communitized 240 acres of Federal Lease NM-10183 with 80 acres of fee acreage as illustrated and outlined in red on the attached plat.
- We plan to drill a 4800' Mesaverde test in the NE1/4SW1/4 Section 1-31N-13W.
- Well will be drilled with rotary tools. 200' of 9-5/8" surface casing will be set and cemented to surface. An 8-1/4" hole will be mud drilled to approximately 3875' and a string of 7" 23# intermediate casing will be set and cemented to surface. The hole will be reduced to 6-1/4" and gas drilled to approximate T.D. of 4800' to test the Mesaverde. 4-1/2", 9.5# liner will be set from 3800' to T.D. and cemented with approximately 350 sacks cement.
- The well will be perforated 2 JSPF and fraced in 2 stages utilizing 2% KCL water and 10/20 sand.

IN ABOVE SPACE DESCRIBE PROPOSED PROGRAM: IF PROPOSAL IS TO DEEPEN OR PLUG BACK, GIVE DATA ON PRESENT PRODUCTIVE ZONE AND PROPOSED NEW PRODUCTIVE ZONE. GIVE BLOWOUT PREVENTER PROGRAM, IF ANY.

I hereby certify that the information above is true and complete to the best of my knowledge and belief.

Signed Robert D. Ballantyne Title Drilling Superintendent Date April 3, 1978  
(This space for State Use)

APPROVED BY AK Kendrick TITLE Drilling Superintendent DATE April 3, 1978  
CONDITIONS OF APPROVAL, IF ANY:

NEW MEXICO OIL CONSERVATION COMMISSION  
WELL LOCATION AND ACERAGE DEDICATION PLAT

All distances must be from the outer boundaries of the Section

Operator <b>PALMER OIL COMPANY</b>			Lease <b>Federal 1</b>		Well No. <b>1A</b>
Unit Letter <b>K</b>	Section <b>1</b>	Township <b>31 NORTH</b>	Range <b>13 WEST</b>	County <b>SAN JUAN</b>	
Actual Footage Location of Well: <b>1525</b> feet from the <b>South</b> line and <b>1820</b> feet from the <b>West</b> line					
Ground Level Elev. <b>5759</b>	Producing Formation <b>Mesaverde</b>		Pool <b>Blanco Mesaverde</b>	Dedicated Acreage: <b>320</b>	Acres

1. Outline the acreage dedicated to the subject well by colored pencil or hatchure marks on the plat below.
2. If more than one lease is dedicated to the well, outline each and identify the ownership thereof (both as to working interest and royalty),
3. If more than one lease of different ownership is dedicated to the well, have the interests of all owners been consolidated by communitization, unitization, force-pooling, etc?

(X) Yes ( ) No If answer is "yes," type of consolidation Communitization

If answer is "no," list the owners and tract descriptions which have actually consolidated. (Use reverse side of this form if necessary.)

No allowable will be assigned to the well until all interests have been consolidated (by communitization, unitization, forced-pooling, or otherwise) or until a non standard unit, eliminating such interests, has been approved by the Commission.

CERTIFICATION

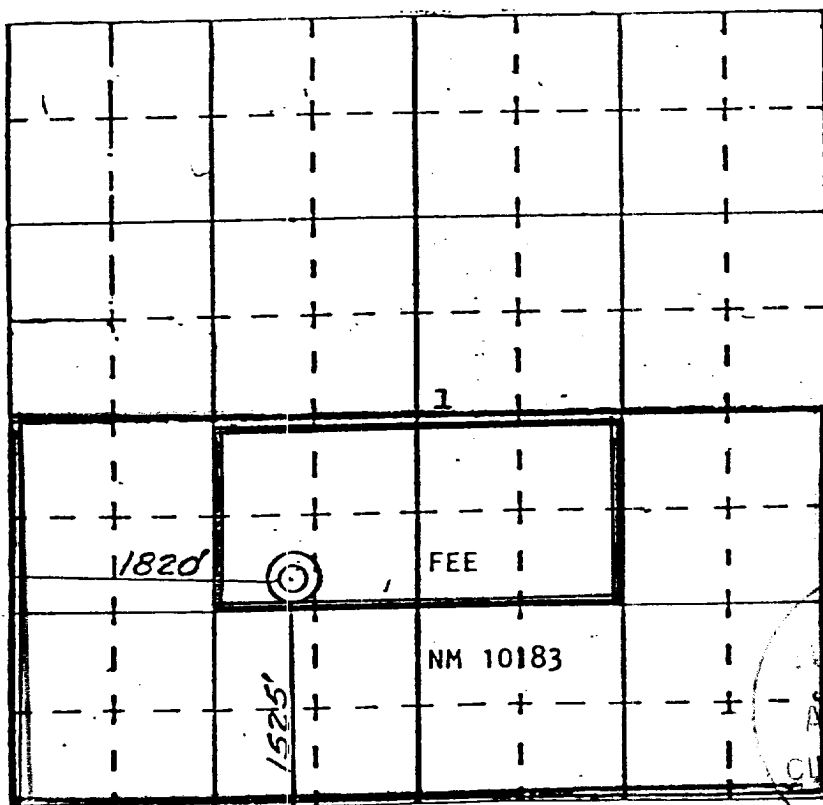
I hereby certify that the information contained herein is true and complete to the best of my knowledge and belief.

Name L. C. Campbell  
Land Manager  
Position  
Palmer Oil & Gas Company  
Company  
January 28, 1977  
Date

I hereby certify that the well location shown on this plat was plotted from field notes of actual surveys made by me or under my supervision and that the same is true and correct to the best of my knowledge and belief.

21 December 1976

Date Surveyed  
James P. Lees  
Registered Professional Engineer  
and/or Land Surveyor **James P. Lees**



N

APR 5 1978  
CL CON. COM.  
DIST. 3

1463

Certificate No.