

UNITED STATES  
DEPARTMENT OF THE INTERIOR  
GEOLOGICAL SURVEY

## APPLICATION FOR PERMIT TO DRILL, DEEPEN, OR PLUG BACK

1a. TYPE OF WORK  
DRILL ☒ DEEPEN ☐ PLUG BACK ☐

b. TYPE OF WELL  
OIL WELL ☐ GAS WELL ☒ OTHER ☐ SINGLE ZONE ☐ MULTIPLE ZONE ☒

2. NAME OF OPERATOR  
Aztec Oil & Gas

3. ADDRESS OF OPERATOR  
P.O. Drawer 570, Farmington, New Mexico

4. LOCATION OF WELL (Report location clearly and in accordance with any State requirements.)\*  
At surface 810' FSL & 870' FEL  
At proposed prod. zone

14. DISTANCE IN MILES AND DIRECTION FROM NEAREST TOWN OR POST OFFICE\*

15. DISTANCE FROM PROPOSED\* LOCATION TO NEAREST PROPERTY OR LEASE LINE, FT. (Also to nearest drlg. unit line, if any)

16. NO. OF ACRES IN LEASE

17. NO. OF ACRES ASSIGNED TO THIS WELL

18. DISTANCE FROM PROPOSED LOCATION\* TO NEAREST WELL, DRILLING, COMPLETED, OR APPLIED FOR, ON THIS LEASE, FT.

19. PROPOSED DEPTH

20. ROTARY OR OTHER TOOL

21. ELEVATIONS (Show whether DF, RT, GR, etc.)

22. APPROX. DATE WORK WILL START\*

## 23. PROPOSED CASING AND CEMENTING PROGRAM

SIZE OF HOLE	SIZE OF CASING	WEIGHT PER FOOT	SETTING DEPTH	QUANTITY OF CEMENT
13-3/4"	9-5/8"	36#	200'	190 sxs
8-3/4"	7"	23#	3591'	235 sxs
6-1/4"	4-1/2"	10.5#	3441'-5954'	315 sxs
	2-3/8"	4.7#	5925'	
	1-1/2"	2.9#	3400'	

Surface formation is Nacimiento.

Top of Ojo Alamo sand is at 1560'.

Top of Pictured Cliffs sand is at 3291'.

A fresh water mud system will be used for drilling to intermediate casing point.

An air system will be used for drilling to total depth.

It is anticipated that IES &amp; GR-Density logs will be run at intermediate depths.

It is anticipated that Gamma Ray Induction and Density logs will be run at total depth.

No abnormal pressures or poisonous gases are anticipated in this well.

It is expected that this well will be drilled before August 1, 1977. This depends

on time required for approvals, rig availability and the weather.

We will follow the surface restoration plan set out by the appropriate surface

agency and the U.S.G.S..

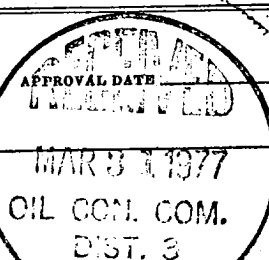
Gas is dedicated.

IN ABOVE SPACE DESCRIBE PROPOSED PROGRAM: If proposal is to deepen or plug back, give data on present productive zone and proposed new productive zone. If proposal is to drill or deepen directionally, give pertinent data on subsurface locations and measured and true vertical depths. Give blowout preventer program, if any.

24. SIGNED [Signature] TITLE District Production Manager DATE March 22, 1977

(This space for Federal or State office use)

PERMIT NO. \_\_\_\_\_

APPROVED BY [Signature] TITLE OIL CON. COM. DIST. 3DATE MAR 30 1977

\*See Instructions On Reverse Side

NEW MEXICO OIL CONSERVATION COMMISSION  
WELL LOCATION AND ACREAGE DEDICATION PLAT

Form C-102  
Supersedes C-128  
Effective 1-1-65

All distances must be from the outer boundaries of the Section.

Operator Aztec Oil & Gas Company			Lease Waller Unit		Well No. 1A
Unit Letter P	Section 11	Township 32N	Range 11W	County San Juan	
Actual Footage Location of Wells: 810 feet from the South line and 870 feet from the East line					
Ground Level Elev: 6553	Producing Formation Pictured Cliffs-Mesa Verde	Pool Blanco - PC ext	Dedicated Acreager MV 334 Acres PC 166.70		

1. Outline the acreage dedicated to the subject well by colored pencil or hachure marks on the plat below.
2. If more than one lease is dedicated to the well, outline each and identify the ownership thereof (both as to working interest and royalty).
3. If more than one lease of different ownership is dedicated to the well, have the interests of all owners been consolidated by communitization, unitization, force-pooling, etc?

☐ Yes ☐ No If answer is "yes," type of consolidation \_\_\_\_\_

If answer is "no," list the owners and tract descriptions which have actually been consolidated. (Use reverse side of this form if necessary.) \_\_\_\_\_

No allowable will be assigned to the well until all interests have been consolidated (by communitization, unitization, forced-pooling, or otherwise) or until a non-standard unit, eliminating such interests, has been approved by the Commission.

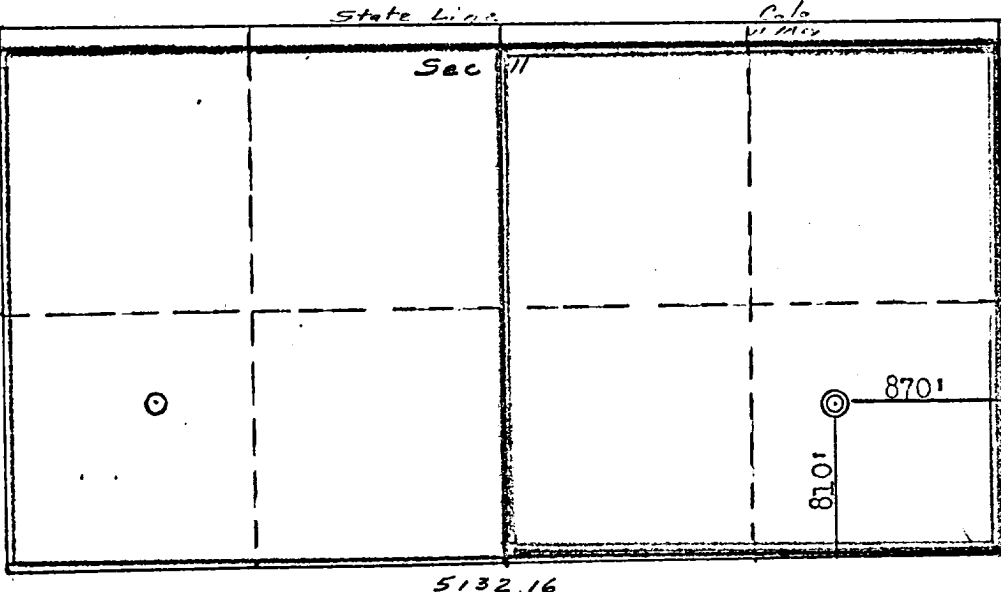
CERTIFICATION

I hereby certify that the information contained herein is true and complete to the best of my knowledge and belief.

Name \_\_\_\_\_  
Position \_\_\_\_\_  
District Production Manager  
Company \_\_\_\_\_  
Aztec Oil & Gas Company  
Date \_\_\_\_\_  
March 22, 1977

I hereby certify that the well location shown on this plat was plotted from field notes of actual surveys made by me or under my supervision, and that the same is true and correct to the best of my knowledge and belief.

Date Surveyed \_\_\_\_\_  
March 8, 1977  
Registered Professional Engineer and Land Surveyor  
Fred B. [Signature]  
Certificate No. \_\_\_\_\_  
2750



Scale: 1"=1000'

