

UNITED STATES  
DEPARTMENT OF THE INTERIOR  
GEOLOGICAL SURVEY

30-045-22534

APPLICATION FOR PERMIT TO DRILL, DEEPEN, OR PLUG BACK

1a. TYPE OF WORK

DRILL ☒

DEEPEN ☐

PLUG BACK ☐

b. TYPE OF WELL

OIL  
WELL ☐

GAS  
WELL ☒

OTHER

SINGLE  
ZONE ☐

MULTIPLE  
ZONE ☐

2. NAME OF OPERATOR

Northwest Pipeline Corporation

3. ADDRESS OF OPERATOR

P.O. Box 90, Farmington, New Mexico 87401

4. LOCATION OF WELL (Report location clearly and in accordance with any State requirements.)\*

At surface

1050' FSL & 1700' FEL

At proposed prod. zone

As above

14. DISTANCE IN MILES AND DIRECTION FROM NEAREST TOWN OR POST OFFICE\*

5. LEASE DESIGNATION AND SERIAL NO.

SF 074013

6. IF INDIAN, ALLOTTEE OR TRIBE NAME

7. UNIT AGREEMENT NAME

San Juan 32-8 Unit

8. FARM OR LEASE NAME

San Juan 32-8 Unit

9. WELL NO.

38

10. FIELD AND POOL, OR WILDCAT

Pump Mesa  
North Los Pinos Fruitland

11. SEC., T., R., M., OR BLK.  
AND SURVEY OR AREA

Sec. 29, T32N, R8W

12. COUNTY OR PARISH

13. STATE

San Juan

New Mexico

15. DISTANCE FROM PROPOSED\*

LOCATION TO NEAREST  
PROPERTY OR LEASE LINE, FT.  
(Also to nearest drlg. unit line, if any)

1050'

16. NO. OF ACRES IN LEASE

NA

17. NO. OF ACRES ASSIGNED  
TO THIS WELL

160

18. DISTANCE FROM PROPOSED LOCATION\*

TO NEAREST WELL, DRILLING, COMPLETED,  
OR APPLIED FOR, ON THIS LEASE, FT.

NA

19. PROPOSED DEPTH

3352'

20. ROTARY OR CABLE TOOLS

Rotary

21. ELEVATIONS (Show whether DF, RT, GR, etc.)

6633 GR

22. APPROX. DATE WORK WILL START\*

23. PROPOSED CASING AND CEMENTING PROGRAM

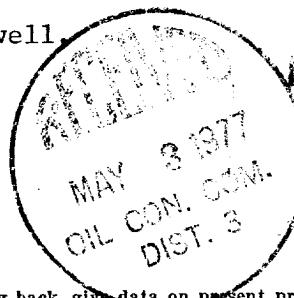
SIZE OF HOLE	SIZE OF CASING	WEIGHT PER FOOT	SETTING DEPTH	QUANTITY OF CEMENT
12 1/4"	8 5/8"	24#	120'	85 sks.
6 3/4"	2 7/8"	6.4#	3352'	170 sks.

Selectively perforate and stimulate the Fruitland formation.

A BOP will be installed after the surface casing has been run and cemented.  
All subsequent operations will be conducted through the BOP.

The SW/4 of Section 29 is dedicated to this well.

Gas is dedicated.



MAY 2 1977

IN ABOVE SPACE DESCRIBE PROPOSED PROGRAM: If proposal is to deepen or plug back, give data on present productive zone and proposed new productive zone. If proposal is to drill or deepen directionally, give pertinent data on subsurface locations and measured and true vertical depths. Give blowout preventer program, if any.

24.

SIGNED

J. P. Slattery

TITLE

Drilling Engineer

DATE

4/5/77

(This space for Federal or State office use)

PERMIT NO.

APPROVAL DATE

APPROVED BY

TITLE

DATE

CONDITIONS OF APPROVAL, IF ANY:

Ok

\*See Instructions On Reverse Side

NEW MEXICO OIL CONSERVATION COMMISSION  
WELL LOCATION AND ACREAGE DEDICATION PLAT

Form C-102  
Supersedes C-128  
Effective 1-1-65

All distances must be from the outer boundaries of the Section.

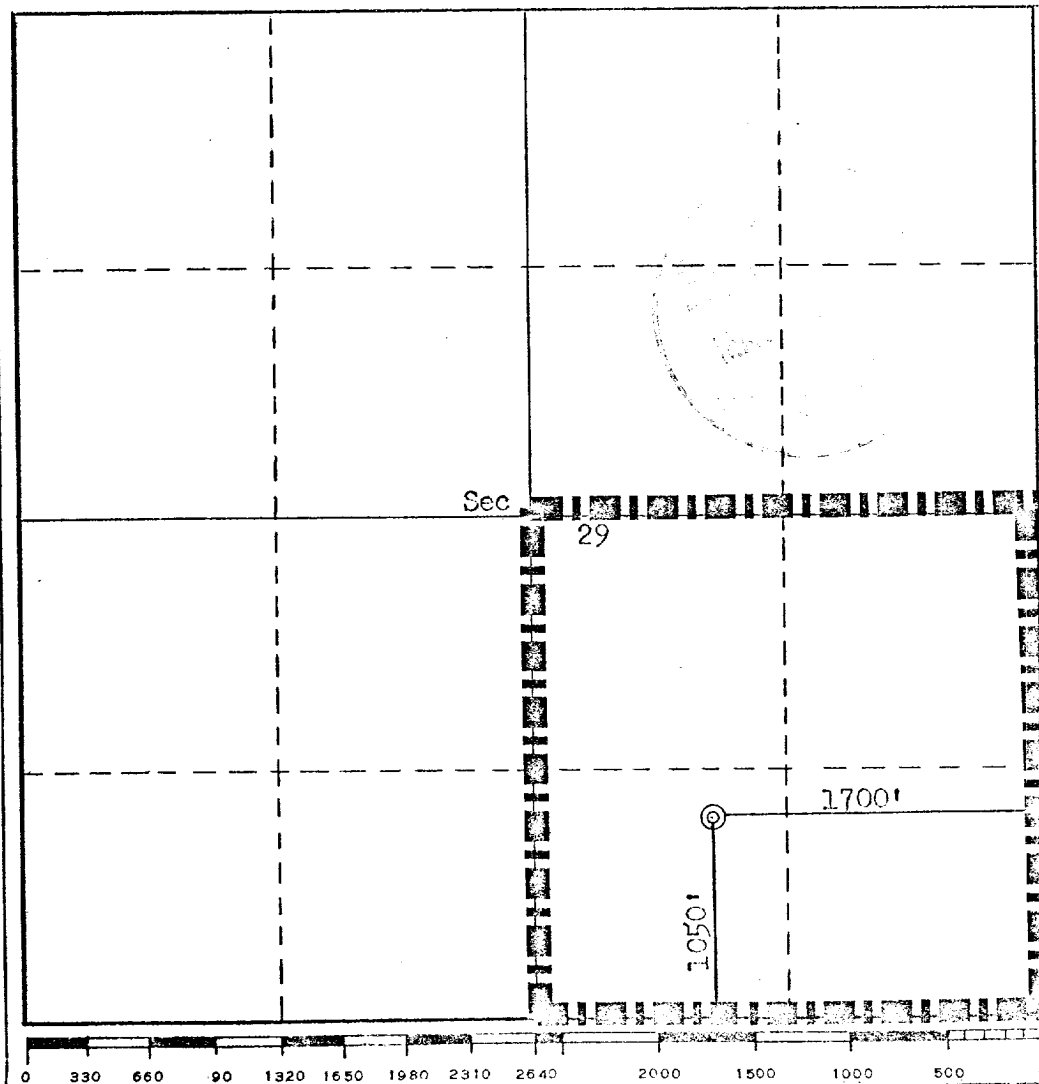
Operator <b>Northwest Pipeline Corporation</b>			Lease <b>San Juan 32-8 Unit</b>		Well No. <b>38</b>
Unit Letter <b>0</b>	Section <b>29</b>	Township <b>32N</b>	Range <b>8W</b>	County <b>San Juan</b>	
Actual Footage Location of Well: <b>1050</b> feet from the <b>South</b> line and <b>1700</b> feet from the <b>East</b> line					
Ground Level Elev. <b>6633</b>	Producing Formation <b>Fruitland</b>	Pool <b>Pump Mesa</b> <del>North Pine</del> <b>Fruitland</b>		Dedicated Acreage: <b>160</b> Acres	

1. Outline the acreage dedicated to the subject well by colored pencil or hachure marks on the plat below.
2. If more than one lease is dedicated to the well, outline each and identify the ownership thereof (both as to working interest and royalty).
3. If more than one lease of different ownership is dedicated to the well, have the interests of all owners been consolidated by communitization, unitization, force-pooling, etc?

☐ Yes ☐ No If answer is "yes," type of consolidation \_\_\_\_\_

If answer is "no," list the owners and tract descriptions which have actually been consolidated. (Use reverse side of this form if necessary.) \_\_\_\_\_

No allowable will be assigned to the well until all interests have been consolidated (by communitization, unitization, forced-pooling, or otherwise) or until a non-standard unit, eliminating such interests, has been approved by the Commission.



CERTIFICATION

I hereby certify that the information contained herein is true and complete to the best of my knowledge and belief.

*J. P. Slattery*  
Name

**J.P. Slattery**  
Position

**Drilling Engineer**

Company

**Northwest Pipeline Corporation**

Date  
**4/5/77**

I hereby certify that the well location shown on this plat was plotted from field notes of actual surveys made by me or under my supervision; and that the same is true and correct to the best of my knowledge and belief.

Date Surveyed

**March 19, 1977**

Registered Professional Engineer and/or Land Surveyor

*Fred B. Kerr Jr.*  
**Fred B. Kerr Jr.**

Certificate No.

**3950**