

**NEW MEXICO OIL CONSERVATION COMMISSION
WELL LOCATION AND ACREAGE DEDICATION PLAT**

Form C-102
Supersedes C-128
Effective 1-1-65

All distances must be from the outer boundaries of the Section.

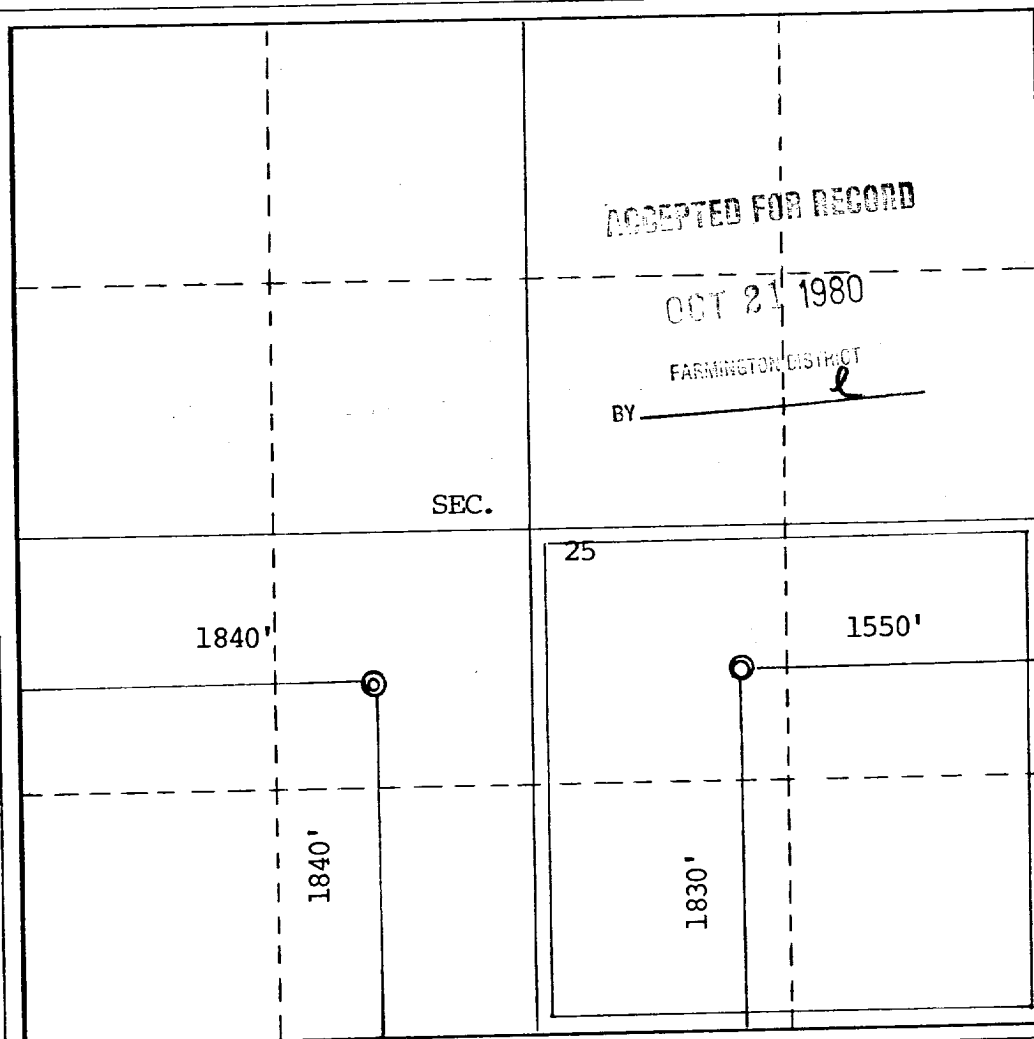
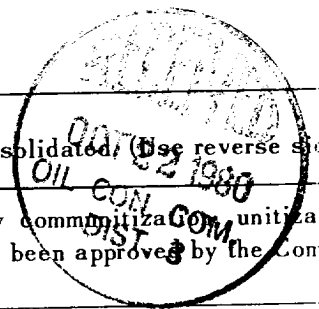
Operator Southland Royalty Company			Lease Burnt Mesa		Well No. #1A
Unit Letter J	Section 25	Township 32N	Range 7W	County San Juan	
Actual Footage Location of Well: <div style="display: flex; justify-content: space-between;"> 1830' feet from the South line and 1550' feet from the East line </div>					
Ground Level Elev. 6548'	Producing Formation Pictured Cliffs	Pool So. Los Pinos Fruitland - P.C.		Dedicated Acreage: 160 Acres	

1. Outline the acreage dedicated to the subject well by colored pencil or hachure marks on the plat below.
2. If more than one lease is dedicated to the well, outline each and identify the ownership thereof (both as to working interest and royalty).
3. If more than one lease of different ownership is dedicated to the well, have the interests of all owners been consolidated by communitization, unitization, force-pooling, etc?

☐ Yes ☐ No If answer is "yes," type of consolidation _____

If answer is "no," list the owners and tract descriptions which have actually been consolidated (See reverse side of this form if necessary.) _____

No allowable will be assigned to the well until all interests have been consolidated (by communitization, unitization, forced-pooling, or otherwise) or until a non-standard unit, eliminating such interests, has been approved by the Commission.



ACCEPTED FOR RECORD
OCT 21 1980
FARMINGTON DISTRICT
BY _____ *l*

CERTIFICATION

I hereby certify that the information contained herein is true and complete to the best of my knowledge and belief.

Robert E. Fielder

Name
Robert E. Fielder
Position
District Engineer
Company
Southland Royalty Company
Date
October 15, 1980

I hereby certify that the well location shown on this plat was plotted from field notes of actual surveys made by me or under my supervision, and that the same is true and correct to the best of my knowledge and belief.

April 26, 1977
Date Surveyed
Fred B. Kerr, Jr.
Registered Professional Engineer
and/or Land Surveyor

Certificate No.
3950

