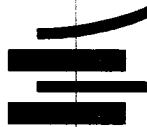


LTR



Job separation sheet

| | |
|------------------------|---|
| NO. OF COPIES RECEIVED | 6 |
| DISTRIBUTION | |
| SANTA FE | 1 |
| FILE | 1 |
| U.S.G.S. | 2 |
| LAND OFFICE | 1 |
| OPERATOR | 1 |

NEW MEXICO OIL CONSERVATION COMMISSION

APPROVAL VALID
FOR 90 DAYS UNLESS
CULING COMMENCED

9-18-77

30-045-22588
Form C-101
Revised 1-1-65

5A. Indicate Type of Lease

STATE ☒ FEE ☐

5. State Oil & Gas Lease No.

B-11125-34/E-5317

APPLICATION FOR PERMIT TO DRILL, DEEPEN, OR PLUG BACK

| | | | |
|---|--|---|--|
| 1a. Type of Work | | 7. Unit Agreement Name | |
| b. Type of Well OIL WELL <input type="checkbox"/> GAS WELL <input checked="" type="checkbox"/> OTHER <input type="checkbox"/> | | 8. Farm or Lease Name State Comm | |
| 2. Name of Operator Mesa Petroleum Company | | 9. Well No. 42 | |
| 3. Address of Operator P.O. Box 2009, Amarillo, Texas 79105 | | 10. Field and Pool, or Wildcat Blanco Pictured Cliff | |
| 4. Location of Well UNIT LETTER G LOCATED 1660 FEET FROM THE north LINE AND 1540 FEET FROM THE east LINE OF SEC. 32 TWP. 31N RGE. 9W NMPM | | 12. County San Juan | |
| 19. Proposed Depth 3450 | | 19A. Formation Pictured Cliff | |
| 20. Rotary or C.T. Rotary | | 21. Elevations (Show whether DF, RT, etc.) 6589 | |
| 21A. Kind & Status Plug. Bond State Wide | | 21B. Drilling Contractor unknown | |
| 22. Approx. Date Work will start July 1, 1977 | | | |

PROPOSED CASING AND CEMENT PROGRAM

| SIZE OF HOLE | SIZE OF CASING | WEIGHT PER FOOT | SETTING DEPTH | SACKS OF CEMENT | EST. TOP |
|--------------|----------------|-----------------|---------------|--|----------|
| 12 1/4 | 8 5/8 | 20# | 150 | 150 class "B" | surface |
| 7 7/8 | 3 1/2 | 9.2# | 3450 | + 2% CaCl ₂ 100 sacks 65-35 Poz Mix +12% gel, 100 sacks class "B" | 2450 |

Move in - rig up rotary tools. Drill 12 1/4" hole to 150 feet and case as above. Install and test blow out preventer. Drill 7 7/8" hole to 3450 feet and case as above. If well is non-commercial it will be plugged and abandoned as per Oil Conservation Commission's instructions.

No abnormal pressures are anticipated and the well will be drilled with mud having the following characteristics: WT 9.0# per gallon, viscosity 32± seconds per quart., w.l. 10 c.c. ±.

Gas under this lease is dedicated to ~~Southern Union Gas~~.

IN ABOVE SPACE DESCRIBE PROPOSED PROGRAM: IF PROPOSAL IS TO DEEPEN OR PLUG BACK, GIVE DATA ON PRESENT PRODUCTIVE ZONE AND PROPOSED NEW PRODUCTIVE ZONE. GIVE BLOWOUT PREVENTER PROGRAM, IF ANY.

I hereby certify that the information above is true and complete to the best of my knowledge and belief.

Signed John Alexander Title Agent Date 5-31-77

(This space for State Use)

ORIGINAL SIGNED BY N. E. MAXWELL, JR. PETROLEUM ENGINEER DIST. NO. 3

APPROVED BY _____ TITLE _____ DATE _____

CONDITIONS OF APPROVAL, IF ANY:

JUN 20 1977

NEW MEXICO OIL CONSERVATION COMMISSION WELL LOCATION AND ACERAGE DEDICATION PLAT

All distances must be from the outer boundaries of the Section

| | | | | | |
|---|----------------------|-----------------------------|-----------------------------|---------------------------|-----------------------|
| Operator MESA PETROLEUM COMPANY | | | Lease STATE COMM. | | Well No. 42 |
| Unit Letter G | Section 32 | Township 31 NORTH | Range 9 WEST | County SAN JUAN | |

Actual Footage Location of Well:
1660 feet from the **NORTH** line and **1540** feet from the **EAST** line

| | | | | |
|-----------------------------------|---|---------------------------------------|----------------------------------|-------|
| Ground Level Elev. 6589 | Producing Formation Pictured Cliffs | Pool Blanco-Pictured Cliffs | Dedicated Acreage: 160 | Acres |
|-----------------------------------|---|---------------------------------------|----------------------------------|-------|

1. Outline the acreage dedicated to the subject well by colored pencil or hachure marks on the plat below.
2. If more than one lease is dedicated to the well, outline each and identify the ownership thereof (both as to working interest and royalty),
3. If more than one lease of different ownership is dedicated to the well, have the interests of all owners been consolidated by communitization, unitization, force-pooling, etc?

() Yes () No If answer is "yes," type of consolidation

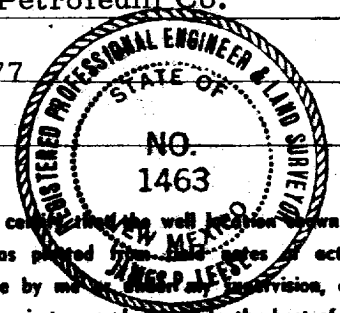
If answer is "no," list the owners and tract descriptions which have actually consolidated. (Use reverse side of this form if necessary.)

No allowable will be assigned to the well until all interests have been consolidated (by communitization, unitization, forced-pooling, or otherwise) or until a non standard unit, eliminating such interests, has been approved by the Commission.

CERTIFICATION

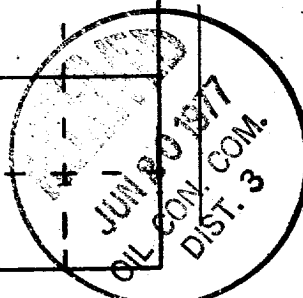
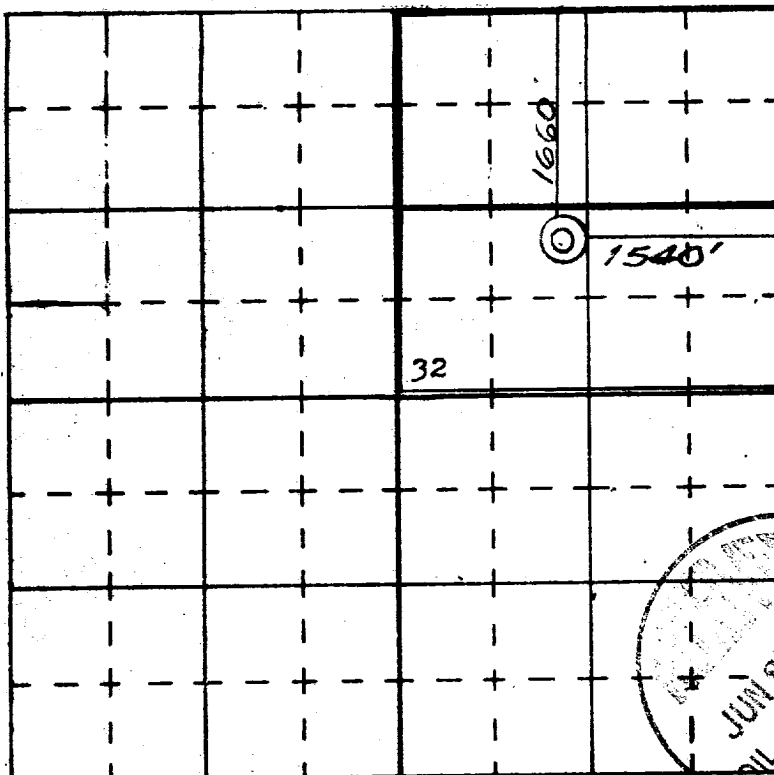
I hereby certify that the information contained herein is true and complete to the best of my knowledge and belief.

S.E. Dobler
 Name **S. E. Dobler**
 Supervisor, Drilling & Prod.
 Position
 Mesa Petroleum Co.
 Company
 2/11/77
 Date



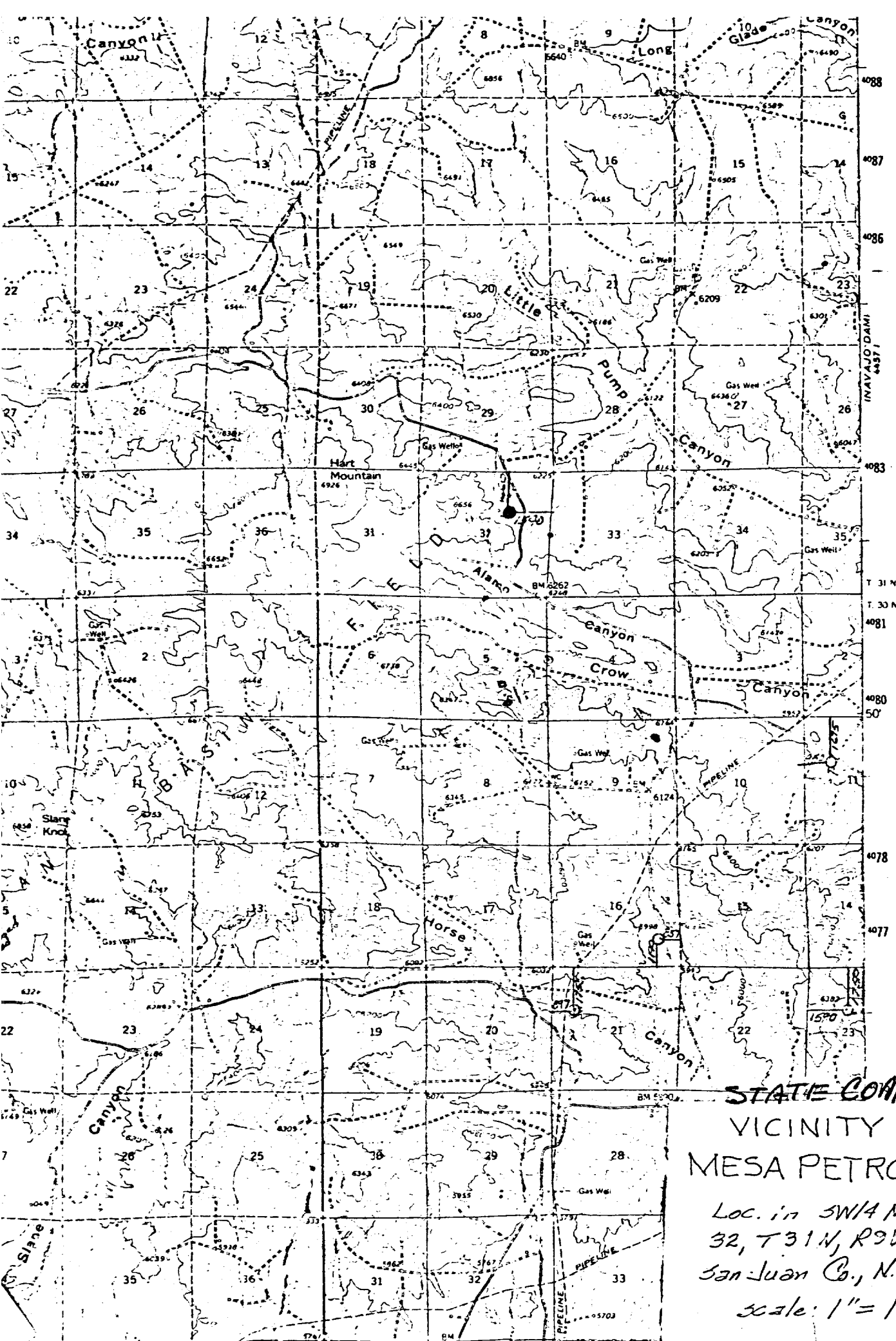
I hereby certify that the well location shown on this plat was plotted from data notes of actual surveys made by me under my supervision, and that the same is true and correct to the best of my knowledge and belief.

30 January 1977
 Date Surveyed
James P. Leese
 Registered Professional Engineer
 and/or Land Surveyor **James P. Leese**



State **B - 11125-34 N/2 NE/4**
E - 5317 S/2 NE/4

1463
 Certificate No.



STATE COMM. # 42
 VICINITY MAP
 MESA PETROLEUM
 Loc. in SW 1/4 NE 1/4 Sec.
 32, T 31 N, R 9 W, N.M.P.M.,
 San Juan Co., N. Mex.
 scale: 1" = 1 Mile