

UNITED STATES
DEPARTMENT OF THE INTERIOR
BUREAU OF LAND MANAGEMENT

FORM APPROVED
Budget Bureau No. 1004-0135
Expires: March 31, 1993

SUNDRY NOTICES AND REPORTS ON WELLS

Do not use this form for proposals to drill or to deepen or reentry to a different reservoir.
Use "APPLICATION FOR PERMIT - " for such proposals

5. Lease Designation and Serial No.

SF-078096

6. If Indian, Allottee or Tribe Name

7. If Unit or CA, Agreement Designation

8. Well Name and No.

Mudge 10A

9. API Well No.

30 045 22733

10. Field and Pool, or Exploratory Area

Blanco Mesaverde

11. County or Parish, State

San Juan, New Mexico

1. Type of Well

☐ Oil Well ☒ Gas Well ☐ Other

2. Name of Operator

Amoco Production Company

Attention:

Julie Acevedo

3. Address and Telephone No.

P.O. Box 800, Denver, Colorado 80201

4. Location of Well (Footage, Sec., T., R., M., or Survey Description)

1500 FSL, 1820' FEL, Sec. 9, T31N-R11W

12. CHECK APPROPRIATE BOX(s) TO INDICATE NATURE OF NOTICE, REPORT, OR OTHER DATA

TYPE OF SUBMISSION

TYPE OF ACTION

- ☒ Notice of Intent
☐ Subsequent Report
☐ Final Abandonment Notice

- ☐ Abandonment
☐ Recompletion
☐ Plugging Back
☐ Casing Repair
☐ Altering Casing
☒ Other Bradenhead Repair

- ☐ Change of Plans
☐ New Construction
☐ Non-Routine Fracturing
☐ Water Shut-Off
☐ Conversion to Injection
☐ Dispose Water

(Note: Report results of multiple completion on Well Completion or Recompletion Report and Log form.)

13. Describe Proposed or Completed Operations (Clearly state all pertinent details, and give pertinent dates, including estimated date of starting any proposed work. If well is directionally drilled, give subsurface locations and measured and true vertical depths for all markers and zones pertinent to this work.)*

Amoco intends to perform the attached workover procedure required to eliminate bradenhead pressure.

In addition, Amoco also requests approval to construct a temporary 15'X15'X5' blow pit for return fluids. This pit will be reclaimed if utilized, upon completion of this procedure.

If you have any questions please call Julie Acevedo at 303-830-6003.

RECEIVED
FEB 11 1993
OIL CON. DIV.
DIST. 3

RECEIVED
BLM
070 INNOVATION, NM
07 FEB -2 PM 12:49

14. I hereby certify that the foregoing is true and correct

Signed

Julie Acevedo

Title

Sr. Staff Assistant

Date 1/28/93

(This space for Federal or State office use)

Approved by

Title

Conditions of approval, if any:

APPROVED

FEB 08 1993

AREA MANAGER

Title 18 U.S.C. Section 1001, makes it a crime for any person knowingly and willfully to make to any department or agency of the United States any false, fictitious, or fraudulent statements or representations as to any matter within its jurisdiction.

BRADENHEAD PROCEDURE
MUDGE B 10A

JAN. 25, 1993 (ORIGINAL VERSION)

1. Record TP, SICP, and SIBHP.
2. MIRUSU.
3. Blow down well.
4. Install BOP.
5. TOH with 2 3/8" tubing. Lay down bull plug and perforated sub.
6. RU lubricator.
7. Run a correlation log from 5363' to 4800' and perforate, underbalanced, the MV with a 3 1/8" casing gun, 2 JSPF, 90 deg. phasing, and 15 g charges. Depths are correlated from Schlumberger's Compensated Formation Density log dated 78/01/15.

PERFORATE

4964' - 68'	4984' - 5000'	5010' - 20'
5030' - 35'	5042' - 54'	

8. Make a scraper run inside the 4 1/2" liner to 4800'.
9. TIH with RBP and set at 4800'. Cap with 5 sacks of sand.
10. Pressure test casing and liner top to 3500 psi.
11. Run a GR/CCL/CBL from 4800' to surface, and determine TOC for both the 4 1/2" liner and the 7" casing. Relay CBL info to Paul Edwards in Denver, and verify whether squeeze work will be necessary prior to the MV fracture treatment.
12. Swab fluid level down to 3900'.
13. RU lubricator. Correlate the GR/CCL/CBL with Schlumberger's Compensated Formation Density log dated 78/01/15. TIH with 3 1/8" casing gun and perforate the following MV intervals with 2 JSPF, 90 deg. phasing and 15 g charges.

PERFORATE

4306' - 36'	4357' - 60'	4412' - 49'
4455' - 62'	4470' - 78'	4489' - 91'
4500' - 03'	4530' - 32'	4540' - 47'

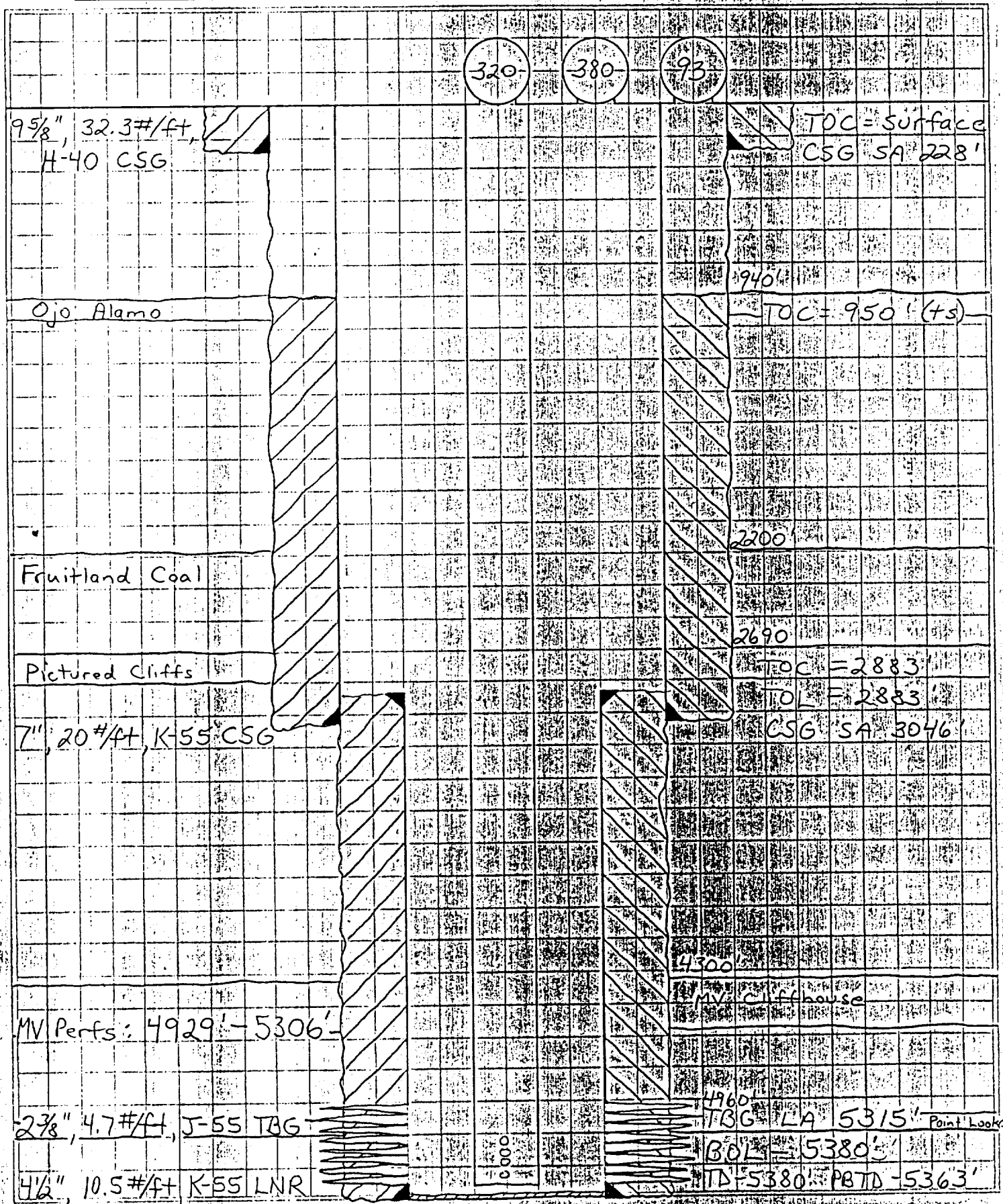
14. Fracture stimulate these perfs according to the attached frac schedule.
15. Open well slowly 4 hours after the frac. Flow back overnight.
16. Clean out with N2 to RBP and TOH with same.
17. Clean out sand to PBTD (5363') with N2.
18. TIH with RBP and set at 1500' inside 7" casing, cap with 5 sacks of sand.
19. Perforate 2 squeeze holes within 100' of the TOC in the 7" casing.
20. Conduct cement squeezes until cement is brought to surface. Run CBLs, shoot additional squeeze perfs, and contact Paul Edwards as necessary.
21. TOH with RBP set at 1500'.
22. Land tubing at 5050' with a seating nipple one joint off of bottom and continue to flow back load until well is capable of producing against 350 psi.
23. Tie well back into surface equipment and turn over to production.

Amoco Production Company

ENGINEERING CHART

SUBJECT Mudge B 10 A

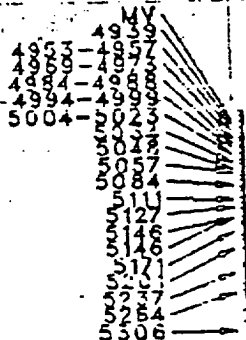
Sheet No. 01
 File
 Appn
 Date 1/25/93
 By PAE



MUDGE LS 010A 1605
 Location - 9J- 31N-11W
 SINGLE MV
 Orig. Completion - 3/78
 Last File Update - 1/89 by DDM

BOT OF 9.625 IN OD CSA 228
 20 LB/FT. H-40 CASING
 TOC - SURF

TOP OF 4.5 IN. LINER AT 2883
 BOT OF 7 IN OD CSA 3046, 20 LB/FT
 K-55 CASING
 TOC - 950



BOT OF 2.375 IN OD T96 AT 5315

P8TD AT 5363 FT.

TOTAL DEPTH 5380 FT.

BOT OF 4.5 IN OD LINER AT 5380
 10.5 LB/FT. K-55 CASING
 Cathodic Protection - ?