

**NEW MEXICO OIL CONSERVATION COMMISSION
WELL LOCATION AND ACERAGE DEDICATION PLAT**

All distances must be from the outer boundaries of the Section

Operator KOCH EXPLORATION COMPANY			Lease GARDNER		Well No. 4-A
Unit Letter M	Section 25	Township 32 NORTH	Range 9 WEST	County SAN JUAN	
Actual Footage Location of Well: 1030 feet from the SOUTH line and 870 feet from the EAST line					
Ground Level Elev. 6670	Producing Formation Mesa Verde		Pool Blanco	Dedicated Acreage: 320.78	Acres

- Outline the acreage dedicated to the subject well by colored pencil or hatchure marks on the plat below.
- If more than one lease is dedicated to the well, outline each and identify the ownership thereof (both as to working interest and royalty),
- If more than one lease of different ownership is dedicated to the well, have the interests of all owners been consolidated by communitization, unitization, force-pooling, etc?

() Yes () No If answer is "yes," type of consolidation

If answer is "no," list the owners and tract descriptions which have actually consolidated. (Use reverse side of this form if necessary.)

No allowable will be assigned to the well until all interests have been consolidated (by communitization, unitization, forced-pooling, or otherwise) or until a non standard unit, eliminating such interests, has been approved by the Commission.

CERTIFICATION

I hereby certify that the information contained herein is true and complete to the best of my knowledge and belief.

Vernon J. Lowe
Name

Vernon J. Lowe
Position

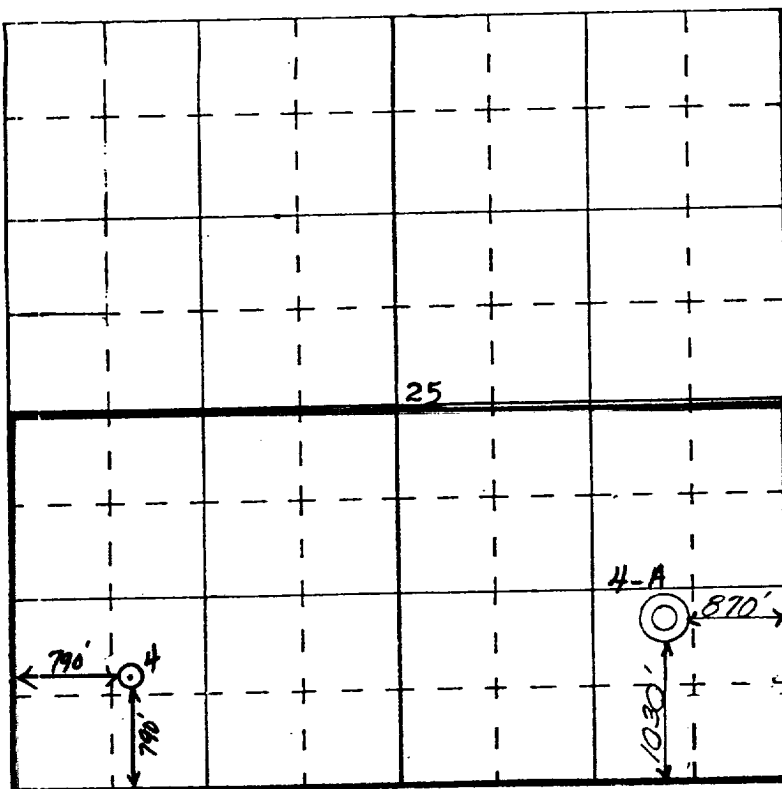
Asst. Operations Manager
Company
Koch Exploration Company
Div. of Koch Industries Inc.
Date

9-9-77

I hereby certify that the well location shown on this plat was plotted from field notes of actual surveys made by me or under my supervision and that the same is true and correct to the best of my knowledge and belief.

16 August 1977

Date Surveyed
James P. Leese
Registered Professional Engineer
and/or Land Surveyor **James P. Leese**



SCALE—4 INCHES EQUALS 1 MILE

SAN JUAN ENGINEERING COMPANY, FARMINGTON, N. M.

1463
Certificate No.