

UNITED STATES
DEPARTMENT OF THE INTERIOR
GEOLOGICAL SURVEY

APPLICATION FOR PERMIT TO DRILL, DEEPEN, OR PLUG BACK

1a. TYPE OF WORK

DRILL ☒DEEPEN ☐PLUG BACK ☐

b. TYPE OF WELL

OIL
WELL ☐GAS
WELL ☒

OTHER

SINGLE
ZONE ☒MULTIPLE
ZONE ☐

2. NAME OF OPERATOR

Aztec Oil & Gas Company

3. ADDRESS OF OPERATOR

P. O. Drawer 570, Farmington, New Mexico 87401

4. LOCATION OF WELL (Report location clearly and in accordance with any State requirements.)*

At surface

1650' FNL & 1380' FEL ✓

At proposed prod. zone

14. DISTANCE IN MILES AND DIRECTION FROM NEAREST TOWN OR POST OFFICE*

15. DISTANCE FROM PROPOSED*

LOCATION TO NEAREST
PROPERTY OR LEASE LINE, FT.
(Also to nearest drg. unit line, if any)

16. NO. OF ACRES IN LEASE

17. NO. OF ACRES ASSIGNED
TO THIS WELL

309.70

18. DISTANCE FROM PROPOSED LOCATION*
TO NEAREST WELL, DRILLING, COMPLETED,
OR APPLIED FOR, ON THIS LEASE, FT.

19. PROPOSED DEPTH

5351'

20. ROTARY OR CABLE TOOLS

Rotary

21. ELEVATIONS (Show whether DF, RT, GR, etc.)

6251'

22. APPROX. DATE WORK WILL START*

January 15, 1978

23.

PROPOSED CASING AND CEMENTING PROGRAM

SIZE OF HOLE	SIZE OF CASING	WEIGHT PER FOOT	SETTING DEPTH	QUANTITY OF CEMENT
12-1/4"	9-5/8"	36#	200'	130 cu. ft.
8-3/4"	7"	20#	3090'	393 cu. ft.
6-1/4"	4-1/2"	10.50#	2940'-5421'	431 cu. ft.
	2-3/8"	4.7#	5300'	

Surface formation is Nacimiento.

Top of the Ojo Alamo is at 1347'.

Top of the Pictured Cliffs is at 2790'.

Fresh water mud will be used to drill from surface to intermediate casing point.

An air system will be used to drill from intermediate casing point to TD. It is anticipated a Gamma Ray Induction and a Gamma Ray Density log be run at total depth.

No abnormal pressures or poisonous gases are anticipated in this well. It is expected that this well be drilled before April 1, 1978.

This depends on time required for approvals, rig availability and the weather.

Gas is dedicated.

IN ABOVE SPACE DESCRIBE PROPOSED PROGRAM: If proposal is to deepen or plug back, give data on present productive zone and proposed new productive zone. If proposal is to drill or deepen directionally, give pertinent data on subsurface locations and measured and true vertical depths. Give blowout preventer program, if any.

24.

SIGNED

TITLE

District Production Mgr.

DATE

Dec. 13, 1977

(This space for Federal or State office use)

PERMIT NO.

APPROVAL DATE

APPROVED BY

TITLE

DATE

CONDITIONS OF APPROVAL, IF ANY:

*See Instructions On Reverse Side

NWU-28

30-045-22860

5. LEASE DESIGNATION AND SERIAL NO.

SE-077652

6. IF INDIAN, ALLOTTEE OR TRIBE NAME

7. UNIT AGREEMENT NAME

8. FARM OR LEASE NAME

Harper

9. WELL NO.

#1A

10. FIELD AND POOL, OR WILDCAT

Blanco Mesa Verde

11. SEC., T., R., M., OR BLK.
AND SURVEY OR AREA

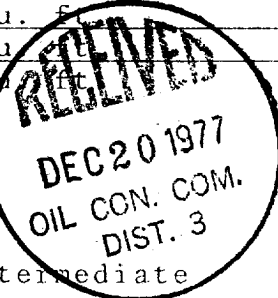
Section 14, T31N, R12W

12. COUNTY OR PARISH

13. STATE

San Juan

New Mexico



NEW MEXICO OIL CONSERVATION COMMISSION
WELL LOCATION AND ACREAGE DEDICATION PLAT

Form C-102
Supersedes C-128
Effective 1-1-65

All distances must be from the outer boundaries of the Section

Operator Aztec Oil & Gas Company			Lease Harper		Well No. 1A
Unit Letter G	Section 14	Township 31N	Range 12W	County San Juan	
Actual Footage Location of Well:					
1650		feet from the	North	line and	1380
				feet from the	East
				line	
Ground Level Elev: 6251	Producing Formation Mesa Verde		Pool Blanco		Dedicated Acreage: 309.70 Acres

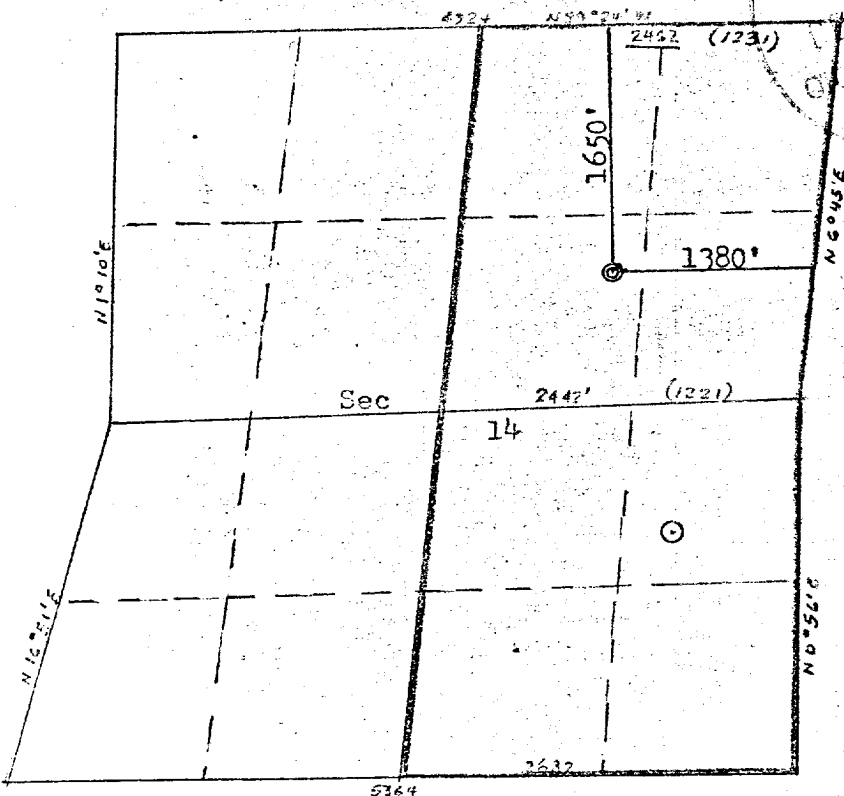
1. Outline the acreage dedicated to the subject well by colored pencil or hatchure marks on the plat below.
2. If more than one lease is dedicated to the well, outline each and identify the ownership thereof (both as to working interest and royalty).
3. If more than one lease of different ownership is dedicated to the well, have the interests of all owners been consolidated by communitization, unitization, force-pooling, etc?

☐ Yes ☐ No If answer is "yes," type of consolidation _____

If answer is "no," list the owners and tract descriptions which have actually been consolidated. (Use reverse side of this form if necessary.) _____

No allowable will be assigned to the well until all interests have been consolidated (by communitization, unitization, forced-pooling, or otherwise) or until a non-standard unit, eliminating such interests, has been approved by the Commission.

ILLEGIBLE



CERTIFICATION

I hereby certify that the information contained herein is true and complete to the best of my knowledge and belief.

Name _____
Position
District Production Mgr
Company
Aztec Oil & Gas Company
Date
December 13, 1977

I hereby certify that the well location shown on this plat was plotted from field notes of actual surveys made by me or under my supervision, and that the same is true and correct to the best of my knowledge and belief.

Date Surveyed
October 28, 1977
Registered Professional Engineer and Land Surveyor
Fred B. Kerr, Jr.
Certificate No.
3950

SCALE: 4"=1mile