

SURFACE USE PLAN
FOR HORTON NO. 1

1. Existing Roads:
 - a. See surveyors plat for actual staking.
 - b. The well site is located approximately Turn off on Aztec Dam Road and travel NW on White Horse Canyon Road 7 miles to Little Pump Canyon.
 - c. See Exhibit "B" for access roads.
 - d. Not applicable. This is not an exploratory well.
 - e. See Exhibit "B" for one mile radius road map.
 - f. Existing roads' maintenance or improvement (will, ~~will not~~) be necessary as follows: Maintain 1800' by blading. No surfacing material will be used.
2. Planned Access Roads: Length = 600'
 - a. See Exhibit "B".
 - b. Width = 14'; maximum grade = 3°
 - c. No turnouts.
 - d. Drainage = Water bars on any slopes and on road to prevent erosion.
 - e. Road will be cut into any arroyos and sloped across the bottom to maintain normal drainage. No major cuts or fills are necessitated. No culverts.
 - f. Road (~~will~~, will not) be surfaced.
 - g. No gates or cattle guards are needed.
 - h. Road is center line flagged
3. Location of Existing Wells.
 - a. See Exhibits "B" and "C" for well locations.
 - b. No water wells could be located within one mile of this well.
4. Location of Existing and/or Proposed Facilities.
 - a. See Exhibit "A". Lines are buried.
 - b. This is expected to be a dry gas well. If condensate is encountered, a 300 bbl steel tank painted per BLM to match the surrounding area, will be set on a gravel base near the well as shown on Exhibit "A". A dirt bank will be erected around the tank to contain any spills. The possible spill area will be fenced.
 - c. If well is productive, pits will be backfilled, leveled and reseeded to BLM specifications as soon as practical to original condition.
5. Location and type of Water Supply
 - a. Water will be hauled from the
 - b. Trucks will be used to haul water. No new roads will be necessary.
 - c. No water well will be drilled.
6. Source of Construction Materials.
 - a. No construction materials will be used. Surface soil will be stockpiled.
 - b. We will not be getting any construction materials from Federal or Indian lands.
 - c. No construction materials will be used.
 - d. No access roads for construction materials will be needed.
7. Methods for Handling Waste Disposal.
 - a. Cuttings will be disposed of in the reserve pit.
 - b&c. Drilling fluids and produced water will be collected in the reserve pit and hauled away to an approved disposal system or a separate disposal application will be submitted. Any produced oil will be run to the tank (see 4:8)
 - d&e. All detrimental waste will be hauled away, burned or buried with a minimum cover of 24" of dirt. Trash pit will be fenced with small mesh wire.
 - f. After the rig moves out, See 4:C. If unproductive, a dry hole marker will be installed and all pits will be filled, leveled and entire location reseeded to BLM specifications. Roads will be leveled and reseeded.
8. Ancillary Facilities.
 - a. No camps or airstrips will be needed in the drilling of this well.
9. Well Site Layout.
 - a. See Exhibit "A".
 - b. Pits will be unlined.
10. Plans for Restoration of Surface.
 - a. See 4:C and 7:A-F.
 - b. See 7:A-F or per BLM specifications for that area.
 - c. Prior to rig release, pits will be fenced and so maintained until clean up.
 - d. If any oil is on the pit, it will be removed or overhead flagged.
 - e. Rehabilitation operations will be done during the best weather conditions to promote regrowth in area. All seeding will take place between July 1 and Sept. 15.
11. Other information.
 - a. Site is located in flat prairie with bentonite and sand for soil. The vegetation is predominately sagebrush and cedar trees. A few deer are in this area. Road will be kept out of cedar trees where possible.

12. Operator's Representative.

- ### 13. Certification.

9 January 1978
Date

Existing Roads

600' of new 14' wide road

150'

100'

RESERVE PIT

EXHIBIT "A" LOCATION PAD

N

TOPSOIL STOCKPILE

FLARE PIT

BURN PIT

50'

150'

125'

175'

300 BBL PRODUCTION FACILITY FENCED & DIKED

RESTROOM

OFFICE

LOCATION PAD

BOREHOLE

RIG & CATWALK POSITION

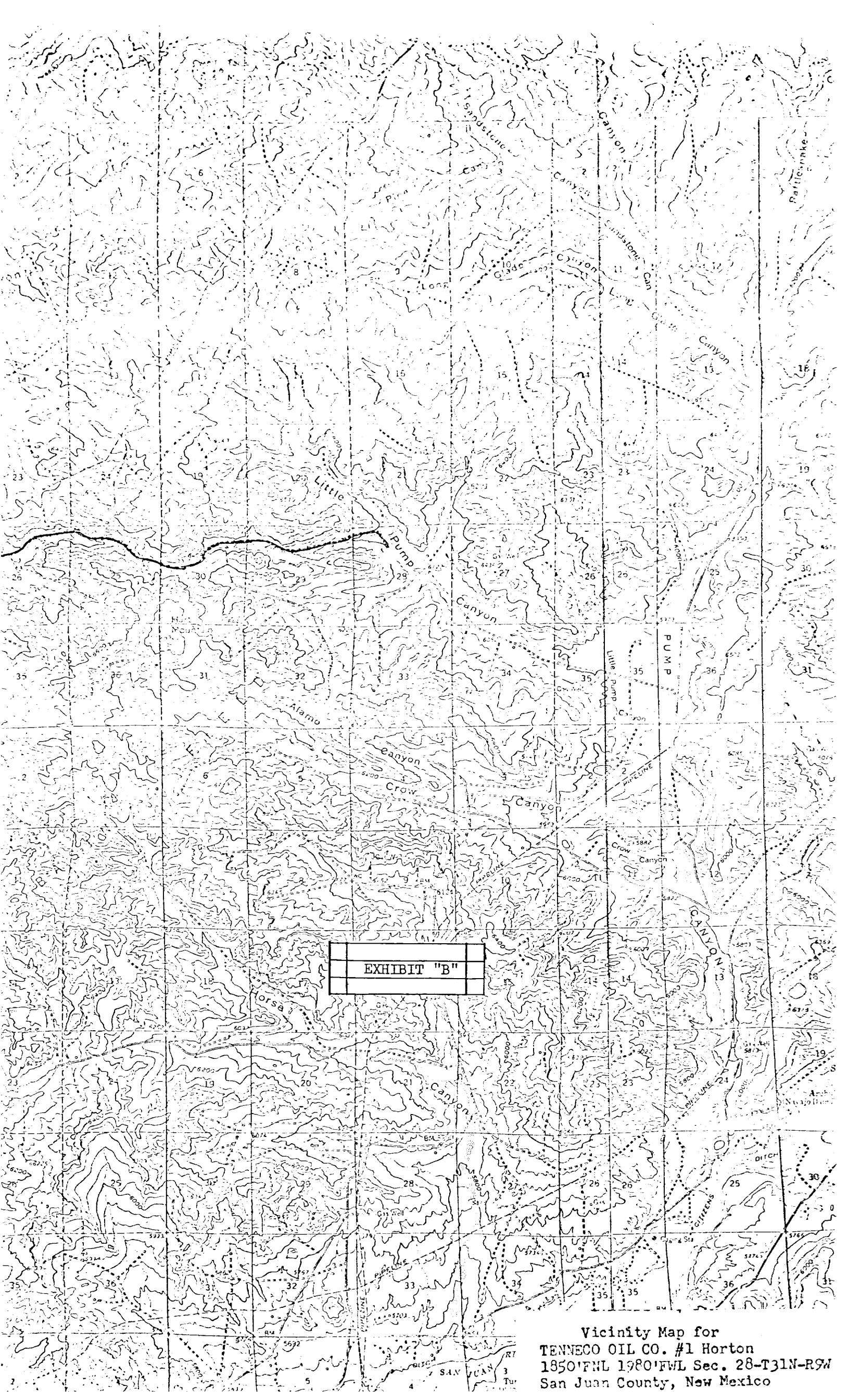
(Small mesh fence to contain trash)

C3'

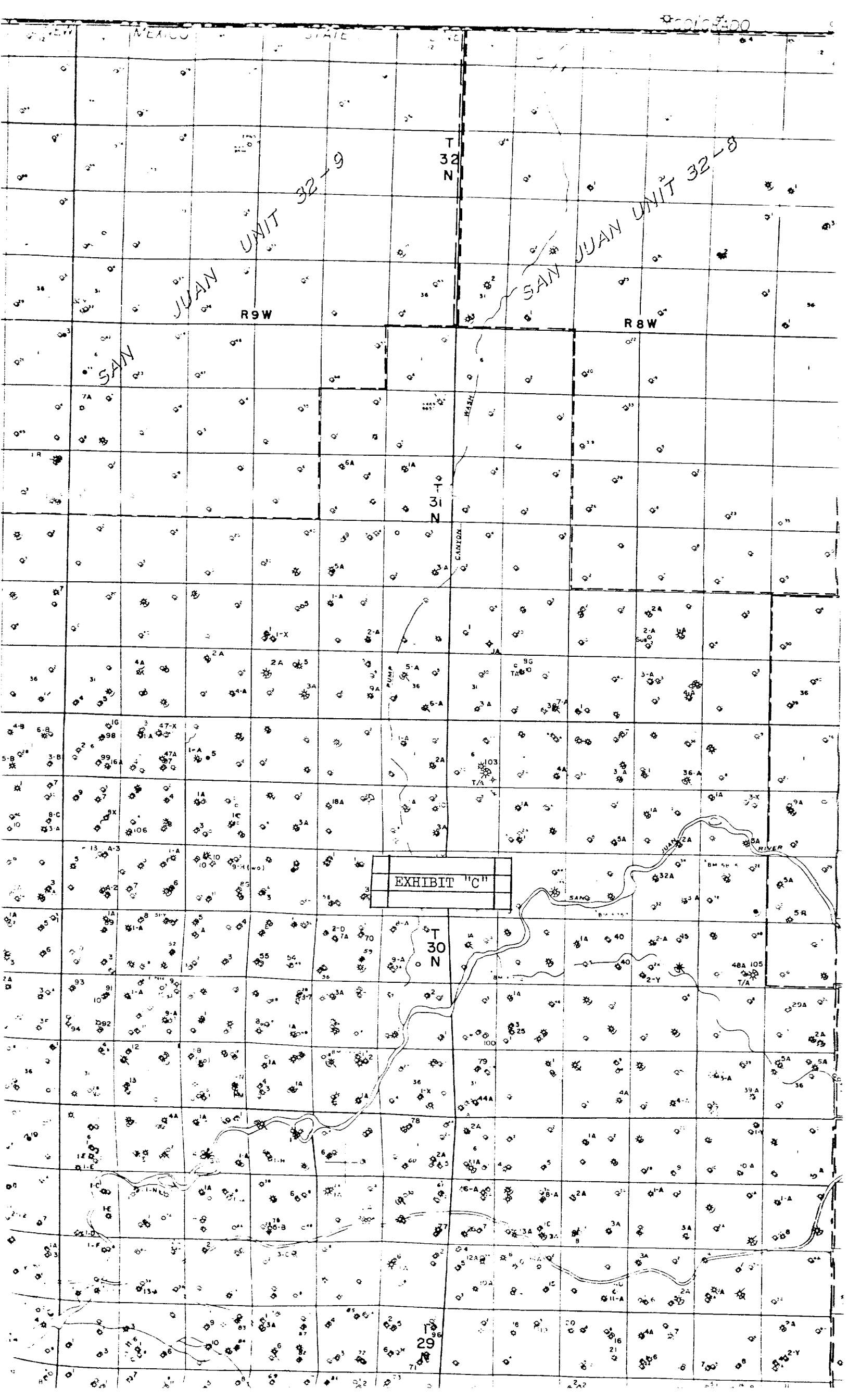
F3'

F3'

F3'



Vicinity Map for
TENNECO OIL CO. #1 Horton
1850'FWL 1980'FWL Sec. 28-T31N-R9W
San Juan County, New Mexico



NEW MEXICO STATE

32-9

SAN JUAN UNIT 32-9

T 32 N

SAN JUAN UNIT 32-8

R 9 W

R 8 W

SAN

T 31 N

CANYON

EXHIBIT "C"

T 30 N

T 29 N

