

District III
1000 Rio Brazos Rd. Aztec, NM 87410

State of New Mexico
Energy, Minerals and Natural Resources Department

SUBMIT 1 COPY TO
APPROPRIATE
DISTRICT OFFICE
AND 1 COPY TO
SANTA FE OFFICE

DEPUTY OIL & GAS INSPECTOR

OIL CONSERVATION DIVISION

2040 South Pacheco Street
Santa Fe, New Mexico 87505

FEB 28 1997

PIT REMEDIATION AND CLOSURE REPORT

RECEIVED
OCT 31 1996

~~OIL CON. DIST.~~
~~DIST. 3~~

Operator: PNM Gas Services (SRC) Telephone: 324-3764 Dist. 3

Address: 603 W. Elm Street Farmington, NM 87401

Facility or Well Name: F J Titt #2A

Location: Unit: O Sec. 35 T. 31 N R. 11 W County San Juan

Pit Type: Separator Dehydrator ✓ Other

Land Type: BLM ✓ State Fee Other

Pit Location: Pit dimensions: length 15 width 15 depth 4

(Attach diagram) Reference: wellhead ✓ other _____

Footage from reference: 115'

Direction from reference: 45 Degrees ✓ East North ✓
of
West South

Depth to Ground Water:	Less than 50 feet	(20 points)	0
	50 feet to 99 feet	(10 points)	
	Greater than 100 feet	(0 points)	

(Vertical distance from contaminants to seasonal high water elevation of ground water)

Wellhead Protection Area:	Yes	(20 points)
	No	(0 points)

(Less than 200 feet from a private domestic water source, or, less than 1,000 feet from all other water sources)

Distance to Surface Water:	Less than 200 feet	(20 points)	<u>0</u>
	200 feet to 1,000 feet	(10 points)	
	Greater than 1,000 feet	(0 points)	

(Horizontal distance to perennial lakes, ponds, rivers, streams, creeks, irrigation canals and ditches)

RANKING SCORE (TOTAL POINTS):

Date Remediation Started:

5/22/96

Date Completed:

5/24/96

Remediation Method:

Excavation

☒

Approx. Cubic Yard

266

(Check all appropriate sections)

Landfarmed

☒

Amount Landfarmed (cubic yds)

266

Other

Remediation Location:

Onsite

☒

Offsite

(i.e., landfarmed onsite, name and location of offsite facility)

Backfill Material Location:

General Description of Remedial Action:

Excavated contaminated soil to pit size of 21'x18'x19' and landfarmed soil onsite within a bermed area at a depth of 6" to 12". Soil was aerated by plowing/disking until soil met regulatory levels.

Ground Water Encountered:

No

☒

Yes

Depth

Final Pit Closure

Sampling:

Sample Location

5 pt. composite-4 side walls and center of pit bottom

(if multiple samples, attach sample result and diagram of sample locations and depths.)

Sample depth

19'

Sample date

5/22/96

Sample time

4:00:00 PM

Sample Results

Benzene (ppm)

0.0530

Total BTEX (ppm)

2.9821

Field headspace (ppm)

TPH

<

5.00

Method

8015A

Vertical Extent (ft)

Risk Assessment form attached

Yes

No

☒

Ground Water Sample:

Yes

-

No

☒

(If yes, attach sample results)

I HEREBY CERTIFY THAT THE INFORMATION ABOVE IS TRUE AND COMPLETE TO THE BEST OF MY KNOWLEDGE AND MY BELIEF

DATE

October 25, 1996

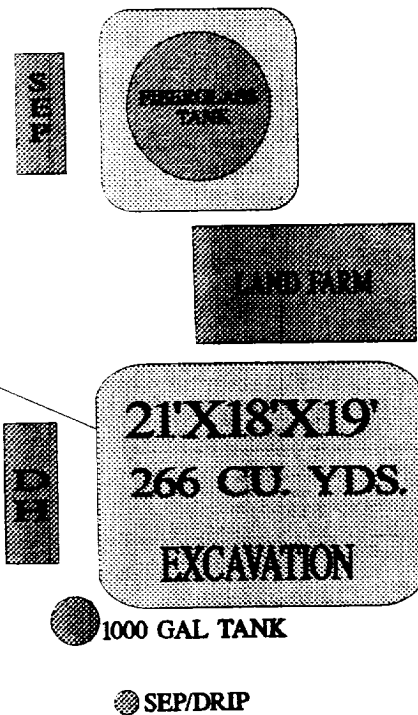
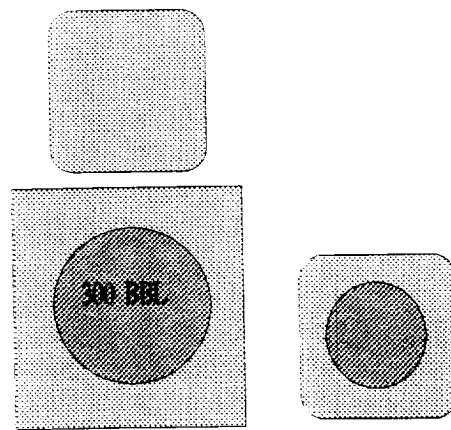
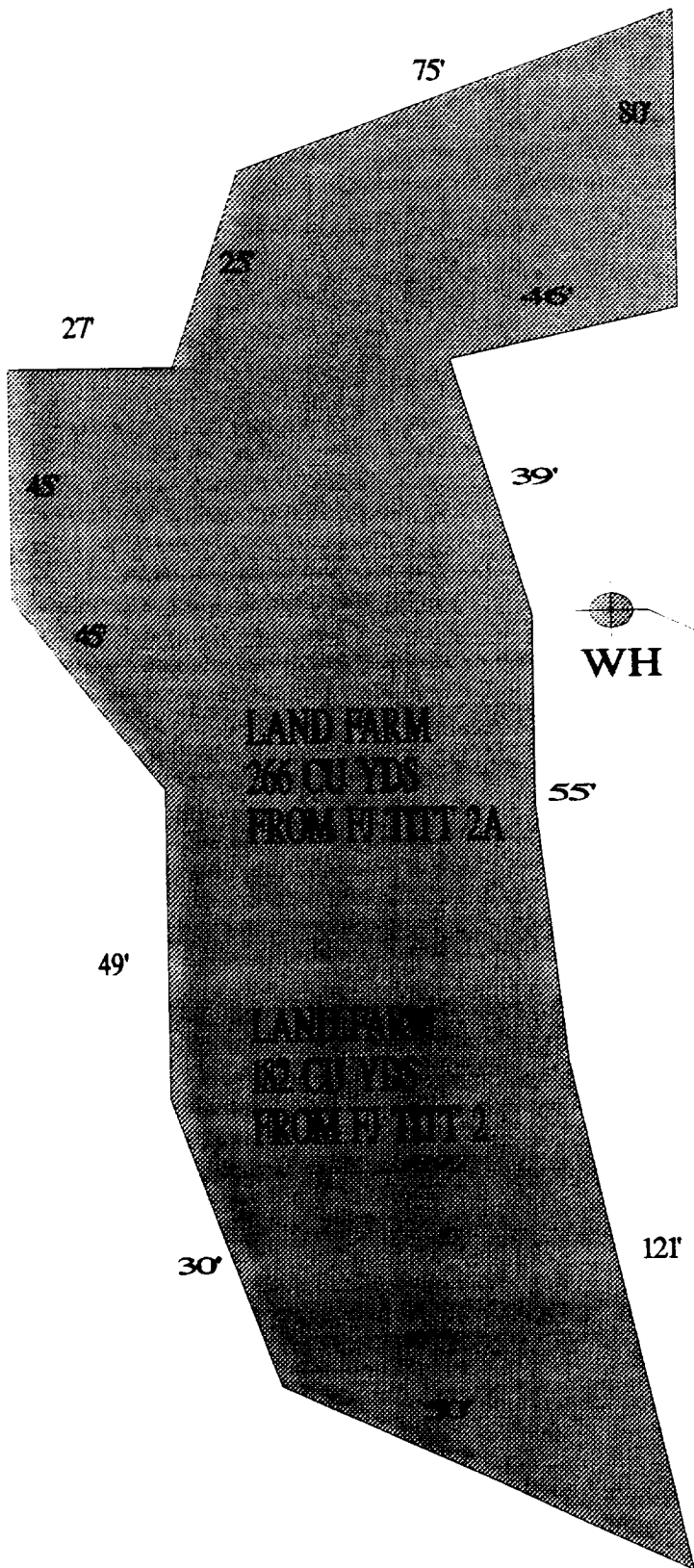
SIGNATURE

Maureen Gannon

PRINTED NAME
AND TITLE

Maureen Gannon

Environmental Engineer



FJ. TITT #2A EXCAVATION — 05/24/96

OFF: (505) 325-8786



LAB: (505) 325-5667

Diesel Range Organics

Attn: *Denver Bearden*
Company: *PNM Gas Services*
Address: *603 W. Elm*
City, State: *Farmington, NM 87401*

Date: *22-May-96*
COC No.: *4687*
Sample No. *10976*
Job No. *2-1000*

Project Name: ***PNM Gas Services - FJ Titt 2A***
Project Location: ***9605221600; Pit Excavation Composite Sample***
Sampled by: *RH* Date: *22-May-96* Time: *16:00*
Analyzed by: *DC* Date: *22-May-96*
Sample Matrix: *Soil*

Laboratory Analysis

<i>Parameter</i>	<i>Result</i>	<i>Unit of Measure</i>	<i>Detection Limit</i>	<i>Unit of Measure</i>
<i>Diesel Range Organics (C10 - C28)</i>	<i><5.0</i>	<i>mg/kg</i>	<i>5.0</i>	<i>mg/kg</i>

Quality Assurance Report

DRO QC No.: 0475-QC

Calibration Check

<i>Parameter</i>	<i>Method Blank</i>	<i>Unit of Measure</i>	<i>True Value</i>	<i>Analyzed Value</i>	<i>% Diff</i>	<i>Limit</i>
<i>Diesel Range (C10 - C28)</i>	<i><5.0</i>	<i>ppm</i>	<i>2,000</i>	<i>2,020</i>	<i>1.0</i>	<i>15%</i>

Matrix Spike

<i>Parameter</i>	<i>1- Percent Recovered</i>	<i>2 - Percent Recovered</i>	<i>Limit</i>	<i>%RSD</i>	<i>Limit</i>
<i>Diesel Range (C10-C28)</i>	<i>117</i>	<i>106</i>	<i>(70-130)</i>	<i>7</i>	<i>20%</i>

Method - SW-846 EPA Method 8015A mod. - Nonhalogenated Volatile Hydrocarbons by Gas Chromatography

Approved by: *[Signature]*
Date: *5/22/96*

P. O. BOX 2606 • FARMINGTON, NM 87499

- TECHNOLOGY BLENDING INDUSTRY WITH THE ENVIRONMENT -

OFF: (505) 325-8786



LAB: (505) 325-5667

AROMATIC VOLATILE ORGANICS

Attn: *Denver Bearden*
Company: *PNM Gas Services*
Address: *603 W. Elm*
City, State: *Farmington, NM 87401*

Date: *24-May-96*
COC No.: *4687*
Sample No. *10976*
Job No. *2-1000*

Project Name: *PNM Gas Services - FJ Titt 2A*
Project Location: *9605221600; Pit Excavation Composite Sample*
Sampled by: *RH* Date: *22-May-96* Time: *16:00*
Analyzed by: *DC* Date: *23-May-96*
Sample Matrix: *Soil*

Aromatic Volatile Organics

Component	Result	Units of Measure	Detection Limit	Units of Measure
<i>Benzene</i>	<i>53.0</i>	<i>ug/kg</i>	<i>0.2</i>	<i>ug/kg</i>
<i>Toluene</i>	<i>713.4</i>	<i>ug/kg</i>	<i>0.2</i>	<i>ug/kg</i>
<i>Ethylbenzene</i>	<i>132.1</i>	<i>ug/kg</i>	<i>0.2</i>	<i>ug/kg</i>
<i>m,p-Xylene</i>	<i>1639.2</i>	<i>ug/kg</i>	<i>0.2</i>	<i>ug/kg</i>
<i>o-Xylene</i>	<i>444.3</i>	<i>ug/kg</i>	<i>0.2</i>	<i>ug/kg</i>
	<i>TOTAL</i>	<i>2982.1</i>		<i>ug/kg</i>

Method - SW-846 EPA Method 8020 Aromatic Volatile Organics by Gas Chromatography

Approved by: *[Signature]*
Date: *5/24/96*

P. O. BOX 2606 • FARMINGTON, NM 87499

— TECHNOLOGY BLENDING INDUSTRY WITH THE ENVIRONMENT —

F.J. Titt #2A
Meridian
Sec. 35-31N-11W

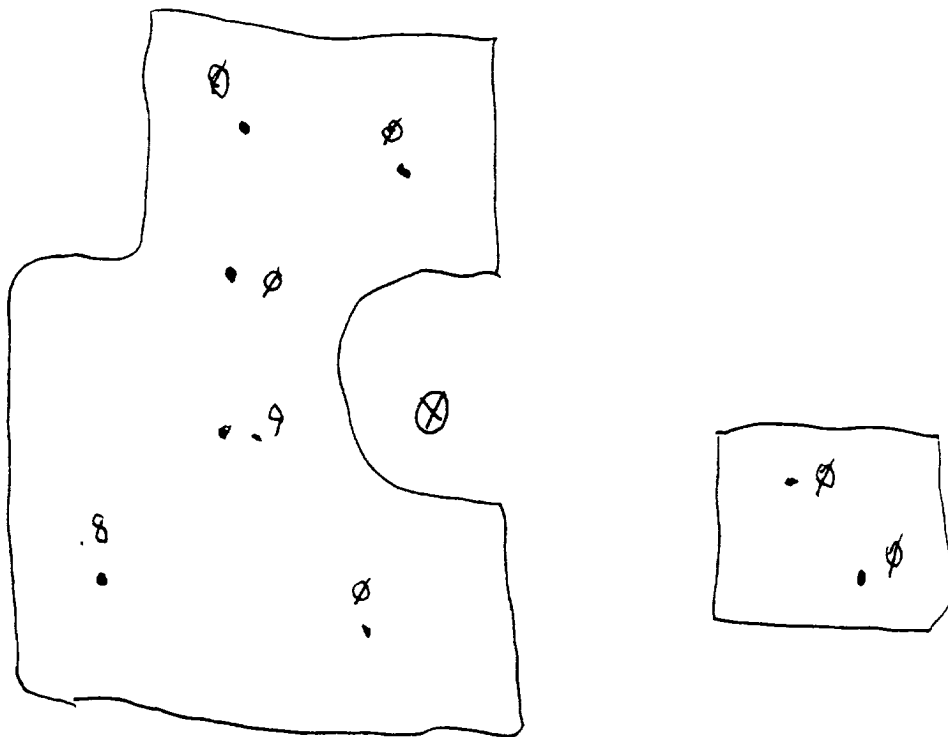
July 30, 1996

Land Farm: On Location
488 Yards (182 yards from F.J. Titt #2)

Composite Sample #: 9607311420

Soil Vapor Head-Space Reading = 4.7 ppm (PID)

Sample depths between 2" and 12"



OFF: (505) 325-5667



LAB: (505) 325-1556

Diesel Range Organics

Attn: *Denver Bearden*
Company: *PNM Gas Services*
Address: *603 W. Elm*
City, State: *Farmington, NM 87401*

Date: *2-Aug-96*
COC No.: *4940*
Sample No. *11644*
Job No. *2-1000*

Project Name: *PNM Gas Services - F.J. Titt 2A Landfarm*
Project Location: *9607301420; 8pt. Composite, 2"-12" depth*
Sampled by: *GC* Date: *30-Jul-96* Time: *14:20*
Analyzed by: *DC/HR* Date: *2-Aug-96*
Sample Matrix: *Soil*

Laboratory Analysis

<i>Parameter</i>	<i>Result</i>	<i>Unit of Measure</i>	<i>Detection Limit</i>	<i>Unit of Measure</i>
<i>Diesel Range Organics (C10 - C28)</i>	<i>< 5.0</i>	<i>mg/kg</i>	<i>5.0</i>	<i>mg/kg</i>

Quality Assurance Report

DRO QC No.: *0479-QC*

Calibration Check

<i>Parameter</i>	<i>Method Blank</i>	<i>Unit of Measure</i>	<i>True Value</i>	<i>Analyzed Value</i>	<i>% Diff</i>	<i>Limit</i>
<i>Diesel Range (C10 - C28)</i>	<i>< 5.0</i>	<i>ppm</i>	<i>2,000</i>	<i>2,221</i>	<i>11.1</i>	<i>15%</i>

Matrix Spike

<i>Parameter</i>	<i>1 - Percent Recovered</i>	<i>2 - Percent Recovered</i>	<i>Limit</i>	<i>%RSD</i>	<i>Limit</i>
<i>Diesel Range (C10-C28)</i>	<i>93</i>	<i>99</i>	<i>(70-130)</i>	<i>5</i>	<i>20%</i>

Method - SW-846 EPA Method 8015A mod. - Nonhalogenated Volatile Hydrocarbons by Gas Chromatography

Approved by: *[Signature]*
Date: *8/2/96*

P.O. BOX 2606 • FARMINGTON, NM 87499

- TECHNOLOGY BLENDING INDUSTRY WITH THE ENVIRONMENT -