

UNITED STATES  
DEPARTMENT OF THE INTERIOR  
GEOLOGICAL SURVEY

## APPLICATION FOR PERMIT TO DRILL, DEEPEN, OR PLUG BACK

## 1a. TYPE OF WORK

DRILL ☒DEEPEN ☐PLUG BACK ☐

## b. TYPE OF WELL

OIL  
WELL ☐GAS  
WELL ☒

OTHER

SINGLE  
ZONE ☒MULTIPLE  
ZONE ☐

## 2. NAME OF OPERATOR

Kimbark Operating Co.

## 3. ADDRESS OF OPERATOR

1860 Lincoln Street, #808, Denver, Colorado 80295

## 4. LOCATION OF WELL (Report location clearly and in accordance with any State requirements.)\*

At surface

1635' FNL and 1540' FEL, Section 7

At proposed prod. zone

Same

## 14. DISTANCE IN MILES AND DIRECTION FROM NEAREST TOWN OR POST OFFICE\*

6 miles north of Aztec, New Mexico

## 15. DISTANCE FROM PROPOSED\*

LOCATION TO NEAREST  
PROPERTY OR LEASE LINE, FT.  
(Also to nearest drig. unit line, if any)

1540'

## 18. DISTANCE FROM PROPOSED LOCATION\*

TO NEAREST WELL, DRILLING, COMPLETED,  
OR APPLIED FOR, ON THIS LEASE, FT.

275'

## 16. NO. OF ACRES IN LEASE

320

## 19. PROPOSED DEPTH

3200'

17. NO. OF ACRES ASSIGNED  
TO THIS WELL

160

## 20. ROTARY OR CABLE TOOLS

Rotary

## 21. ELEVATIONS (Show whether DF, RT, GR, etc.)

6268' G.R.

## 22. APPROX. DATE WORK WILL START\*

Spring 1978

## 23.

## PROPOSED CASING AND CEMENTING PROGRAM

SIZE OF HOLE	SIZE OF CASING	WEIGHT PER FOOT	SETTING DEPTH	QUANTITY OF CEMENT
12 1/4"	8 5/8"	24#	120'	Circ.
7 7/8"	4 1/2"	10.5#	T.D. 3200'	2 stage - circ.

1. Operator will test and maintain proper drilling equipment  
during all operations.

2. Drill to T.D., run logs.

3. Run csg., perf. and frac.

IN ABOVE SPACE DESCRIBE PROPOSED PROGRAM: If proposal is to deepen or plug back, give data on present productive zone and proposed new productive zone. If proposal is to drill or deepen directionally, give pertinent data on subsurface locations and measured and true vertical depths. Give blowout preventer program, if any.

## 24.

SIGNED

*W. K. Arbuckle*

TITLE

President

DATE

2/8/78

(This space for Federal or State office use)

PERMIT NO.

APPROVAL DATE

APPROVED BY

TITLE

DATE

RECEIVED

CONDITIONS OF APPROVAL, IF ANY:

FEB 15 1978

(Gas is dedicated)

\*See Instructions On Reverse Side

**NEW MEXICO OIL CONSERVATION COMMISSION  
WELL LOCATION AND ACERAGE DEDICATION PLAT**

All distances must be from the outer boundaries of the Section

Operator <b>KIMBARK OPERATING COMPANY</b>		Lease <b>HORTON</b>		Well No <b>5</b>
Unit Letter <b>G</b>	Section <b>7</b>	Township <b>31 NORTH</b>	Range <b>11 WEST</b>	County <b>SAN JUAN</b>
Actual Footage Location of Well: <b>1635</b> feet from the <b>NORTH</b> line and <b>1540</b> feet from the <b>EAST</b> line				
Ground Level Elev <b>6268</b>	Producing Formation <b>Pict. Cliffs</b>	Pool <b>Blanco PC</b>	Dedicated Acreage: <b>160</b> Acres	

1. Outline the acreage dedicated to the subject well by colored pencil or hachure marks on the plat below.
2. If more than one lease is dedicated to the well, outline each and identify the ownership thereof (both as to working interest and royalty), **one lease**
3. If more than one lease of different ownership is dedicated to the well, have the interests of all owners been consolidated by communitization, unitization, force-pooling, etc?

( ) Yes ( ) No If answer is "yes," type of consolidation .....

If answer is "no," list the owners and tract descriptions which have actually consolidated. (Use reverse side of this form if necessary.) .....

No allowable will be assigned to the well until all interests have been consolidated (by communitization, unitization, forced-pooling, or otherwise) or until a non standard unit, eliminating such interests, has been approved by the Commission.

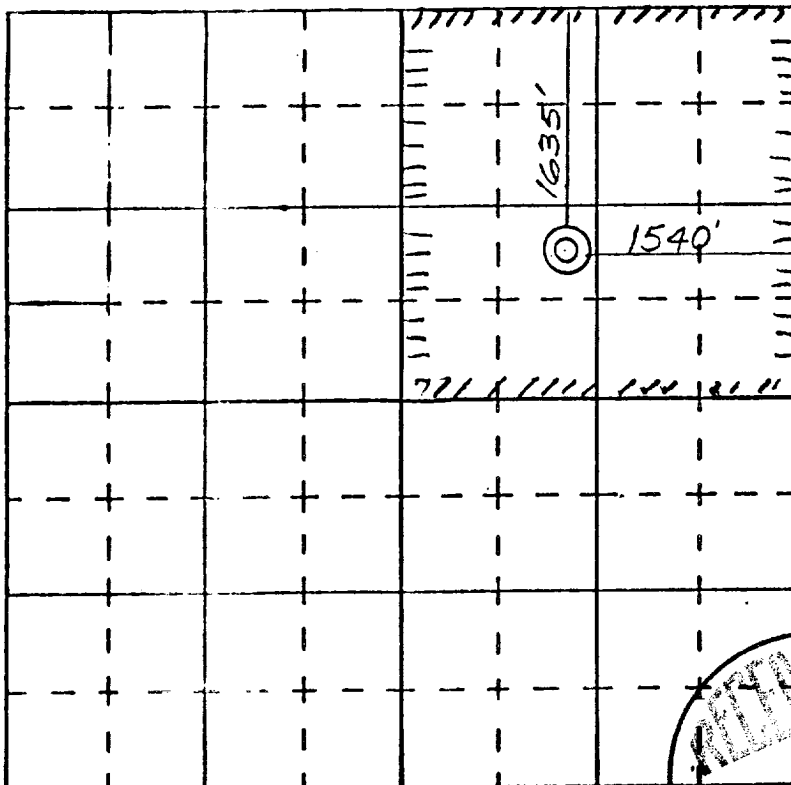
**CERTIFICATION**

I hereby certify that the information contained herein is true and complete to the best of my knowledge and belief.

*W K Arbuckle*  
 Name \_\_\_\_\_  
 Position **W. K. Arbuckle**  
 Company **President**  
**Kimbark Operating Co.**  
 Date **2/8/78**

I hereby certify that the well location shown on this plat was plotted from field notes of actual surveys made by me or under my supervision, and that the same is true and correct to the best of my knowledge and belief.

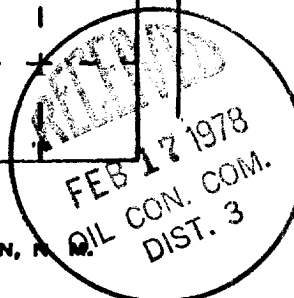
**18 January 1978**  
 Date Surveyed \_\_\_\_\_  
*James P. Lees*  
 Registered Professional Engineer  
 and/or Land Surveyor **James P. Lees**



SCALE—4 INCHES EQUALS 1 MILE

SAN JUAN ENGINEERING COMPANY,

FARMINGTON, N.M.



Certificate No. **1463**