

SUPPLEMENTAL INFORMATION TO FORM 9-331C
REQUIRED BY NTL-6
UTE MOUNTAIN TRIBAL "J" NO. 5
990' FNL x 1540' FWL, SECTION 12, T-31-N, R-14-W
SAN JUAN COUNTY, NEW MEXICO

The geologic name of the surface formation is the Cretaceous Cliffhouse.

The estimated tops of important geological formations bearing hydrocarbons are:

<u>FORMATION</u>	<u>DEPTH</u>	<u>ELEVATION</u>
Gallup	1972'	+4180'
Greenhorn	2542'	+3610'
Dakota	2662'	+3490'
Morrison	2912'	+3240'
Total Depth	2970'	

Estimated KB Elevation: 6152'

<u>EST. DEPTH</u>	<u>CSG. SIZE</u>	<u>WEIGHT</u>	<u>HOLE SIZE</u>	<u>SACKS CEMENT</u>	<u>-</u>	<u>TYPE</u>
300'	8-5/8"	24#	12-1/4"	300 - Class "B", 2% CaCl ₂ .		
2970'	4-1/2"	10.5#	7-7/8"	660 - Class "B", 6% Gel, 2# Med. Tuf Plug per sx.		
				100 - Class "B" Neat.		

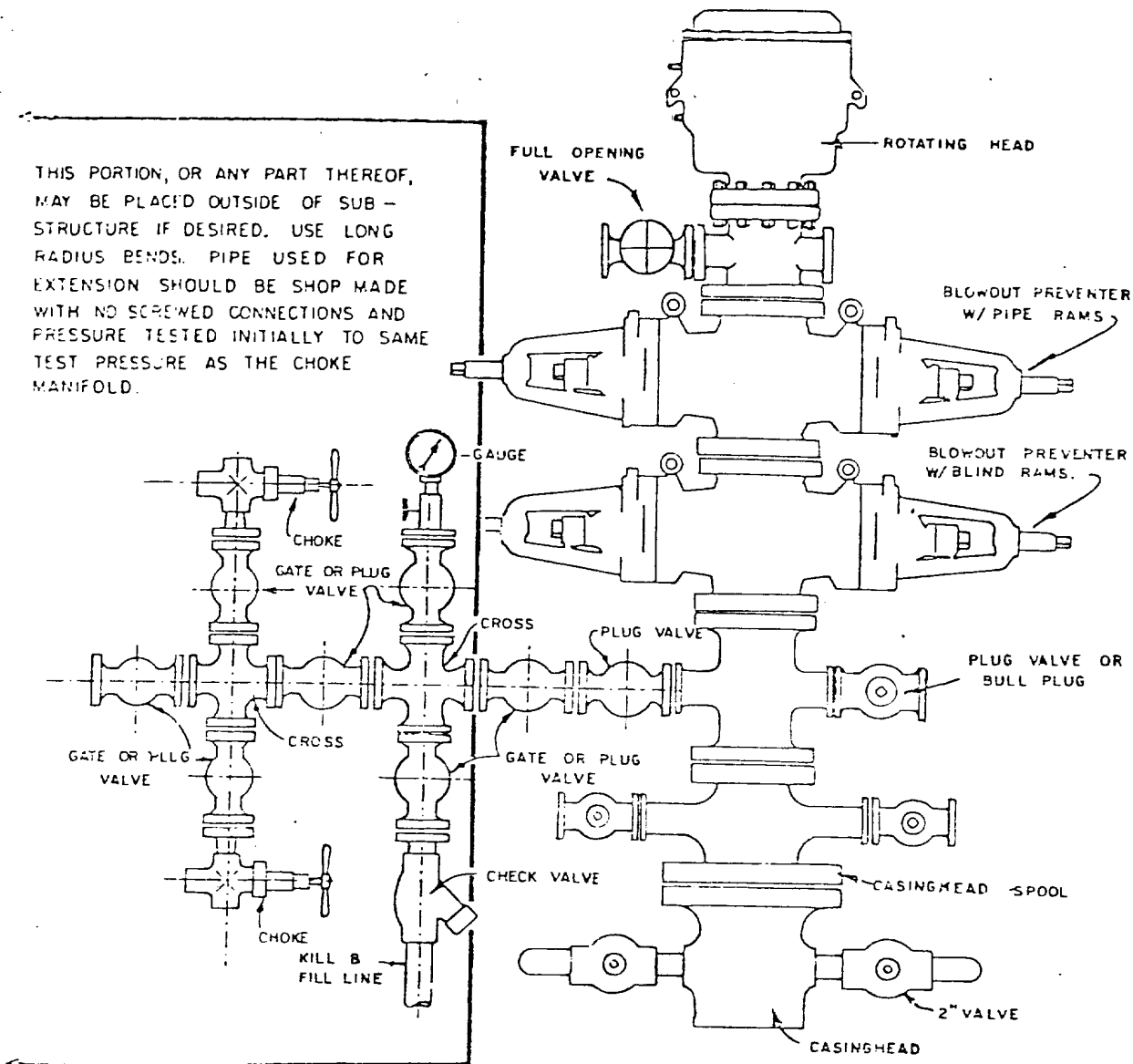
Amoco's standard blowout prevention will be employed; see attached drawing of our blowout preventer design.

Drilling fluid to TD will be a low solids non-dispersed mud system.

Amoco plans to run the following logs: From TD to 300', Induction-Electric and Density-Gamma Ray. No Cores or Drill Stem Tests will be taken.

In the past, drilling in this area has shown that no abnormal pressures, temperatures, nor hydrogen sulfide gas will be encountered at these depths.

THIS PORTION, OR ANY PART THEREOF, MAY BE PLAC'D OUTSIDE OF SUB-STRUCTURE IF DESIRED. USE LONG RADIUS BENDS. PIPE USED FOR EXTENSION SHOULD BE SHOP MADE WITH NO SCREWED CONNECTIONS AND PRESSURE TESTED INITIALLY TO SAME TEST PRESSURE AS THE CHOKE MANIFOLD.



BLOWOUT PREVENTER HOOKUP

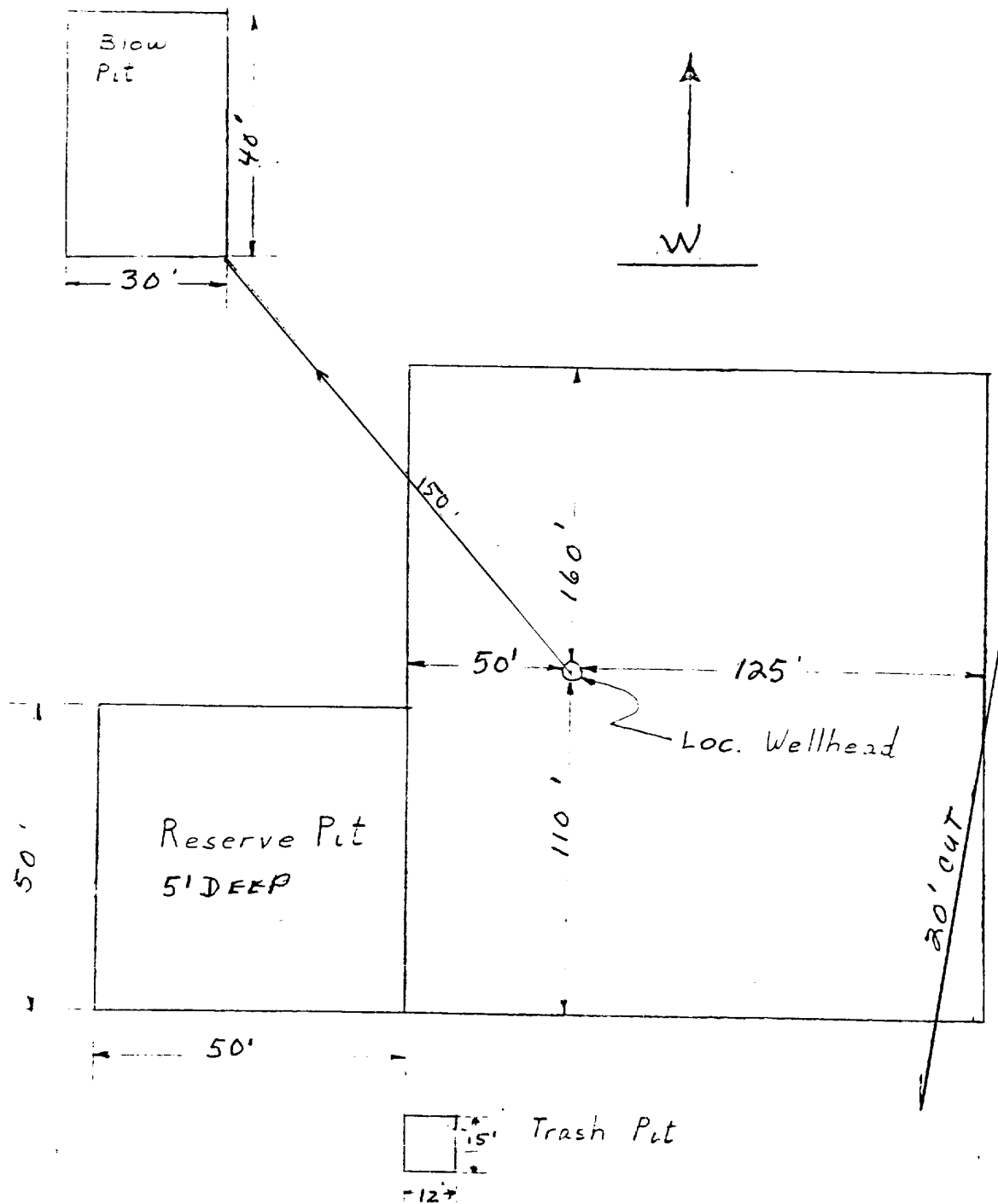
MULTI-POINT SURFACE USE PLAN

UTE MOUNTAIN TRIBAL "J" NO. 5
990' FNL & 1540' FWL, SECTION 12, T-31-N, R-14-W
SAN JUAN COUNTY, NEW MEXICO

1. The attached road map and sketch show the proposed route to the location and distances from towns.
2. An existing road will be improved 1.3 miles, and a new road will be built seven-tenths of a mile in length and will parallel El Paso's pipeline. A wash will be scooped out and graveled.
3. Existing oil and gas wells within a one-mile radius of our proposed well have been spotted on the vicinity map.
4. There is a 380-barrel storage tank and facilities located at Ute Mountain Tribal "H" No. 1, which is spotted on the vicinity map.
5. Water will be hauled from a private water well or the San Juan River, both approximately 12 miles.
6. No construction materials will be hauled in to build the location.
7. Excess mud will be hauled out of the reserve pit and bladed into existing roads.
8. There are neither airstrips nor camps in the vicinity.
9. The well site layout, reserve, burn and trash pits are shown on the attached Drill Site Specification Sheet. A cut of approximately 20 feet will be made on the north side of location.
10. Restoration of the surface will be accomplished by cleaning up and levelling upon completion of the well. Drilling mud will be hauled away and the reserve pit back filled. Reseeding of the site will be in accordance with instructions from the Bureau of Indian Affairs.
11. The general topography and soil characteristics are a rocky, sloping terrain, with pinon and cedar trees, with vegetation consisting of some sagebrush.

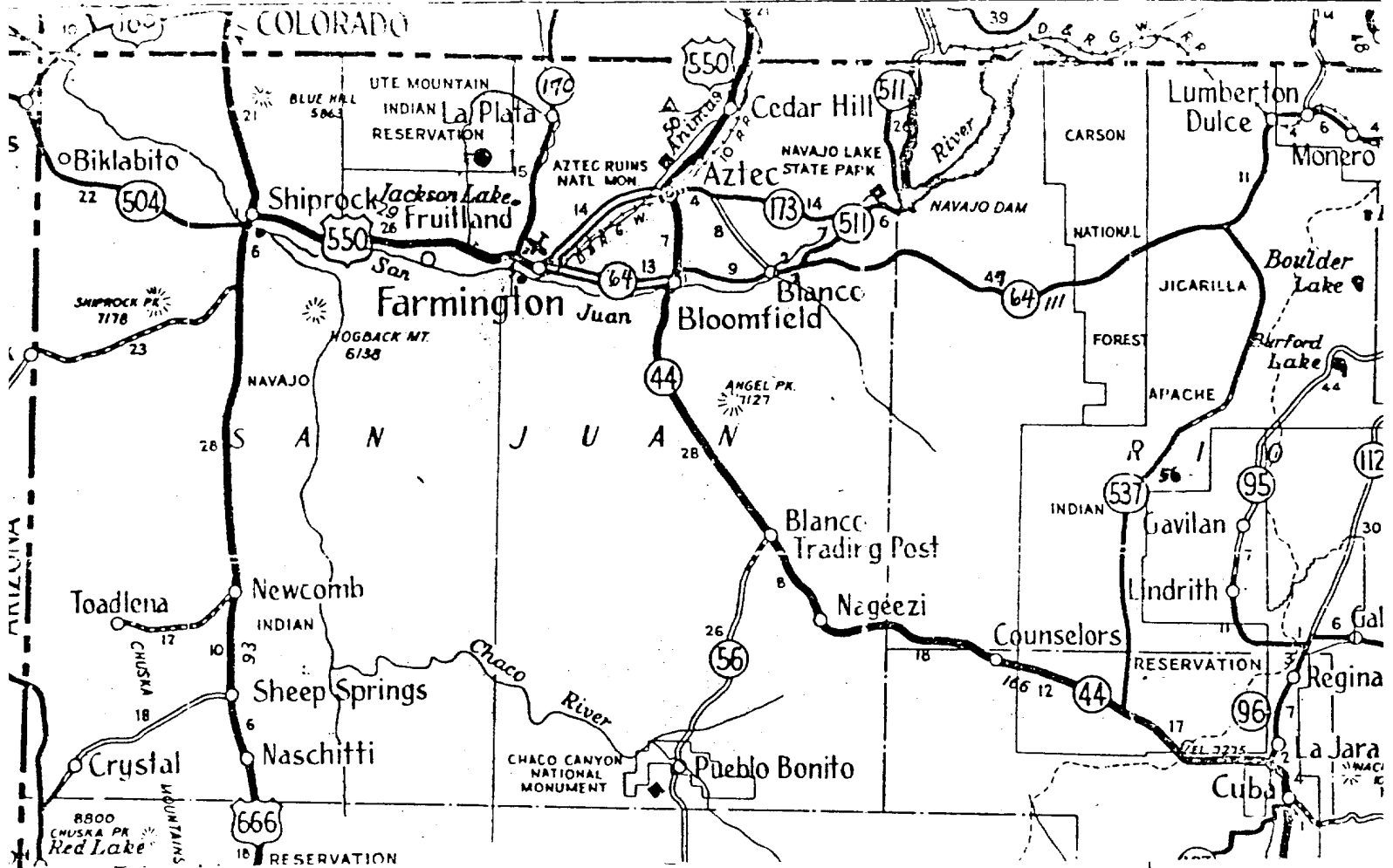
Representatives of the U. S. Geological Survey, Durango Office, and the BIA at Towaoc have inspected the site and found it suitable for drilling. Cultural resources inspection will be conducted by an Archaeologist from San Juan College.

12. A Certification Statement by Amoco's representative is included.



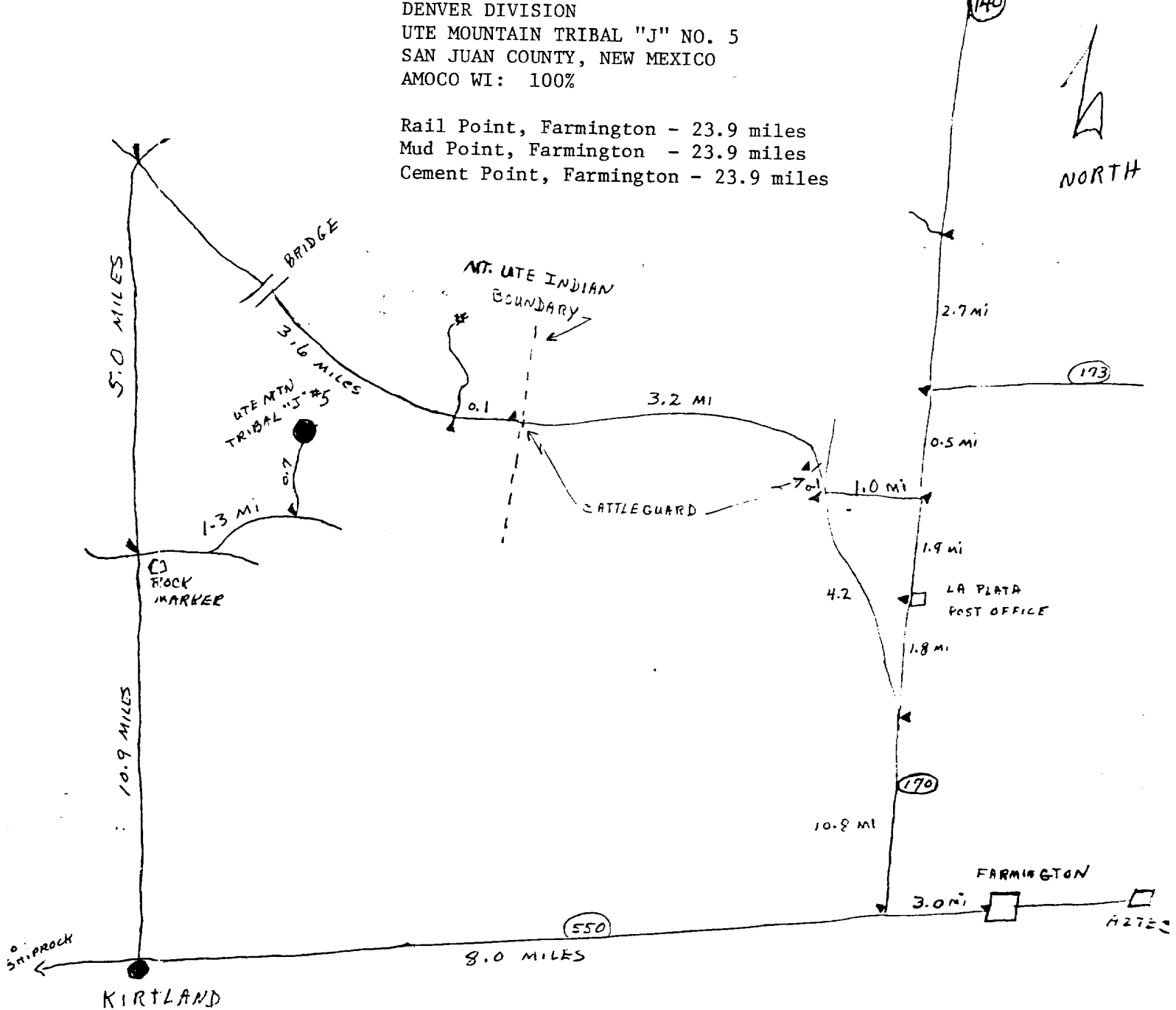
— APPROXIMATELY 1.2 Acres

Amoco Production Company		SCALE: NONE
DRILLING LOCATION SPECS		DRG.
UTE MOUNTAIN TRIBAL "J" NO. 5		NO.



FARMINGTON AREA TRAFFIC SKETCH
 DENVER DIVISION
 UTE MOUNTAIN TRIBAL "J" NO. 5
 SAN JUAN COUNTY, NEW MEXICO
 AMOCO WI: 100%

Rail Point, Farmington - 23.9 miles
 Mud Point, Farmington - 23.9 miles
 Cement Point, Farmington - 23.9 miles



UTE MOUNTAIN TRIBAL "J" NO. 5
990' FNL x 1540' FWL, SECTION 12, T-31-N, R-14-W
SAN JUAN COUNTY, NEW MEXICO

CERTIFICATION

I hereby certify that I, or persons under my direct supervision, have inspected the proposed drillsite and access route, that I am familiar with the conditions which presently exist; that the statements made in this plan are, to be best of my knowledge, true and correct; and, that the work associated with the operations proposed herein will be performed by AMOCO PRODUCTION
COMPANY and its contractors and sub-contractors in conformity with this plan and the terms and conditions under which it is approved.

MARCH 1, 1978

Date



Area Supt.

Name and Title

Amoco Production Company's Representative:

L. O. Speer, Jr.

Phone: Office: 505-325-8841; Home: 505-325-3247

Address: 501 Airport Drive
Farmington, NM 87401