

OPERATIONS PLAN

San Juan 32-7 Unit #50

I. LOCATION: SW/4 SE/4 Sec. 34, T32N, R7W

LEASE NUMBER: 078998

FIELD: Undesignated Pictured Cliff

ELEVATION: 6740' GR

II. GEOLOGY:

A. Formation Tops:

Ojo Alamo:	2355'	Total Depth: 3790'
Kirtland:	2478'	
Fruitland:	3195'	
Pictured Cliffs:	3640'	

B. Logging Program: I-ES and Density at T.D.

C. Coring Program: None

D. Testing Program: None

III. DRILLING:

A. Anticipated starting date and duration of activities:

B. BOP: Blind rams and pipe rams, 10', 900 series, double gate, rated at 3000 PSI.

C. Mud Program:

a) Spud Mud: Water, lime and gel.

b) Surface to 3000'.

Starloss: CMC mud

Viscosity: 25-30 sec/qt.

Weight: 8.9-9.0 #/gal.

Water Loss: 7-12 cc

Ph: 8.5-9.5

c) From 3000' to 3790'.

Starloss: CMC Hy-gel mud

Viscosity: 38-80 sec/qt.

Weight: 9.0-9.5 #/gal.

Water Loss: 6-8 cc

Ph: 8.5-9.5

IV. MATERIALS:

A. Casing Program:

Hole Size	Depth O.H.	Casing Size	Wt. & Grade	Depth Set
12 1/4"	150	8 5/8"	24# K-55	150'
6 3/4"	150'-3790'	2 7/8"	6.4# K-55	3790'

V. CEMENTING:

- A. Surface Casing 8 5/8" - Use 100 sks. Class "B" cement with 1/4# flocele per sack and 3% calcium chloride (100% excess to circulate). WOC 12 hours. Test surface casing to 600 PSI for 30 minutes.
- B. Production Casing 2 7/8" - Use 210 sacks 65/35 poz with 10% gel and 1/4 cu. ft. fine gilsonite per cu. ft. slurry and tail in with 50 sacks Class "B" cement with 2% calcium chloride. WOC hours. Run temperature survey after 12 hours.

DER
DER /ch

NORTHWEST PIPELINE CORPORATION

MULTI - POINT SURFACE USE PLAN

for the

San Juan 32-7 Unit

Well Number 50

1. Existing Roads: See attached topographic map. All existing roads used, shall be maintained in a serviceable condition at all times during the drilling operation.
2. Planned Access Roads: See attached topographic map. Maximum grade is approximately 1%. The road surface will not exceed twenty feet in width. Upon completion of drilling operations the access road will be adequately drained to control runoff and soil erosion. Drainage facilities may include ditches, water bars, culverts or any other measure deemed necessary. All activities will be confined to the access road and drill pad.
3. Location of Existing Wells: See attached topographic map.
4. Location of Tank Batteries; Production Facilities; and Production, Gathering and Service Lines: See attached topographic map for locations of existing and proposed gas gathering lines.
5. Location and Type of Water Supply: Water needed for the drilling operation will be hauled from the Pine River.
6. Source of Construction Materials: No additional materials will be needed.
7. Methods for Handling Waste Disposal: All garbage, debris, and trash will be buried at least three feet deep. A portable toilet will be supplied for human waste. After drilling operations have been completed the reserve pit will be fenced and the liquid portion will be allowed to evaporate before the location is cleaned up and leveled. The earthen pits will not be located on natural drainages and will be constructed in such a manner so that they will not leak. Any evaporator pit containing toxic liquids will be fenced.
8. Ancillary Facilities: There will be no camps or airstrips associated with the drilling of this well.
9. Well Site Layout: See attached location layout sheet. There will be a drainage ditch above the cut slope.
10. Plans for Restoration of the Surface: Upon completion of drilling, the location will be cleaned, and leveled so that no cut or fill banks will be steeper than 3:1.

All of the area disturbed in connection with the drill site will be seeded as close as possible for any above ground equipment while still allowing for access to the equipment. Seeding will be done within one year after drilling is completed and during the period from July 1 through September 15. Seeding will be done with seed Mixture #1.

All equipment above ground will be painted a non-glare, non-reflective, non-chalking color that simulates the natural color of the site. For this well code number 595-34127, green.

11. Other Information: If, during operations, any historic or prehistoric ruin, monument or site, or any object of antiquity is discovered, then work will be suspended and the discovery will be reported to the District Manager of the BLM.

All liquids from the line will be contained at the site unless otherwise specified by the surface agency's representative.

The area covered by the location and proposed access road is gently sloped with scattered brush and some grasses.

12. Operator's Representative: D.E. Richardson, P.O. Box 90 -- Farmington, New Mexico 87401. Phone: 327-5351 Extension #62.

13. Certification:

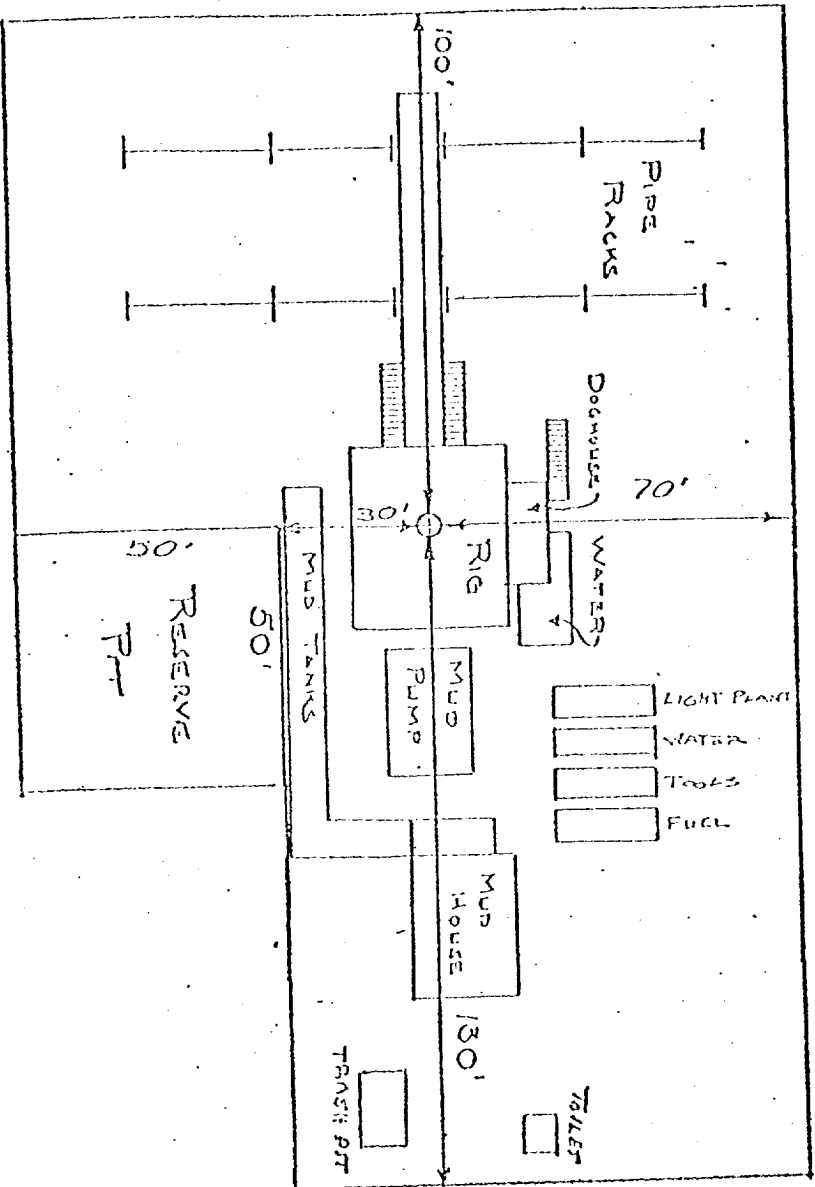
I hereby certify that I have inspected the proposed drillsite and access route; that I am familiar with the conditions which presently exist; that the statements made in this plan are, to the best of my knowledge true and correct; and, that the work associated with the operations proposed herein will be performed by Northwest Pipeline Corporation and its contractors and subcontractors in conformity with this plan and the terms and conditions under which it is approved.

03-28-78
Date

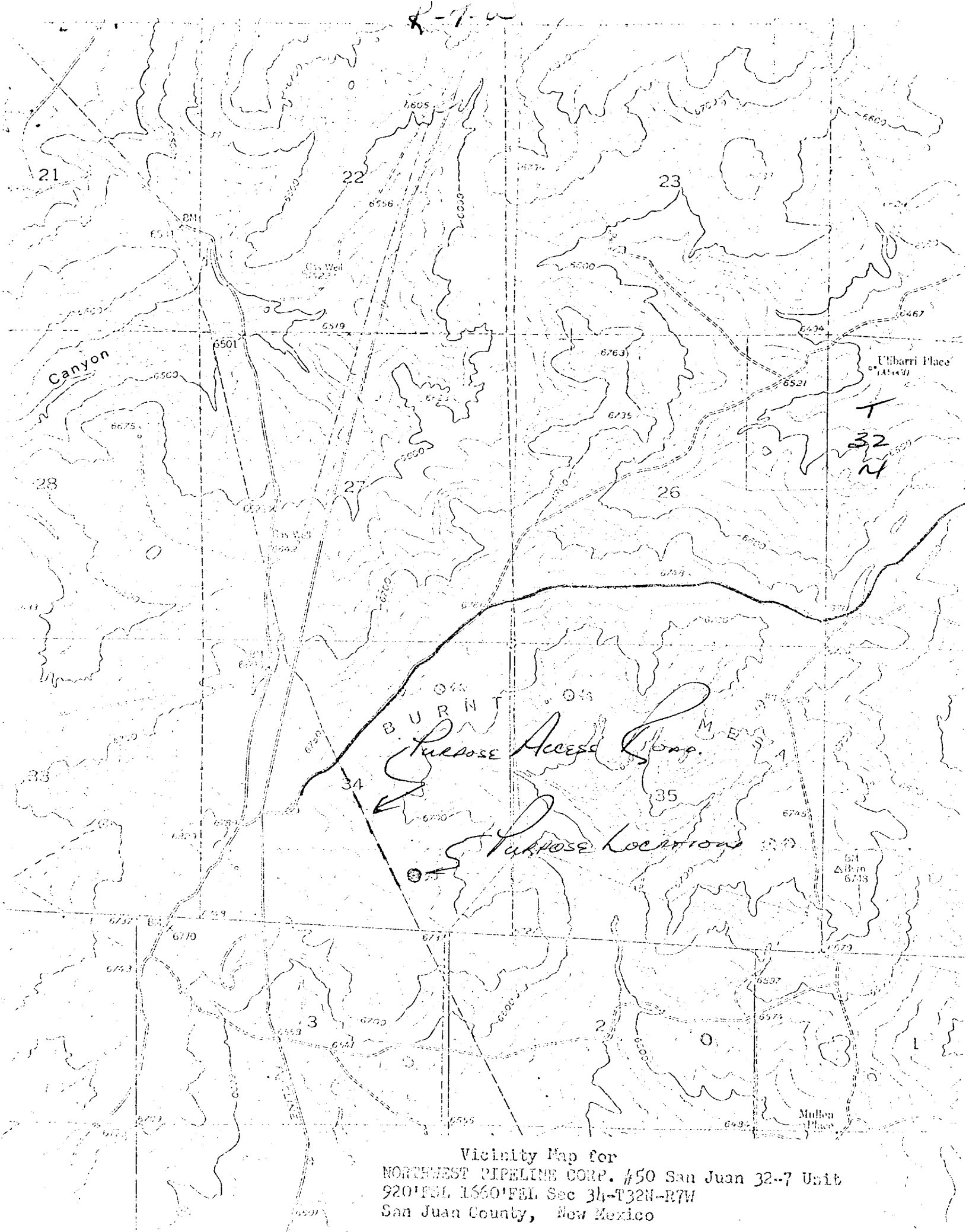

D.E. Richardson
Drilling Engineer

DER/ch

NORTH WEST PIPELINE CORPORATION San Juan 32-7 Unit # 50
 LOCATION LAYOUT



DATE: 03-21-78
 SCALE: 1cm = 20'



Vicinity Map for
NORTHWEST PIPELINE CORP. #50 San Juan 32-7 Unit
920'FEL 1560'FEL Sec 34-T32N-R7W
San Juan County, New Mexico