

submitted in lieu of Form 3160-5

UNITED STATES
DEPARTMENT OF THE INTERIOR
BUREAU OF LAND MANAGEMENT

Sundry Notices and Reports on Wells

070 MAR 17 PM 3:55

1. Type of Well
GAS

2. Name of Operator

**BURLINGTON
RESOURCES**

OIL & GAS COMPANY

3. Address & Phone No. of Operator

PO Box 4289, Farmington, NM 87499 (505) 326-9700

4. Location of Well, Footage, Sec., T, R, M

805' FSL, 1810' FWL, Sec. 28, T-31-N, R-9-W, NMPM

N

5. Lease Number
SF-080376A

6. If Indian, All. or
Tribe Name

7. Unit Agreement Name

8. Well Name & Number
Sheets #3

9. API Well No.
30-045-22991

10. Field and Pool
Blanco Pictured Cliffs

11. County and State
San Juan Co, NM

12. CHECK APPROPRIATE BOX TO INDICATE NATURE OF NOTICE, REPORT, OTHER DATA

Type of Submission

☒ Notice of Intent

☐ Subsequent Report

☐ Final Abandonment

Type of Action

☐ Abandonment

☐ Recompletion

☐ Plugging Back

☐ Casing Repair

☐ Altering Casing

☒ Other - Bradenhead repair

☐ Change of Plans

☐ New Construction

☐ Non-Routine Fracturing

☐ Water Shut off

☐ Conversion to Injection

13. Describe Proposed or Completed Operations

It is intended to repair the bradenhead of the subject well according to the attached procedure and wellbore diagram.

RECEIVED
MAR 24 1997

OIL CON. DIV.
DIST. 3

14. I hereby certify that the foregoing is true and correct.

Signed [Signature] (VGW5) Title Regulatory Administrator Date 3/14/97

(This space for Federal or State Office use)

APPROVED BY [Signature] Title _____ Date MAR 20 1997

CONDITION OF APPROVAL, if any:

NMOC

WORKOVER PROCEDURE - BRADENHEAD REPAIR

Sheets #3

Blanco Pictured Cliffs
SW/4 Sec. 28, T31N, R09W
San Juan Co., New Mexico
DPNO 45610A

1. Comply to all NMOCD, BLM, and BROG regulations. Conduct safety meeting for all personnel on location. **Notify BR Regulatory (Peggy Bradfield, 326-9727) and the appropriate Regulatory Agency prior to pumping any cement job. If an unplanned cement job is required, approval is required before the job can be pumped. If verbal approval is obtained, document the approval in Dims/Wims.** As much time as possible is needed for the Agency to be able to show up for the cement job.
2. Test location rig anchors and repair if necessary. Prepare blow pit. MOL and RU daylight pulling unit. Install a 400 bbl frac tank and an atmospheric blow tank. NU blooie line to blow pit, and relief line to atmospheric tank. Fill frac tank as needed with 1% KCl water.
3. Rig-up wireline and check tubing for obstructions or plunger lift equipment. Blow down production tubing (108 jts. of 1 1/4", 2.3#, IJ set at 3039') to atmospheric tank. Control well with 1% KCl water as needed. ND wellhead and NU BOP's. Test and record operation of BOP's. Send wellhead to A-1 Machine or WSI for inspection.
4. PU on tubing and strap out of hole. Visually inspect tubing (on trip), and replace all bad joints that are in bad condition. Note any buildup of scale, and notify Operations Engineer. LD 1 1/4" tubing. .
5. PU 2 3/8" workstring. TIH with 4 1/2", 10.5# casing scraper to 2950'. TOOH. PU 4 1/2" RBP and TIH. Set RBP at 2900'. Pressure test 4 1/2" casing to 1000 psig. Spot one sack of sand on top of RBP.
6. Run CBL (with 1000 psig pressure) to determine TOC. Estimated TOC @ 800' per temperature survey. Contact Operations Engineer for design of squeeze cement.
7. Perforate 2-4 squeeze holes and PU 4 1/2" fullbore packer. Set packer 200' above squeeze holes. Pressure up backside to 500 psig. Establish rate into perforations with bradenhead valve open. Max pressure 1000 psig.
8. Mix and pump cement slurry. Displace cement to packer, close bradenhead valve and squeeze 1 to 2 bbl of cement into perforations. WOC 12 hours (overnite).
9. Release packer and TOH. TIH with 3 7/8" bit and drill out cement. Pressure test casing to 1000 psig. Re-squeeze as necessary to hold pressure.
10. TIH with retrieving tool and retrieve RBP from 4 1/2" casing. POOH and LD 4 1/2" RBP. TIH with 3 7/8" bit and CO to PBTD with air. Blow well clean and gauge production. POOH and LD workstring.
11. RIH open ended with 1 1/4" tubing with SN with pump-out plug one joint off bottom, (rabbit tubing in derrick before running in hole.) Broach tubing and land @ 3038'.
12. ND BOP's and NU wellhead. Obtain final gauge. Release rig.

Recommend:

[Signature]
Operations Engineer

Approve:

[Signature] 3/1/97
Drilling Superintendent

Contacts: Operations Engineer

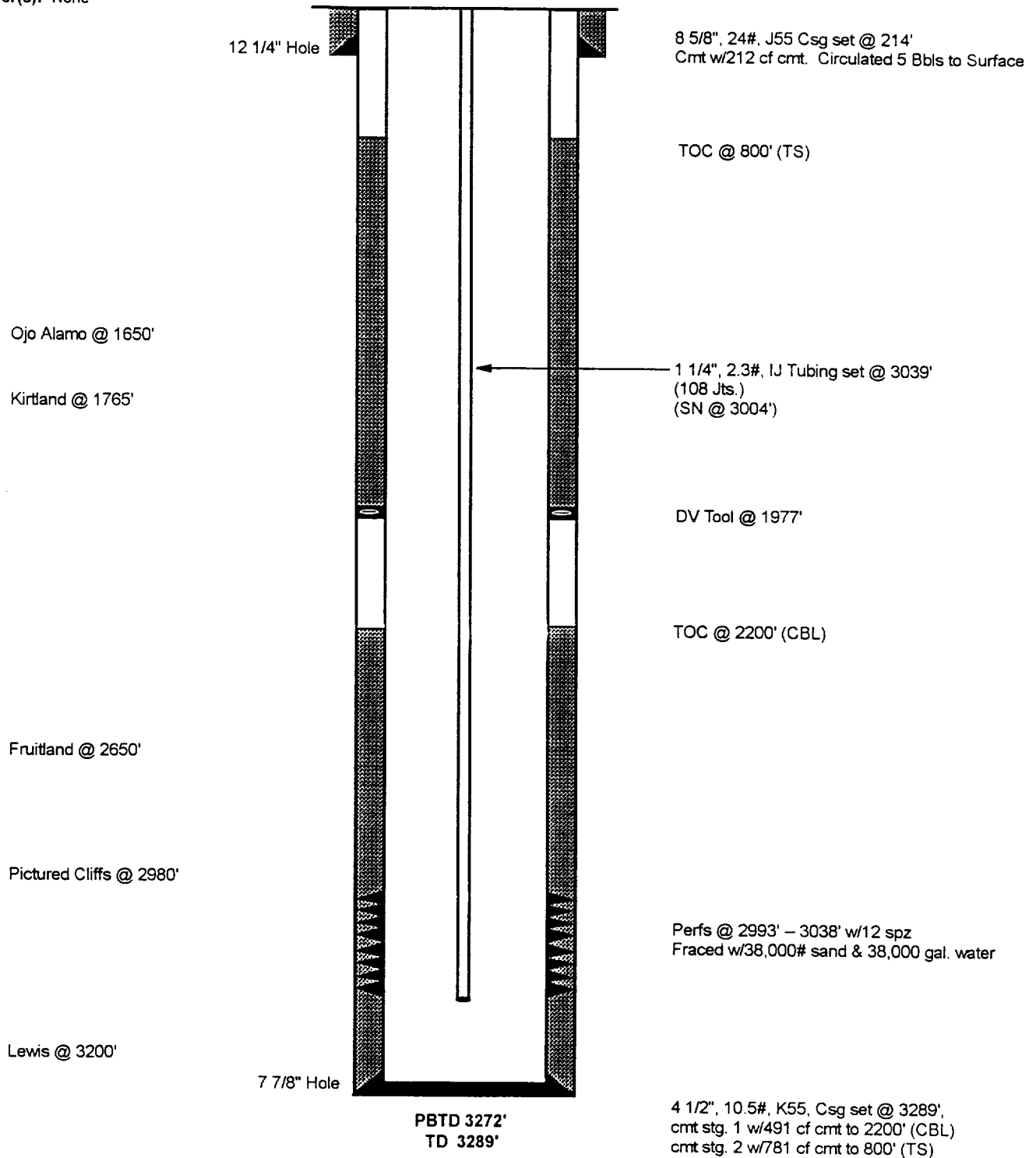
Gaye White

326-9875

Sheets #3
CURRENT -- 2/19/97

Spud: 2-4-79
Completed: 4-18-79
Elevation: 6179' (GL)
 6189' (KB)
Logs: CBL, Neutron-GR-Density, TS
Workover(s): None

Blanco Pictured Cliffs
DPNO 45610A
805' FSL, 1810' FWL,
Section 28, T-31-N, R-9-W, San Juan County, NM
Latitude/Longitude: 36° 25.09554' – 108° 37.68216'



<u>CASING PRESSURES</u>		<u>PRODUCTION HISTORY</u>		<u>INTEREST</u>	<u>PIPELINE</u>
Initial SICP (4/79)	869 psi	Gas Cum:	1.9 Bcf	GW: 100.00%	EPNG
Current SICP (6/92):	500 psi	Current (12/96)	67.5 Mcf/d	NRI: 82.50%	
		Oil Cum:	2.5 Mbo	SJBT: 0.00%	
		Current (12/96)	1 Bo/d		