

NEW MEXICO OIL CONSERVATION COMMISSION
WELL LOCATION AND ACREAGE DEDICATION PLAT

Form O-127
Supersedes O-123
Effective 1-1-65

All distances must be from the outer boundaries of the Section.

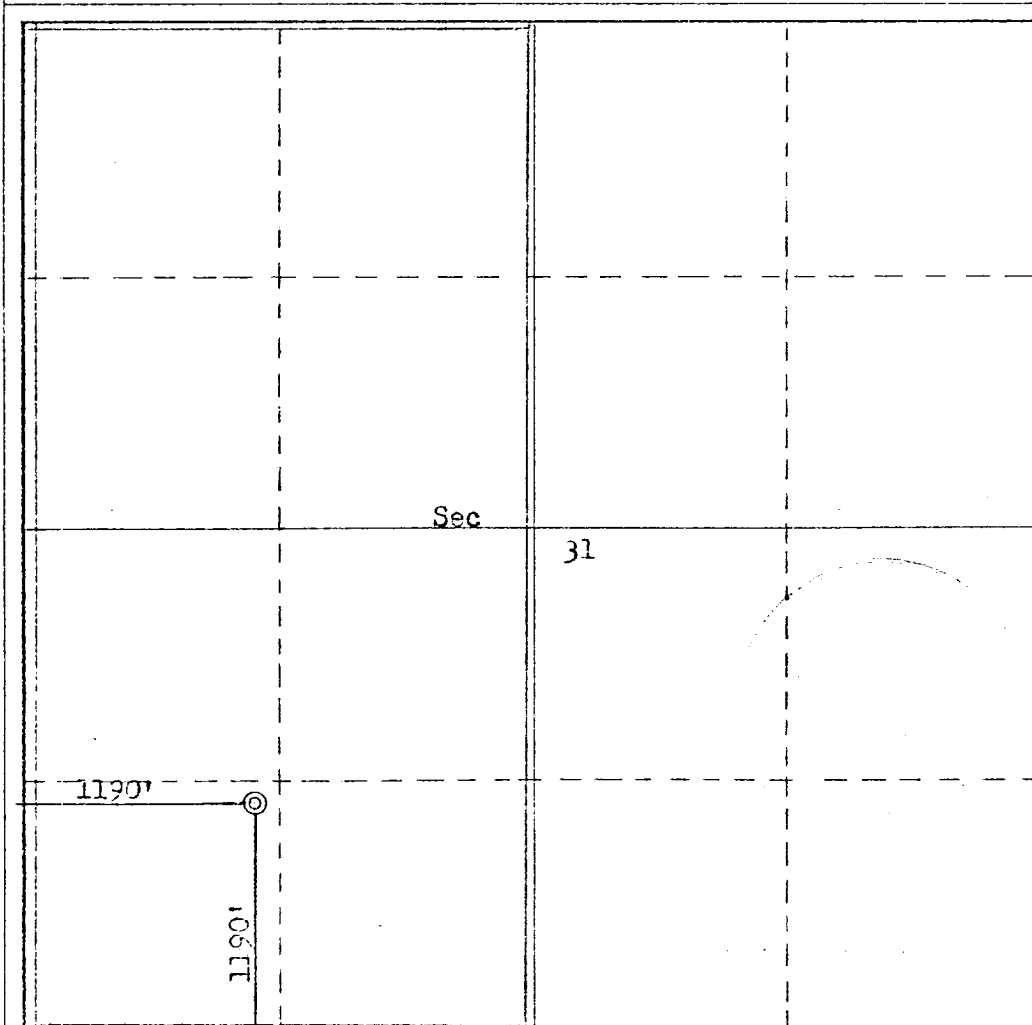
| | | | | | |
|--|--------------------------------------|------------------------|-----------------------------|---------------------------|---|
| Operator Southland Royalty Company | | | Lease Grenier | | Well No. 23 |
| Well Letter M | Section 31 | Township 31N | Range 11W | County San Juan | |
| Actual Postage Location of Well: | | | | | |
| 1190 | feet from the | South | line and | 1190 | feet from the |
| | | | | | West |
| Ground Level Elev. 5861 | Producing Formation Dakota | | Pool Basin Dakota | | Dedicated Acreage 320.375 Acres |

1. Outline the acreage dedicated to the subject well by colored pencil or hachure marks on the plat below.
2. If more than one lease is dedicated to the well, outline each and identify the ownership thereof (both as to working interest and royalty).
3. If more than one lease of different ownership is dedicated to the well, have the interests of all owners been consolidated by communitization, unitization, force-pooling, etc?

☐ Yes ☐ No If answer is "yes," type of consolidation _____

If answer is "no," list the owners and tract descriptions which have actually been consolidated. (Use reverse side of this form if necessary.) _____

No allowable will be assigned to the well until all interests have been consolidated (by communitization, unitization, forced-pooling, or otherwise) or until a non-standard unit, eliminating such interests, has been approved by the Commission.



CERTIFICATION

I hereby certify that the information contained herein is true and complete to the best of my knowledge and belief.

Name CC Person
Position District Engineer
Company Southland Royalty Company
Date May 1, 1978

I hereby certify that the well location shown on this plat was plotted from field notes of actual surveys made by me or under my supervision, and that the same is true and correct to the best of my knowledge and belief.

Date Survey May 1, 1978
Registered Professional Engineer
and of Land Surveyors
Frederick A. Kerr Jr.
Certificate No. 3950

0 310 650 990 1320 1650 1980 2310 2640 2970 3300 3630 3960 4290 4620 4950 5280 5610 5940 6270 6600



Southland Royalty Company

May 5, 1978

New Mexico Oil Conservation Commission
1000 Rio Brazos Road
Aztec, New Mexico 87410

Attention: Mr. Al Kendrick

Dear Sir:

All drilling and completion rigs will be equipped with 6" or larger double gate hydraulic blowout preventers and a hydraulic operated closing unit with steel lines.

The preventer is 3000# working pressure and 6000# test.

All crews will be thoroughly trained in the operation of this preventer. The preventer will be tested at the beginning of every tower change to insure proper operation.

Yours truly,

L. O. Van Ryan
District Production Manager

LOVR/dg