

DRILLING SCHEDULE - DAVIS #17

Location: 1450' FSL & 790' FEL, Section 3, T31N, R12W, San Juan County, New Mexico

Field: Aztec Pictured Cliffs

Elevation: 6292' GL

Geology:

Formation Tops:

Ojo Alamo	1583'	Pictured Cliffs	2750'
Fruitland	2328'	Total Depth	2930'

Logging Program: IES and GR-Density at TD.

Coring Program: None

Natural Gauges: None

Drilling:

Contractor: Aztec Well Service Rig #50

Tool Pusher: Bob Young

SRC Answering Service: 325-1841

Drilling Foreman: Max Larson

SRC Dispatch Number: 325-7391

Mud Program: Fresh water mud from surface to TD.

Materials:

Casing Program:	Hole Size	Depth	Casing Size	Wt. & Grade	
	12-1/4"	120'	8-5/8"	24#	K-55
	6-3/4"	2930'	2-7/8"	6.5#	J-55

Float Equipment:

8-5/8" Surface Casing: B & W cement guide shoe.

2-7/8" Production Casing: Notched Collar guide shoe. Howco 2-7/8" latch down baffle (pr. ref. 60). Two 3-1/16" rubber balls & 1 Howco 2-7/8" Omega plug (pr. ref. 59). Use 3-1/4" plug container head. 6 B&W stabilizers on bottom 6 joints.

Wellhead Equipment:

8-5/8" X 2-7/8" EUE screwed head.

Cementing:

8-5/8" Surface Casing: 85 sacks Class "B" with 1/4# gel flake per sack and 3% CaCl₂ (100.3 cu.ft. - 100% excess to circulate to surface). WOC 12 hours. Test to 600 psi prior to drilling out.

2-7/8" Production Casing: 225 sacks Class "B" 50/50 Poz with 6% gel (Mix at 7.87 gals water per sack), followed by 50 sacks Class "B" with 2% CaCl₂. (410 cu.ft. - 50% excess to cover Ojo Alamo). Spot 50 gals 7-1/2% MSA on top of plugs. Run temperature survey after 12 hours.

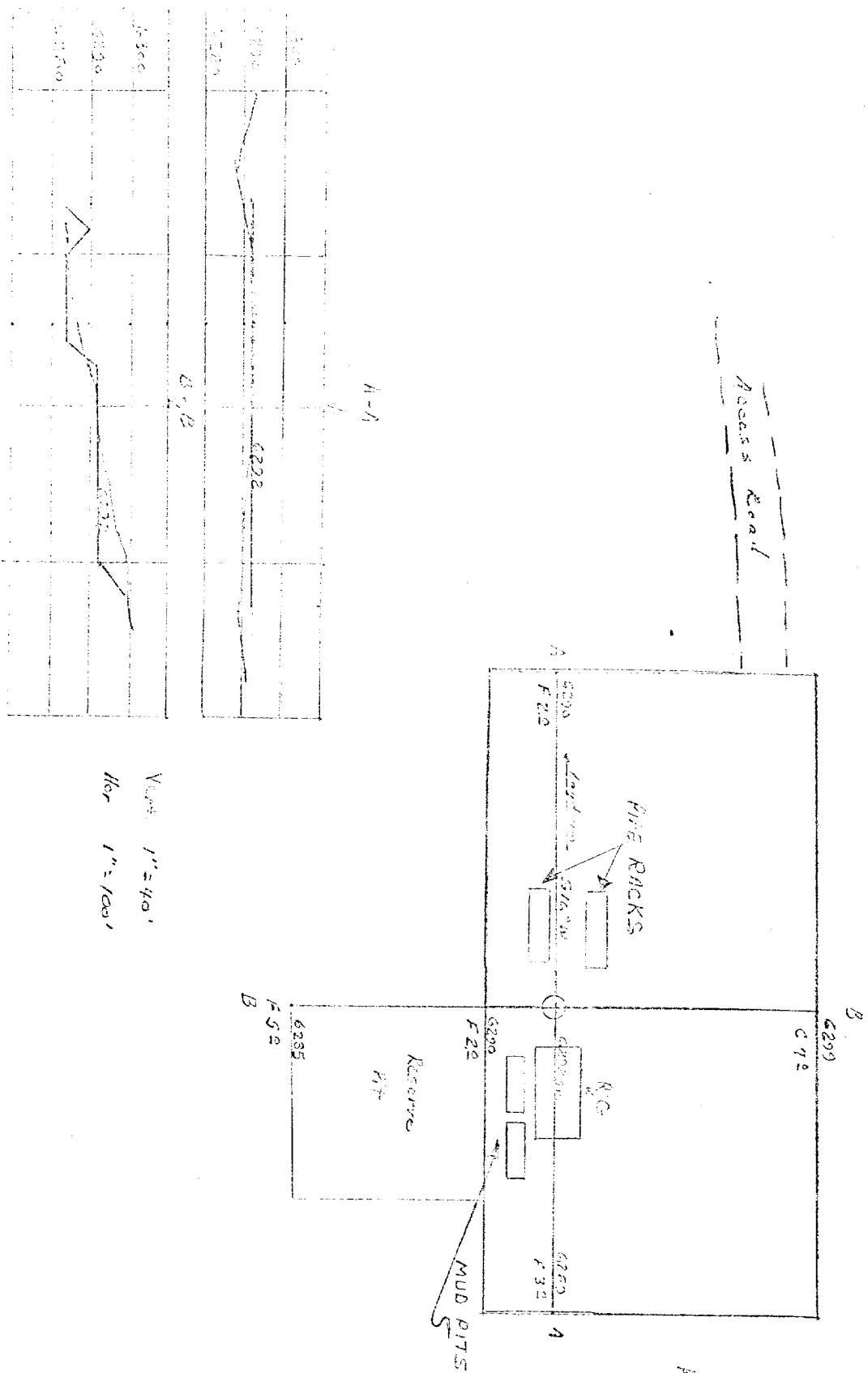
CCP

Date: 5-2-78

L. O. Van Ryan

District Production Manager

Location Profile for
SOUTHERN ROYALTY COMPANY #17 Wells
1450' to 1790' FEL See J-131N-RTEN
San Juan County, New Mexico



KERR LAND SURV
March 30, 1978
[Signature]



Southland Royalty Company

May 2, 1978

United States Geological Survey
P. O. Box 959
Farmington, New Mexico 87401

Attention: Mr. P. T. McGrath

Dear Sir:

Enclosed please find a map showing existing roads and planned access roads to Southland Royalty Company's Davis #17 well. The locations of tank batteries and flow lines will be on location with well. A burn pit will be provided for disposal of trash. Cuttings, drilling fluid and produced fluids will be put into the reserve pit and properly disposed of depending on amount and type of fluids.

Contractor will furnish restroom facilities on location.

There will be no air strips or camps.

Also, enclosed is a location layout showing approximate location of rig, pits and pipe racks and cut required to build this location.

Water supply will be the Farmers Ditch. All water will be transported by truck and stored on location.

The location will be restored according to Bureau of Land Management standards. This work will begin when all related construction is finished.

Mr. Max Larson will be Southland Royalty Company's field representative supervising these operations.

Yours truly,

Curtis C. Parsons
District Engineer

CCP/dg



Southland Royalty Company

May 1, 1978

United States Geological Survey
P. O. Box 959
Farmington, New Mexico

Attention: Mr. P. T. McGrath

Dear Sir:

All drilling and completion rigs will be equipped with 6" or larger double gate hydraulic blowout preventers and a hydraulic operated closing unit with steel lines.

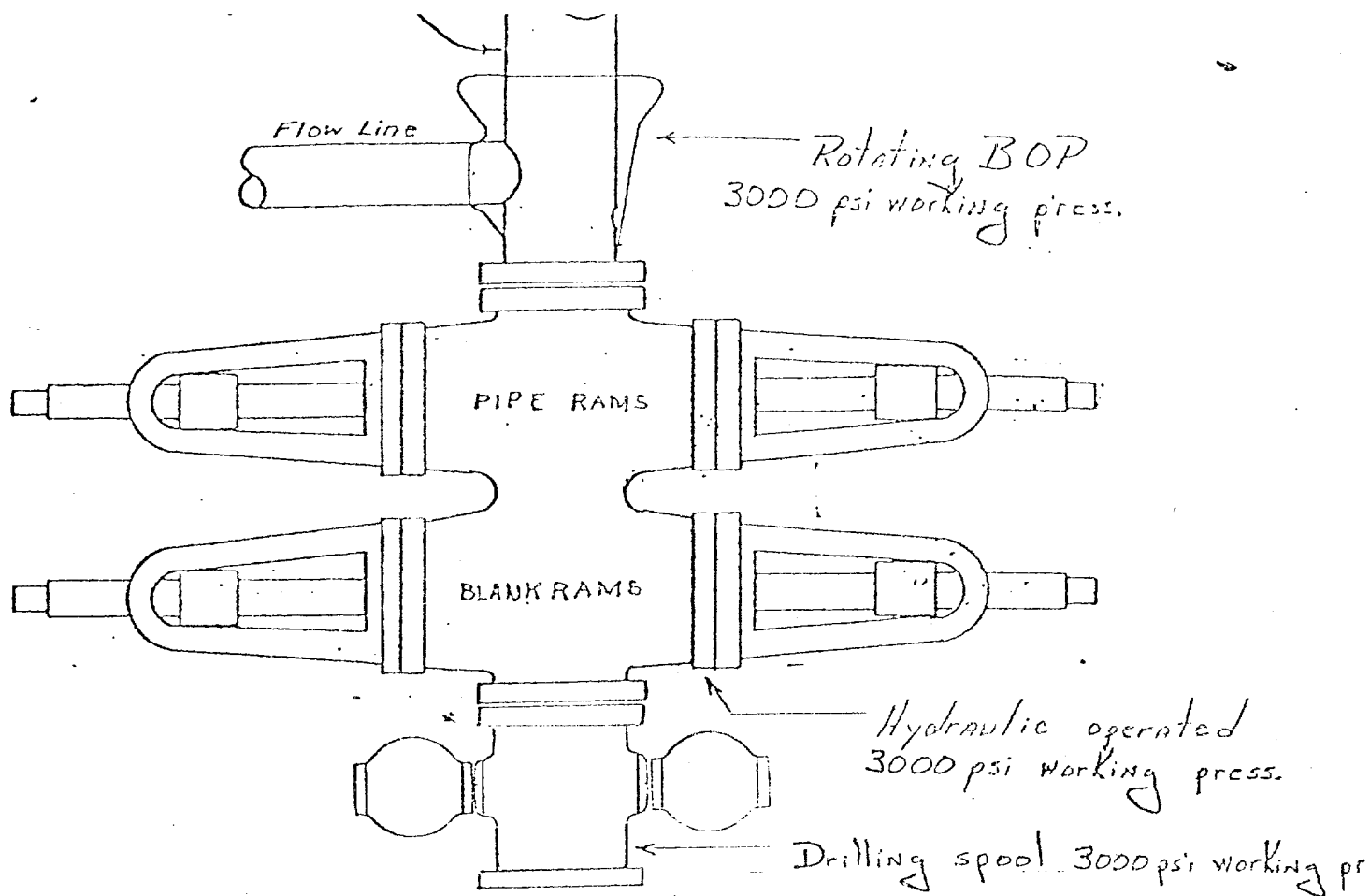
The preventer is 3000# working pressure and 6000# test.

All crews will be thoroughly trained in the operation of this preventer. The preventer will be tested frequently enough to insure proper operation.

Yours truly,

Curtis C. Parsons
District Engineer

CCP/dg



Preventers and spools are to have
through bore of 6" - 3000# PSI or larger.



Southland Royalty Company

United States Geological Survey
P. O. Box 959
Farmington, New Mexico 87401

Attention: Mr. P. T. McGrath

Dear Sir:

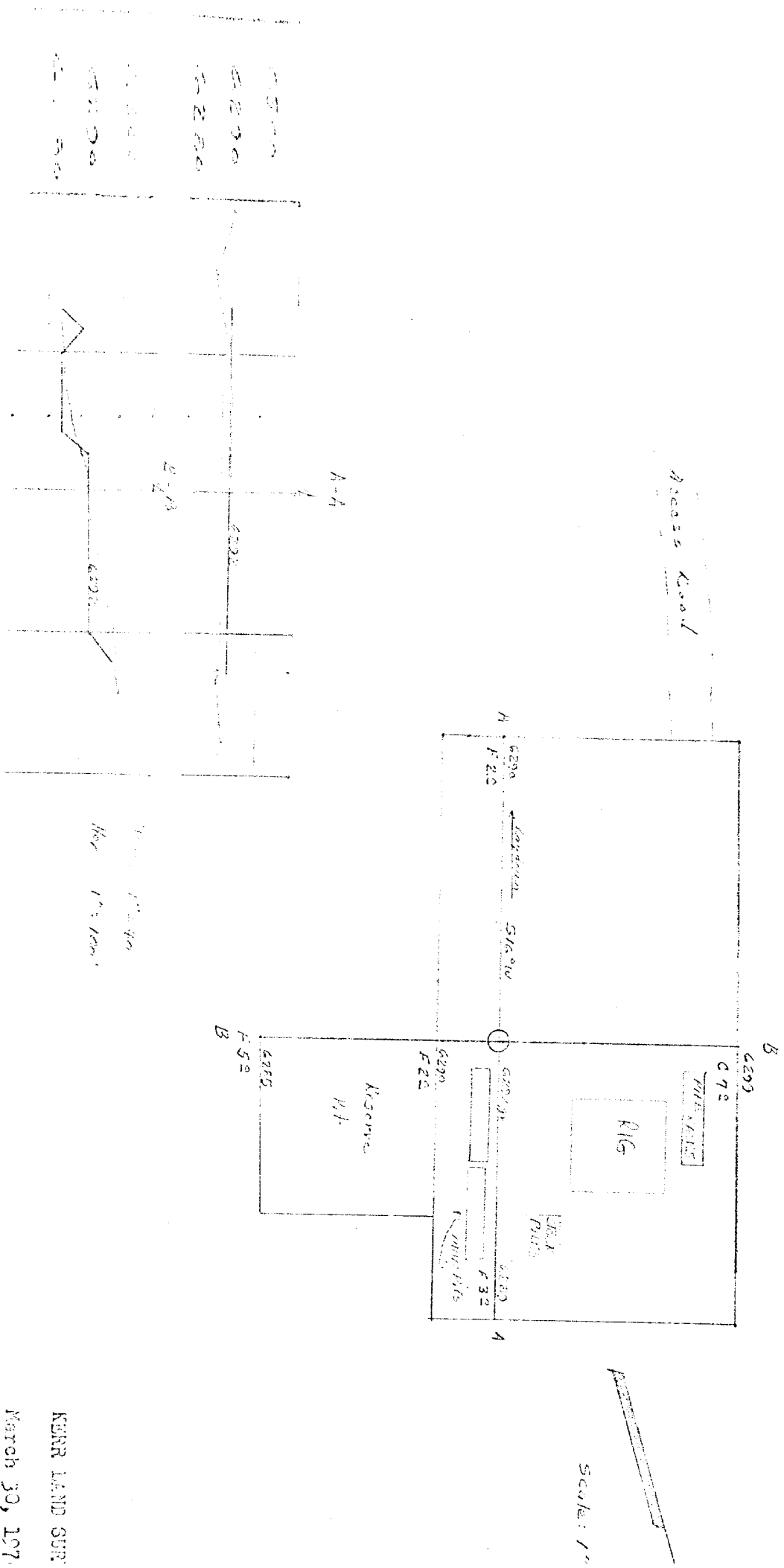
I hereby certify that I, or persons under my direct supervision, have inspected the proposed drillsite and access route; that I am familiar with the conditions which presently exist; that the statements made in this plan are, to the best of my knowledge, true and correct; and, that the work associated with the operations proposed herein be performed by Southland Royalty Company and its contractors and subcontractors in conformity with this plan and the terms and conditions under which it is approved.

Date: May 2, 1978

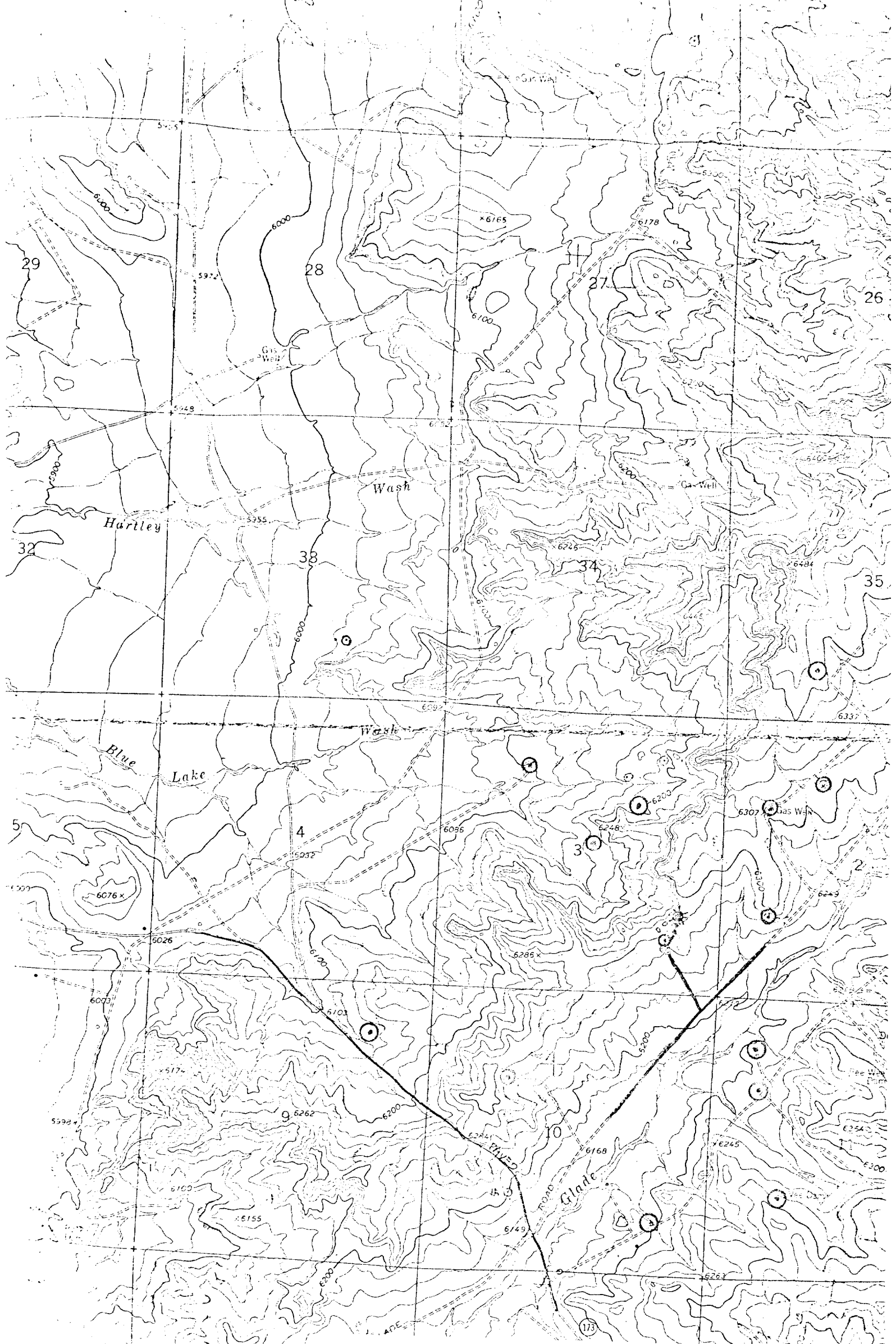
Name: CC Parson

Title: District Engineer

Location Profile for
 SOUTHLAND ROYALTY COMPANY #17 DAVIS
 1450' E 1/4 790' E 1/4 Sec 3-T32N-R12W
 San Juan County, New Mexico



KERR LAND SUR
 March 30, 1971
[Signature]



PROPOSED ROADS ---
EXISTING ROADS ———
PROPOSED LOCATION *
EXISTING LOCATIONS o

Vicinity Map for
SOUTHLAND ROYALTY CO. #17 Davis
1450' FOL 790' FEL Sec 3-T31N-R12W
San Juan County, New Mexico

6

14