

UNITED STATES
DEPARTMENT OF THE INTERIOR
GEOLOGICAL SURVEY

APPLICATION FOR PERMIT TO DRILL, DEEPEN, OR PLUG BACK

1a. TYPE OF WORK

DRILL ☒DEEPEN ☐PLUG BACK ☐

b. TYPE OF WELL

OIL
WELL ☒GAS
WELL ☐

OTHER

SINGLE
ZONE ☒MULTIPLE
ZONE ☐

2. NAME OF OPERATOR

Energetics, Inc.

3. ADDRESS OF OPERATOR

333 W. Hampden Ave., Ste. 1010, Englewood, Colo. 80110

4. LOCATION OF WELL (Report location clearly and in accordance with any State requirements.)*

At surface

680' FSL & 1670' FEL

At proposed prod. zone

SAME

14. DISTANCE IN MILES AND DIRECTION FROM NEAREST TOWN OR POST OFFICE*

15. DISTANCE FROM PROPOSED*

LOCATION TO NEAREST
PROPERTY OR LEASE LINE, FT.
(Also to nearest drlg. unit line, if any)18. DISTANCE FROM PROPOSED LOCATION*
TO NEAREST WELL, DRILLING, COMPLETED,
OR APPLIED FOR, ON THIS LEASE, FT.

21. ELEVATIONS (Show whether DF, RT, GR, etc.)

5605" GR

23.

PROPOSED CASING AND CEMENTING PROGRAM

SIZE OF HOLE	SIZE OF CASING	WEIGHT PER FOOT	SETTING DEPTH	QUANTITY OF CEMENT
12 1/2	8 5/8	32	100	100 sk.
7 7/8	5 1/2	15.5	2400	330 sk.
4 3/4	Open Hole		2400-2600	

(See Attachments)

30-045-23066
5. LEASE DESIGNATION AND SERIAL NO.

M00-C-1420-1720

6. IF INDIAN, ALLOTTEE OR TRIBE NAME

Mountain Ute

7. UNIT AGREEMENT NAME

8. FARM OR LEASE NAME

Ute 14

9. WELL NO.

34

10. FIELD AND POOL, OR WILDCAT

Verde Gallup

11. SEC., T., R., M., OR BLK.
AND SURVEY OR AREA

S.14-T31N-R15W

12. COUNTY OR PARISH

San Juan

13. STATE

NM

16. NO. OF ACRES IN LEASE

640

17. NO. OF ACRES ASSIGNED
TO THIS WELL

40

20. ROTARY OR CABLE TOOLS

Rotary & Cable Tools

22. APPROX. DATE WORK WILL START*

July 1, 1978

IN ABOVE SPACE DESCRIBE PROPOSED PROGRAM: If proposal is to deepen or plug back, give data on present productive zone and proposed new productive zone. If proposal is to drill or deepen directionally, give pertinent data on subsurface locations and measured and true vertical depths. Give blowout preventer program, if any.

24.

SIGNED

John Alexander

TITLE AGENT

DATE 5-22-78

(This space for Federal or State office use)

PERMIT NO.

APPROVAL DATE

APPROVED BY

TITLE

CONDITIONS OF APPROVAL, IF ANY:

RECEIVED

MAY 24 1978

*See Instructions On Reverse Side

U. S. GEOLOGICAL SURVEY
DURANGO, COLO.

NEW MEXICO OIL CONSERVATION COMMISSION
WELL LOCATION AND ACREAGE DEDICATION PLAT

Form C-102
Supersedes C-128
Effective 1-1-65

All distances must be from the outer boundaries of the Section.

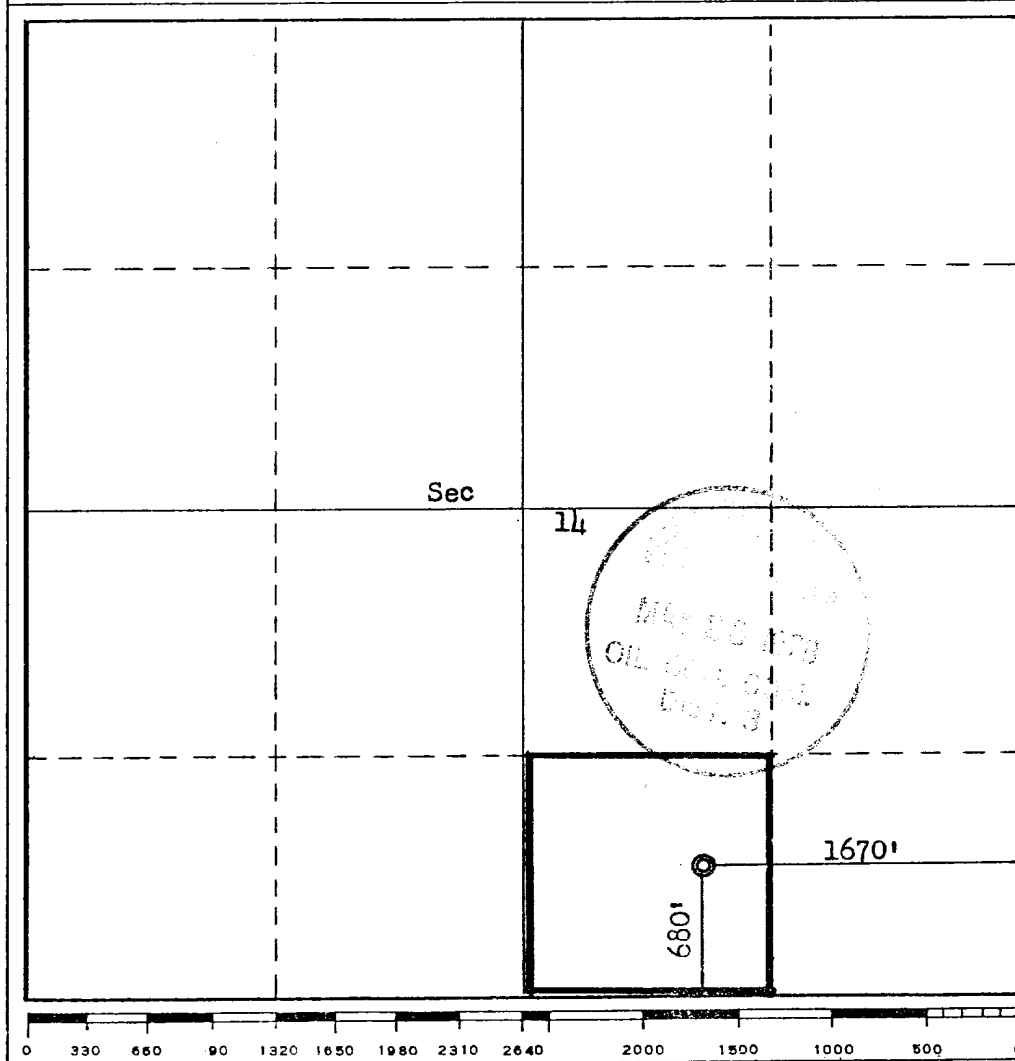
Operator ENERGETICS INCORPORATED			Lease UTE 14		Well No. 34
Unit Letter C	Section 14	Township 31N	Range 15W	County San Juan	
Actual Footage Location of Well: 680 feet from the South line and 1670 feet from the East line					
Ground Level Elev. 5605	Producing Formation Verde Gallup		Pool Verde Gallup		Dedicated Acreage 40 Acres

1. Outline the acreage dedicated to the subject well by colored pencil or hachure marks on the plat below.
2. If more than one lease is dedicated to the well, outline each and identify the ownership thereof (both as to working interest and royalty).
3. If more than one lease of different ownership is dedicated to the well, have the interests of all owners been consolidated by communitization, unitization, force-pooling, etc?

☐ Yes ☐ No If answer is "yes," type of consolidation _____

If answer is "no," list the owners and tract descriptions which have actually been consolidated. (Use reverse side of this form if necessary.) _____

No allowable will be assigned to the well until all interests have been consolidated (by communitization, unitization, forced-pooling, or otherwise) or until a non-standard unit, eliminating such interests, has been approved by the Commission.



CERTIFICATION

I hereby certify that the information contained herein is true and complete to the best of my knowledge and belief.

John Alexander
Name

John Alexander

Position

Agent

Company

Energetics, Inc.

Date

5-22-78

I hereby certify that the well location shown on this plat was plotted from field notes of actual surveys made by me or under my supervision, and that the same is true and correct to the best of my knowledge and belief.

Date Surveyed

May 1978

Registered Professional Engineer and/or Land Surveyor

Fred B. Kerr Jr.
Fred B. Kerr Jr.

Certificate No. MET

3950 B. KERR, JR.

Energetics, Incorporated
FORMATION INFORMATION AND DRILLING PRACTICES

WELL:

Ute 14 No. 34

LOCATION:

680' FSL & 1670' FEL
Sec. 14- T31N-R15W
San Juan Co., NM

LEASE NO.:

Moo-C-1420-1720

1) Surface formation.

Menefee

2) Estimated tops of important geologic markers.

Point Lookout	648
Mancos	1038
Gallup	2400

3) Hydro carbon, water or mineral bearing formation.

2400' Oil

4) Proposed casing program.

0-100' 8 5/8, 32#, new casing. Cement with 100 sk. Class B + 2% CaCl₂.

0-2400' 5½, 15.5#, new casing. Cement with 230 sk. Halliburton Light with 6¼ lb. Gilsonite/sk. followed by 100 sk. Class B + 2% CaCl₂ with 6¼ lb. Gilsonite/sk.

2400-2600 Open hole (drill with Cable tool)

5) Specifications for pressure control equipment.

The attached schematic shows the type of blow out preventer to be used while drilling. The unit will be tested to 200 psi as soon as possible after its installation on the surface pipe. Testing will be done with the rig pump. This is a manual type preventer, and its operation will be manually checked when practical.

6) Drilling fluids.

Depth	Type	Viscosity	Weight	Fluid loss
0-100	Gel-Lime	35-55	8.9-9.2	N/C
100-2400	Gel-Chem	30-40	8.6-9.5	10
2400-2600	Water			

7) Auxiliary equipment.

a. bit float

b. full opening valve for stabbing in drill pipe when the kelly is not in use

8) Logging - Coring - Drill Stem Testing.

Logging: Induction Electric Log, Formation Compensated Density, Gamma Ray, Caliper

Coring: None

Drill Stem Testing: None

9) Abnormal temperatures, pressures, or hazardous conditions.

None expected.

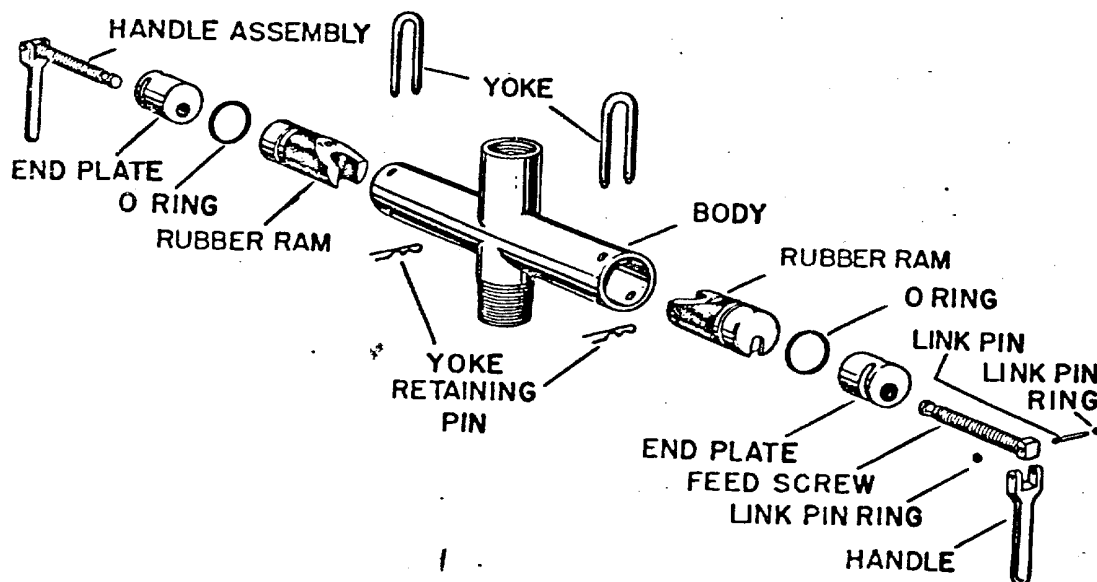
10) Starting Date.

Anticipated starting date is July 1, 1978. Approximately 15 days will be needed to build roads and location and drill the well to total depth. If commercial, completion will commence immediately and require approximately 7 days to complete.

G TUBING BLOWOUT PREVENTERS

G BLOWOUT PREVENTER RAMS

PREVENTER SIZE	2-3/8"	2-7/8"	3-1/2"
RAM I.D. INCHES	Part No.	Part No.	Part No.
Blank.....	28262	28263	28264
9/16".....	59383	45019	59388
5/8".....	44948	44969	59393
3/4".....	59391	41502	59410
7/8".....	59392	54571	59389
1".....	59384	59386	45903
1.050".....	44949	41424	45056
1-1/8".....	28354	28336	28365
1-1/4".....	28355	28331	28366
1.315".....	45055	44109	44057
1-3/8".....	44730	59387	44964
1-1/2".....	28356	28337	28367
1-5/8".....	59385	46780	59390
1.660".....	45462	43629	44963
1-3/4".....	28357	28346	28368
1.900".....	45463	43630	45609
2.063".....	59394



ATTACHMENT TO POINT 5
API SERIES 6" 600

Energetics, Incorporated
Surface Development Plan

WELL:

Ute 14 #34

LOCATION:

680' FSL & 1670' FEL
S.14-T31N-R15W
San Juan Co., NM

LEASE NO.:

Moo-C-1420-1720

1) Existing roads. (Shown in green.)

The attached topographic map shows all existing roads within one mile of the proposed location. Access will be made to a county road 1 ½ mile south of the location.

All existing roads are in good condition and will not have to be upgraded to handle normal drilling activity traffic.

2) Planned access road. (Shown in red.)

The planned access road will be approximately 100' long and 20' wide. Maximum grade will be 5%. No turnouts or culverts will be required. Water bars will be used to aid drainage and prevent erosion. No surfacing material will be required. No gates, cattle guards, or fences will be crossed. No cuts or fills should be required.

3) Location of existing wells.

All wells (water, abandoned, disposal, and drilling) are shown and so labeled on the attached section layout.

4) Location of tank batteries, production facilities and production, gathering and service lines.

All production facilities are to be contained within the proposed location. Energetics does not own or control any such facilities in the area.

5) Location and type of water supply.

Water for drilling will be trucked from the San Juan River located 15 miles southeast of location. This water is not on federal land.

6) Source of construction material.

Any construction material required for road or location will be excess material accumulated during building of such sites.

7) Methods of handling waste disposal.

(Refer to attached well site layout.)
All burnable material will be burned in the trash pit when conditions permit. All nonburnable material (drilling fluids, cuttings, chemicals, etc.) will be held in the reserve pit and buried when dry. Any oil produced while drilling will be trucked from the location prior to leaving the pit to dry. Pits will be fenced during dryout time, the completely back filled with dirt prior to preparing the location for production or abandonment.

9) Ancillary facilities.

No ancillary facilities are planned.

9) Well site lay out.

The attached lay out shows the drilling rig with all facilities. Cut and fill required is also indicated.

10) Plans for restoration of surface.

Restoration of well site and access road will begin within 90 days of well completion, weather permitting.

Should the well be abandoned, the drilling site will be reshaped to its approximate former contour. The access road will be plowed and leveled. Both site and road will have top soil replaced and will be reseeded when germination can occur.

Should the well be commercial, that portion of the location, not needed for operation, will be repaired as above. The portion needed for daily production operations, and the access road, will be maintained in good repair.

In either case, clean up of the site will include burning any safely burnable material, filling of all pits, carrying away of all nonburnable material and chemicals that can not be buried. Any oil that has accumulated on the pits will be trucked away.

11) Other information.

General topography of the area may be seen on the attached map.

The drilling site is flat and is covered with sage brush and other native grasses. There are no creeks, rivers or ponds in the area. The soil is sandy loam. Small animals and sheep inhabit the area. There is an old pad already built at this location.

The surface is administered by The Bureau of Indian Affairs, and belongs to the Ute Mountain Tribe.

There are no occupied dwellings in the area.

There are no archaeological or cultural sites visible on the location. The archaeologist report is forthcoming.

12)

John Alexander
3E Company, Inc.
P.O. Box 190
Farmington, NM 87401
Phone: 505-327-4020

- 13) I hereby certify that I or persons under my direct supervision, have inspected the proposed drill site and access route; that I am familiar with the conditions which presently exist; that the statements made in the plan are to the best of my knowledge, true and correct; and, that the work associated with the operations proposed herein will be performed by Energetics, Incorporated and its contractors and sub-contractors in conformity with this plan and the terms and conditions under which it is approved.

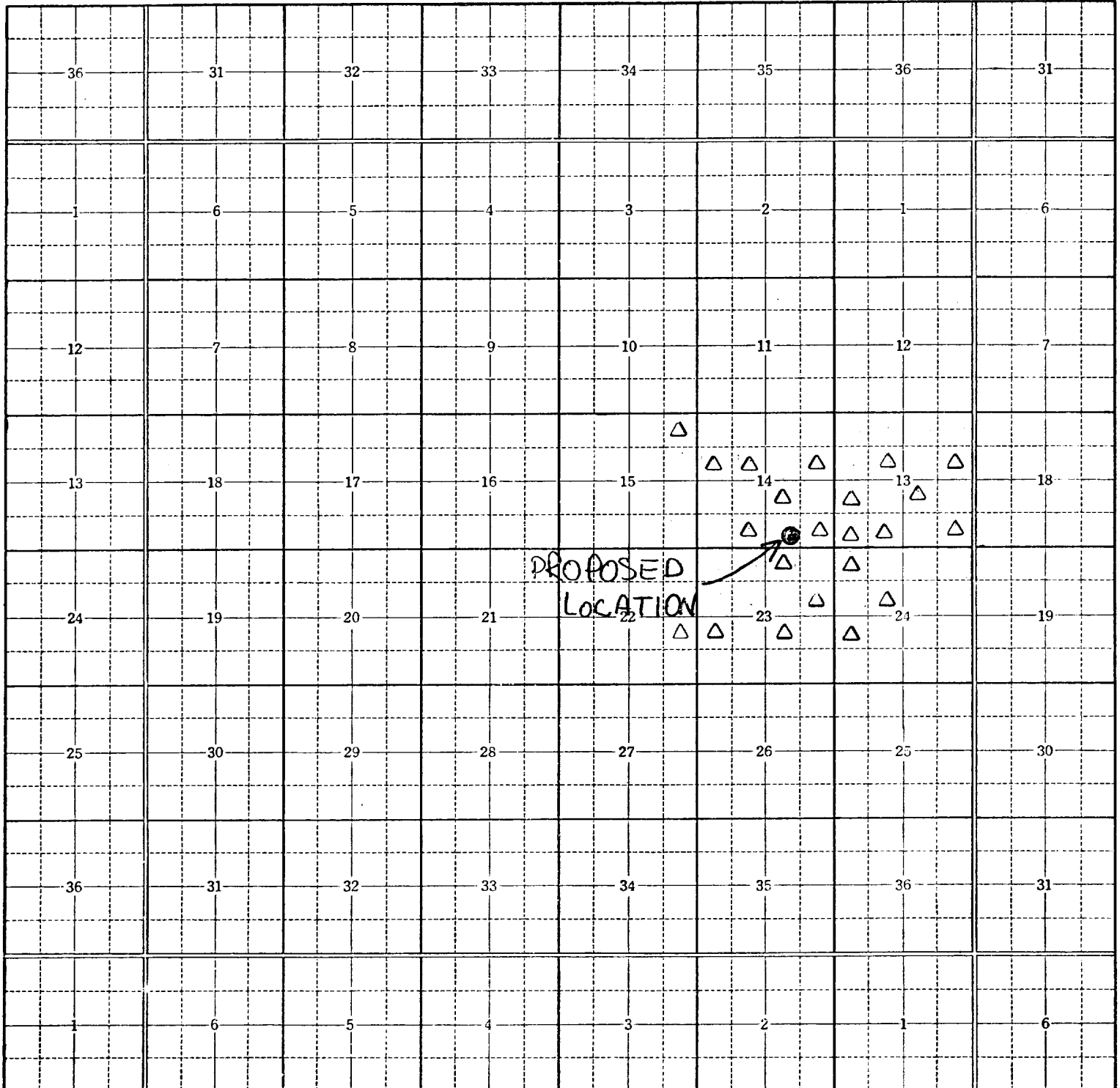
5-22-78

John Alexander
John Alexander

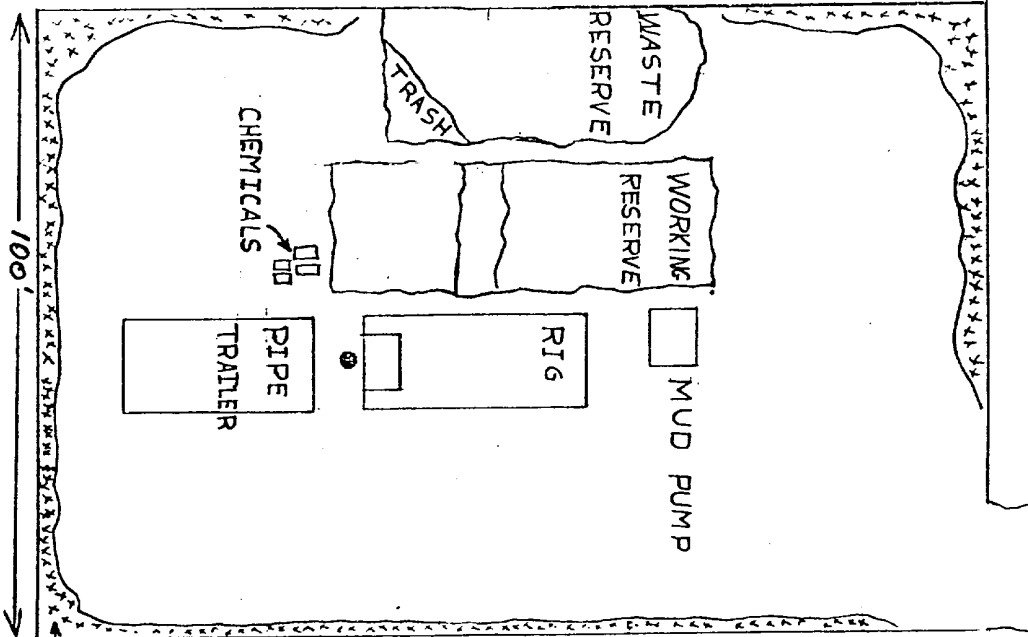
Δ = Plug & abandoned

Township 31 N, Range 15 W, County San Juan, State N.M.

Island Township Plat

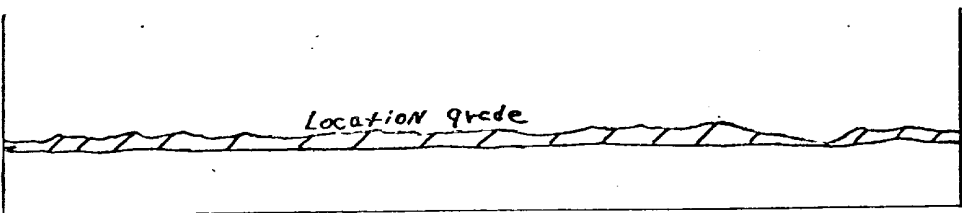


ENERGETICS INC.
 UTE 14 # 34
Offset wells



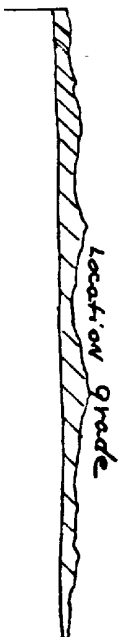
PLAN VIEW 1"=30'
ALL PITS-EARTHEN

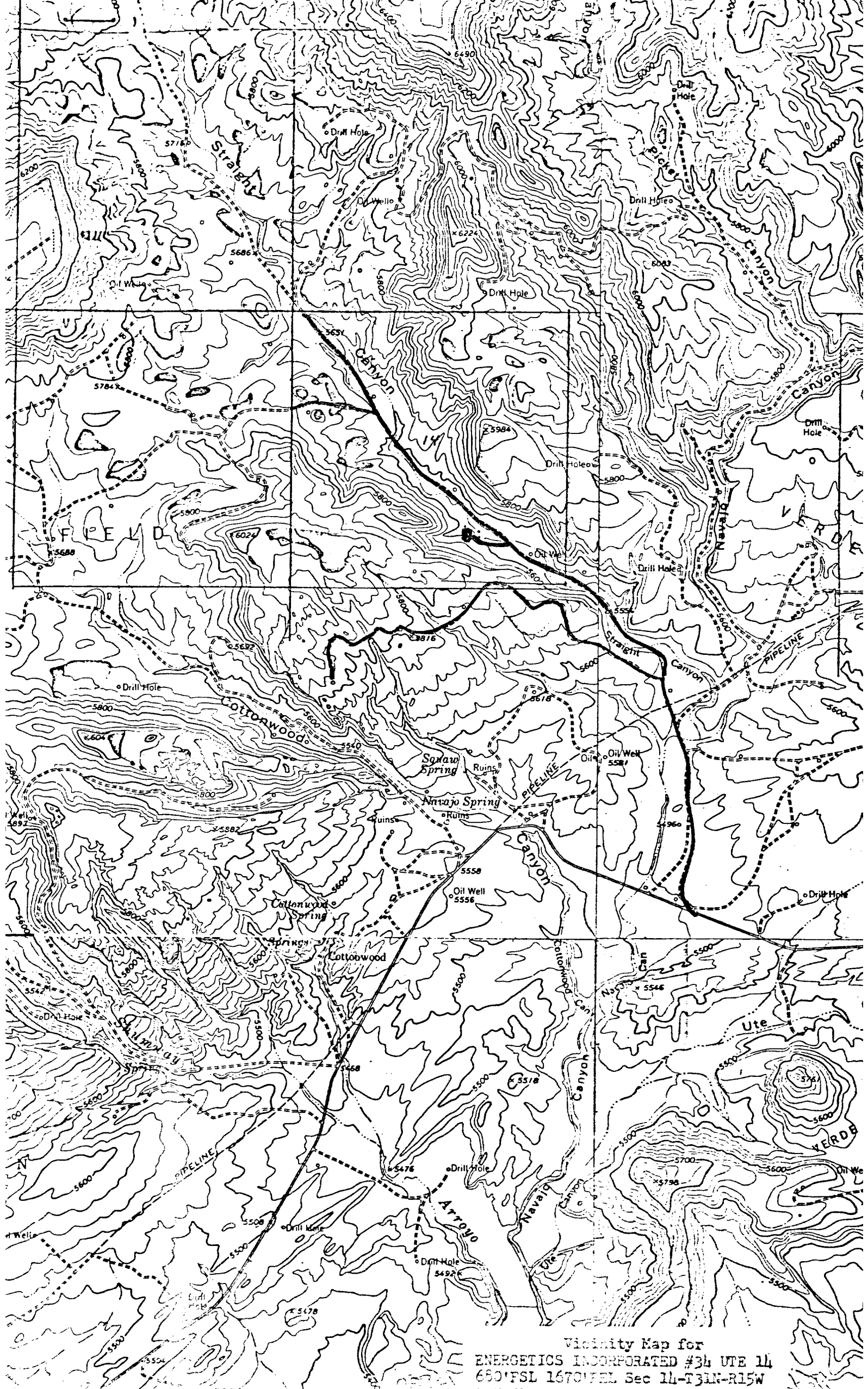
SOIL MATERIAL STOCKPILE



WELL SITE LAYOUT
ENERGETICS INC.

CUT & FILL (SIDE) - 6" TOP SOIL 0





Vicinity Map for
ENERGETICS INCORPORATED #34 UTE 14
680'FSL 1670'FSL Sec 14-T34N-R15W