

N	OF COPIES RECEIVED	5
DISTRIBUTION		
SANTA FE	1	
FILE	2	
U.S.G.S.	1	
LAND OFFICE		
OPERATOR	1	

NEW MEXICO OIL CONSERVATION COMMISSION

30-095-23101

Form C-101
Revised 1-1-65

5A. Indicate Type of Lease	
STATE <input type="checkbox"/>	FEE <input checked="" type="checkbox"/>
5. State Oil & Gas Lease No.	

APPLICATION FOR PERMIT TO DRILL, DEEPEN, OR PLUG BACK

1a. Type of Work				7. Unit Agreement Name	
b. Type of Well OIL WELL <input type="checkbox"/> GAS WELL <input checked="" type="checkbox"/> OTHER <input type="checkbox"/>				8. Farm or Lease Name	
2. Name of Operator Great Western Drilling Co.				9. Well No. 8	
3. Address of Operator 125 Petroleum Plaza Farmington, New Mexico 87401				10. Field and Pool or Wildcat Undesignated ext	
4. Location of Well UNIT LETTER L LOCATED 1500 FEET FROM THE South LINE AND 1150 FEET FROM THE West LINE OF SEC. 8 TWP. 32N RGE. 11W NMPM				12. County San Juan	
19. Proposed Depth 3600				19A. Formation Pictured Cliffs	
20. Rotary or C.T. Rotary				21. Elevations (Show whether DF, RT, etc.) 6606'	
21A. Kind & Status Plug. Bond Blanket on file				21B. Drilling Contractor Young Drilling Co.	
22. Approx. Date Work will start Rotary					

PROPOSED CASING AND CEMENT PROGRAM

SIZE OF HOLE	SIZE OF CASING	WEIGHT PER FOOT	SETTING DEPTH	SACKS OF CEMENT	EST. TOP
11"	7"	20	200' + or -	160	Circulate
6 1/2"	2 7/8"	8.7	3600	576	Circulate

Drill and set surface pipe.
Install 6" 900 series double gate B. O. P. test B. O. P. and pipe to 1500 lbs.
Drill 6 1/2" hole with mud to T. D.
Run 2 7/8 8rd. J-55 E.U.E. tubing for production string, circulate cement on production string.
Determine by logs what to perforate and frac in Pictured Cliffs.

IN ABOVE SPACE DESCRIBE PROPOSED PROGRAM: IF PROPOSAL IS TO DEEPEN OR PLUG BACK, GIVE DATA ON PRESENT PRODUCTIVE ZONE AND PROPOSED NEW PRODUCTIVE ZONE. GIVE BLOWOUT PREVENTER PROGRAM, IF ANY.

I hereby certify that the information above is true and complete to the best of my knowledge and belief.

Original signed by: D. E. BAXTER Title Superintendent Date 6-7-78

(This space for State Use)

APPROVED BY: Frank T. Chang TITLE DEPUTY OIL & GAS INSPECTOR, DIST. #3 DATE JUN 8 1978

CONDITIONS OF APPROVAL, IF ANY:

NEW MEXICO OIL CONSERVATION COMMISSION
WELL LOCATION AND ACREAGE DEDICATION PLAT

Form C-102
Supersedes C-128
Effective 1-1-65

All distances must be from the outer boundaries of the Section.

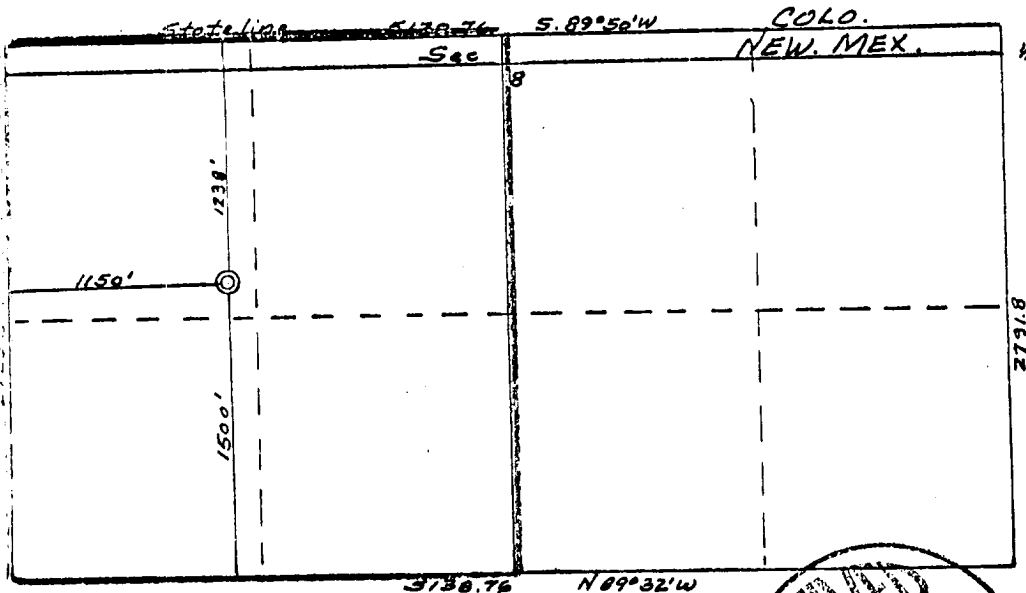
Operator Great Western Drilling Company			Lease J.E. Decker		Well No. 8
Unit Letter L	Section 8	Township 32N	Range 11W	County San Juan	
Actual Footage Location of Well: 1500 feet from the South line and 1150 feet from the West line					
Ground Level Elev. 6606	Producing Formation Pictured Cliffs		Pool Blanco Pictured Cliffs Undesignated	Dedicated Acreage 168.80 Acres	

1. Outline the acreage dedicated to the subject well by colored pencil or hachure marks on the plat below.
2. If more than one lease is dedicated to the well, outline each and identify the ownership thereof (both as to working interest and royalty).
3. If more than one lease of different ownership is dedicated to the well, have the interests of all owners been consolidated by communitization, unitization, force-pooling, etc?

☐ Yes ☐ No If answer is "yes," type of consolidation _____

If answer is "no," list the owners and tract descriptions which have actually been consolidated. (Use reverse side of this form if necessary.) _____

No allowable will be assigned to the well until all interests have been consolidated (by communitization, unitization, forced-pooling, or otherwise) or until a non-standard unit, eliminating such interests, has been approved by the Commission.



SCALE: 1"=1000'

CERTIFICATION

I hereby certify that the information contained herein is true and complete to the best of my knowledge and belief.

Name **D. L. Bayler**
Position **Dist. Supervisor**
Company **Great Western Drilling Co.**
Date **6-7-78**

I hereby certify that the well location shown on this plat was plotted from field notes of actual surveys made by me or under my supervision, and that the same is true and correct to the best of my knowledge and belief.

Date Surveyed **March 13, 1978**
Registered Professional Engineer and Land Surveyor
Fred B. Kerr Jr.
Certificate No. _____

