

UNITED STATES  
DEPARTMENT OF THE INTERIOR  
GEOLOGICAL SURVEY

## APPLICATION FOR PERMIT TO DRILL, DEEPEN, OR PLUG BACK

## 1a. TYPE OF WORK

DRILL ☒DEEPEN ☐PLUG BACK ☐

## b. TYPE OF WELL

OIL  
WELL ☐GAS  
WELL ☒

OTHER

SINGLE  
ZONE ☒MULTIPLE  
ZONE ☐

## 2. NAME OF OPERATOR

Southland Royalty Company

## 3. ADDRESS OF OPERATOR

P. O. Drawer 570, Farmington, New Mexico

## 4. LOCATION OF WELL (Report location clearly and in accordance with any State requirements.\*)

At surface

2380' FSL &amp; 1770' FEL

At proposed prod. zone

## 14. DISTANCE IN MILES AND DIRECTION FROM NEAREST TOWN OR POST OFFICE\*

44 miles Northeast of Aztec, New Mexico

## 15. DISTANCE FROM PROPOSED\*

LOCATION TO NEAREST  
PROPERTY OR LEASE LINE, FT.  
(Also to nearest drlg. unit line, if any)18. DISTANCE FROM PROPOSED LOCATION\*  
TO NEAREST WELL, DRILLING, COMPLETED,  
OR APPLIED FOR, ON THIS LEASE, FT.

## 16. NO. OF ACRES IN LEASE

17. NO. OF ACRES ASSIGNED  
TO THIS WELL

299.89

## 19. PROPOSED DEPTH

6595'

## 20. ROTARY OR CABLE TOOLS

Rotary

## 21. ELEVATIONS (Show whether DF, RT, GR, etc.)

7050' GR

## 22. APPROX. DATE WORK WILL START\*

July 01, 1978

## 23.

## PROPOSED CASING AND CEMENTING PROGRAM

SIZE OF HOLE	SIZE OF CASING	WEIGHT PER FOOT	SETTING DEPTH	QUANTITY OF CEMENT
12-1/4"	9-5/8"	36#	300'	189 cu. ft.
8-3/4"	7"	20#	4210'	363 cu. ft.
6-1/4"	4-1/2"	10.50#	4060'-6595'	442 cu. ft.
	2-3/8"	4.7#	6550'	

Surface formation is San Jose.

Top of Ojo Alamo is at 2620'.

Top of Pictured Cliffs is at 3860'.

Fresh water mud will be used to drill from surface to intermediate casing point.

An air system will be used to drill from intermediate depth to total depth.

It is anticipated that an IES and a GR-Density log be run at intermediate total depth.

It is anticipated that a GR-Induction and a GR-Density log be run at total depth.

No abnormal pressures or poisonous gases are anticipated in this well.

It is expected that this well be drilled before August 15, 1978. This depends on  
time required for approvals, rig availability and the weather.

Gas is dedicated.

IN ABOVE SPACE DESCRIBE PROPOSED PROGRAM: If proposal is to deepen or plug back, give data on present productive zone and proposed new productive zone. If proposal is to drill or deepen directionally, give pertinent data on subsurface locations and measured and true vertical depths. Give blowout preventer program, if any.

## 24.

SIGNED

*CCT*

TITLE District Engineer

DATE June 19, 1978

(This space for Federal or State office use)

PERMIT NO.

APPROVAL DATE

APPROVED BY

TITLE

DATE

CONDITIONS OF APPROVAL, IF ANY:

*ok Frank*

\*See Instructions On Reverse Side

NWU - R-3817

NEW MEXICO OIL CONSERVATION COMMISSION  
WELL LOCATION AND ACREAGE DEDICATION PLAT

Form C-102  
Supersedes C-128  
Effective 1-1-65

All distances must be from the outer boundaries of the Section.

Operator <b>SOUTHLAND ROYALTY COMPANY</b>			Lease <b>REESE MESA</b>		Well No. <b>2-A</b>
Unit Letter <b>J</b>	Section <b>11</b>	Township <b>32N</b>	Range <b>8W</b>	County <b>San Juan</b>	
Actual Footage Location of Well: <b>2380</b> feet from the <b>South</b> line and <b>1770</b> feet from the <b>East</b> line					
Ground Level Elev. <b>7050</b>	Producing Formation <b>Mesa Verde</b>		Pool <b>Blanco</b>	Dedicated Acreage <b>299.89</b>	Acres

1. Outline the acreage dedicated to the subject well by colored pencil or hachure marks on the plat below.
2. If more than one lease is dedicated to the well, outline each and identify the ownership thereof (both as to working interest and royalty).
3. If more than one lease of different ownership is dedicated to the well, have the interests of all owners been consolidated by communitization, unitization, force-pooling, etc?

☐ Yes ☐ No If answer is "yes," type of consolidation \_\_\_\_\_

If answer is "no," list the owners and tract descriptions which have actually been consolidated. (Use reverse side of this form if necessary.) \_\_\_\_\_

No allowable will be assigned to the well until all interests have been consolidated (by communitization, unitization, forced-pooling, or otherwise) or until a non-standard unit, eliminating such interests, has been approved by the Commission.

CERTIFICATION

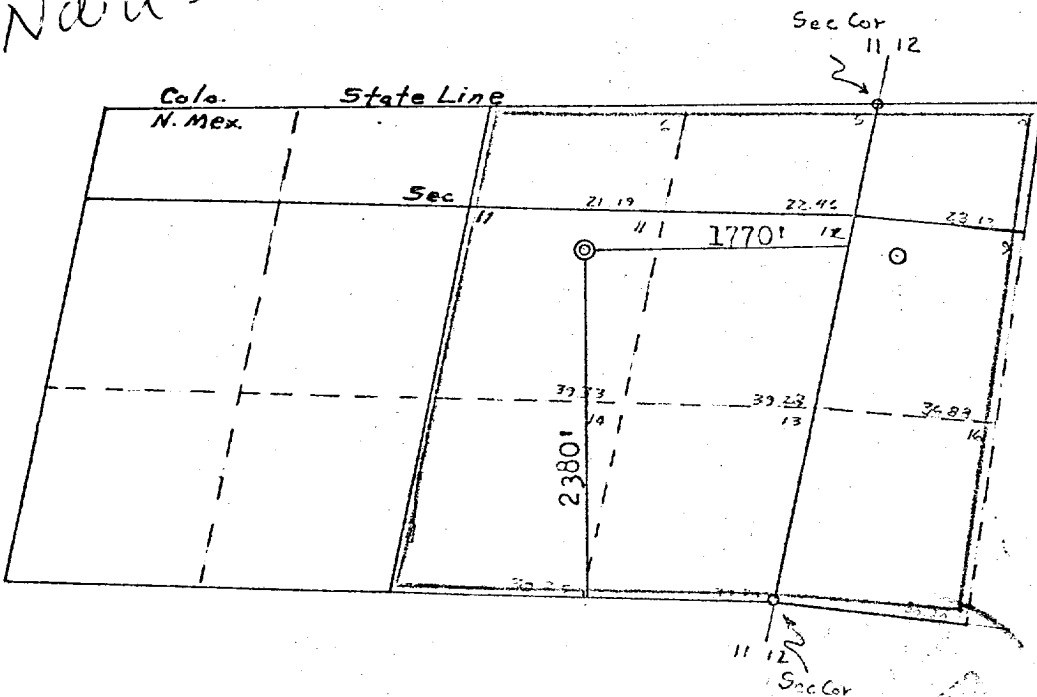
I hereby certify that the information contained herein is true and complete to the best of my knowledge and belief.

Name *CC. Parsons*  
Position  
District Engineer  
Company  
Southland Royalty Company  
Date  
June 19, 1978

I hereby certify that the well location shown on this plat was plotted from field notes of actual surveys made by me or under my supervision, and that the same is true and correct to the best of my knowledge and belief.

Date Surveyed  
June 16, 1978  
Registered Professional Engineer and Land Surveyor  
*Fred B. Kerr Jr.*  
Fred B. Kerr Jr.  
Certificate No.  
3950

*Nau - R-3817*



Scale: 1" = 1320'