

UNITED STATES
DEPARTMENT OF THE INTERIOR
GEOLOGICAL SURVEY

APPLICATION FOR PERMIT TO DRILL, DEEPEN, OR PLUG BACK

1a. TYPE OF WORK

DRILL ☒

DEEPEN ☐

PLUG BACK ☐

b. TYPE OF WELL

OIL
WELL ☒

GAS
WELL ☐

OTHER ☐

SINGLE
ZONE ☒

MULTIPLE
ZONE ☐

2. NAME OF OPERATOR

Energetics, Inc.

3. ADDRESS OF OPERATOR

333 W. Hampden Ave., Suite 1010, Englewood, CO 80110

4. LOCATION OF WELL (Report location clearly and in accordance with any State requirements.)

At surface

720' FNL & 860' FWL

At proposed prod. zone

Same

14. DISTANCE IN MILES AND DIRECTION FROM NEAREST TOWN OR POST OFFICE*

15. DISTANCE FROM PROPOSED*
LOCATION TO NEAREST
PROPERTY OR LEASE LINE, FT.
(Also to nearest drlg. unit line, if any)

16. NO. OF ACRES IN LEASE

640

17. NO. OF ACRES ASSIGNED
TO THIS WELL

40

18. DISTANCE FROM PROPOSED LOCATION*
TO NEAREST WELL, DRILLING, COMPLETED,
OR APPLIED FOR, ON THIS LEASE, FT.

19. PROPOSED DEPTH

2630

20. ROTARY OR CABLE TOOLS

Rotary & Cable Tools

21. ELEVATIONS (Show whether DF, RT, GR, etc.)

5634' G.L.

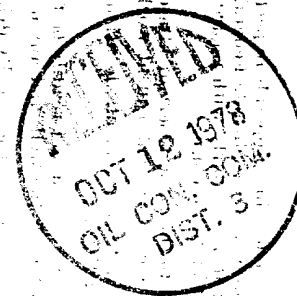
22. APPROX. DATE WORK WILL START*

January 7, 1979

23. PROPOSED CASING AND CEMENTING PROGRAM

SIZE OF HOLE	SIZE OF CASING	WEIGHT PER FOOT	SETTING DEPTH	QUANTITY OF CEMENT
12 1/2	8 5/8	32	100	100 sk.
7 7/8	5 1/2	15.5	2430	330 sk.
4 3/4	Open Hole		2430-2630	

(See Attachments)



IN ABOVE SPACE DESCRIBE PROPOSED PROGRAM: If proposal is to deepen or plug back, give data on present productive zone and proposed new productive zone. If proposal is to drill or deepen directionally, give pertinent data on subsurface locations and measured and true vertical depths. Give blowout preventer program, if any.

24.

SIGNED

John Alexander
John Alexander

TITLE

Agent

DATE

October 6, 1978

(This space for Federal or State office use)

PERMIT NO.

APPROVAL DATE

APPROVED BY

CONDITIONS OF APPROVAL, IF ANY:

ok Frank

TITLE

DATE

OCT 11 1978

U. S. GEOLOGICAL SURVEY
DENVER, COLO.

**NEW MEXICO OIL CONSERVATION COMMISSION
WELL LOCATION AND ACREAGE DEDICATION PLAT**

Form C-102
Supersedes C-122
Effective 1-1-65

All distances must be from the outer boundaries of the Section.

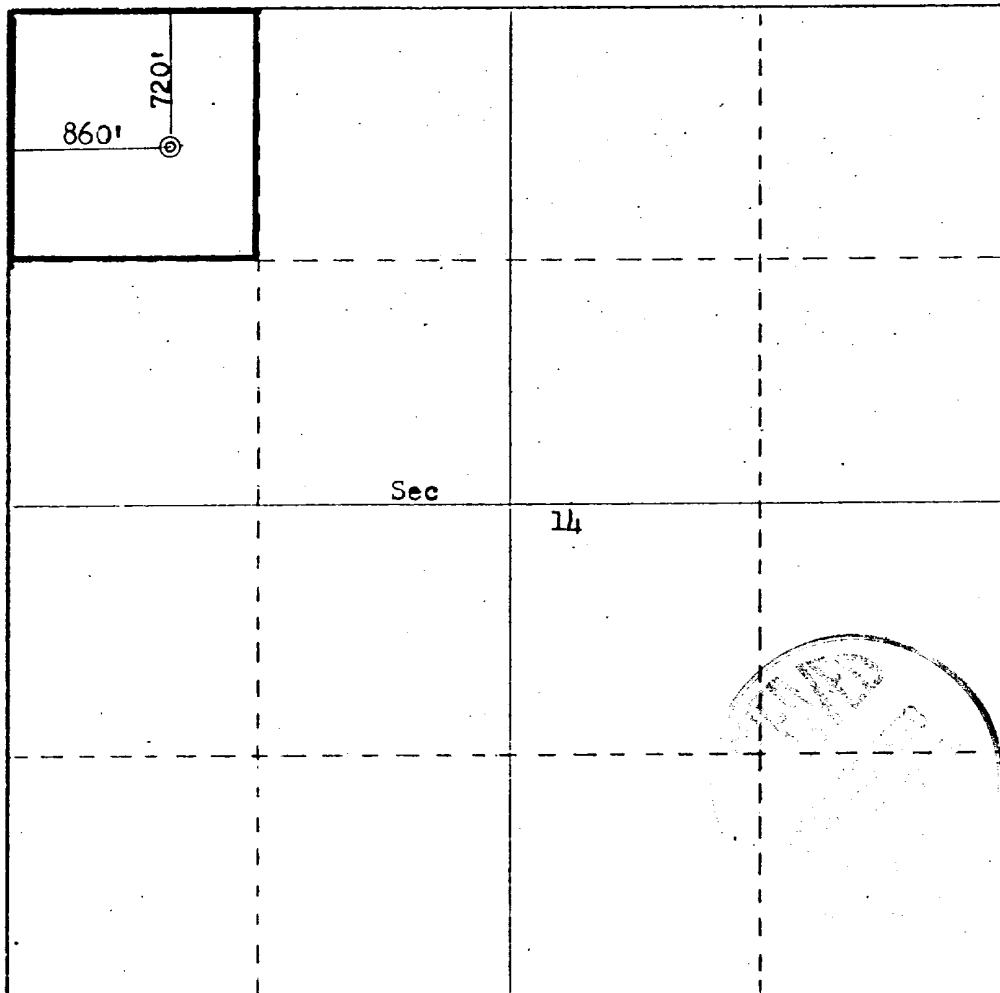
Operator ENERGETICS, INC.			Lease UTE 14		Well No. 11
Unit Letter D	Section 14	Township 31N	Range 15W	County San Juan	
Actual Footage Location of Well:					
720	feet from the	North	line and	860	feet from the
					West
Ground Level Elev. 5634	Producing Formation Gallup		Pool Verde Gallup		Dedicated Acreage: 40 Acres

1. Outline the acreage dedicated to the subject well by colored pencil or hachure marks on the plat below.
2. If more than one lease is dedicated to the well, outline each and identify the ownership thereof (both as to working interest and royalty).
3. If more than one lease of different ownership is dedicated to the well, have the interests of all owners been consolidated by communitization, unitization, force-pooling, etc?

☐ Yes ☐ No If answer is "yes," type of consolidation _____

If answer is "no," list the owners and tract descriptions which have actually been consolidated. (Use reverse side of this form if necessary.) _____

No allowable will be assigned to the well until all interests have been consolidated (by communitization, unitization, forced-pooling, or otherwise) or until a non-standard unit, eliminating such interests, has been approved by the Commission.



CERTIFICATION

I hereby certify that the information contained herein is true and complete to the best of my knowledge and belief.

John Clefander
Name
Agent

Position
Energetics, Inc.

Company
October 6, 1978

Date

I hereby certify that the well location shown on this plat was plotted from field notes of actual surveys made by me or under my supervision, and that the same is true and correct to the best of my knowledge and belief.

Date Surveyed
September 6, 1978

Registered Professional Engineer and/or Surveyor

Fred H. Kerr Jr.
Fred H. Kerr Jr.

Certificate No.
3950

0 330 660 990 1320 1650 1980 2310 2640 2970 3300 3630 3960 4290 4620 4950 5280 5610 5940 6270 6600

Energetics, Incorporated
FORMATION INFORMATION AND DRILLING PRACTICES

WELL:

Ute 14 No. 11

LOCATION:

720' FNL & 860' FWL
Sec 14, T31N, R15W
San Juan Co., NM

LEASE NO.:

MOO-C-1420-1720

1) Surface formation.

Menefee

2) Estimated tops of important geologic markers.

Point Lookout	683
Mancos	1067
Gallup	2430

3) Hydro carbon, water or mineral bearing formation.

2430' Oil

4) Proposed casing program.

0-100' 8 5/8, 32#, new casing. Cement with 100 sk. class "B" + 2% CaCl_2 .

0-2430' 5½, 15.5#, new casing. Cement with 230 sk. Halliburton Light with 6¼ lb. Gilsonite/sk. followed by 100 sk. class "B" + 2% CaCl_2 with 6¼ lb. Gilsonite/sk.

2430-2630 Open hole (drill with Cable tool)

5) Specifications for pressure control equipment.

The attached schematic shows the type of blow out preventer to be used while drilling. The unit will be tested to 200 psi as soon as possible after its installation on the surface pipe. Testing will be done with the rig pump. This is a manual type preventer, and its operation will be manually checked when practical.

6) Drilling fluids.

Depth	Type	Viscosity	Weight	Fluid loss
0-100	Gel-Line	35-55	8.9-9.2	N/C
100-2430	Gel-Chem	30-40	8.6-9.5	10
2430-2630	Water			

7) Auxiliary equipment.

- a. bit float
- b. full opening valve for stabbing in drill pipe when the kelly is not in use.

8) Logging - Coring - Drill Stem Testing.

Logging: Induction Electric Log, Formation Compensated Density, Gamma Ray, Caliper

Coring: None

Drill Stem Testing: None

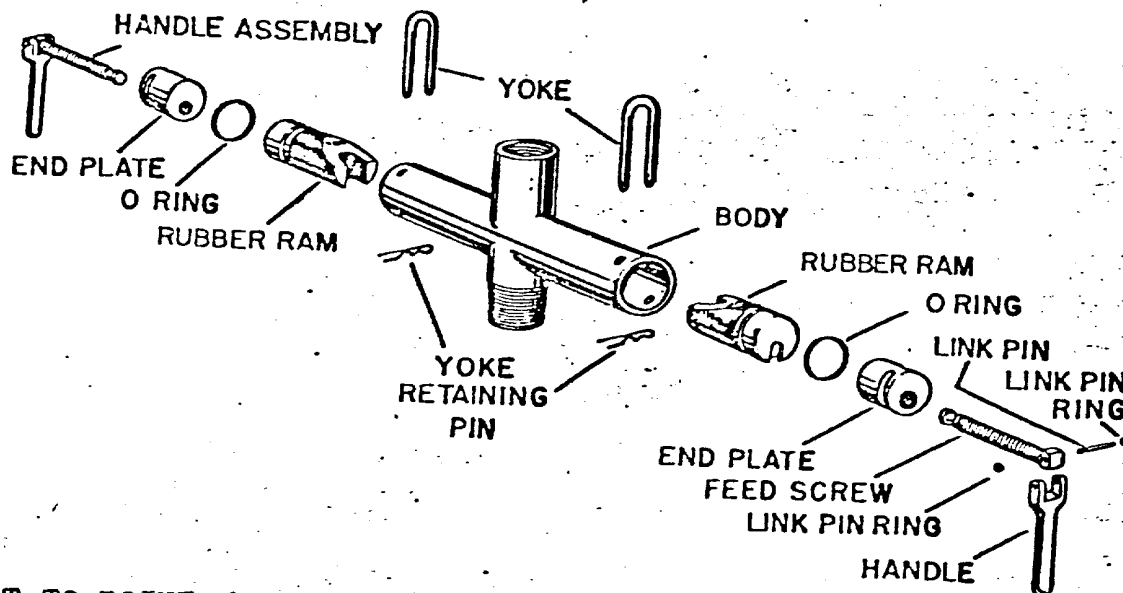
- 9) Abnormal temperatures, pressures, or hazardous conditions.

None expected.

- 10) Starting Date.

Anticipated starting date is January 7, 1979. Approximately 15 days will be needed to build roads and location and drill the well to total depth. If commercial, completion will commence immediately and require approximately seven days to complete.

BLOWOUT PREVENTERS



ATTACHMENT TO POINT 5
API SERIES 6" 600

Energetics, Incorporated
Surface Development Plan

WELL:

Ute 14 #11

LOCATION:

720' FNL & 860' FWL
Sec 14, T31N, R15W
San Juan Co., NM

LEASE NO.:

MOO-C-1420-1720

1) Existing roads. (Shown in green.)

The attached topographic map shows all existing roads within one mile of the proposed location. Access will be made to an existing road 100 feet west of the location.

Some existing roads are in poor condition and will have to be upgraded to handle normal drilling activity traffic.

2) Planned access road. (Shown in red.)

The planned access road will be approximately 100' long and 20' wide. Maximum grade will be 5%. No turnouts or culverts will be required. Water bars will be used to aid drainage and prevent erosion. No surfacing material will be required. No gates, cattle guards, or fences will be crossed. No cuts or fills should be required.

3) Location of existing wells.

All wells (water, abandoned, disposal, and drilling) are shown and so labeled on the attached section layout.

4) Location of tank batteries, production facilities and production, gathering and service lines.

All production facilities are to be contained within the proposed location. Energetics does not own or control any such facilities in the area.

5) Location and type of water supply.

Water for drilling will be trucked from the San Juan River located fifteen miles southeast of location. This water is not on federal land.

6) Source of construction material.

Any construction material required for road or location will be excess material accumulated during building of such sites.

7) Methods of handling waste disposal.

(Refer to attached well site layout.)

All burnable material will be burned in the trash pit when conditions permit. All nonburnable material (drilling fluids, cuttings, chemicals etc.) will be held in the reserve pit and buried when dry. Any oil produced while drilling will be trucked from the location prior to leaving the pit to dry. Pits will be fenced during dryout time, then completely back filled with dirt prior to preparing the location for production or abandonment.

8) Ancillary facilities.

No ancillary facilities are planned.

9) Well site layout.

The attached layout shows the drilling rig with all facilities. Cut and fill required is also indicated.

10) Plans for restoration of surface.

Restoration of well site and access road will begin within 90 days of well completion, weather permitting.

Should the well be abandoned, the drilling site will be reshaped to its approximate former contour. The access road will be plowed and leveled. Both site and road will have top soil replaced and will be reseeded when germination can occur.

Should the well be commercial, that portion of the location, not needed for operation, will be repaired as above. The portion needed for daily production operations, and the access road, will be maintained in good repair.

In either case, clean up of the site will include burning any safely burnable material, filling of all pits, carrying away of all nonburnable material and chemicals that can not be buried. Any oil that has accumulated on the pits will be trucked away.

11) Other information.

General topography of the area may be seen on the attached map.

The drilling site is flat and is covered with sage brush and other native grasses. There are no creeks, rivers or ponds in the area. The soil is sandy loam. Small animals and sheep inhabit the area.

The surface is administered by the Bureau of Indian Affairs, and belongs to the Ute Mountain Tribe.

There are no occupied dwellings in the area.

There are no archaeological or cultural sites visible on the location. The archaeologist report is forthcoming.

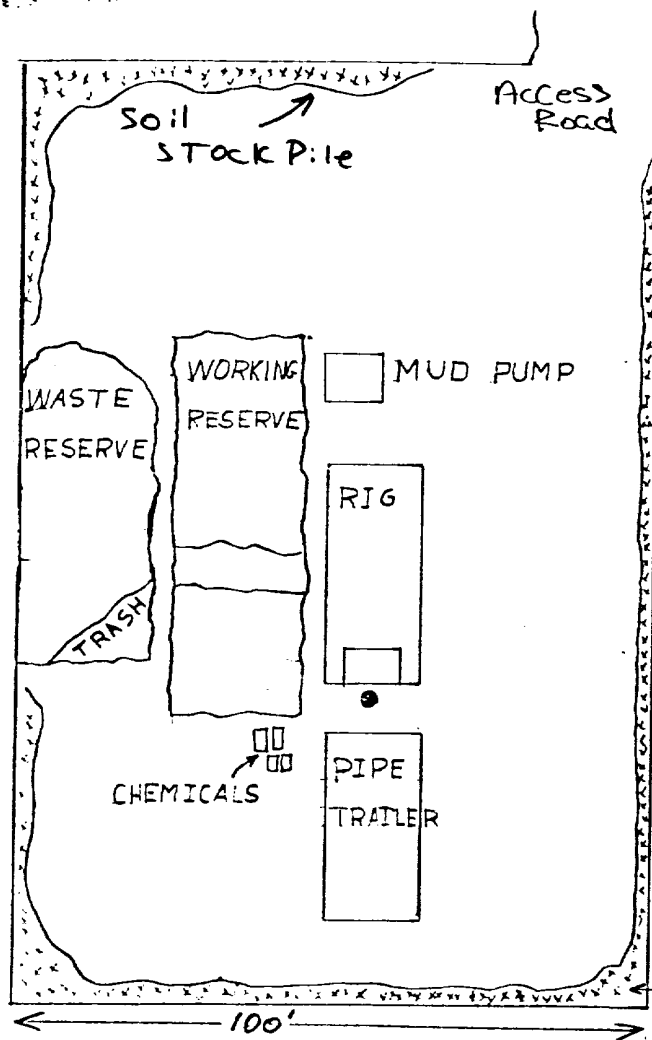
12)

John Alexander
3E Company, Inc.
P.O. Box 190
Farmington, NM 87401
Phone: 505-327-4020

- 13) I hereby certify that I or persons under my direct supervision, have inspected the proposed drill site and access route; and that I am familiar with the conditions which presently exist; that the statements made in the plan are to the best of my knowledge, true and correct; and, that the work associated with the operations proposed herein will be performed by Energetics, Incorporated and its contractors and sub-contractors in conformity with this plan and the terms and conditions under which it is approved.

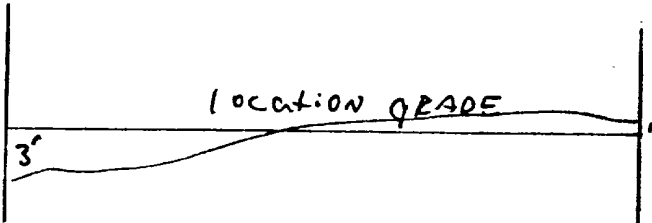
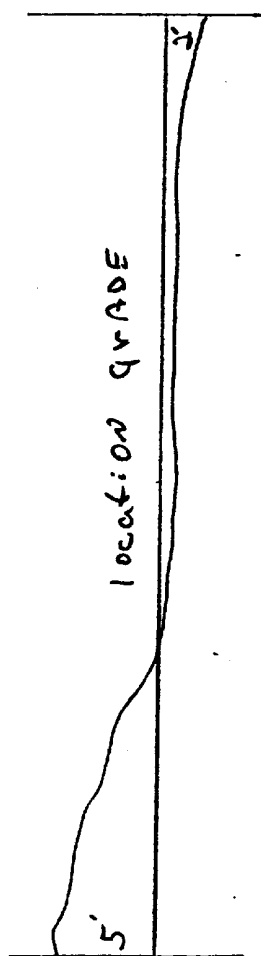
October 6, 1978


John Alexander



PLAN VIEW 1"=30'
ALL PITS-EARTHEN

SOIL MATERIAL STOCKPILE
Vertical Scale 1"=10'



WELL SITE LAYOUT
ENERGETICS INC
UTE 14 #11

OFFSET WELLS

COMPANY:

ENERGETICS

INC.

WELL:
#11

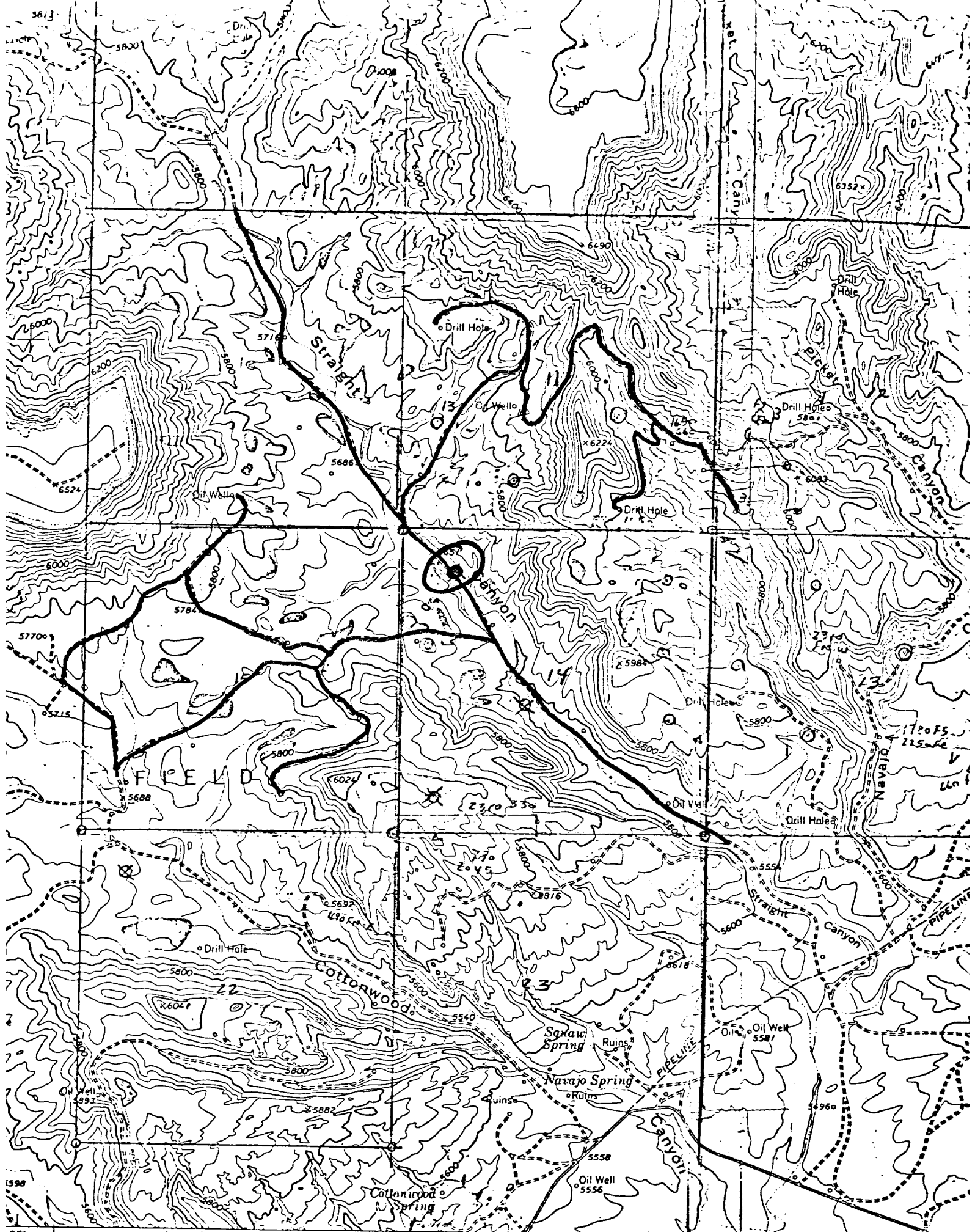
S.10

S.11

S.15

N	C	B	A	D	C	B	A
E	F	Δ	H	Δ	F	C	H
U	K	Δ	E	U	Δ	J	Δ
M	Δ	N	O	Δ	M	N	O
D	Δ	C	B	Δ	D	C	B
Δ	E	Δ	H	Δ	Δ	F	Δ
E	F	Δ	H	Δ	Δ	C	Δ
U	Δ	J	Δ	U	K	Δ	I
Δ	N	O	P	M	Δ	O	P

• Subject well
Δ P & A well
□ ACTIVE WELL



ROAD CLASSIFICATION

Light-duty ————— Unimproved dirt ————

Vicinity Map for
 ENERGETICS, INC. #11 UTE 14
 720'FNL 860'FWL Sec 14-T31N-R15W
 San Juan County, New Mexico

AMS 4357 IV NW-SERIES V881

Mapped, edited, and published by
 Control by USGS and USC&GS
 Topography by photogrammetric methods
 photographs taken 1958 and 1962 Field
 Polyconic projection. 1927 North America
 0.000-foot grids based on New Mexico
 west zone and Colorado coordinate system
 Transverse Mercator

names have not been
 indicate selected for