

UNITED STATES  
DEPARTMENT OF THE INTERIOR  
GEOLOGICAL SURVEY

## APPLICATION FOR PERMIT TO DRILL, DEEPEN, OR PLUG BACK

## 1a. TYPE OF WORK

DRILL ☒DEEPEN ☐PLUG BACK ☐

## b. TYPE OF WELL

OIL  
WELL ☐GAS  
WELL ☒

OTHER

SINGLE  
ZONE ☒MULTIPLE  
ZONE ☐

## 2. NAME OF OPERATOR

El Paso Natural Gas Company

## 3. ADDRESS OF OPERATOR

PO Box 289, Farmington, NM 87401

## 4. LOCATION OF WELL (Report location clearly and in accordance with any State requirements.\*)

At surface

1560'N, 1125'E

At proposed prod. zone

same

## 14. DISTANCE IN MILES AND DIRECTION FROM NEAREST TOWN OR POST OFFICE\*

6 miles south of Allison, Colorado

## 15. DISTANCE FROM PROPOSED\*

LOCATION TO NEAREST  
PROPERTY OR LEASE LINE, FT.  
(Also to nearest drlg. unit line, if any)

1080'

## 16. NO. OF ACRES IN LEASE

Unit

18. DISTANCE FROM PROPOSED LOCATION\*  
TO NEAREST WELL, DRILLING, COMPLETED,  
OR APPLIED FOR, ON THIS LEASE, FT.

600'

## 19. PROPOSED DEPTH

8320'

17. NO. OF ACRES ASSIGNED  
TO THIS WELL

E / 313.34

## 20. ROTARY OR CABLE TOOLS

Rotary

## 21. ELEVATIONS (Show whether DF, RT, GR, etc.)

6693'GR

## 22. APPROX. DATE WORK WILL START\*

## 23.

## PROPOSED CASING AND CEMENTING PROGRAM

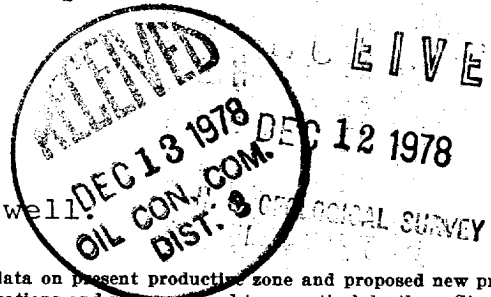
SIZE OF HOLE	SIZE OF CASING	WEIGHT PER FOOT	SETTING DEPTH	QUANTITY OF CEMENT
13 3/4"	9 5/8"	32.3#	200'	224 cu.ft. to circulate
8 3/4"	7"	20.0#	3920'	268 cu.ft. to cover Ojo Alamo
6 1/4"	4 1/2"	10.5# & 11.6#	8320'	677 cu.ft. to fill to intermediate

Selectively perforate and sandwater fracture the Dakota formation.

A 3000 psi WP and 6000 psi test double gate preventer equipped with blind and pipe rams will be used for blow out prevention on this well.

This gas is dedicated.

The E/2 of Section 15 is dedicated to this well.



IN ABOVE SPACE DESCRIBE PROPOSED PROGRAM: If proposal is to deepen or plug back, give data on present productive zone and proposed new productive zone. If proposal is to drill or deepen directionally, give pertinent data on subsurface locations and measured and true vertical depths. Give blowout preventer program, if any.

24.

SIGNED

*W. G. Sisco*

TITLE

Drilling Clerk

DATE

12-5-78

(This space for Federal or State office use)

PERMIT NO.

APPROVAL DATE

APPROVED BY

TITLE

DATE

CONDITIONS OF APPROVAL, IF ANY:

\*See Instructions On Reverse Side

NEW MEXICO OIL CONSERVATION COMMISSION  
WELL LOCATION AND ACREAGE DEDICATION PLAT

Form C-107  
Supersedes C-128  
Effective 1-1-65

All distances must be from the outer boundaries of the Section.

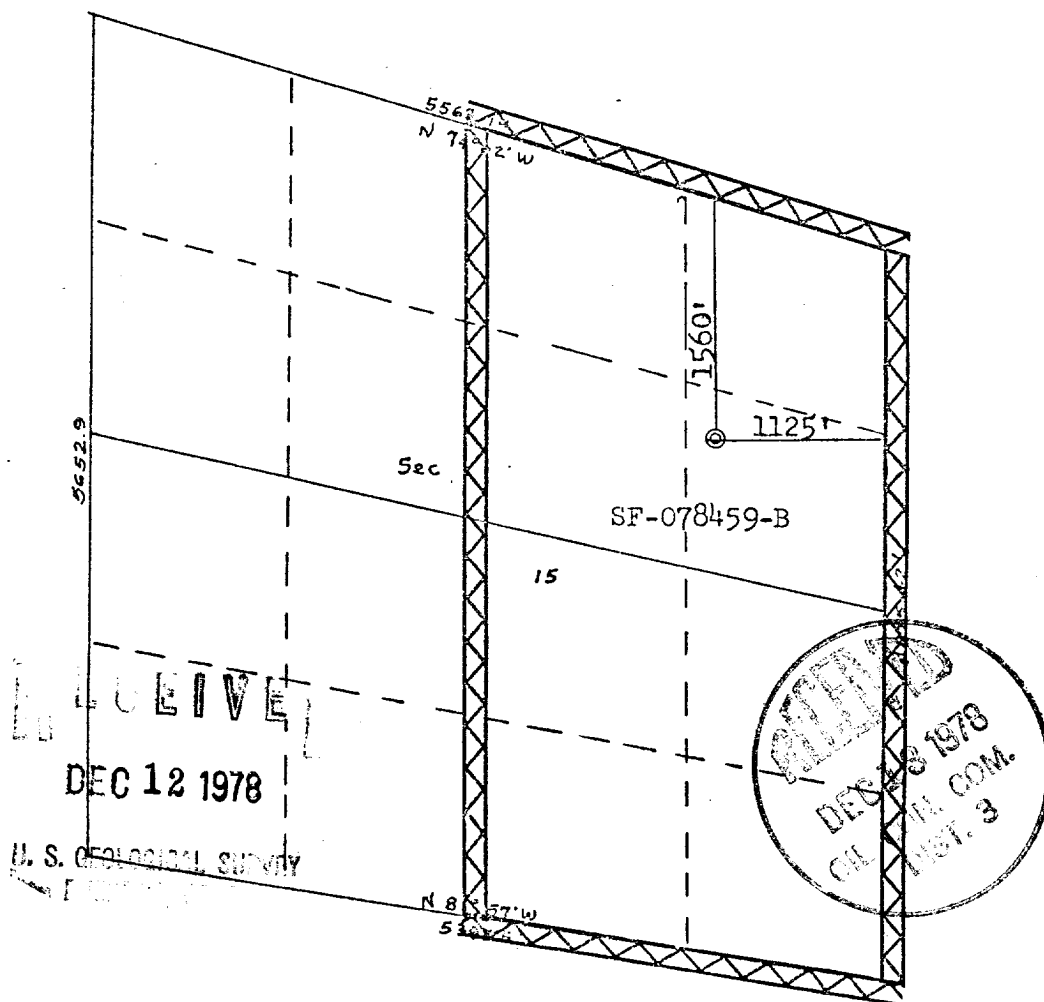
Operator <b>EL PASO NATURAL GAS COMPANY</b>			Lease <b>ALLISON UNIT (SF-078459-B)</b>		Well No. <b>36</b>
Unit Letter <b>H</b>	Section <b>15</b>	Township <b>32N</b>	Range <b>7W</b>	County <b>San Juan</b>	
Actual Footage Location of Well: <b>1560</b> feet from the <b>North</b> line and <b>1125</b> feet from the <b>East</b> line					
Ground Level Elev: <b>6693</b>	Producing Formation <b>Dakota</b>		Pool <b>Basin Dakota</b>	Dedicated Acreage: <b>313.34</b> Acres	

1. Outline the acreage dedicated to the subject well by colored pencil or hatchure marks on the plat below.
2. If more than one lease is dedicated to the well, outline each and identify the ownership thereof (both as to working interest and royalty).
3. If more than one lease of different ownership is dedicated to the well, have the interests of all owners been consolidated by communitization, unitization, force-pooling, etc?

☒ Yes ☐ No If answer is "yes," type of consolidation Unitization

If answer is "no," list the owners and tract descriptions which have actually been consolidated. (Use reverse side of this form if necessary.)

No allowable will be assigned to the well until all interests have been consolidated (by communitization, unitization, forced-pooling, or otherwise) or until a non-standard unit, eliminating such interests, has been approved by the Commission.



CERTIFICATION

I hereby certify that the information contained herein is true and complete to the best of my knowledge and belief.

*D. G. Evers*

Name  
Drilling Clerk  
Position  
El Paso Natural Gas Co.  
Company  
December 7, 1978  
Date

I hereby certify that the well location shown on this plat was plotted from field notes of actual surveys made by me or under my supervision, and that the same is true and correct to the best of my knowledge and belief.

Date Surveyed  
October 11, 1978  
Registered Professional Engineer and Land Surveyor  
*Fred B. Karr Jr.*  
Fred B. Karr Jr.  
Certificate No.  
3950

Multi-Point Surface Use Plan  
Allison Unit #36

1. Existing Road - Please refer to Map No. 1 which shows the existing roads. New roads which will be required have been marked on this map. All existing and new roads will be properly maintained during the duration of this project.
2. Planned Access Roads - Please refer to Map No. 1. The grade of the access roads will be consistent with that of the local terrain. The road surface will not exceed twenty feet (20') in width. Upon completion of the project, the access road will be adequately drained to control soil erosion. Drainage facilities may include ditches, water bars, culverts or any other measure deemed necessary by trained Company personnel to insure proper drainage. Gates and/or cattleguards will be installed if necessary.
3. Location of Existing Wells - Please refer to Map No. 2.
4. Location of Tank Batteries, Production Facilities, and Production Gathering and Service Lines - Please refer to Maps No. 1 and No. 2. Map No. 2 shows the existing gas gathering lines. Map No. 1 shows the existing roads and new proposed access roads. All known production facilities are shown on these two maps.
5. Location and Type of Water Supply - Water for the proposed project will be obtained from Allison Ditch.
6. Source of Construction Materials - No additional materials will be required to build either the access road or the proposed location.
7. Methods of Handling Waste Materials - All garbage and trash materials will be put into a burn pit shown on the attached Location Plat No. 1. When clean-up operations are begun on the proposed project, the burn pit with its refuse will be buried to a depth of at least three feet (3'). A latrine, the location of which is also shown on Plat No. 1,

RECEIVED  
DEC 12 1978

7. cont'd. will be provided for human waste. If large amounts of liquids are left in the reserve pit after completion of the project, the pit will be fenced until the liquids have had adequate time to dry. The location clean-up will not take place until such time as the reserve pit can be properly covered over to prevent run-off from carrying any of these materials into the watershed. No earthen pit will be located on natural drainages; all earthen pits will be so constructed as to prevent leakage from occurring.
8. Ancillary Facilities - No camps or airstrips will be associated with this project.
9. Wellsite Layout - Please refer to the attached Plat No. 1.
10. Plans for Restoration of the Surface - After completion of the proposed project, the location will be cleaned and leveled. The location will be left in such a condition that will enable reseeding operations to be carried out. Seed mixture as designated by the responsible government agency will be used. The reseeding operation will be performed during the time period set forth by the regulatory body. The location production equipment will be painted as designated by the responsible government agency.
11. Other Information - The terrain is rolling hills and pinon covered slopes with pinon and cedar growing.
12. Operator's Representative - W.D. Dawson, PO Box 990, Farmington, NM
13. Certification - I hereby certify that I, or persons under my direct supervision, have inspected the proposed drillsite and access route; that I am familiar with the conditions which presently exist; that the statements made in this plan are, to the best of my knowledge, true and correct; and that the work associated with the operations proposed herein will be performed by El Paso Natural Gas Company and its contractors and sub-contractors in conformity with this plan and the terms and conditions under which it is approved.

  
D. C. Walker

Project Drilling Engineer

RECEIVED  
DEC 12 1978

U. S. GEOLOGICAL SURVEY

December 7, 1978

Operations Plan  
Allison Unit #36

I. Location: 1560'N, 1125'E, Section 15, T-32-N, R-7-W, San Juan County, NM

Field: Basin Dakota

Elevation: 6693'GR

II. Geology:

A. Formation Tops:	Surface	San Jose	Menefee	5605'
	Ojo Alamo	2730'	Point Lookout	5880'
	Kirtland	2835'	Gallup	7388'
	Fruitland	3190'	Greenhorn	7969'
	Pic.Cliffs	3440'	Graneros	8023'
	Lewis	3720'	Dakota	8135'
	Mesa Verde	5555'	Total Depth	8320'

B. Logging Program: GR-Ind. and GR-Density at Total Depth.

C. Coring Program: none

D. Natural Gauges: 5880', 7388', 8023', 8135' and at Total Depth.  
Also gauge any noticeable increase in gas. Record all gauges in daily drilling report and on morning report.

III. Drilling:

A. Mud Program: mud from surface to 3920'. Gas from intermediate casing to Total Depth.

IV. Materials:

A. Casing Program:	<u>Hole Size</u>	<u>Depth</u>	<u>Casing Size</u>	<u>Wt.&amp;Grade</u>
	13 3/4"	200'	9 5/8"	32.3# H-40
	8 3/4"	3920'	7"	20.0# K-55
	6 1/4"	6500'	4 1/2"	10.5# K-55
	6 1/4"	8000'	4 1/2"	11.6# K-55
	6 1/4"	8320'	4 1/2"	11.6# N-80

B. Float Equipment: 9 5/8" surface casing - Pathfinder guide shoe (Part No. 2006-1-012).

7" intermediate casing - Pathfinder guide shoe (Part No. 1003-1-007) and Pathfinder self-fill insert float valve (Part No. 2010-6-007), 5 Pathfinder stabilizers (Part No. 107-10) every other joint above shoe. Run float two joints above shoe.

4 1/2" production casing - Larkin geyser shoe (fig. 222) and Larkin flapper type float collar (fig. 404 M&F)

C. Tubing: 8320' of 1 1/2", 2.9#, J-55 10rd EUE tubing with a common pump seating nipple above perforated pup joint with bull plugged full joint for mud anchor on bottom.

D. Wellhead Equipment: 3000 psi test tree. Wellhead representative to set all slips and cut off casing.

V. Cementing:

9 5/8" surface casing - use 190 sks. of Class "B" cement with 1/4# gel-flake per sack and 3% calcium chloride (224 cu.ft. of slurry, 100% excess to circulate to surface). WOC 12 hours. Test casing to 600#/30 minutes.

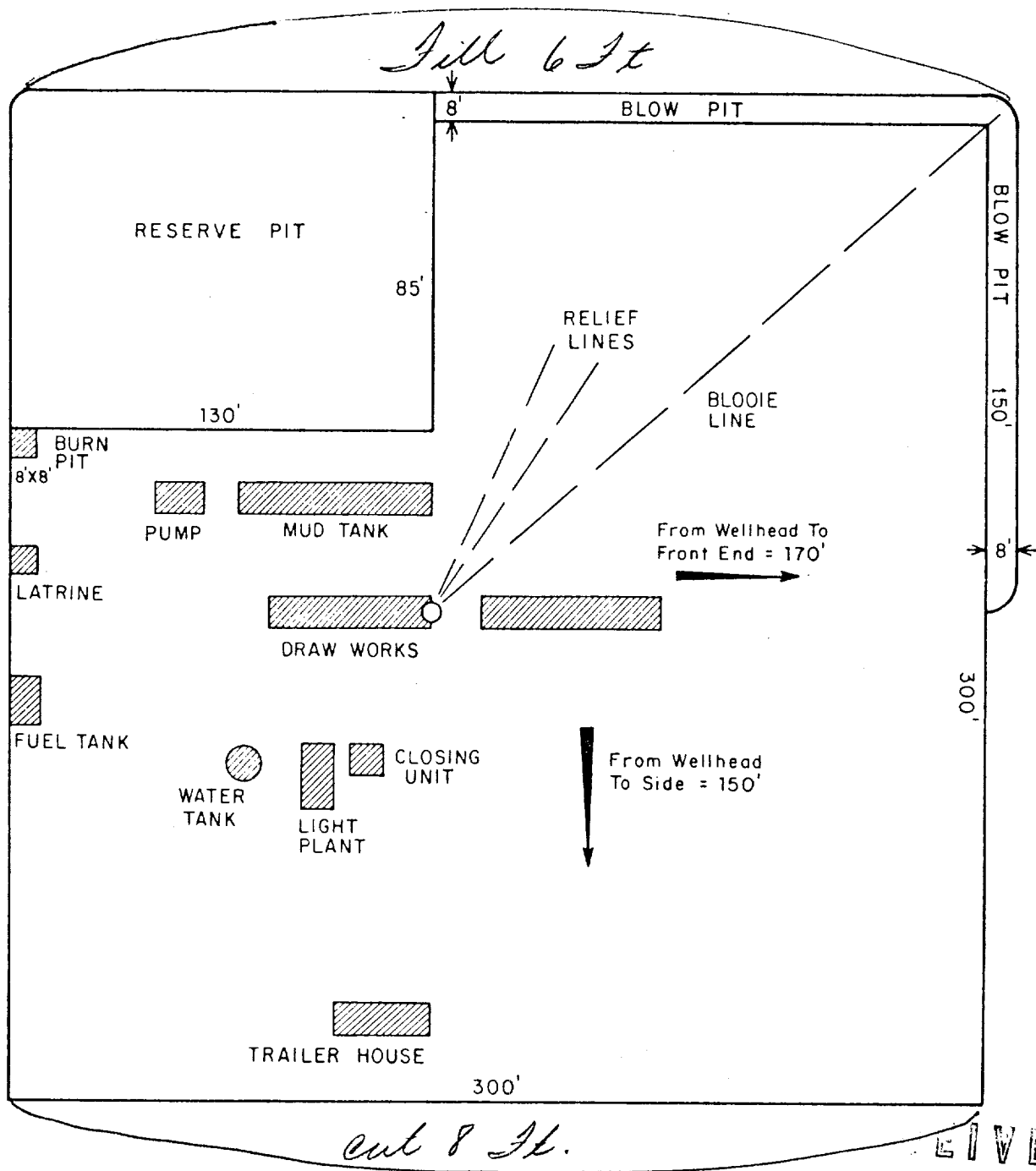
7" intermediate casing - use 93 sks. of 65/35 Class "B" Poz with 6% gel and 2% calcium chloride (8.3 gallons of water per sack) followed by 100 sks. of Class "B" with 2% calcium chloride (268 cu.ft. of slurry, 50% excess to cover Ojo Alamo). Run temperature survey at 8 hours. WOC 12 hours. Test casing to 1200#/30 minutes.

4 1/2" production casing - precede cement with 40 bbls. of gel water (4 sks. gel) cement with 266 sks. of Class "B" with 8% gel, 1/4 cu.ft. fine gilsonite per sack and 0.4% HR-7, followed by 100 sks. of Class "B" with 1/4# fine tuf-plug per sack and 0.4% HR-7 (677 cu.ft. of slurry, 50% excess to fill to intermediate casing). Run temperature survey at 8 hours. WOC 18 hours.

RECEIVED  
DEC 12 1978

U. S. GEOLOGICAL SURVEY

*Allison Unit # 36*

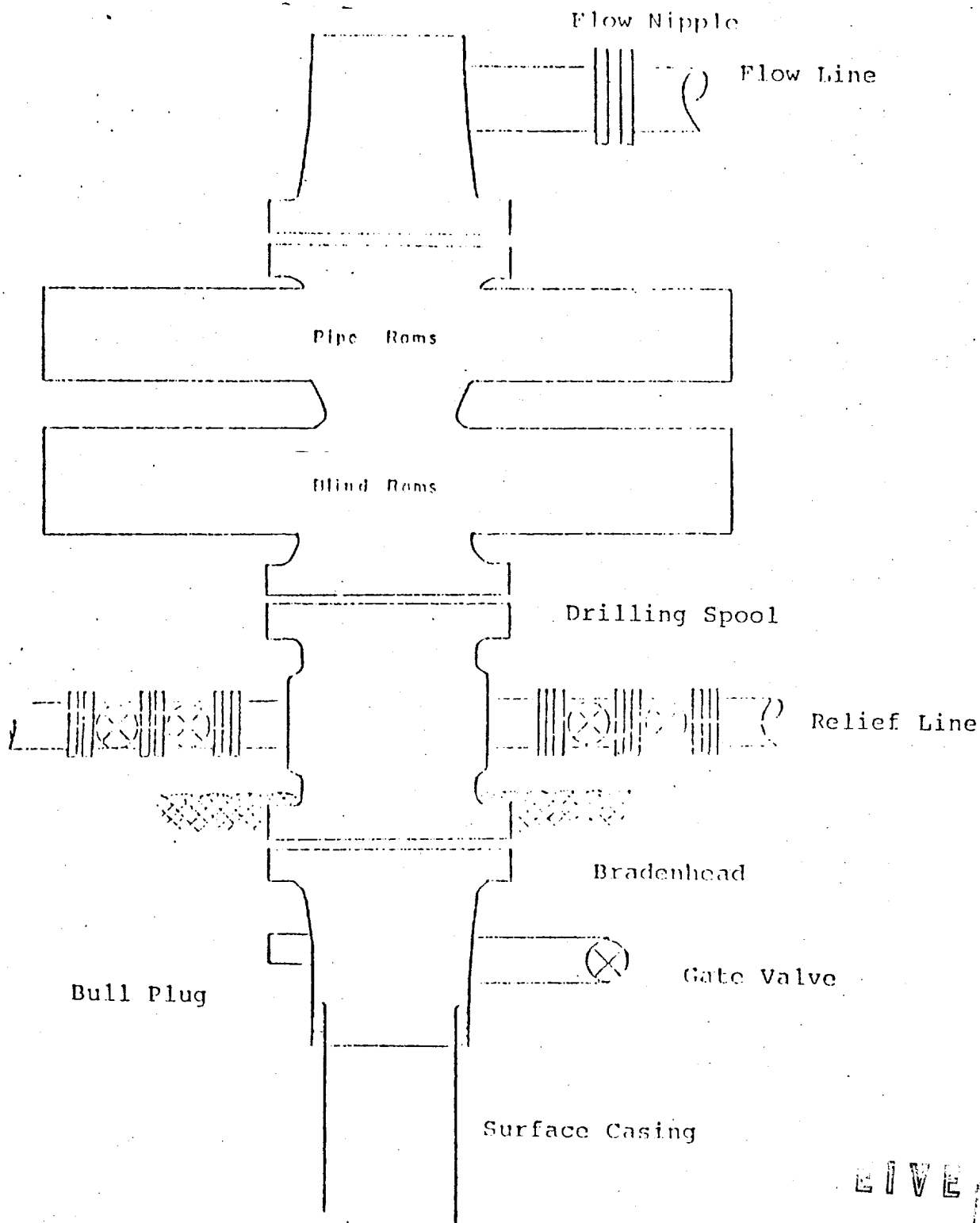


DEC 12 1978

U.S. GEOLOGICAL SURVEY

					ENG. REC.		DATE		<b>e</b> El Paso Natural Gas Company TYPICAL LOCATION PLAT FOR MESAVERDE OR DAKOTA DRILL SITE SCALE: 1" = 50'			DWG. NO.		REV.
					DRAWN		J.L.H. 8-16-78							
					CHECKED									
					CHECKED									
					PROJ. APP.									
					DESIGN									
PRINT RECORD					W.O.									

Typical B.O.P. Installation  
for : Dakota : Well



Series 900 Double Gate BOP, rated  
at 3000 psi Working Pressure

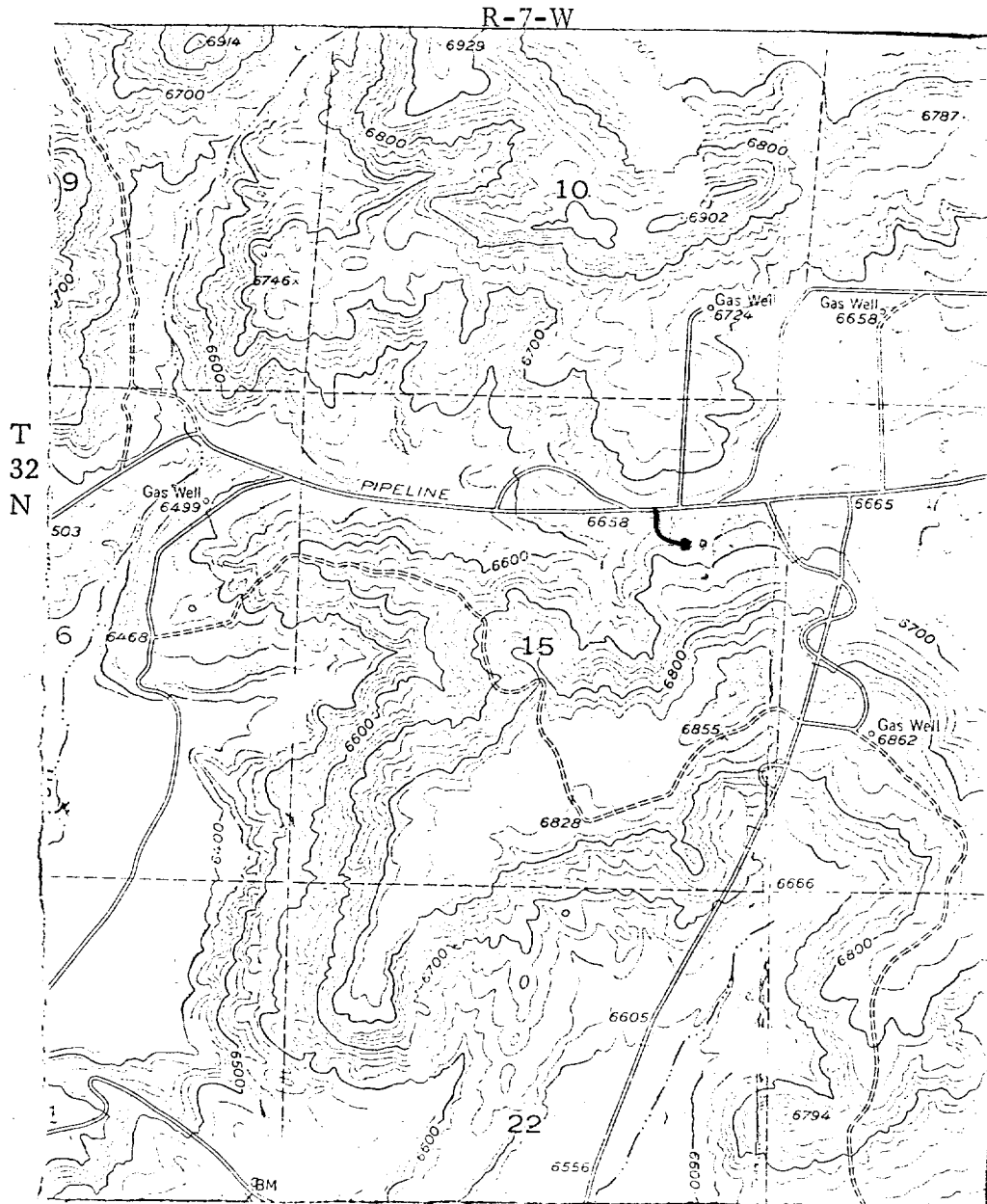
When gas drilling operations begin a Shaffer type  
50 or equivalent rotating head is installed on top of  
the flow nipple and the flow line is converted into  
a blowie line.

DEC 12 1978

U.S. GEOLOGICAL SURVEY



EL PASO NATURAL GAS COMPANY  
Allison Unit #36  
NE 15-32-7



MAP #1

DEC 12 1978

U.S. GEOLOGICAL SURVEY

LEGEND OF RIGHT-OF-WAYS

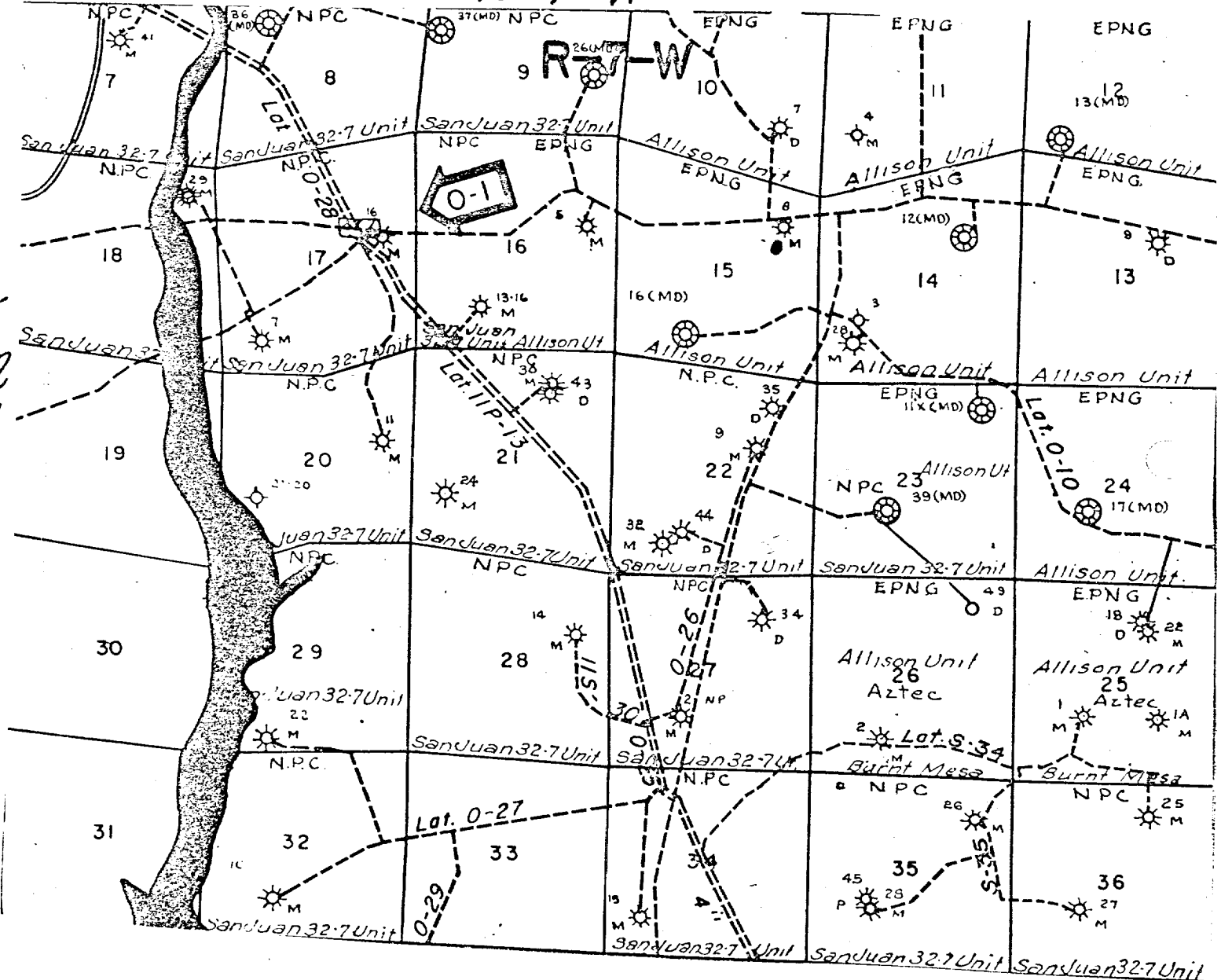
EXISTING ROADS	—————
EXISTING PIPELINES	+ + +
EXISTING ROAD & PIPELINE	+ + +
PROPOSED ROADS	—————
PROPOSED PIPELINES	+ + +
PROPOSED ROAD & PIPELINE	+ + +

# EL PASO NATURAL GAS COMPANY

Allison Unit #36

NE 15-32-7

R-7-W



MAP #2

Proposed Location

DEC 12 1978

U.S. GEOLOGICAL SURVEY