

NEW MEXICO OIL CONSERVATION COMMISSION
WELL LOCATION AND ACREAGE DEDICATION PLAT

Form C-102
Supersedes C-128
Effective 1-1-65

All distances must be from the outer boundaries of the Section.

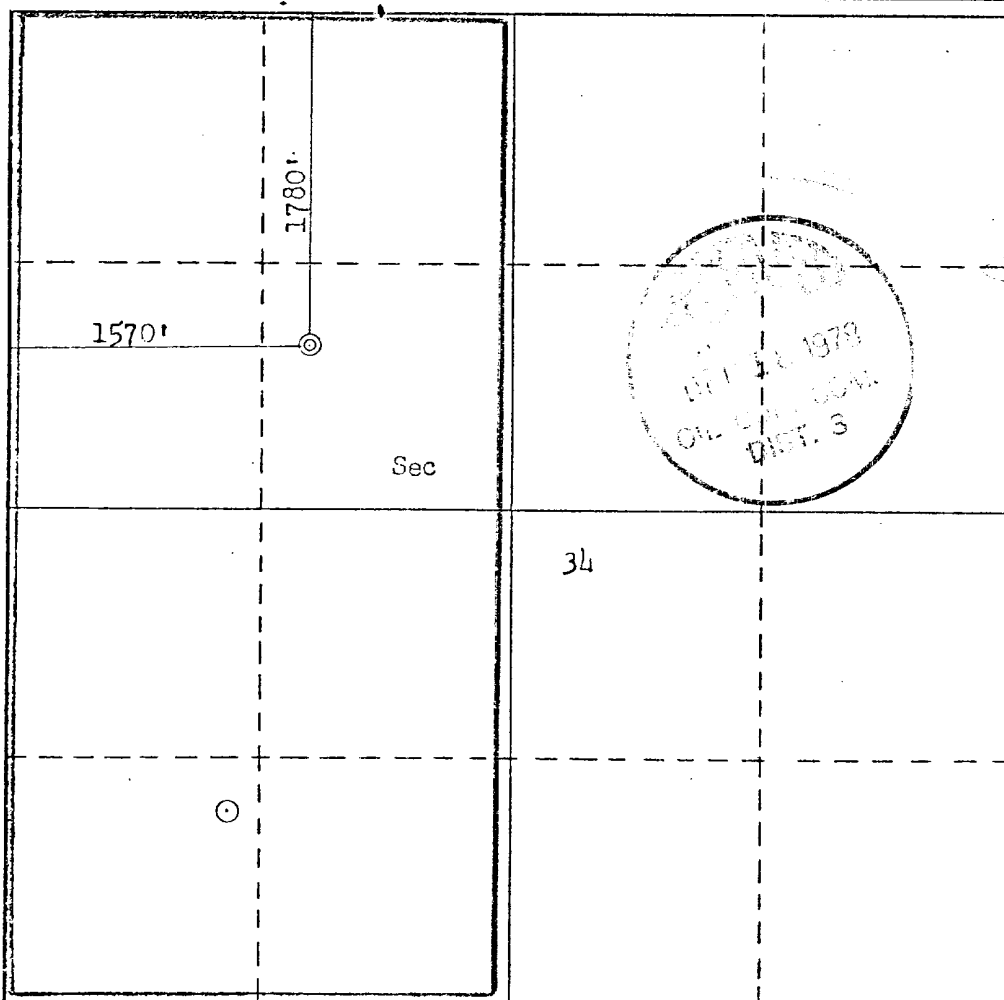
Operator SOUTHLAND ROYALTY COMPANY			Lease THOMPSON		Well No. 7A
Unit Letter F	Section 34	Township 31N	Range 12W	County San Juan	
Actual Footage Location of Well: 1780 feet from the North line and 1570 feet from the West line					
Ground Level Elev. 6057	Producing Formation Mesa Verde	Pool Blanco	Dedicated Acreage: 320.00 Acres		

1. Outline the acreage dedicated to the subject well by colored pencil or hachure marks on the plat below.
2. If more than one lease is dedicated to the well, outline each and identify the ownership thereof (both as to working interest and royalty).
3. If more than one lease of different ownership is dedicated to the well, have the interests of all owners been consolidated by communitization, unitization, force-pooling, etc?

☐ Yes ☐ No If answer is "yes," type of consolidation _____

If answer is "no," list the owners and tract descriptions which have actually been consolidated. (Use reverse side of this form if necessary.) _____

No allowable will be assigned to the well until all interests have been consolidated (by communitization, unitization, forced-pooling, or otherwise) or until a non-standard unit, eliminating such interests, has been approved by the Commission.



CERTIFICATION

I hereby certify that the information contained herein is true and complete to the best of my knowledge and belief.

Name _____
Position
District Production Manager
Company
Southland Royalty Company
Date
December 5, 1978

I hereby certify that the well location shown on this plat was plotted from field notes of actual surveys made by me or under my supervision, and that the same is true and correct to the best of my knowledge and belief.

Date Surveyed
November 8, 1978
Registered Professional Engineer
and/or Land Surveyor
Fred B. Kerr, Jr.
Certificate No.
3950

0 330 660 990 1320 1650 1980 2310 2640 2000 1500 1000 500 0

DRILLING SCHEDULE - THOMPSON #7A

Location: 1780' FNL & 1570' FWL, Section 34, T31N, R12W
San Juan County, New Mexico

Field: Blanco Mesaverde

Elevation: 6057' GR

Geology:

Formation Tops:	Ojo Alamo	1389'	Cliff House	3949'
	Fruitland	2079'	Point Lookout	4769'
	Pictured Cliffs	2430'	Total depth	5119'* (Add 50' if hole gets wet)
	Intermediate TD	2680'		

Logging Program: GR-Density and GR-Induction at total depth.

Coring Program: None

Natural Gauges: Gauge at last connection above Cliff House, Point Lookout and total depth.
Gauge any increase in gas flow.

Drilling:

Contractor:

Tool Pusher:

SRC Representative:

SRC Ans. Service: 325-1841

Dispatch Number: 325-7391

Mud Program: Fresh water mud from surface to Intermediate total depth.
Air from intermediate to total depth.

Materials:

Casing Program:	Hole Size	Depth	Casing Size	Wt. & Grade
	12-1/4"	200'	9-5/8"	36# K-55
	8-3/4"	2680'	7"	20# K-55
	6-1/4"	2530'-5119'	4-1/2"	10.5# K-55

Cementing:

9-5/8" surface casing: 125 cu. ft. (105 sxs) of Class "B" with 1/4# gel flakes per sack and 3% CaCl₂. (100% excess)

7" intermediate casing: 291 cu. ft. (155 sxs) of 50/50 Class "B" Poz with 6% gel. Mix with 7.2 gals water per sx to weigh 12.85 ppg. Tail in with 50 sxs of Class "B" with 2% CaCl₂. If lost circulation occurs, add 1/4# celloflake per sx. (50% excess to cover Ojo Alamo.)

4-1/2" liner: 452 cu. ft. Procode cement with 20 bbls gelled water. Cement with 305 sxs of 50/50 Class "B" Poz with 6% gel, 1/4# celloflake and 6% halad 9. Mix water with 7.2 gals water per sx to weigh 12.85 ppg. (70% excess to circulate liner (360 sxs)



Southland Royalty Company

December 5, 1978

United States Geological Survey
P. O. Box 959
Farmington, New Mexico

Attention: Mr. P. T. McGrath

Dear Sir:

Enclosed please find map showing existing roads and planned access roads to Southland Royalty Company's Thompson #7A well. The locations of tank batteries and flow lines will be on location with well. A burn pit will be provided for disposal of trash. Cuttings, drilling fluid and produced fluids will be put into the reserve pit and properly disposed of depending on amount and type of fluids.

Contractor will furnish restroom facilities on location.

There will be no air strips or camps.

Also, enclosed is a location layout showing approximate location of rig, pits and pipe racks and cut required to build this location.

Water supply will be the Farmer's Ditch. All water will be transported by truck and stored on location.

The location will be restored according to Bureau of Land Management standards. This work will begin when all related construction is finished.

Mr. Max Larson will be Southland Royalty Company's field representative supervising these operations.

Yours truly,

L. O. Van Ryan
District Production Manager

LOVR/dg



Southland Royalty Company

December 5, 1978

United States Geological Survey
P. O. Box 959
Farmington, New Mexico

Attention: Mr. P. T. McGrath

Re: Blowout Preventer Plan

Dear Sir:

All drilling and completion rigs will be equipped with 6" or larger double hydraulic blowout preventers and a hydraulic closing unit with steel lines.

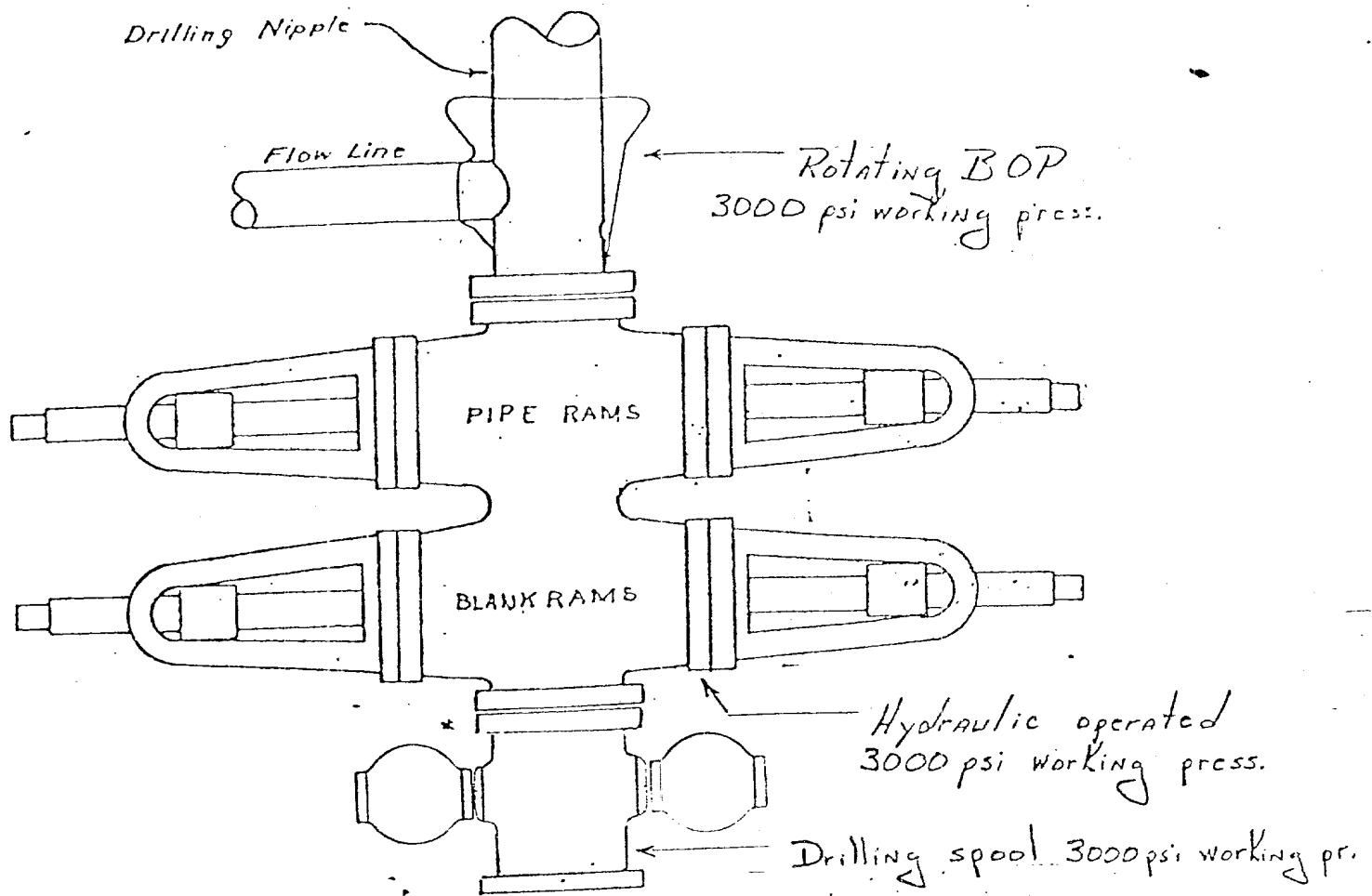
The preventer is 3000# working pressure and 6000# test.

All crews will be thoroughly trained in the operation of this preventer. The preventer will be tested frequently enough to insure proper operation.

Yours truly,

L. O. Van Ryan
District Production Manager

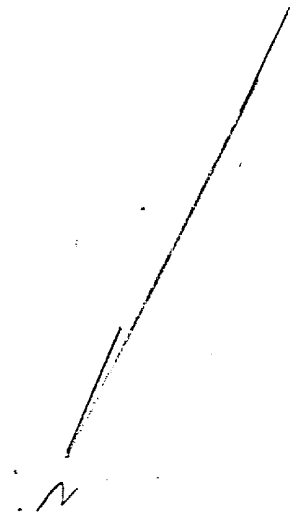
LOVR/dg



Preventers and spools are to have
through bore of 8" - 3000# PSI or larger.

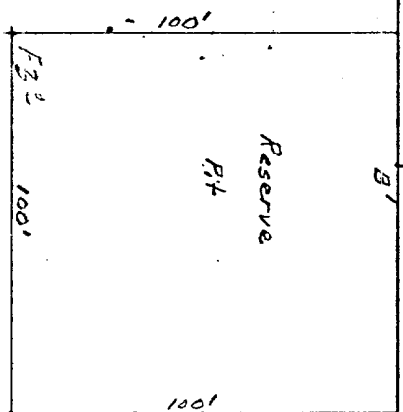


P.O. DRAWER 570 (505) 325-1841 FARMINGTON, NEW MEXICO 87401

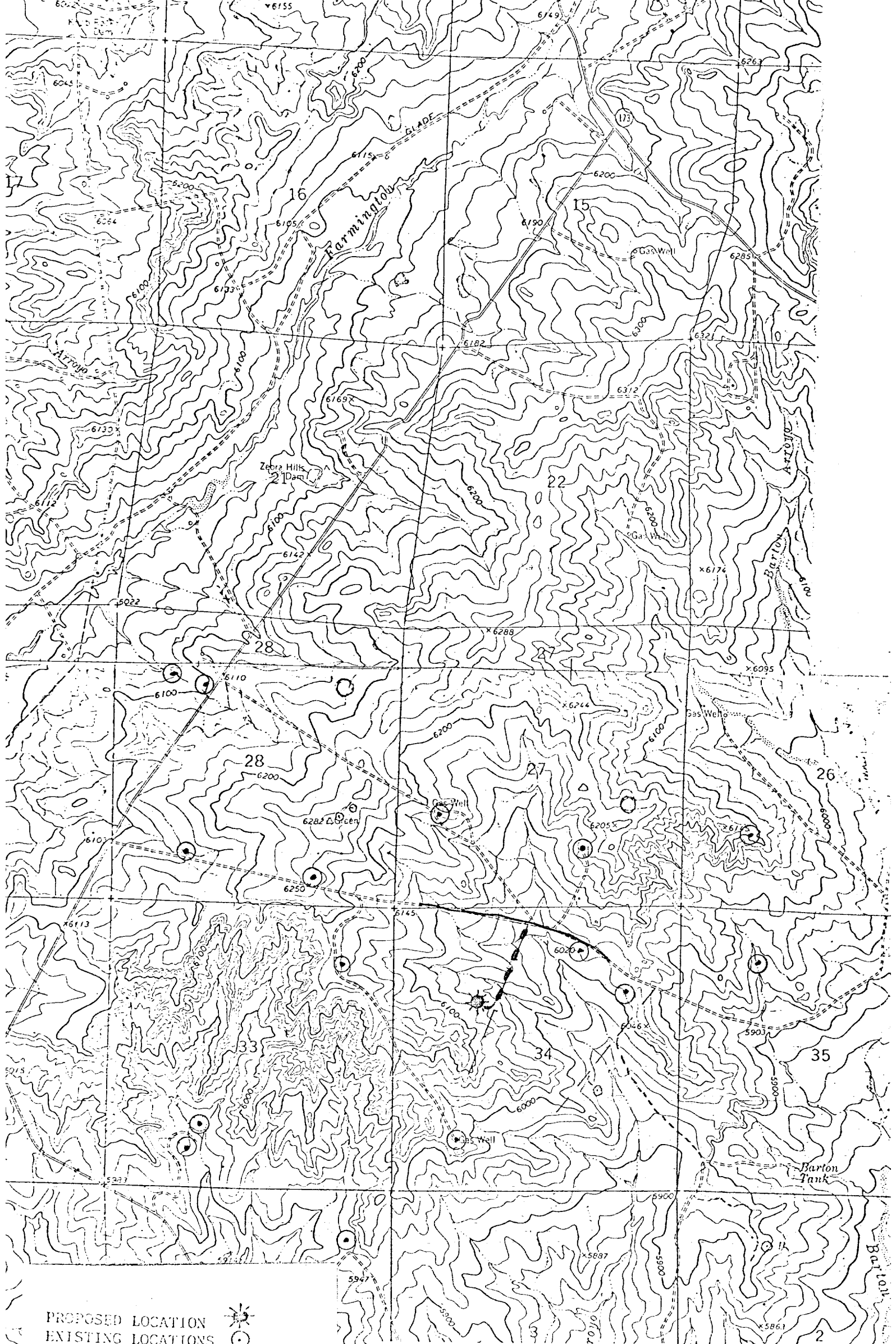


Vert. 1"=90'	A - A'	℄	Horiz. 1"=100'
6070			
6050			
6050			
6040			

B-B'		E	
6070			
6066			
6056			
6049			

[illegible][illegible]

KERR LAND SURVEYING
Date: 11-10-79



PROPOSED LOCATION
EXISTING LOCATIONS
PROPOSED ROAD
EXISTING ROADS

Vicinity Map for
SOUTHLAND ROYALTY CO. #7A THOMPSON
1780'ENL 1570'ENL Sec 34-T31N-R12W
SAN JUAN COUNTY, NEW MEXICO