

UNITED STATES
DEPARTMENT OF THE INTERIOR
GEOLOGICAL SURVEY

APPLICATION FOR PERMIT TO DRILL, DEEPEN, OR PLUG BACK

1a. TYPE OF WORK

DRILL ☒DEEPEN ☐PLUG BACK ☐

b. TYPE OF WELL

OIL
WELL ☐GAS
WELL ☒

OTHER

SINGLE
ZONE ☒MULTIPLE
ZONE ☐

2. NAME OF OPERATOR

Southland Royalty Company

3. ADDRESS OF OPERATOR

P. O. Drawer 570, Farmington, New Mexico 87401

4. LOCATION OF WELL (Report location clearly and in accordance with any State requirements.*)

At surface

1845' FSL & 1470' FEL

At proposed prod. zone

14. DISTANCE IN MILES AND DIRECTION FROM NEAREST TOWN OR POST OFFICE*

8 miles Northwest of Aztec, New Mexico 87410

15. DISTANCE FROM PROPOSED*

LOCATION TO NEAREST
PROPERTY OR LEASE LINE, FT.
(Also to nearest drlg. unit line, if any)18. DISTANCE FROM PROPOSED LOCATION*
TO NEAREST WELL, DRILLING COMPLETED,
OR APPLIED FOR, ON THIS LEASE, FT.

16. NO. OF ACRES IN LEASE

17. NO. OF ACRES ASSIGNED
TO THIS WELL
E/320.00

19. PROPOSED DEPTH

5016'

20. ROTARY OR CABLE TOOLS

Rotary

21. ELEVATIONS (Show whether DF, RT, GR, etc.)

5964' GR

22. APPROX. DATE WORK WILL START*

January 15, 1979

23.

PROPOSED CASING AND CEMENTING PROGRAM

SIZE OF HOLE	SIZE OF CASING	WEIGHT PER FOOT	SETTING DEPTH	QUANTITY OF CEMENT
12-1/4"	9-5/8"	36#	200'	125 cu. ft.
8-3/4"	7"	20#	2576'	293 cu. ft.
6-1/4"	4-1/2"	10.5#	2426'-5016'	452 cu. ft.
	2-3/8"	4.7#	5016'	

Surface formation is Nacimiento.

Top of Ojo Alamo sand is at 1276'.

Top of Pictured Cliffs sand is at 2326'.

Fresh water mud will be used to drill from surface to intermediate casing point.

An air system will be used to drill from intermediate casing point to total depth.

It is anticipated that a Gamma Ray Induction and a Gamma Ray Density log will be run at total depth.

No abnormal pressures or poisonous gases are anticipated in this well.

It is expected that this well be drilled before April 15, 1979. This depends on time required for approvals, rig availability and the weather.

Gas is dedicated.

IN ABOVE SPACE DESCRIBE PROPOSED PROGRAM: If proposal is to deepen or plug back, give data on present productive zone and proposed new productive zone. If proposal is to drill or deepen directionally, give pertinent data on subsurface locations and measured and true vertical depths. If blowout preventer program, if any.

24. SIGNED [Signature] TITLE District Production Manager DATE December 5, 1978

(This space for Federal or State office use)

PERMIT NO. _____ APPROVAL DATE _____

APPROVED BY _____ TITLE _____ DATE _____
CONDITIONS OF APPROVAL, IF ANY:

ak Frank

*See Instructions On Reverse Side

NMDC

RECEIVED
DEC 14 1978
GEOLOGICAL SURVEYDEC 13 1978
OIL CON. COM.
DIST. 3

NEW MEXICO OIL CONSERVATION COMMISSION
WELL LOCATION AND ACREAGE DEDICATION PLAT

Form C-102
Supersedes C-128
Effective 1-1-65

All distances must be from the outer boundaries of the Section.

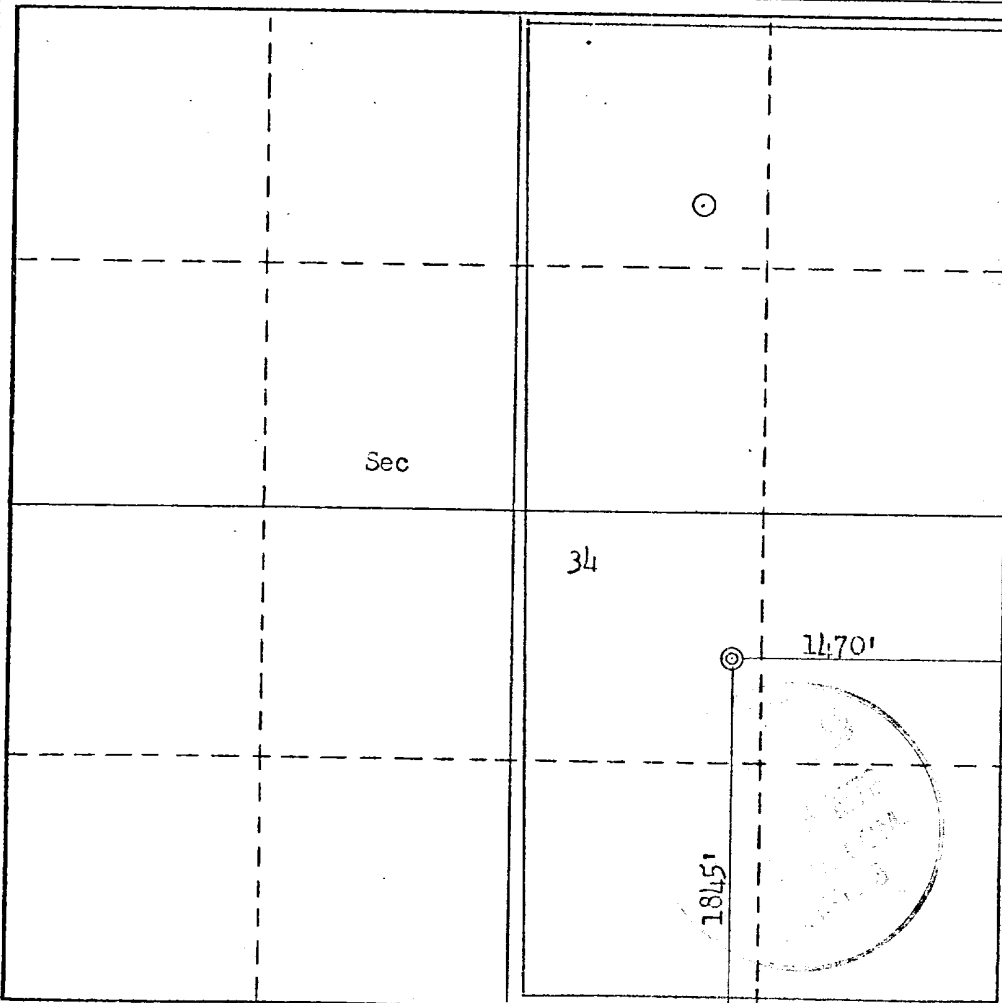
Operator SOUTHLAND ROYALTY COMPANY			Lease THOMPSON		Well No. 3A
Unit Letter J	Section 34	Township 31N	Range 12W	County San Juan	
Actual Footage Location of Well: 1845 feet from the South line and 1470 feet from the East line					
Ground Level Elev. 5964	Producing Formation Mesa Verde		Pool Blanco	Dedicated Acreage: 320.00 Acres	

1. Outline the acreage dedicated to the subject well by colored pencil or hachure marks on the plat below.
2. If more than one lease is dedicated to the well, outline each and identify the ownership thereof (both as to working interest and royalty).
3. If more than one lease of different ownership is dedicated to the well, have the interests of all owners been consolidated by communitization, unitization, force-pooling, etc?

☐ Yes ☐ No If answer is "yes," type of consolidation _____

If answer is "no," list the owners and tract descriptions which have actually been consolidated. (Use reverse side of this form if necessary.) _____

No allowable will be assigned to the well until all interests have been consolidated (by communitization, unitization, forced-pooling, or otherwise) or until a non-standard unit, eliminating such interests, has been approved by the Commission.



CERTIFICATION

I hereby certify that the information contained herein is true and complete to the best of my knowledge and belief.

Name _____
Position
District Production Manager
Company
Southland Royalty Company
Date
December 5, 1978

I hereby certify that the well location shown on this plat was plotted from field notes of actual surveys made by me or under my supervision, and that the same is true and correct to the best of my knowledge and belief.

Date Surveyed
November 8, 1978
Registered Professional Engineer
and/or Land Surveyor
Fred B. Kerrigan
Certificate No. _____

DRILLING SCHEDULE - THOMPSON #3A

Location: 1845' FSL & 1470' FEL, Section 34, T31N, R12W

Field: San Juan County, New Mexico

Blanco Mesaverde

Elevation:

5964' GR

Geology:

Formation Tops:	Ojo Alamo	1276'	Cliff House	3916'
	Fruitland	2026'	Point Lookout	4666'
	Pictured Cliffs	2326'	Total depth	5016'*(Add 50' if hole gets wet)
	Intermediate TD	2576'		

Logging Program: GR-Density and GR-Induction at total depth.

Coring Program: None

Natural Gauges: Gauge at last connection above Cliff House, Point Lookout and total depth.

Gauge any increase in gas flow.

Drilling:

Contractor:

Tool Pusher:

SRC Representative:

SRC Ans. Service: 325-1841

Dispatch Number: 325-7391

Mud Program: Fresh water mud from surface to Intermediate total depth.
Air from intermediate to total depth.

Materials:

Casing Program:	Hole Size	Depth	Casing Size	Wt. & Grade
	12-1/4"	200'	9-5/8"	36# K-55
	8-3/4"	2576'	7"	20# K-55
	6-1/4"	2426'-6016'	4-1/2"	10.5# K-55

Cementing:

9-5/8" surface casing: 125 cu. ft. (105 sxs) of Class "B" with 1/4# gel flakes per sack and 3% CaCl₂. (100% excess)

7" intermediate casing: 293 cu. ft. (160 sxs) of 50/50 Class "B" Poz with 6% gel. Mix with 7.2 gals water per sx to weigh 12.85 ppg. Tail in with 50 sxs of Class "B" with 2% CaCl₂. If lost circulation occurs, add 1/4# celloflake per sx. (50% excess to cover Ojo Alamo.)

4-1/2" liner: 452 cu. ft. Precede cement with 20 bbls gelled water. Cement with 305 sxs of 50/50 Class "B" Poz with 6% gel, 1/4# celloflake and 6% halad 9. Mix water with 7.2 gals water per sx to weigh 12.85 ppg. (70% excess to circulate liner (360 sxs)



Southland Royalty Company

December 5, 1978

United States Geological Survey
P. O. Box 959
Farmington, New Mexico

Attention: Mr. P. T. McGrath

Re: Blowout Preventer Plan

Dear Sir:

All drilling and completion rigs will be equipped with 6" or larger double hydraulic blowout preventers and a hydraulic closing unit with steel lines.

The preventer is 3000# working pressure and 6000# test.

All crews will be thoroughly trained in the operation of this preventer. The preventer will be tested frequently enough to insure proper operation.

Yours truly,

L. O. Van Ryan
District Production Manager

LOVR/dg



Southland Royalty Company

December 5, 1978

United States Geological Survey
P. O. Box 959
Farmington, New Mexico

Attention: Mr. P. T. McGrath

Dear Sir:

Enclosed please find map showing existing roads and planned access roads to Southland Royalty Company's Thompson #3A well. The locations of tank batteries and flow lines will be on location with well. A burn pit will be provided for disposal of trash. Cuttings, drilling fluid and produced fluids will be put into the reserve pit and properly disposed of depending on amount and type of fluids.

Contractor will furnish restroom facilities on location.

There will be no air strips or camps.

Also, enclosed is a location layout showing approximate location of rig, pits and pipe racks and cut required to build this location.

Water supply will be the Farmer's Ditch. All water will be transported by truck and stored on location.

The location will be restored according to Bureau of Land Management standards. This work will begin when all related construction is finished.

Mr. Max Larson will be Southland Royalty Company's field representative supervising these operations.

Yours truly,

L. O. Van Ryan
District Production Manager

LOVR/DG



Southland Royalty Company

United States Geological Survey
P. O. Box 959
Farmington, New Mexico 87401

Attention: Mr. P. T. McGrath

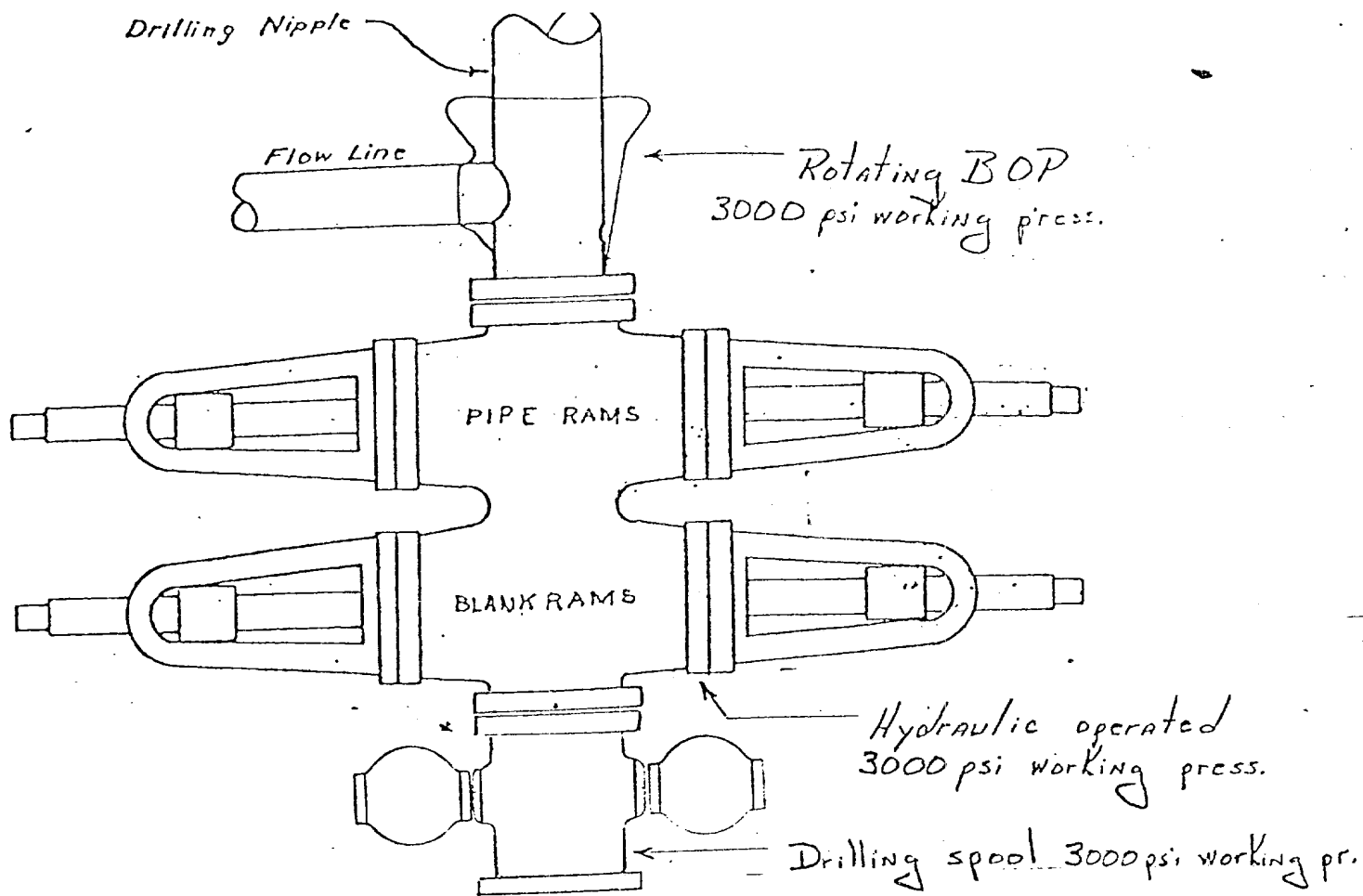
Dear Sir:

I hereby certify that I, or persons under my direct supervision, have inspected the proposed drillsite and access route; that I am familiar with the conditions which presently exist; that the statements made in this plan are, to the best of my knowledge, true and correct; and, that the work associated with the operations proposed herein be performed by Southland Royalty Company and its contractors and subcontractors in conformity with this plan and the terms and conditions under which it is approved.

Date: December 5, 1978

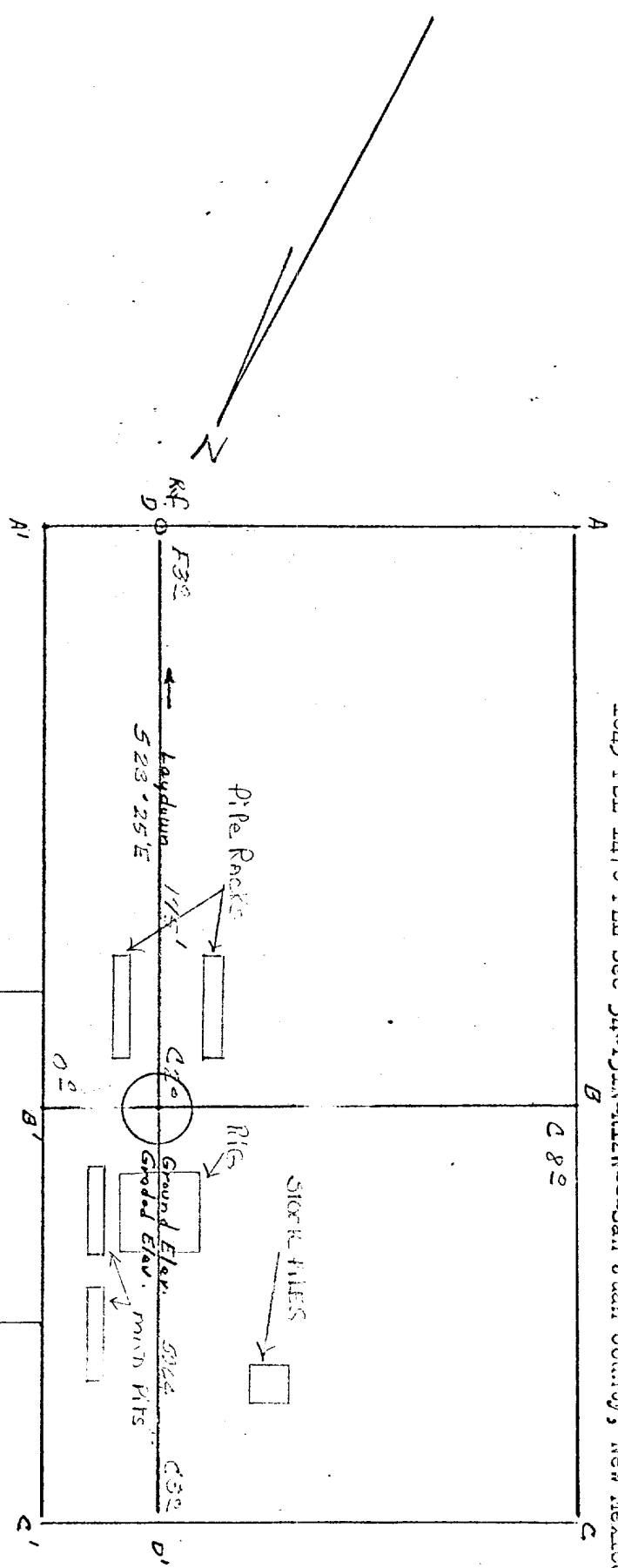
Name: C. C. Pearson

Title: District Engineer



Preventers and spools are to have through bore of 8" - 3000# PSI or larger.

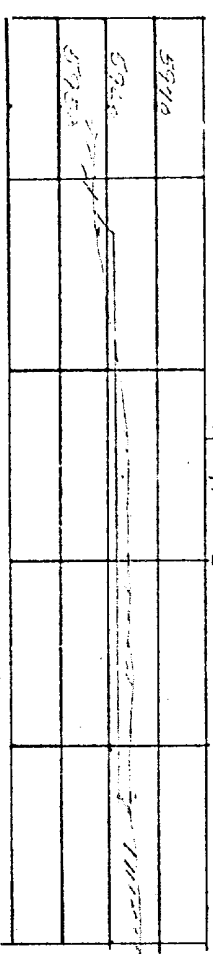
Location Profile for
SOUTHLAND ROYALTY CO. #3A THOMPSON
1845' FSL 1470' FEL Sec 34-T31N-R12W---San Juan County, New Mexico



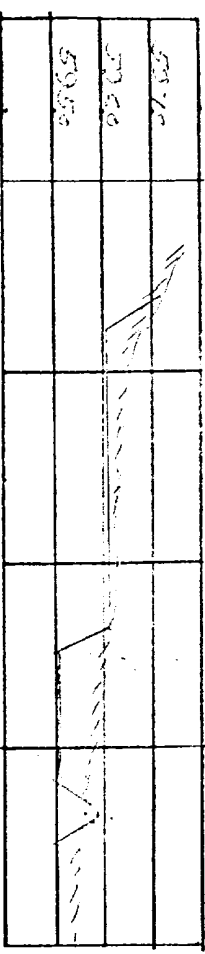
Vert. 1"=40'

A-A' &

Horiz. 1"=100'



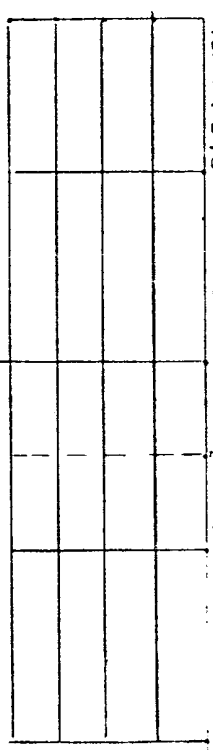
B-B' &



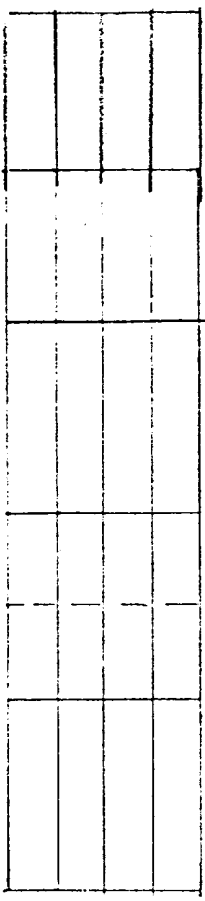
Vert. 1"=40'

C-C' &

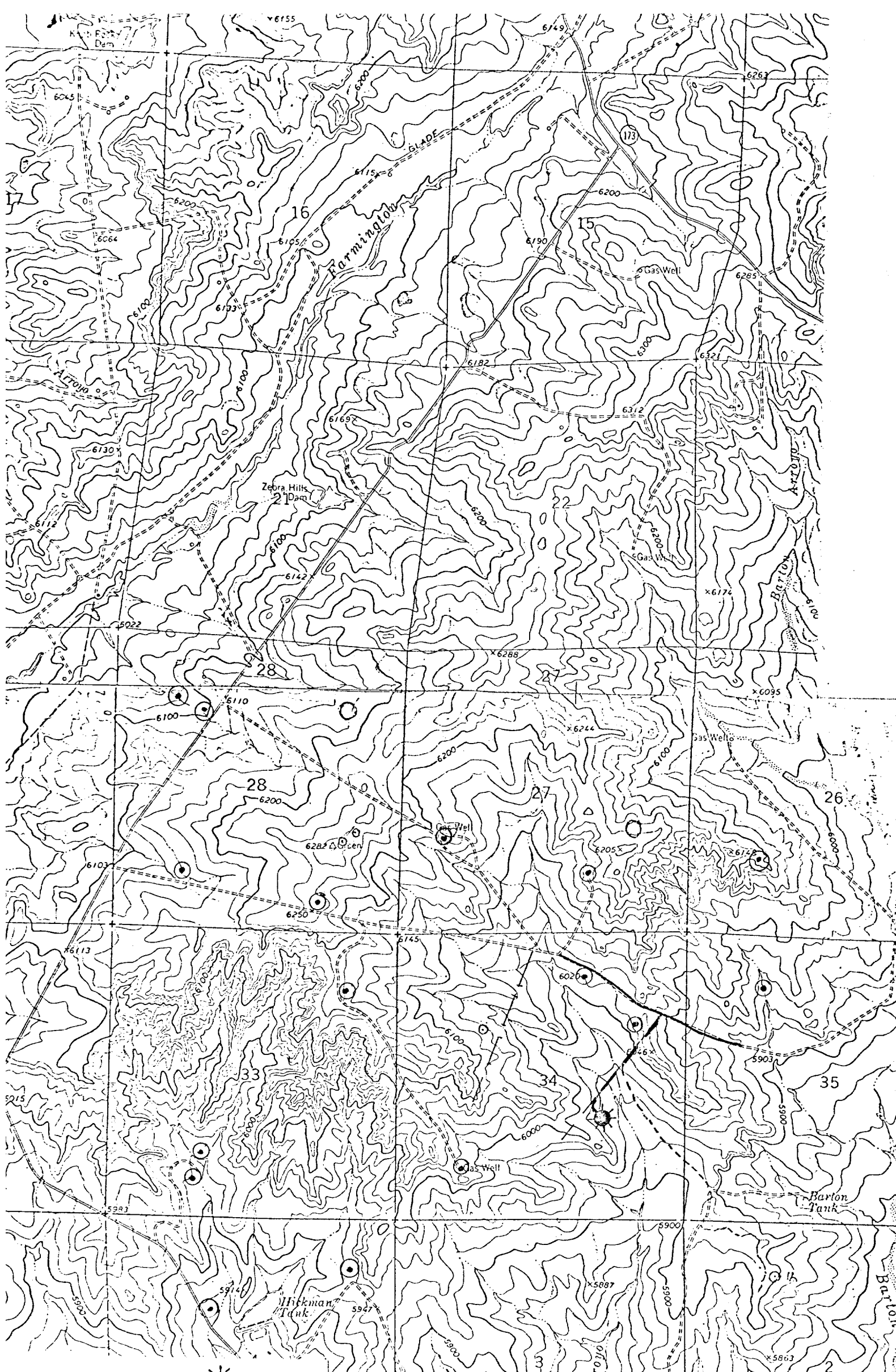
Horiz. 1"=100'



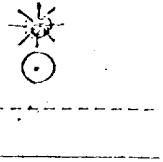
D-D' &



KERR LAND SURVEYING
Date: 11-8-78



PROPOSED LOCATION
EXISTING LOCATIONS
PROPOSED ROAD
EXISTING ROADS



Vicinity Map for
SOUTHLAND ROYALTY CO. #3A THOMPSON
1845' FSL 1170' FEL Sec 34-T31N-R12W
SAN JUAN COUNTY, NEW MEXICO

