

UNITED STATES
DEPARTMENT OF THE INTERIOR
GEOLOGICAL SURVEY

APPLICATION FOR PERMIT TO DRILL, DEEPEN, OR PLUG BACK

1a. TYPE OF WORK

DRILL ☒DEEPEN ☐PLUG BACK ☐

b. TYPE OF WELL

OIL
WELL ☒GAS
WELL ☐

OTHER

SINGLE
ZONE ☒MULTIPLE
ZONE ☐

2. NAME OF OPERATOR

ENERGETICS, INC.

3. ADDRESS OF OPERATOR

333 W. Hampden Ave., Suite 1010, Englewood, Color 80110

4. LOCATION OF WELL (Report location clearly and in accordance with any State requirements.)*

At surface

580' FNL & 1715' FWL

At proposed prod. zone

14. DISTANCE IN MILES AND DIRECTION FROM NEAREST TOWN OR POST OFFICE*

Same

15. DISTANCE FROM PROPOSED*
LOCATION TO NEAREST
PROPERTY OR LEASE LINE, FT.
(Also to nearest drlg. unit line, if any)

16. NO. OF ACRES IN LEASE

640

18. DISTANCE FROM PROPOSED LOCATION*
TO NEAREST WELL, DRILLING, COMPLETED,
OR APPLIED FOR, ON THIS LEASE, FT.

19. PROPOSED DEPTH

2700

21. ELEVATIONS (Show whether DF, RT, GR, etc.)

5746' g.l.

23.

PROPOSED CASING AND CEMENTING PROGRAM

SIZE OF HOLE	SIZE OF CASING	WEIGHT PER FOOT	SETTING DEPTH	QUANTITY OF CEMENT
12 1/4	8 5/8	20	100	100 sk
7 7/8	5 1/2	14	2500	330 sk
4 3/4	Open Hole		2500-2700	

(See Attachments)

DEC 18 1978
OIL CON. COM.
DIST. 3

IN ABOVE SPACE DESCRIBE PROPOSED PROGRAM: If proposal is to deepen or plug back, give data on present productive zone and proposed new productive zone. If proposal is to drill or deepen directionally, give pertinent data on subsurface locations and measured and true vertical depths. Give blowout preventer program, if any.

24.

SIGNED

John Alexander

TITLE

Agent

DATE

12/5/78

(This space for Federal or State office use)

PERMIT NO.

APPROVAL DATE

APPROVED BY

TITLE

DATE

CONDITIONS OF APPROVAL, IF ANY:

ok Frank

**NEW MEXICO OIL CONSERVATION COMMISSION
WELL LOCATION AND ACREAGE DEDICATION PLAT**

Form C-102
Supersedes C-128
Effective 1-1-65

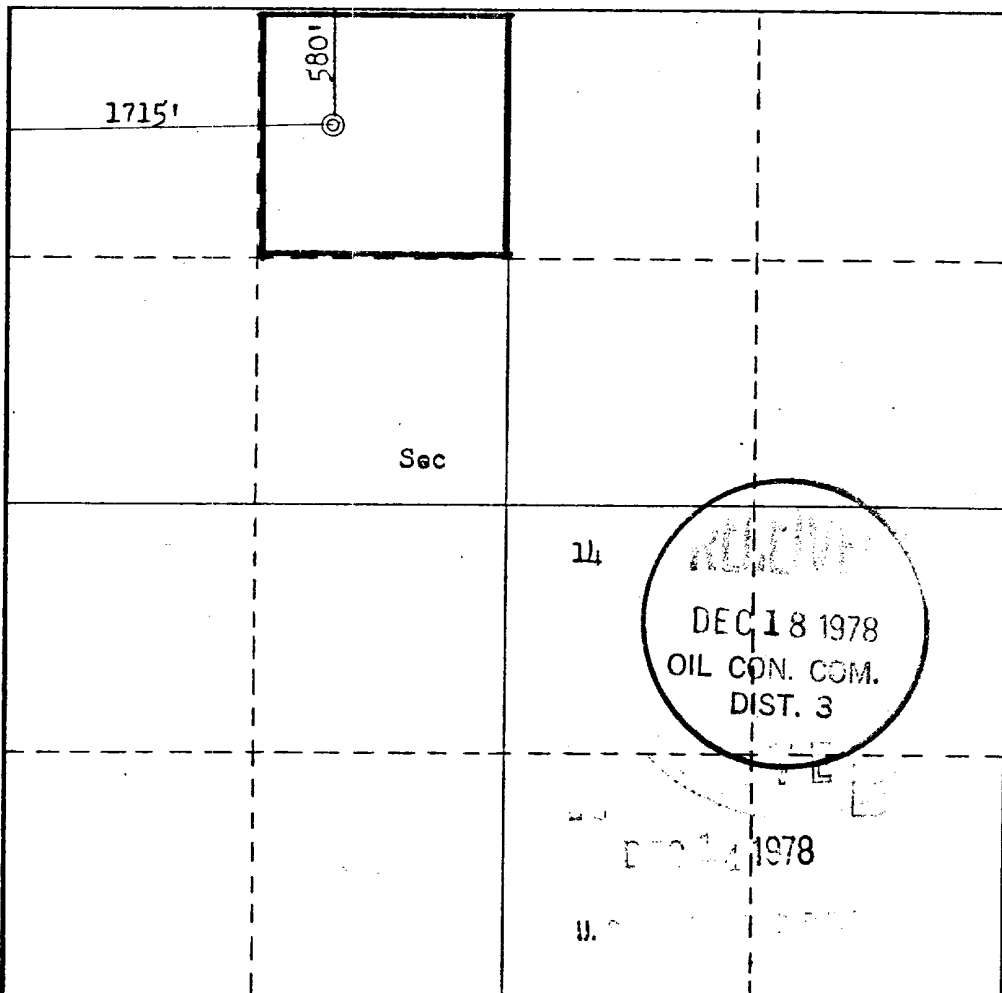
All distances must be from the outer boundaries of the Section.

Operator ENERGETICS, INC.			Lease UTE 14		Well No. 21
Unit Letter C	Section 14	Township 31N	Range 15W	County San Juan	
Actual Footage Location of Well: 580 feet from the North line and 1715 feet from the West line					
Ground Level Elev. 5746	Producing Formation Gallup		Pool Verde Gallup		Dedicated Acreage: 40 Acres

1. Outline the acreage dedicated to the subject well by colored pencil or hachure marks on the plat below.
 2. If more than one lease is dedicated to the well, outline each and identify the ownership thereof (both as to working interest and royalty).
 3. If more than one lease of different ownership is dedicated to the well, have the interests of all owners been consolidated by communitization, unitization, force-pooling, etc?
- ☐ Yes ☐ No If answer is "yes," type of consolidation _____

If answer is "no," list the owners and tract descriptions which have actually been consolidated. (Use reverse side of this form if necessary.) _____

No allowable will be assigned to the well until all interests have been consolidated (by communitization, unitization, forced-pooling, or otherwise) or until a non-standard unit, eliminating such interests, has been approved by the Commission.



CERTIFICATION

I hereby certify that the information contained herein is true and complete to the best of my knowledge and belief.

John A. [Signature]
Name

Agent

Position

Energetics, Inc.

Company

December 8, 1978

Date

I hereby certify that the well location shown on this plat was plotted from field notes of actual surveys made by me or under my supervision, and that the same is true and correct to the best of my knowledge and belief.

Date Surveyed
November 20, 1978

Registered Professional Engineer
and/or Land Surveyor

[Signature]
Fred B. Kerr Jr.

Certificate No. **350**

ENERGETICS, INCORPORATED

FORMATION INFORMATION AND DRILLING PRACTICES

WELL:
Ute 14 #21

LOCATION:
580' FNL & 1715' FWL
Sec. 14-T31N-R15W
San Juan County, NM

LEASE NO.:
Noo-C-1420-1720

DEC 14 1978

U.

1. SURFACE FORMATION

Menefee

2. ESTIMATED TOPS OF IMPROTANT GEOLOGIC MARKERS

Point Lookout	795
Mancos	1179
Gallup	2541

3. HYDRO CARBON, WATER OR MINERAL BEARING FORMATION

2500' Oil

4. PROPOSED CASING PROGRAM

0-100'	8 5/8, 20#, new casing. Cement with 100 sk. Class B + 2% CaCl_2 .
0-2500	5½, 14#, new casing. Cement with 230 sk. Halliburton Light with 6¼ lb. Gilsonite/sk. followed by 100 sk. Class B+2% CaCl_2 with 6¼ lb. Gilsonite/sk.
2500-2700	Open hole (drill with Cable tool)

5. SPECIFICATIONS FOR PRESSURE CONTROL EQUIPMENT

The attached schematic shows the type of blow out preventer to be used while drilling. The unit will be tested to 200 psi as soon as possible after its installation on the surface pipe. Testing will be done with the rig pump. This is a manual type preventer, and its operation will be manually checked when practical.

6. DRILLING FLUIDS

Depth	Type	Viscosity	Weight	Fluid Loss
0-100	Gel-Lime	35-55	8.9-9.2	NC
100-2500	Gel-Chem	30-40	8.6-9.5	10
2500-2700	Water			

7. AUXILIARY EQUIPMENT

- A. Bit float
- B. Full opening valve for stabbing in drill pipe when the kelly is not in use.

8. LOGGING - CORING - DRILL STEM TESTING

Logging: Induction Electric Log

Coring: None

Drill Stem Testing: None

DEC 14 1978

U. S.

9. ABNORMAL TEMPERATURES, PRESSURES, OR HAZARDOUS CONDITIONS

None expected.

10. STARTING DATE

Anticipated starting date is February 5, 1979. Approximately 15 days will be needed to build roads and location and drill the well to total depth. If commercial, completion will commence immediately and require approximately 7 days to complete.

DEC 14 1978

U.S.

ENERGETICS, INCORPORATED

SURFACE DEVELOPMENT PLAN

WELL:
Ute 14 #21

LOCATION:
580' FNL & 1715' FWL
Sec. 14-T31N-R15W
San Juan County, NM

LEASE NO.:
Noo-C-1420-1720

1978

U. S.

1. EXISTING ROADS (Shown in green)

The attached topographic map shows all existing roads within one mile of the proposed location. Access will be made to an existing road 100' west of the location.

Some existing roads are in poor condition and will have to be upgraded to handle normal drilling activity traffic.

2. PLANNED ACCESS ROAD (Shown in red)

The planned access road will be approximately 100' long and 20' wide. Maximum grade will be 5%. No turnouts or culverts will be required. Water bars will be used to aid drainage and prevent erosion. No surfacing material will be required. No gates, cattle guards, or fences will be crossed. No cuts or fills should be required.

3. LOCATION OF EXISTING WELLS

All wells (water, abandoned, disposal, and drilling) are shown and so labeled on the attached section layout.

4. LOCATION OF TANK BATTERIES, PRODUCTION FACILITIES AND PRODUCTION, GATHERING AND SERVICE LINES

All production facilities are to be contained within the proposed location. Energetics does not own or control any such facilities in the area.

5. LOCATION AND TYPE OF WATER SUPPLY

Water for drilling will be trucked from the San Juan River located 15 miles southeast of location. This water is not on federal land.

6. SOURCE OF CONSTRUCTION MATERIAL

Any construction material required for road or location will be excess material accumulated during building of such sites.

7. METHODS OF HANDLING WASTE DISPOSAL

(Refer to attached well site layout)
All burnable material will be burned in the trash pit when conditions permit. All nonburnable material (drilling fluids, cuttings, chemicals, etc) will be held in the reserve pit and buried when dry. Any oil produced while drilling will be trucked from the location prior to leaving the pit to dry. Pits will be fenced during dryout time, the completely back filled with dirt prior to preparing the location for production or abandonment.

8. ANCILLARY FACILITIES

No ancillary facilities are planned.

DEC 14 1978

9. WELL SITE LAY OUT

The attached lay out shows the drilling rig with all facilities. Cut and fill required is also indicated.

10. PLANS FOR RESTORATION OF SURFACE

Restoration of well site and access road will begin within 90 days of well completion, weather permitting.

Should the well be abandoned, the drilling site will be reshaped to its approximate former contour. The access road will be plowed and leveled. Both site and road will have top soil replaced and will be reseeded when germination can occur.

Should the well be commercial, that portion of the location, not needed for operation, will be repaired as above. The portion needed for daily production operations, and the access road, will be maintained in good repair.

In either case, clean up of the site will include burning any safely burnable material, filling of all pits, carrying away of all nonburnable material and chemicals that can not be buried. Any oil that has accumulated on the pits will be trucked away.

11. OTHER INFORMATION

General topography of the area may be seen on the attached map.

The drilling site is flat and is covered with sage brush and other native grasses. There are no creeks, rivers or ponds in the area. The soil is sandy loam. Small animals and sheep inhabit the area.

The surface is administered by the Bureau of Indian Affairs, and belongs to the Ute Mountain Tribe.

There are no occupied dwellings in the area.

There are no archaeological or cultural sites visible on the location. The archaeologist report is forthcoming.

12. John Alexander
3E Company, Inc.
P.O. Box 190
Farmington, NM 87401
Phone: 505-327-4020

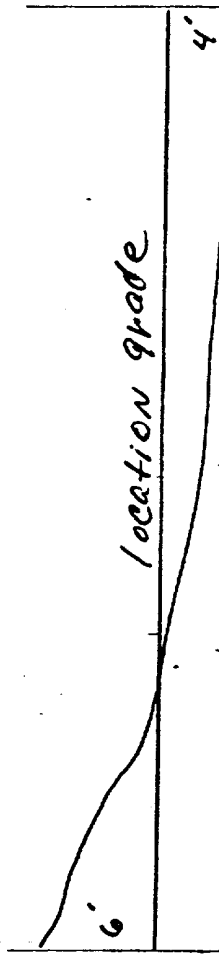
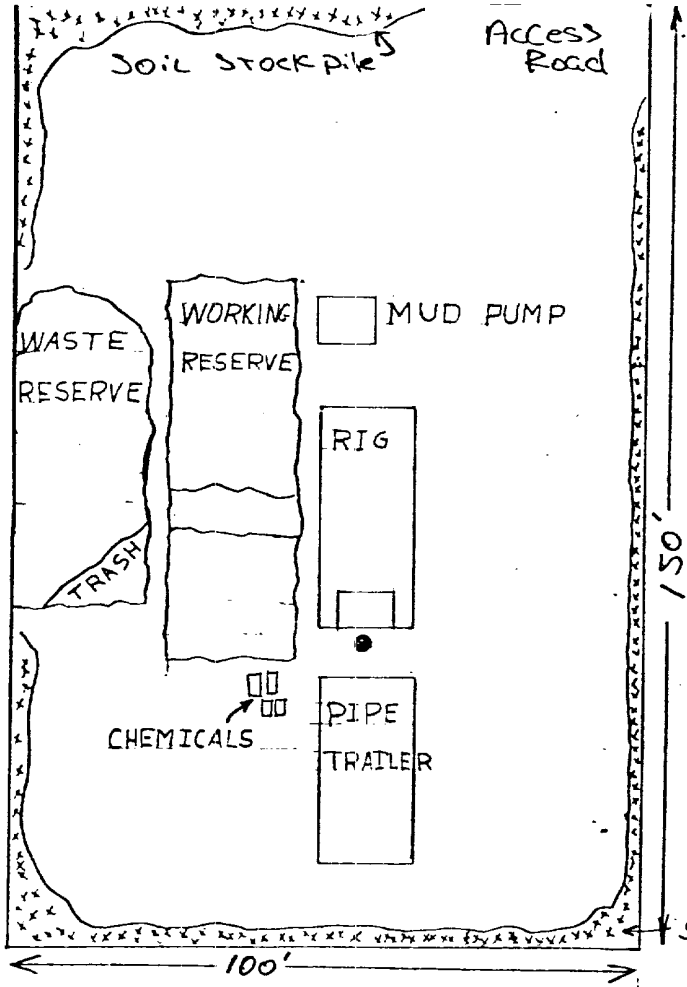
DEC 14 1978

U.

13. I hereby certify that I or persons under my direct supervision, have inspected the proposed drill site and access route; that I am familiar with the conditions which presently exist; that the statements made in the plan are to the best of my knowledge, true and correct; and, that the work associated with the operations proposed herein will be performed by Energetics, Incorporated and its contractors and sub-contractors in conformity with this plan and the terms and conditions under which it is approved.

December 5, 1978


John Alexander



SOIL MATERIAL STOCKPILE
Vertical Scale 1" = 10'

PLAN VIEW 1" = 30'
ALL PITS - EARTHEN

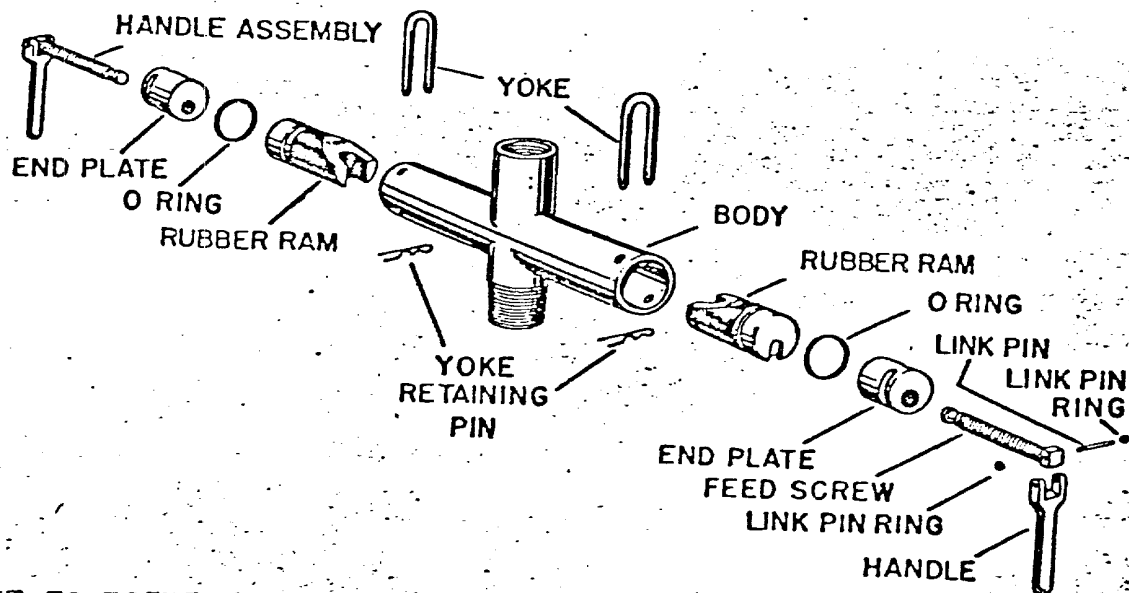
WELL SITE LAYOUT
ENERGETICS, INC.
UTE 14 #21



DEC 2 1978

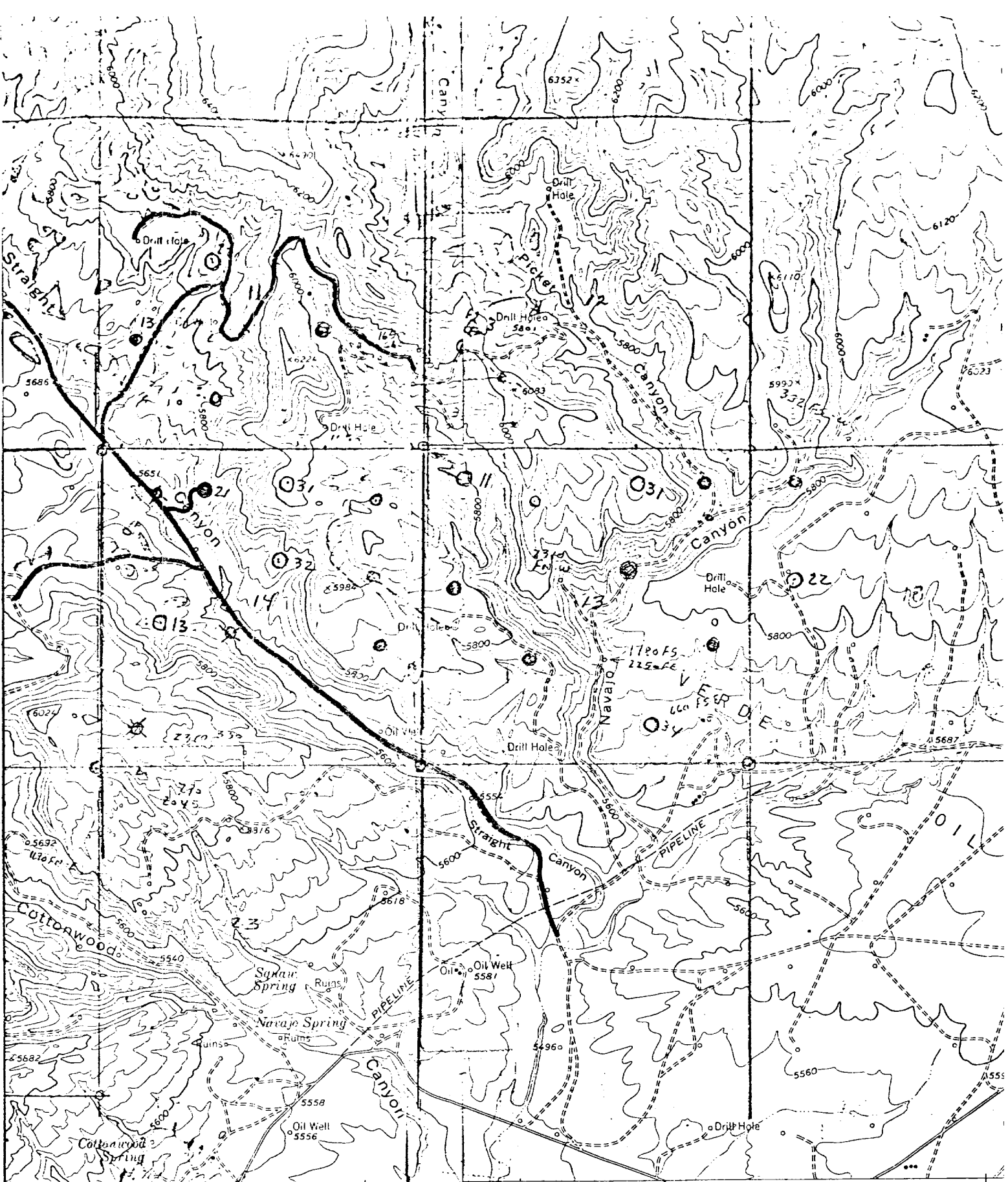
U.

BLOWOUT PREVENTERS



ATTACHMENT TO POINT 5
API SERIES 6" 600

1978



732 10 MI. TO U.S. 560 733000m. E. 108°22'30" 13 MI. TO U.S. 550 736 135

Mapped, edited, and published by the Geological Survey

Control by USGS and USC&GS

Topography by photogrammetric methods from aerial photographs taken 1958 and 1962. Field checked 1963

Polyconic projection. 1927 North American datum
 10,000-foot grids based on New Mexico coordinate system,
 west zone and Colorado coordinate system, south zone
 1000-meter Universal Transverse Mercator grid ticks,
 zone 12, shown in blue

Where omitted, land lines have not been established

Fine red dashed lines indicate selected fence lines

UTM GRID
 DECLIN

ROAD CLASSIFICATION

Light-duty ————— Unimproved dirt —————

HEIFER POINT, N. MEX. - COLO.

N3652 5 - W10822 5/7.5

1963

AMS 4357 IV NW - SERIES V681

DEC 14 1978

Vicinity Map for
 ENERGETICS, INC. #21 UTE 14
 580'FNL 1715'FWL Sec 14-T31N-R15W
 SAN JUAN COUNTY, NEW MEXICO

30-045-233-9 12-18-78

F. Loc. 580/N; 1715/W Elev. 5746 GL Spd. Comp. TD PB

Casing S. @ W Sx. Int. @ W Sx. Pr. @ W Sx. T. @
Csg. Perf. Prod. Stim.

T
R
A
N
S

I.P. BO/D MCF/D After Hrs. SICP PSI After Days GOR Grav. Ist Del. s

TOPS	NITD	X	Well Log	TEST DATA							
Kirtland	C-103		Plat	X	Schd.	PC	Q	PW	PD	D	Ref.No.
Fruitland	C-104		Electric Log								
Pictured Cliffs			C-122								
Cliff House	Ditr		Dfo								
Menefee	Datr		Dac								
Point Lookout											
Mancos											
Gallup											
Sanostee											
Greenhorn											
Dakota											
Morrison											
Entrada											
	40										

P
o
o

Verde Gallup Co. SJ s 14 I 31N R 15W UO Oper. Energetics, Inc. Lse. Ute 14 No. 21

Ute 14 #21

C-14-31N-15W

Energetics, Inc.

Federal Building
701 Camino del Rio
Durango, Colorado 81301

July 20, 1979

Energetics, Inc.
333 W. Hampton Avenue
Suite 1010
Englewood, CO 80110

Gentlemen:

By letter received July 19, 1979, your agent, 3E Company, advised that you would not drill the following wells located on Ute Mountain Tribal oil and gas leases in San Juan County, New Mexico:

<u>Well No.</u>	<u>Location</u>	<u>Lease No.</u>
11 Ute 1319	NW1/4 13-31N-14W	MOO-C-1420-1716
22 Ute 1319	SE1/4 13-31N-14W	MOO-C-1420-1716
33 Ute 1319	NW1/4 13-31N-14W	MOO-C-1420-1716
42 Ute 1319	SE1/4 13-31N-14W	MOO-C-1420-1716
35 Ute 1319	NW1/4 13-31N-14W	MOO-C-1420-1716
22 Ute 11	SE1/4 11-31N-15W	MOO-C-1420-1717
11 Ute 13	NW1/4 13-31N-15W	MOO-C-1420-1719
31 Ute 13	NW1/4 13-31N-15W	MOO-C-1420-1719
34 Ute 13	SW1/4 13-31N-15W	MOO-C-1420-1719
13 Ute 14	NW1/4 14-31N-15W	MOO-C-1420-1720
-21 Ute 14	NE1/4 14-31N-15W	MOO-C-1420-1720
23 Ute 14	NESW 14-31N-15W	MOO-C-1420-1720
31 Ute 14	NENE 14-31N-15W	MOO-C-1420-1720
32 Ute 14	SWNE 14-31N-15W	MOO-C-1420-1720
41 Ute 14	NENE 14-31N-15W	MOO-C-1420-1720
43 Ute 14	NESE 14-31N-15W	MOO-C-1420-1720

Applications for Permit to Drill have not been approved. Any construction of access roads and well pads will have to be restored to the satisfaction of the Bureau of Indian Affairs.

Applications for Permit to Drill are canceled this date and returned herewith unapproved. If at some later date you decide to drill wells at these locations, it will be necessary to file new applications.

Sincerely yours,
(Orig. 8867) C. A. BARRICK

Enclosures

Carl A. Barrick
Acting District Engineer

cc: 3E Company, Inc.
P. O. Box 190
Farmington, NM 87401

BIA, Towaac
NMOCD, Aztec

