

UNITED STATES
DEPARTMENT OF THE INTERIOR
BUREAU OF LAND MANAGEMENT

APPLICATION FOR PERMIT TO DRILL, DEEPEN, OR PLUG BACK

1a. TYPE OF WORK PLUG BACK	5. LEASE NUMBER SF-077648
1b. TYPE OF WELL GAS	6. IF INDIAN, ALL. OR TRIBE NAME
2. OPERATOR SOUTHLAND ROYALTY COMPANY	7. UNIT AGREEMENT NAME
3. ADDRESS & PHONE NO. OF OPERATOR P.O. BOX 4289 FARMINGTON, NM 87499 (505) 326-9700	8. FARM OR LEASE NAME DAVIS
4. LOCATION OF WELL 1840' FNL; 1110' FWL	9. WELL NO. 19
14. DISTANCE IN MILES FROM NEAREST TOWN	10. FIELD, POOL, OR WILDCAT BASIN FRUITLAND COAL
15. DISTANCE FROM PROPOSED LOCATION TO NEAREST PROPERTY OR LEASE LINE.	11. SEC. T. R. M OR BLK. SEC. 1, T31N, R12W
16. ACRES IN LEASE	12. COUNTY SAN JUAN
17. ACRES ASSIGNED TO WELL 310.79	13. STATE NM
18. DISTANCE FROM PROPOSED LOCATION TO NEAREST WELL DR. COMPL., OR APPLIED FOR ON THIS LEASE.	19. PROPOSED DEPTH 2875'
20. ROTARY OR CABLE TOOLS	21. ELEVATIONS (DF, FT, GR, ETC.) 6307' GL
22. APPROX. DATE WORK WILL START 04-15-90	23. PROPOSED CASING AND CEMENTING PROGRAM *SEE OPERATIONS
24. AUTHORIZED BY: <i>[Signature]</i> (CJS) REGULATORY AFFAIRS	RECEIVED APR 18 1990 OIL CON. DIV. DIST. 3

PERMIT NO. _____ APPROVAL DATE _____
APPROVED BY _____ TITLE _____ DATE _____

NOTE: THIS FORMAT IS ISSUED IN LIEU OF US BLM FORM 3160-3.

*Requires NMCCD approval for the
Cimarron Creek Location. NMCCD*

Held in 1994 for USC + Census

Lease # 500 (C)

APPROVED

APR 13 1990

Ken Townsend
AREA MANAGER

OFFICE OF THE
DIRECTOR
VIA AIR MAIL
JAN 10 1961

RECEIVED
JAN 10 1961

Submit to Appropriate—
District Office
State Leases - 4 copies
Fee Leases - 3 copies

State of New Mexico
Energy, Minerals and Natural Resources Department

Form C-182
Revised 1-1-89

OIL CONSERVATION DIVISION

P.O. Box 2088
Santa Fe, New Mexico 87504-2088

DISTRICT I

P.O. Box 1980, Hobbs, NM 88240

DISTRICT II

P.O. Drawer 00, Artesa, NM 88210

DISTRICT III

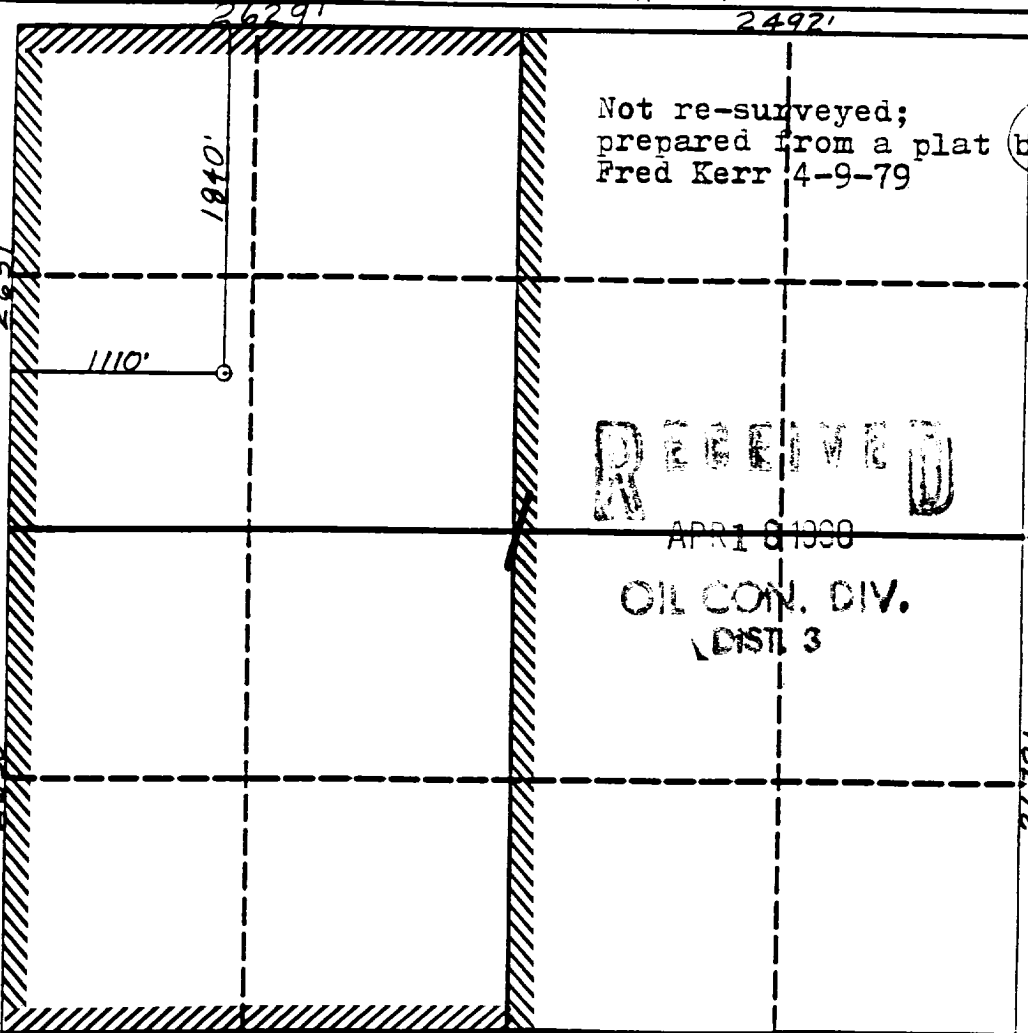
1000 Rio Brazos Rd., Aztec, NM 87410

WELL LOCATION AND ACREAGE DEDICATION PLAT

All Distances must be from the outer boundaries of the section

Operator Meridian Oil Inc.			Lease Davis (SF-077648)		Well No. 19
Unit Letter E	Section 1	Township 31 North	Range 12 West	County San Juan	
Actual Footage Location of Well: 1840 feet from the North line and 1110 feet from the West line					
Ground level Elev. 6307	Producing Formation Fruitland Coal		Pool Basin	Dedicated Acreage 310.79 Acres	

- Outline the acreage dedicated to the subject well by colored pencil or ink on the plat below.
- If more than one lease is dedicated to the well, outline each and identify the ownership thereof (both as to working interest and royalty).
- If more than one lease of different ownership is dedicated to the well, have the interest of all owners been consolidated by commutation, unification, force-pooling, etc.?
☐ Yes ☐ No If answer is "yes" type of consolidation _____
If answer is "no" list the owners and trust descriptions which have actually been consolidated. (Use reverse side of this form if necessary.)
No allowance will be assigned to the well until all interests have been consolidated (by commutation, unification, force-pooling, or otherwise) or until a non-standard unit, eliminating such interest, has been approved by the Division.



OPERATOR CERTIFICATION

I hereby certify that the information contained herein is true and complete to the best of my knowledge and belief.

Signature *Peggy Bradfield*

Peggy Bradfield

Printed Name

Regulatory Affairs

Position

Meridian Oil Inc.

Company

Date

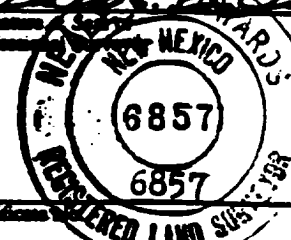
SURVEYOR CERTIFICATION

I hereby certify that the well location shown on this plat was plotted from field notes actual surveys made by me or under my supervision, and that the same is true and correct to the best of my knowledge and belief.

Date Surveyed

Signature *Neale J. Edwards*

Professional Seal



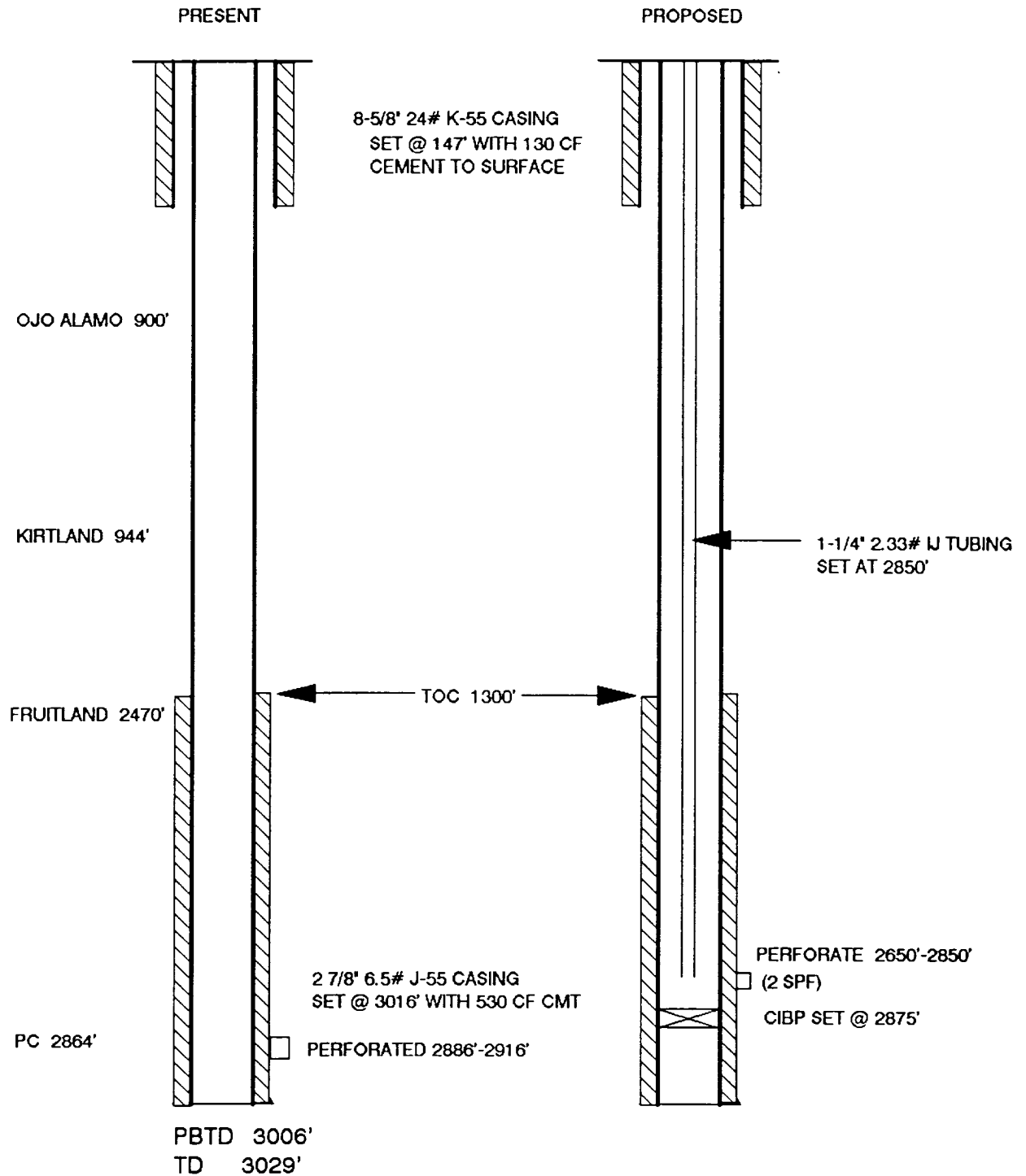
Neale J. Edwards

Davis #19
Procedure to Recomplete Fruitland Coal

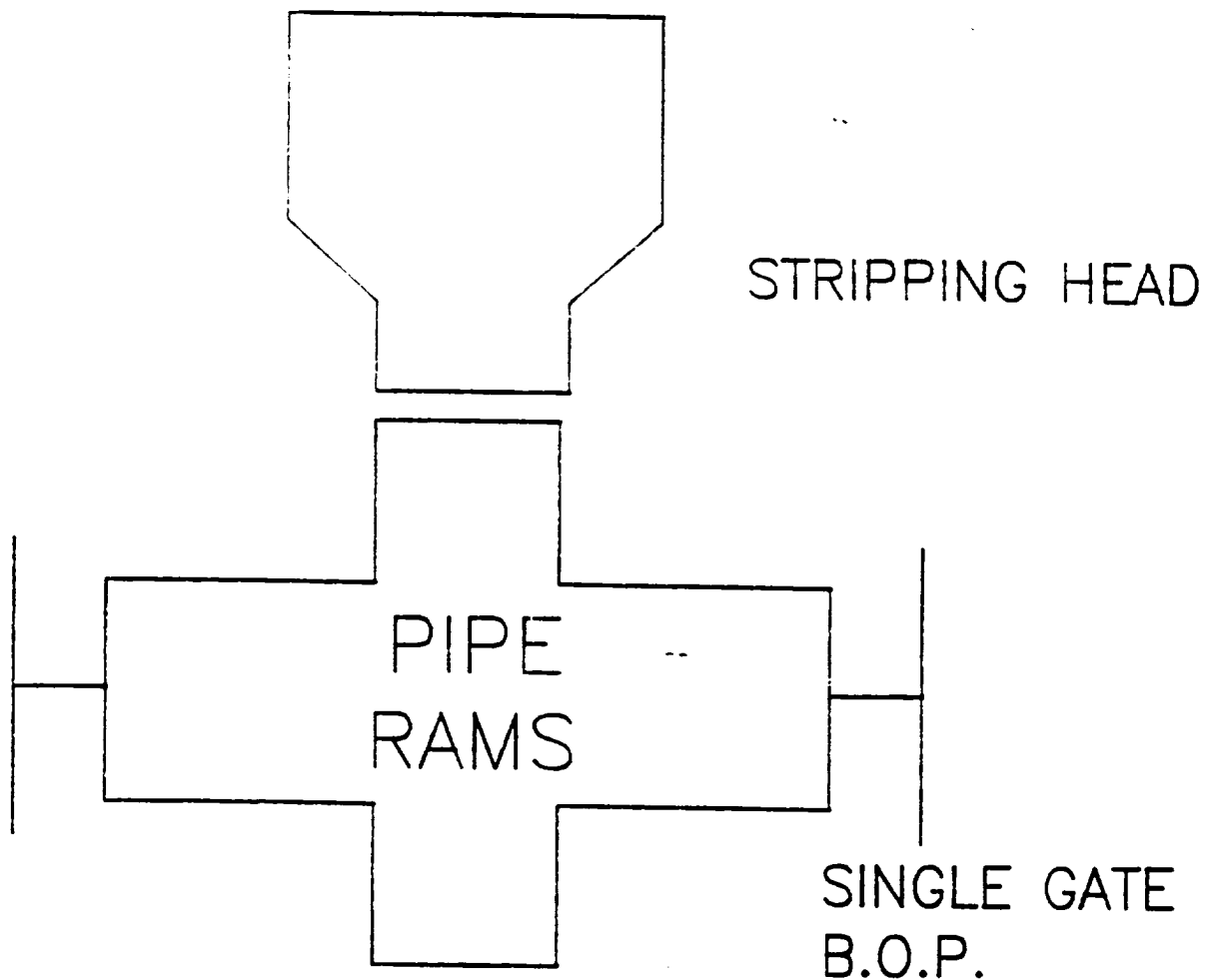
1. Check location anchors.
2. MOL and rig up daylight pulling unit with rip pump and blow tank.
3. Kill PC with water as needed.
4. Set cast iron bridge plug at 2875'.
5. Pressure test casing to 4000 psi for 15 minutes.
6. Perforate the Fruitland Coal interval.
7. Pick up retrievable bridge plug and packer. TIH on 1 13/16" drillpipe. Isolate each coal interval and breakdown.
8. Fracture stimulate well.
9. Open well through variable choke and flow back slowly.
10. Nipple up Bowen BOP. TIH with 1 1/4" tubing with expendable check on bottom. Blow well with air.
11. Obtain and record gauges. When returns dry up, TOOH with 1 1/4" tubing.
12. TIH with 1 1/4" 2.33# IJ tubing with pump out plug on bottom and common pump seating nipple one joint off bottom. Land tubing at 2850'. Nipple down BOP. Nipple up wellhead.

DAVIS #19
WELLBORE DIAGRAMS

UNIT E SECTION 1 T31N-R12W
FRUITLAND COAL RECOMPLETION



WORKOVER / RECOMPLETION B. O. P. SCHEMATIC



MINIMUM: 2 7/8" 1500 PSI SINGLE GATE B.O.P.

MAXIMUM ANTICIPATED SHUT-IN WELLHEAD
PRESSURE IS LESS THAN 1500 PSI