

UNITED STATES
DEPARTMENT OF THE INTERIOR
BUREAU OF LAND MANAGEMENT

Sundry Notices and Reports on Wells

1. Type of Well
GAS

5. Lease Number
SF-077648
6. If Indian, All. or
Tribe Name

7. Unit Agreement Name

2. Name of Operator

BURLINGTON
RESOURCES OIL & GAS COMPANY

8. Well Name & Number
Davis #19

9. API Well No.
30-045-23535

10. Field and Pool
Basin Fruitland Coal/
Blanco Pictured Cliffs

11. County and State
San Juan Co, NM

3. Address & Phone No. of Operator

PO Box 4289, Farmington, NM 87499 (505) 326-9700

4. Location of Well, Footage, Sec., T, R, M

1840' FNL, 1110' FWL, Sec. 1, T-31-N, R-12-W, NMPM

12. CHECK APPROPRIATE BOX TO INDICATE NATURE OF NOTICE, REPORT, OTHER DATA

Type of Submission

☒ Notice of Intent
☐ Subsequent Report
☐ Final Abandonment

Type of Action

☒ Abandonment
☐ Recompletion
☐ Plugging Back
☐ Casing Repair
☐ Altering Casing
☐ Other -
☐ Change of Plans
☐ New Construction
☐ Non-Routine Fracturing
☐ Water Shut off
☐ Conversion to Injection

13. Describe Proposed or Completed Operations

It is intended to plug and abandon the subject well according to the attached procedure and wellbore diagram.

RECEIVED
JUN 10 1997
OIL CON. DIV.
DIST. 3

14. I hereby certify that the foregoing is true and correct.

Signed Nancy Olthmann (KM4) Title Regulatory Administrator Date 5/21/97

(This space for Federal or State Office use)

APPROVED BY /S/ Duane W. Spencer Title _____ Date JUN - 5 1997

CONDITION OF APPROVAL, if any:

PLUG AND ABANDONMENT PROCEDURE

4-1-97

Davis #19

Blanco Pictured Cliffs
1840' FNL and 1110' FWL
NW, Sec. 1, T31N, R12W
San Juan County, New Mexico

Note: All cement volumes use 100% excess outside pipe and 50' excess inside pipe. The stabilizing wellbore fluid will be 8.3 ppg, sufficient to balance all exposed formation pressures.

1. Install and test rig anchors. Prepare blow pit. Comply to all NMOCD, BLM and BROGC safety rules and regulations.
2. MOL and RU daylight pulling unit. Conduct safety meeting for all personnel on location. NU relief line to blow well down; kill with water as necessary. ND wellhead and NU BOP and stripping head; test BOP.
3. POH and tally 1-1/4" IJ tubing (2844'); visually inspect the tubing.
4. Plug #1 (Pictured Cliffs perforations and Fruitland tops 2675' - 1800'): RIH with 1-1/4" tubing and tag CIBP at 2875'. Pump 20 bbls water down tubing. Mix and spot 19 sxs Class B cement (50% excess, long plug) above CIBP to 2420'. POH and WOC. RIH and tag cement. Pressure test casing to 1000#.
5. Plug #2 (Kirtland and Ojo Alamo tops, 994' - 850'): Perforate 4 squeeze holes at 994'. Establish rate into squeeze holes if casing tested. PU 2-7/8" wireline cement retainer and RIH; set at 944'. RIH with tubing, sting into retainer and then establish rate into squeeze holes. Mix 55 sxs Class B cement and squeeze 50 sxs cement outside 2-7/8" casing and leave 5 sxs cement inside casing to cover Ojo Alamo top. POH and LD tubing and stinger.
6. Plug #3 (Surface): Perforate 4 holes at 197'. Establish circulation out bradenhead. Mix and pump approximately 60 sxs Class B cement down 2-7/8" casing from 197' to surface, circulate good cement out bradenhead valve. POH and LD tubing. Shut in well and WOC.
7. ND BOP and cut off well head below surface casing flange. Install P&A marker with cement to comply with regulations. RD, MOL and cut off anchors. Restore location per BLM stipulations.

Recommended:

RT McLaughlin 5/8/97
Operations Engineer

Approval:

Drilling Superintendent

Davis #19

Proposed P&A

DPNO 11630B

Blanco Pictured Cliffs

NW, Section 1, T-31-N, R-12-W, San Juan County, NM

Long: / Lat:

Today's Date 4/1/97

Spud: 10/13/79

Completed: 12/11/79

Re-Completed: 6/18/90

Elevation: 6307' (GL)

Logs: IES, GR-D, GR-CBL-CCL

Workovers: June '90

Nacimiento @ Surface

Ojo Alamo @ 900'

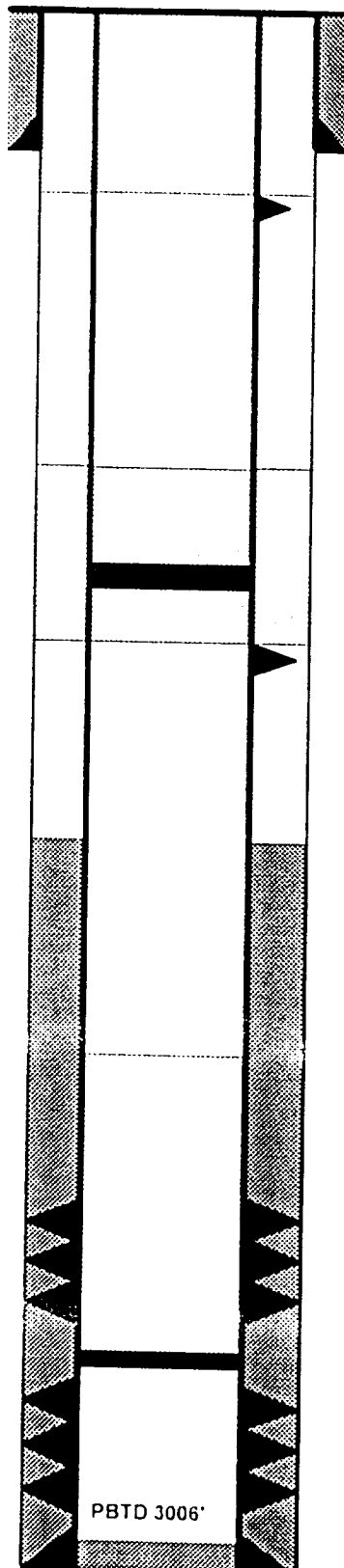
Kirtland @ 944'

Fruitland @ 2470'

Pictured Cliffs @ 2864'

12-1/4"
Hole

6-3/4" Hole



8-5/8" 24#, K-55 Csg set @ 147'
Cmt w/ 110 sx (Circulated to Surface)

Perforate @ 197'

Plug #3 197' - Surface
Cmt with 60 sxs Class B

Cmt Retainer @ 944'

Perforate @ 994'

Plug #2 994' - 850'
Cmt with 55 sxs Class B,
50 sxs outside casing
and 5 sxs inside

Top of Cmt @ 1800' ('90 CBL)

Plug #1 2875' - 2420'
Cmt with 19 sxs Class B,
(50% excess, long plug)

Fruitland Coal Perforations:
2650' - 2860' (2 SFP, 96 holes)

CIBP @ 2875' (1990)

Pictured Cliffs Perforations
2886' - 2916'

2-7/8" 6 5#, J-55 Casing @
3016'

Cmt w/ 293 sxs

TD 3029'

DAVIS #19

Current -- 4/28/97

DPNO 11630B

Blanco Pictured Cliffs

NW, Section 1, T-31-N, R-12-W, San Juan County, NM

Long: / Lat:

Today's Date 4/1/97

Spud 10/13/79

Completed: 12/11/79

Re-Completed: 6/18/90

Elevation: 6307'(GL)

Logs IES, GR-D, GR-CBL-CCL

Workovers June '90

Nacimiento @ Surface

Ojo Alamo @ 900'

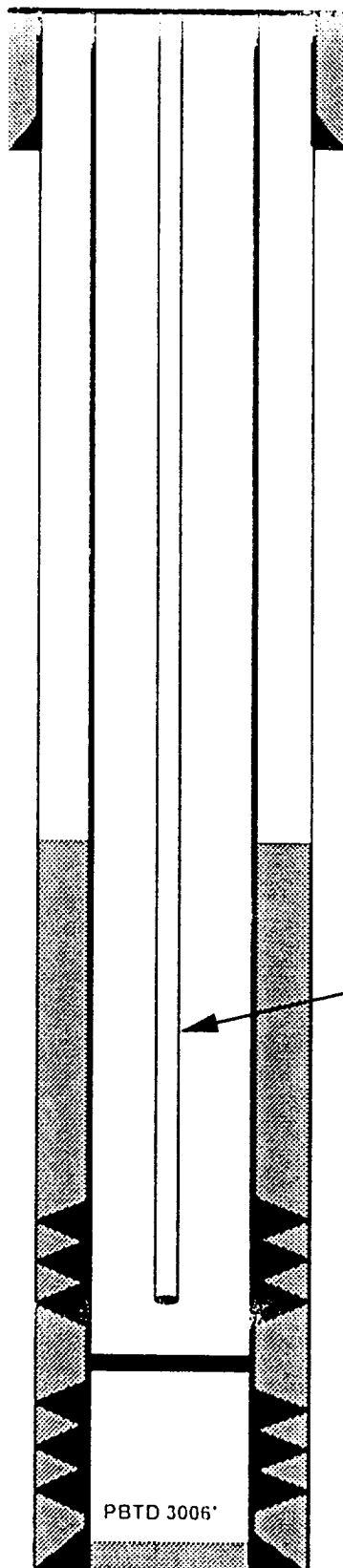
Kirtland @ 944'

Fruitland @ 2470'

Pictured Cliffs @ 2864'

12-1/4"
Hole

6-3/4" Hole



8-5/8" 24# K-55 Csg set @ 147'
Cmt w/ 110 sx (Circulated to Surface)

WORKOVER HISTORY

Jun '90 Kill well. ran CBL. TOC at 1800'.
set CIBP at 2875. isolate casing leas at
139'. back off casing at 464'. replace bad
casing. PT casing to 3500#. perf Ft Coals
2650' to 2860'. breakdown with packer and
acid. frac and blow clean with air. land
1-1/4" tbg at 2844

Bradenhead has pressure

Top of Cmt @ 1800' ('90
CBL)

1-1/4" IJ tbg @ 2844'

Fruitland Coal Perforations
2650' - 2860' (2 SPF, 96 holes)

CIBP @ 2875'

Pictured Cliffs Perforations
2886' - 2916'

2-7/8" 6.5# J-55 Casing @
3016'
Cmt w/ 293 sxs

PBTD 3006'

TD 3029'