

UNITED STATES
DEPARTMENT OF THE INTERIOR
GEOLOGICAL SURVEY

APPLICATION FOR PERMIT TO DRILL, DEEPEN, OR PLUG BACK

1a. TYPE OF WORK

DRILL ☒DEEPEN ☐PLUG BACK ☐

b. TYPE OF WELL

OIL
WELL ☐GAS
WELL ☒

OTHER

SINGLE
ZONE ☒MULTIPLE
ZONE ☐

2. NAME OF OPERATOR

SUPRON ENERGY CORPORATION

3. ADDRESS OF OPERATOR

P.O. Box 808, Farmington, New Mexico 87401

4. LOCATION OF WELL (Report location clearly and in accordance with any State requirements.*)

At surface

P 870 feet from the South line and 1015 feet from the East line

At proposed prod. zone

Same as above

14. DISTANCE IN MILES AND DIRECTION FROM NEAREST TOWN OR POST OFFICE*

5 miles southeast of La Plata, New Mexico

10. DISTANCE FROM PROPOSED*

LOCATION TO NEAREST
PROPERTY OR LEASE LINE, FT.
(Also to nearest drlg. unit line, if any)

870

18. DISTANCE FROM PROPOSED LOCATION*

TO NEAREST WELL, DRILLING, COMPLETED,
OR APPLIED FOR, ON THIS LEASE, FT.

1860

16. NO. OF ACRES IN LEASE

160 80

19. PROPOSED DEPTH

5200

17. NO. OF ACRES ASSIGNED
TO THIS WELL

9/308.79

20. ROTARY OR CABLE TOOLS

0 - 5200

21. ELEVATIONS (Show whether DF, RT, GR, etc.)

6027 Gr.

22. APPROX. DATE WORK WILL START*

8-1-79

23.

PROPOSED CASING AND CEMENTING PROGRAM

SIZE OF HOLE	SIZE OF CASING	WEIGHT PER FOOT	SETTING DEPTH	QUANTITY OF CEMENT
9-7/8"	7-5/8"	26.40	300	200 sx
6-3/4"	4-1/2"	10.50	5200	600 sx

We propose to drill this well through the Mesaverde zone (5200 ft.)
using mud. A full string of 4 1/2" casing will be set at 5200 feet.
The Mesaverde zone will then be perforated and sand - water fractured.
2-1/16" tubing will be set at 4650 feet.

RECEIVED

MAY 11 1979

U. S. GEOLOGICAL SURVEY
FARMINGTON, N. M.

RECEIVED

MAY 14 1979

OIL CON. DIST.

IN ABOVE SPACE DESCRIBE PROPOSED PROGRAM: If proposal is to deepen or plug back, give data on present productive zone and proposed new productive zone. If proposal is to drill or deepen directionally, give pertinent data on subsurface locations and measured and true vertical depth. Give blowout preventer program, if any.

24.

SIGNED

Kenneth E. Roddy

TITLE Production Superintendent

DATE May 10, 1979

(This space for Federal or State office use)

PERMIT NO.

APPROVAL DATE

APPROVED BY

TITLE

DATE

CONDITIONS OF APPROVAL, IF ANY:

Okal

NMOC

WELL LOCATION AND ACREAGE DEDICATION PLAT

Supers-des C-128
Effective 1-1-65

All distances must be from the outer boundaries of the Section.

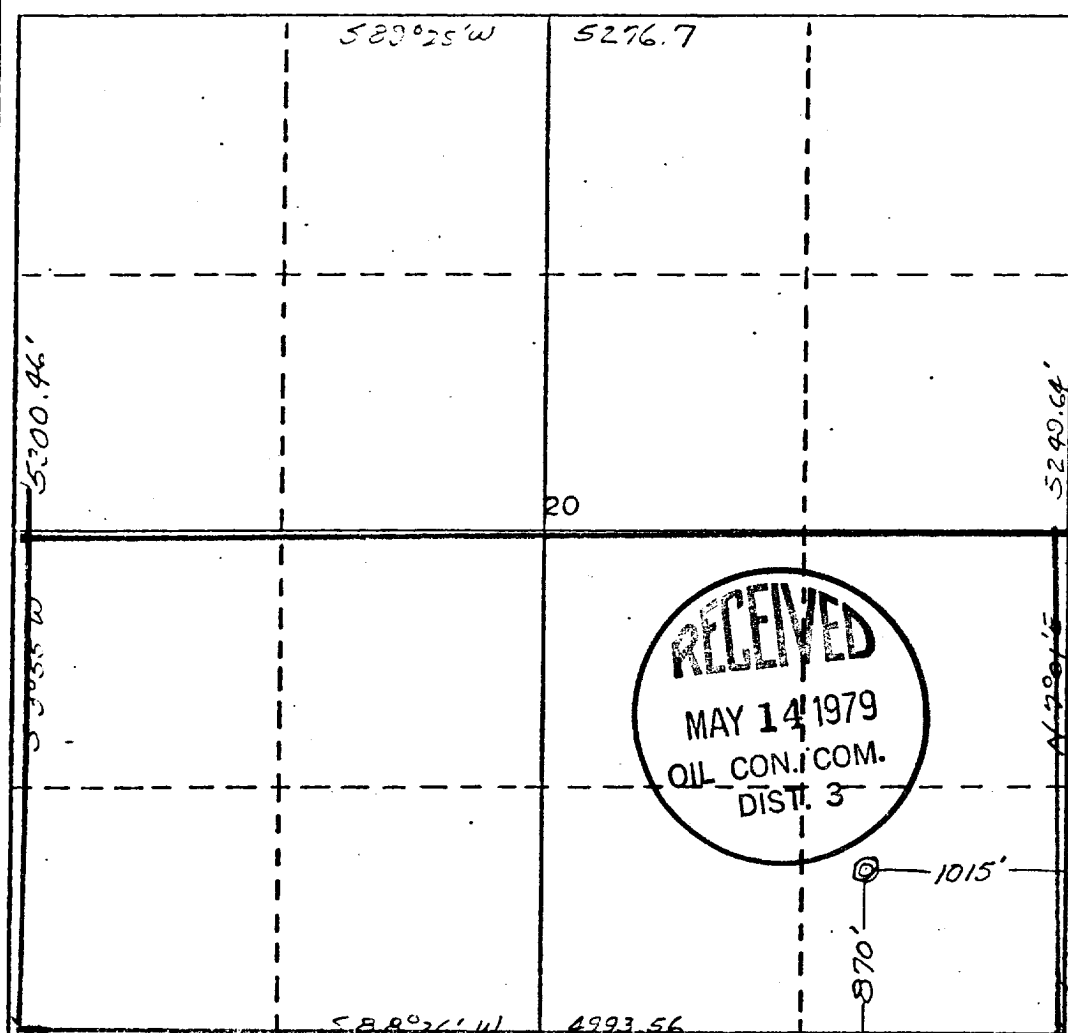
Operator SUPRON ENERGY CORPORATION		Lease NYE FEDERAL		Well No. 1-A
Unit Letter P	Section 20	Township 31 NORTH	Range 12 WEST	County SAN JUAN
Actual Footage Location of Well: 870 feet from the SOUTH line and 1015 feet from the EAST line				
Ground Level Elev. 6027	Producing Formation MESAVILLE	Pool BLANCO	Dedicated Acreage: 8 1/4 306.70 Acres	

1. Outline the acreage dedicated to the subject well by colored pencil or hachure marks on the plat below.
2. If more than one lease is dedicated to the well, outline each and identify the ownership thereof (both as to working interest and royalty).
3. If more than one lease of different ownership is dedicated to the well, have the interests of all owners been consolidated by communitization, unitization, force-pooling, etc?

☒ Yes ☐ No If answer is "yes," type of consolidation **Communitization Pool Unit No. 134**

If answer is "no," list the owners and tract descriptions which have actually been consolidated. (Use reverse side of this form if necessary.)

No allowable will be assigned to the well until all interests have been consolidated (by communitization, unitization, forced-pooling, or otherwise) or until a non-standard unit, eliminating such interests, has been approved by the Commission.



CERTIFICATION

I hereby certify that the information contained herein is true and complete to the best of my knowledge and belief.

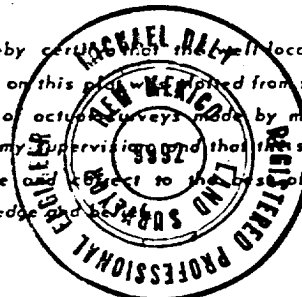
Rudy D. Matto
Name **Rudy D. Matto**

Position **Area Superintendent**

Company **Supron Energy Corporation**

Date **April 18, 1979**

I hereby certify that the well location shown on this plat was obtained from field notes of actual surveys made by me or under my supervision and that the same is true and correct to the best of my knowledge and belief.



Date Surveyed **11 April 1979**

Registered Professional Engineer and/or Land Surveyor

James P. Leese
James P. Leese

Certificate No. **1463**