

NO. OF COPIES RECEIVED	6
DISTRIBUTION	
SANTA FE	
FILE	
U.S.G.S.	2
LAND OFFICE	
OPERATOR	2

NEW MEXICO OIL CONSERVATION COMMISSION

30-075-23647
Form C-101
Revised 1-1-65

5A. Indicate Type of Lease	
STATE <input type="checkbox"/>	FEE <input checked="" type="checkbox"/>
5. State Oil & Gas Lease No.	

APPLICATION FOR PERMIT TO DRILL, DEEPEN, OR PLUG BACK

1a. Type of Work		7. Unit Agreement Name	
b. Type of Well OIL WELL <input type="checkbox"/> GAS WELL <input checked="" type="checkbox"/> OTHER <input type="checkbox"/>		8. Farm or Lease Name Harper	
2. Name of Operator Southland Royalty Company		9. Well No. 2E	
3. Address of Operator P. O. Drawer 570, Farmington, New Mexico		10. Field and Pool, or Wildcat Basin Dakota	
4. Location of Well UNIT LETTER <u>H</u> LOCATED <u>1780</u> FEET FROM THE <u>North</u> LINE AND <u>930</u> FEET FROM THE <u>East</u> LINE OF SEC. <u>14</u> TWP. <u>31N</u> RGE. <u>12W</u> NMPM		12. County San Juan	
19. Proposed Depth 7430'		19A. Formation Dakota	
21. Elevations (Show whether DF, RT, etc.) 6229' GR		20. Rotary or C.T. Rotary	
21A. Kind & Status Plug. Bond		22. Approx. Date Work will start July 15, 1979	

23.

PROPOSED CASING AND CEMENT PROGRAM

SIZE OF HOLE	SIZE OF CASING	WEIGHT PER FOOT	SETTING DEPTH	SACKS OF CEMENT	EST. TOP
13-3/4"	10-3/4"	32.75#	200'	200 sxs	Circ to surface
9-5/8"	7-5/8"	26.40#	4990'	420 sxs (2 stg)	Cover Ojo Alamo
6-3/4"	5-1/2"	15.50#	4840'-7150'	256 sxs	Cover liner
6-3/4"	5-1/2"	17.00#	7150'-7430'		
	2-3/8"	4.7#	7560'		

Surface formation is Nacimiento.
Top of Ojo Alamo sand is at 1331'.
Top of Pictured Cliffs sand is at 2796'.
Top of Cliff House sand is at 4281'.

Fresh water mud will be used to drill from surface to intermediate depth.
An air system will be used to drill from intermediate depth to total depth.
It is anticipated that an IES and a GR-Density log will be run at intermediate depth.
It is anticipated that a GR-Induction and a GR-Density log will be run at total depth.
No abnormal pressures or poisonous gases are anticipated in this well.
It is expected that this well will be drilled before September 1, 1979. This depends on time required for approvals, rig availability and the weather.

Gas is dedicated.

Dedicated Acreage: E2 Section 14, T31N, R12W (309.70 acres)

IN ABOVE SPACE DESCRIBE PROPOSED PROGRAM: IF PROPOSAL IS TO DEEPEN OR PLUG BACK, GIVE DATA ON PRESENT PRODUCTIVE ZONE AND PROPOSED NEW PRODUCTIVE ZONE. GIVE BLOWOUT PREVENTER PROGRAM, IF ANY.

I hereby certify that the information above is true and complete to the best of my knowledge and belief.

Signed [Signature] Title District Production Manager Date June 27, 1979

(This space for State Use)

APPROVED BY [Signature] TITLE DEPUTY OIL & GAS INSPECTOR, DIST #3 DATE JUL 1979

CONDITIONS OF APPROVAL, IF ANY:

None



APPROVED FOR 90 DAYS DRILLING PERMIT

EXPIRES 9-30-79

**NEW MEXICO OIL CONSERVATION COMMISSION
WELL LOCATION AND ACREAGE DEDICATION PLAT**

Form C-102
Supersedes C-128
Effective 1-1-65

All distances must be from the outer boundaries of the Section.

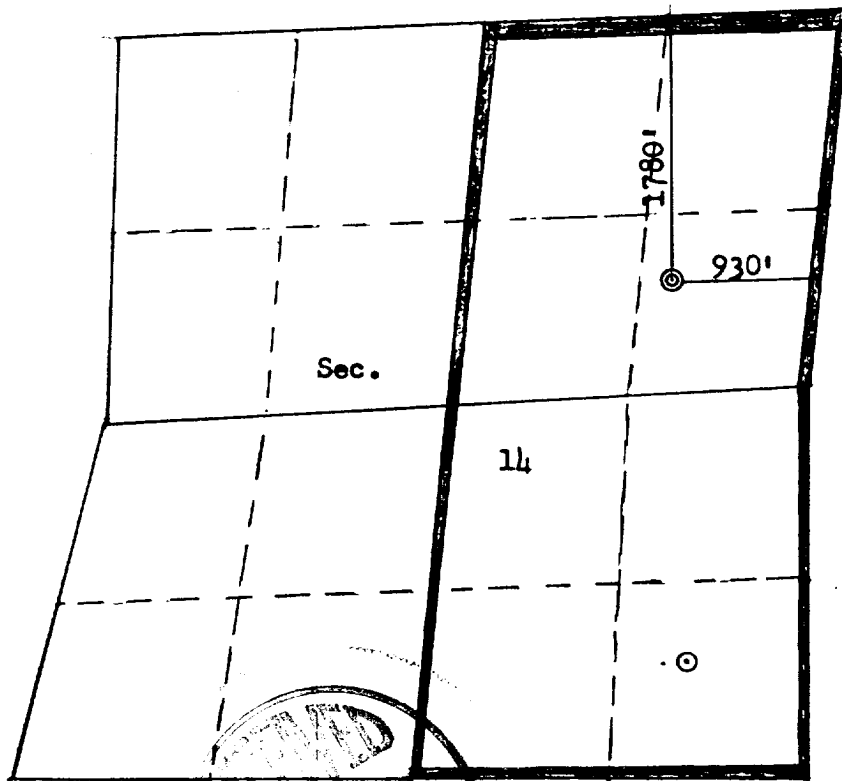
Operator SOUTHLAND ROYALTY COMPANY			Lease HARPER		Well No. 2E
Unit Letter H	Section 14	Township 31N	Range 12W	County San Juan	
Actual Footage Location of Well: 1780 feet from the North line and 930 feet from the East line					
Ground Level Elev: 6229	Producing Formation Dakota	Pool Basin Dakota		Dedicated Acreage: 309.70 Acres	

1. Outline the acreage dedicated to the subject well by colored pencil or hachure marks on the plat below.
2. If more than one lease is dedicated to the well, outline each and identify the ownership thereof (both as to working interest and royalty).
3. If more than one lease of different ownership is dedicated to the well, have the interests of all owners been consolidated by communitization, unitization, force-pooling, etc?

☐ Yes ☐ No If answer is "yes," type of consolidation _____

If answer is "no," list the owners and tract descriptions which have actually been consolidated. (Use reverse side of this form if necessary.) _____

No allowable will be assigned to the well until all interests have been consolidated (by communitization, unitization, forced-pooling, or otherwise) or until a non-standard unit, eliminating such interests, has been approved by the Commission.



SCALE: 1"=1320'

CERTIFICATION

I hereby certify that the information contained herein is true and complete to the best of my knowledge and belief.

Name _____
Position **District Production Manager**
Company **Southland Royalty Company**
Date **June 27, 1979**

I hereby certify that the well location shown on this plat was plotted from field notes of actual surveys made by me or under my supervision, and that the same is true and correct to the best of my knowledge and belief.

Date Surveyed **June 18, 1979**
Registered Professional Engineer and Land Surveyor
Fred H. Kerr Jr.
Certificate No. **3950**



Southland Royalty Company

June 27, 1979

Oil Conservation Division
1000 Rio Brazos Road
Aztec, New Mexico 87410

Attention: Mr. Al Kendrick

Dear Sir:

All drilling and completion rigs will be equipped with 6" or larger double gate hydraulic blowout preventers and a hydraulic operated closing unit with steel lines.

The preventer is 3000# working pressure and 6000# test.

All crews will be thoroughly trained in the operation of this preventer. The preventer will be tested frequently enough to insure safe operation.

Yours truly,

L. O. Van Ryan
District Production Manager

LOVR/dg