

NO. OF COPIES RECEIVED	6
DISTRIBUTION	
SANTA FE	1
FILE	2
U.S.G.S.	2
LAND OFFICE	
OPERATOR	2

NEW MEXICO OIL CONSERVATION COMMISSION

30-045-23682  
Form C-101  
Revised 1-1-65

5A. Indicate Type of Lease	
STATE <input type="checkbox"/>	FEE <input checked="" type="checkbox"/>
5. State Oil & Gas Lease No.	

APPLICATION FOR PERMIT TO DRILL, DEEPEN, OR PLUG BACK

1a. Type of Work		7. Unit Agreement Name	
b. Type of Well OIL WELL <input type="checkbox"/> GAS WELL <input checked="" type="checkbox"/> OTHER <input type="checkbox"/>		San Juan 32-7 Unit	
2. Name of Operator Northwest Pipeline Corporation		8. Farm or Lease Name San Juan 32-7 Unit	
3. Address of Operator P.O. Box 90 - Farmington, New Mexico 87401		9. Well No. 58	
4. Location of Well UNIT LETTER G LOCATED 2360 FEET FROM THE North LINE AND 1840 FEET FROM THE East LINE OF SEC. 18 TWP. 32N RGE. 7W NMPM		10. Field and Pool, or Wildcat Basin Dakota	
11. County San Juan		12. County San Juan	
19. Proposed Depth 8000		19A. Formation Dakota	
20. Rotary or C.T. Rotary		21. Elevations (Show whether DF, RT, etc.) 6180'	
21A. Kind & Status Plug. Bond		21B. Drilling Contractor	
22. Approx. Date Work will start - September 1, 1979			

PROPOSED CASING AND CEMENT PROGRAM

SIZE OF HOLE	SIZE OF CASING	WEIGHT PER FOOT	SETTING DEPTH	SACKS OF CEMENT	EST. TOP
12 1/4"	9 5/8"	32.3#	350'	125 sks.	
8 3/4"	7"	20#	3574'	100 sks.	
6 1/4"	4 1/2"	10.5#	8000'	210 sks.	

Selectively perforate and stimulate the Dakota formation.

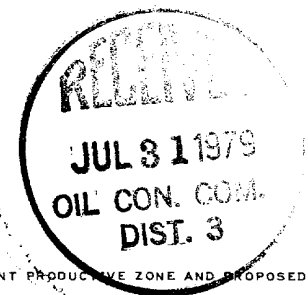
A BOP will be installed after the surface pipe is cemented, all subsequent work will be performed through the BOPs.

Gas is dedicated.

The North half of section 18 is dedicated.

APPROVED FOR  
FOR 10 DAYS  
DRILLING COMMISSION

EXPIRES 10-29-79



IN ABOVE SPACE DESCRIBE PROPOSED PROGRAM: IF PROPOSAL IS TO DEEPEN OR PLUG BACK, GIVE DATA ON PRESENT PRODUCTION ZONE AND PROPOSED NEW PRODUCTION ZONE. GIVE BLOWOUT PREVENTER PROGRAM, IF ANY.

I hereby certify that the information above is true and complete to the best of my knowledge and belief.

Signed M. Turnbaugh Title Assoc. Drilling Engineer Date 7/25/79  
M. Turnbaugh  
(This space for State Use)

APPROVED BY Frank E. Perry TITLE DEPUTY OIL & GAS INSPECTOR, DIST. #3 DATE JUL 31 1979  
CONDITIONS OF APPROVAL, IF ANY:

NEW MEXICO OIL CONSERVATION COMMISSION  
WELL LOCATION AND ACREAGE DEDICATION PLAT

Form C-102  
Supersedes C-128  
Effective 1-1-65

All distances must be from the outer boundaries of the Section.

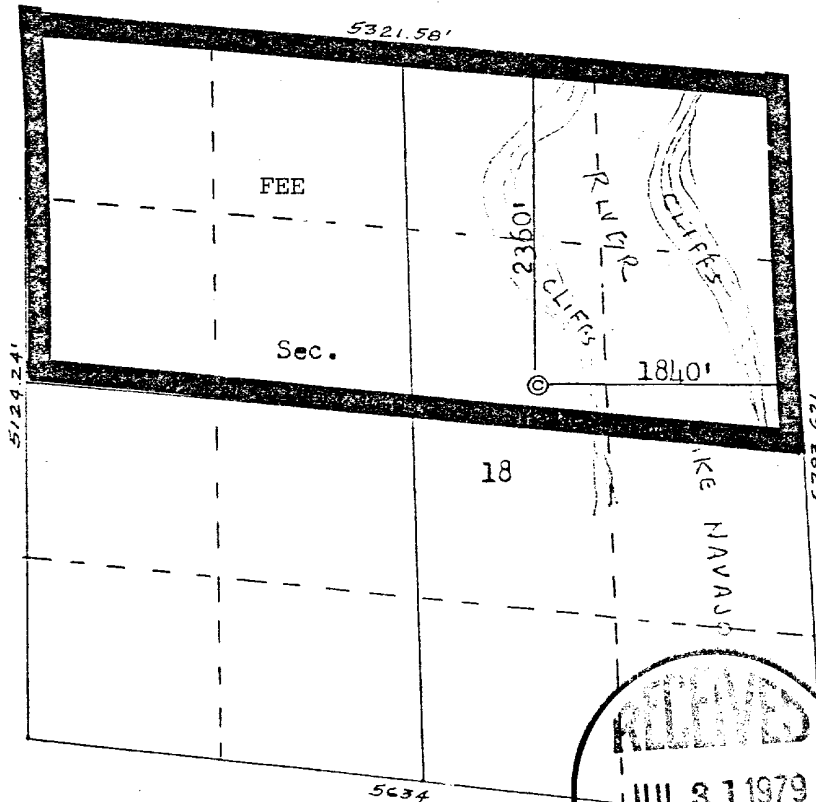
Operator NORTHWEST PIPELINE CORPORATION			Lease SAN JUAN 32-7 UNIT		Well No. 58
Unit Letter G	Section 18	Township 32N	Range 7W	County San Juan	
Actual Footage Location of Well: 2360 feet from the North line and 1840 feet from the East line					
Ground Level Elev.: 6180	Producing Formation Dakota		Pool Basin	Dedicated Acreage: 317.41 Acres	

1. Outline the acreage dedicated to the subject well by colored pencil or hachure marks on the plat below.
2. If more than one lease is dedicated to the well, outline each and identify the ownership thereof (both as to working interest and royalty).
3. If more than one lease of different ownership is dedicated to the well, have the interests of all owners been consolidated by communitization, unitization, force-pooling, etc?

☐ Yes ☐ No If answer is "yes," type of consolidation \_\_\_\_\_

If answer is "no," list the owners and tract descriptions which have actually been consolidated. (Use reverse side of this form if necessary.) \_\_\_\_\_

No allowable will be assigned to the well until all interests have been consolidated (by communitization, unitization, forced-pooling, or otherwise) or until a non-standard unit, eliminating such interests, has been approved by the Commission.



Scale: 1"=1320'

CERTIFICATION

I hereby certify that the information contained herein is true and complete to the best of my knowledge and belief.

*Mike Turnbaugh*

Name

Mike Turnbaugh

Position

Assoc. Drilling Engineer

Company

Northwest Pipeline Corp.

Date

7/25/79

I hereby certify that the well location shown on this plat was plotted from field notes of actual surveys made by me or under my supervision, and that the same is true and correct to the best of my knowledge and belief.

Date Surveyed

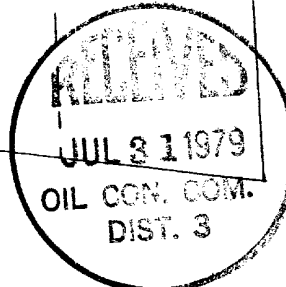
July 20, 1979

Registered Professional Engineer and Land Surveyor

*Fred B. Kerr Jr.*

Certificate No. B. KERR

3950



A topographic map segment showing contour lines. A prominent contour line is labeled '6600'. The lines indicate a steep slope, with the elevation increasing towards the right side of the image.

44581  
ITIFA.

