

UNITED STATES  
DEPARTMENT OF THE INTERIOR  
GEOLOGICAL SURVEY

30-045-237-40

5. LEASE DESIGNATION AND SERIAL NO.

NM 021124

6. IF INDIAN, ALLOTTEE OR TRIBE NAME

7. UNIT AGREEMENT NAME

8. FARM OR LEASE NAME

Newberry

9. WELL NO.

13A

10. FIELD AND POOL, OR WILDCAT

Blanco Mesa Verde

11. SEC., T., R., M., OR BLK.

Sec. 17, T-31-N, R-12-W  
NMPM

12. COUNTY OR PARISH

San Juan

13. STATE

NM

## APPLICATION FOR PERMIT TO DRILL, DEEPEN, OR PLUG BACK

1a. TYPE OF WORK

DRILL ☒DEEPEN ☐PLUG BACK ☐

b. TYPE OF WELL

OIL  
WELL ☐GAS  
WELL ☒

OTHER

SINGLE  
ZONE ☒MULTIPLE  
ZONE ☐

2. NAME OF OPERATOR

El Paso Natural Gas Company

3. ADDRESS OF OPERATOR

PO Box 289, Farmington, NM 87401

4. LOCATION OF WELL (Report location clearly and in accordance with any State requirements.)\*

At surface

1600'N, 1635'W

At proposed prod. zone

same

14. DISTANCE IN MILES AND DIRECTION FROM NEAREST TOWN OR POST OFFICE\*

4 miles Southeast of LaPlata, NM

15. DISTANCE FROM PROPOSED\*

LOCATION TO NEAREST  
PROPERTY OR LEASE LINE, FT.  
(Also to nearest drlg. unit line, if any)

1600'

16. NO. OF ACRES IN LEASE

400

17. NO. OF ACRES ASSIGNED  
TO THIS WELL

W - 320.00

18. DISTANCE FROM PROPOSED LOCATION\*  
TO NEAREST WELL, DRILLING, COMPLETED,  
OR APPLIED FOR, ON THIS LEASE, FT.

.5 mile

19. PROPOSED DEPTH  
5141'20. ROTARY OR CABLE TOOLS  
Rotary

21. ELEVATIONS (Show whether DF, RT, GR, etc.)

5656'GL

22. APPROX. DATE WORK WILL START\*

23.

## PROPOSED CASING AND CEMENTING PROGRAM

SIZE OF HOLE	SIZE OF CASING	WEIGHT PER FOOT	SETTING DEPTH	QUANTITY OF CEMENT
13 3/4"	9 5/8"	36.0#	200'	224 cu.ft. to circulate
8 3/4"	7"	20.0#	2752'	492 cu.ft. to cover Ojo Alamo
6 1/4"	4 1/2" liner	10.5#	2602-5141'	443 cu.ft. to circ. liner

Selectively perforate and sandwater fracture the Mesa Verde formation.

A 3000 psi WP and 6000 psi test double gate preventer equipped with blind and pipe rams will be used for blow out prevention on this well.

This gas is dedicated.

The W/2 of Section 17 is dedicated to this well.

IN ABOVE SPACE DESCRIBE PROPOSED PROGRAM: If proposal is to deepen or plug back, give data on present productive zone and proposed new productive zone. If proposal is to drill or deepen directionally, give pertinent data on subsurface locations and measured and true vertical depths. Give blowout preventer program, if any.

24.

SIGNED

TITLE

Drilling Clerk

DATE

8-13-79

(This space for Federal or State office use)

PERMIT NO.

APPROVAL DATE

APPROVED BY

TITLE

DATE

CONDITIONS OF APPROVAL, IF ANY:

\*See Instructions On Reverse Side

NM 000

## OIL CONSERVATION DIVISION

P. O. BOX 2088

SANTA FE, NEW MEXICO 87501

Form C-102  
Revised 10-1-78

STATE OF NEW MEXICO

ENERGY AND MINERALS DEPARTMENT

All distances must be from the outer boundaries of the Section.

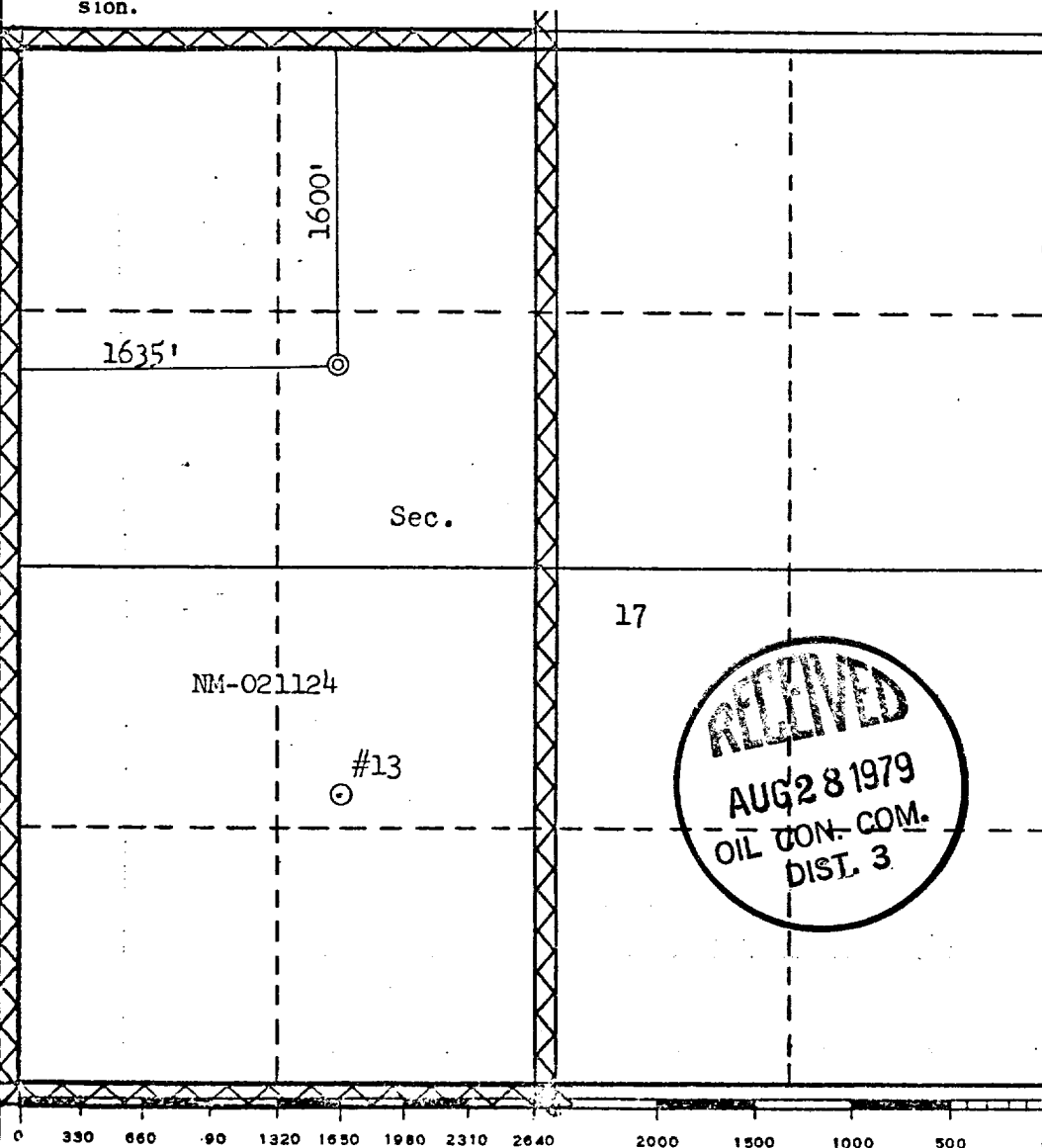
Operator EL PASO NATURAL GAS COMPANY			Lease NEWBERRY (NM-021124)		Well No. 13A
Unit Letter F	Section 17	Township 31N	Range 12W	County San Juan	
Actual Footage Location of Well: 1600 feet from the North line and 1635 feet from the West line					
Ground Level Elev. 5956	Producing Formation Mesa Verde		Pool Blanco Mesa Verde	Dedicated Acreage: 320.00 Acres	

1. Outline the acreage dedicated to the subject well by colored pencil or hachure marks on the plat below.
2. If more than one lease is dedicated to the well, outline each and identify the ownership thereof (both as to working interest and royalty).
3. If more than one lease of different ownership is dedicated to the well, have the interests of all owners been consolidated by communitization, unitization, force-pooling, etc?

☐ Yes ☐ No If answer is "yes," type of consolidation \_\_\_\_\_

If answer is "no," list the owners and tract descriptions which have actually been consolidated. (Use reverse side of this form if necessary.) \_\_\_\_\_

No allowable will be assigned to the well until all interests have been consolidated (by communitization, unitization, forced-pooling, or otherwise) or until a non-standard unit, eliminating such interests, has been approved by the Commission.



## CERTIFICATION

I hereby certify that the information contained herein is true and complete to the best of my knowledge and belief.

Name

Drilling Clerk

Position

El Paso Natural Gas Co.

Company

August 13, 1979

Date

I hereby certify that the well location shown on this plat was plotted from field notes of actual surveys made by me or under my supervision, and that the same is true and correct to the best of my knowledge and belief.

Date Surveyed

Registered Professional Engineer  
and/or Land Surveyor

Certificate No.

3950

Multi-Point Surface Use Plan

Newberry #13A

1. Existing Road - Please refer to Map No. 1 which shows the existing roads. New roads which will be required have been marked on this map. All existing and new roads will be properly maintained during the duration of this project.
2. Planned Access Roads - Please refer to Map No. 1. The grade of the access roads will be consistent with that of the local terrain. The road surface will not exceed twenty feet (20') in width. Upon completion of the project, the access road will be adequately drained to control soil erosion. Drainage facilities may include ditches, water bars, culverts or any other measure deemed necessary by trained Company personnel to insure proper drainage. Gates and/or cattleguards will be installed if necessary.
3. Location of Existing Wells - Please refer to Map No. 2.
4. Location of Tank Batteries, Production Facilities, and Production Gathering and Service Lines - Please refer to Maps No. 1 and No. 2. Map No. 2 shows the existing gas gathering lines. Map No. 1 shows the existing roads and new proposed access roads. All known production facilities are shown on these two maps.
5. Location and Type of Water Supply - Water for the proposed project will be obtained from Farmers Ditch.
6. Source of Construction Materials - No additional materials will be required to build either the access road or the proposed location.
7. Methods of Handling Waste Materials - All garbage and trash materials will be put into a burn pit shown on the attached Location Plat No. 1. When clean-up operations are begun on the proposed project, the burn pit with its refuse will be buried to a depth of at least three feet (3'). A latrine, the location of which is also shown on Plat No. 1,

7. cont'd. will be provided for human waste. If large amounts of liquids are left in the reserve pit after completion of the project, the pit will be fenced until the liquids have had adequate time to dry. The location clean-up will not take place until such time as the reserve pit can be properly covered over to prevent run-off from carrying any of these materials into the watershed. No earthen pit will be located on natural drainages; all earthen pits will be so constructed as to prevent leakage from occurring.
8. Ancillary Facilities - No camps or airstrips will be associated with this project.
9. Wellsite Layout - Please refer to the attached Plat No. 1.
10. Plans for Restoration of the Surface - After completion of the proposed project, the location will be cleaned and leveled. The location will be left in such a condition that will enable reseeding operations to be carried out. Seed mixture as designated by the responsible government agency will be used. The reseeding operation will be performed during the time period set forth by the regulatory body. The location production equipment will be painted as designated by the responsible government agency.
11. Other Information - The terrain is sagebrush flats with sagebrush growing. Cattle and deer are occasionally seen on the proposed project site.
12. Operator's Representative - W.D. Dawson, PO Box 990, Farmington, NM
13. Certification - I hereby certify that I, or persons under my direct supervision, have inspected the proposed drillsite and access route; that I am familiar with the conditions which presently exist; that the statements made in this plan are, to the best of my knowledge, true and correct; and that the work associated with the operations proposed herein will be performed by El Paso Natural Gas Company and its contractors and sub-contractors in conformity with this plan and the terms and conditions under which it is approved.

L. A. Aimes

L. A. Aimes  
Project Drilling Engineer

August 13, 1979

Operations Plan  
Newberry #13A

I. Location: 1600'N, 1635'W, Section 17, T-31-N, R-12-W, San Juan County, NM

Field: Blanco Mesa Verde

Elevation: 5956'GL

II. Geology:

A. Formation Tops:	Surface	Animas	Lewis	2552'
	Ojo Alamo	567'	Mesa Verde	3900'
	Kirtland	585'	Menefee	4135'
	Fruitland	1850'	Point Lookout	4691'
	Pic.Cliffs	2338'	Total Depth	5741'

B. Logging Program: GR-Ind. and GR-Density at Total Depth.

C. Coring Program: none

D. Natural Gauges: 3890', 4125', 4680' and at Total Depth.  
Also gauge any noticeable increase in gas. Record all gauges in daily drilling report and on morning report.

III. Drilling:

A. Mud Program: mud from surface to 2752'. Gas from intermediate casing to Total Depth.

IV. Materials:

A. Casing Program:	<u>Hole Size</u>	<u>Depth</u>	<u>Casing Size</u>	<u>Wt.&amp;Grade</u>
	13 3/4"	200'	9 5/8"	36.0# K-55
	8 3/4"	2752'	7"	20.0# K-55
	6 1/4"	2602-5141'	4 1/2"	10.5# K-55

B. Float Equipment: 9 5/8" surface casing - B & W guide shoe  
(Prod. No. FC 06-09611-0200)

7" intermediate casing - Pathfinder guide shoe (Part #1003-1-007) and Howco self-fill insert float valve (Price Ref.36A&37), 5 Pathfinder stabilizers (Part #107-10) every other joint above shoe. Run float two joints above shoe.

4 1/2" liner - 4 1/2" liner hanger with neoprene packoff. Larkin geyser shoe (Fig.222) and Larkin flapper type float collar(fig.404 M&F).

C. Tubing: 5741' of 2 3/8", 4.7#, J-55 8rd EUE tubing with a common pump seating nipple one joint above bottom. Tubing will be open ended.

D. Wellhead Equipment: 10" 900 x 9 5/8" casing head. 10" 900 x 6" 900 xmas tree.

Operations Plan - Newberry #13A

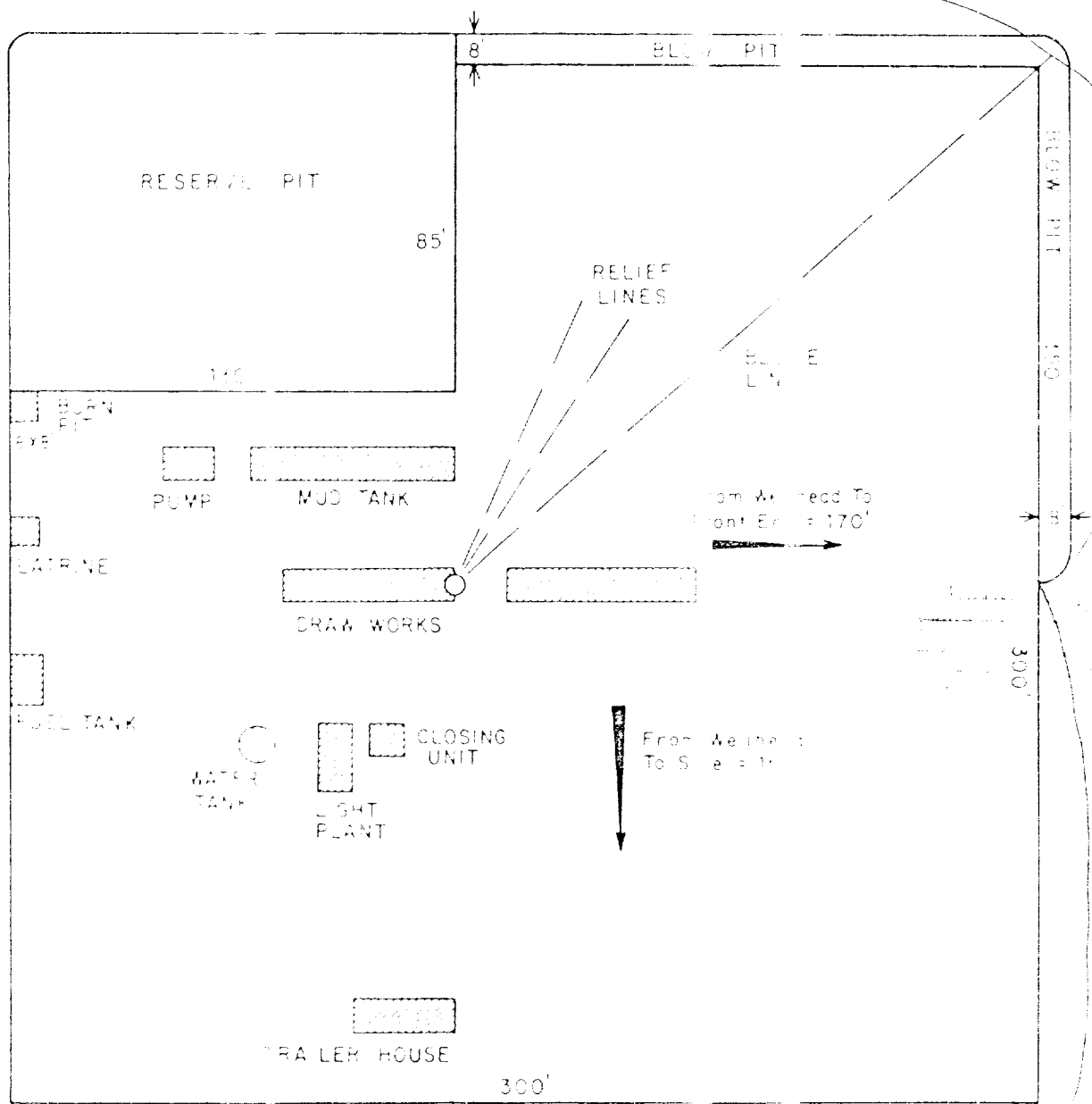
V. Cementing:

9 5/8" surface casing - use 190 sks. of Class "B" cement with 1/4# gel-flake per sack and 3% calcium chloride (224 cu.ft. of slurry, 100% excess to circulate to surface). WOC 12 hours. Test casing to 600#/30 minutes.

7" intermediate casing - use 231 sks. of 65/35 Class "B" Poz with 6% gel and 2% calcium chloride (8.3 gallons of water per sack) followed by 100 sks. of Class "B" with 2% calcium chloride (492 cu.ft. of slurry, 50% excess to cover Ojo Alamo). Run temperature survey at 8 hours. WOC 12 hours. Test casing to 1200#/30 minutes.

4 1/2" liner - precede cement with 20 barrels of gel water (2 sks. gel) Cement with 319 sks. of 50/50 Class "B" Poz with 2% gel, 0.6% Halad-9, 6.25# gilsonite plus 1/4# Flocele per sack (443 cu.ft. of slurry, 70% excess to circulate liner). WOC 18 hours.

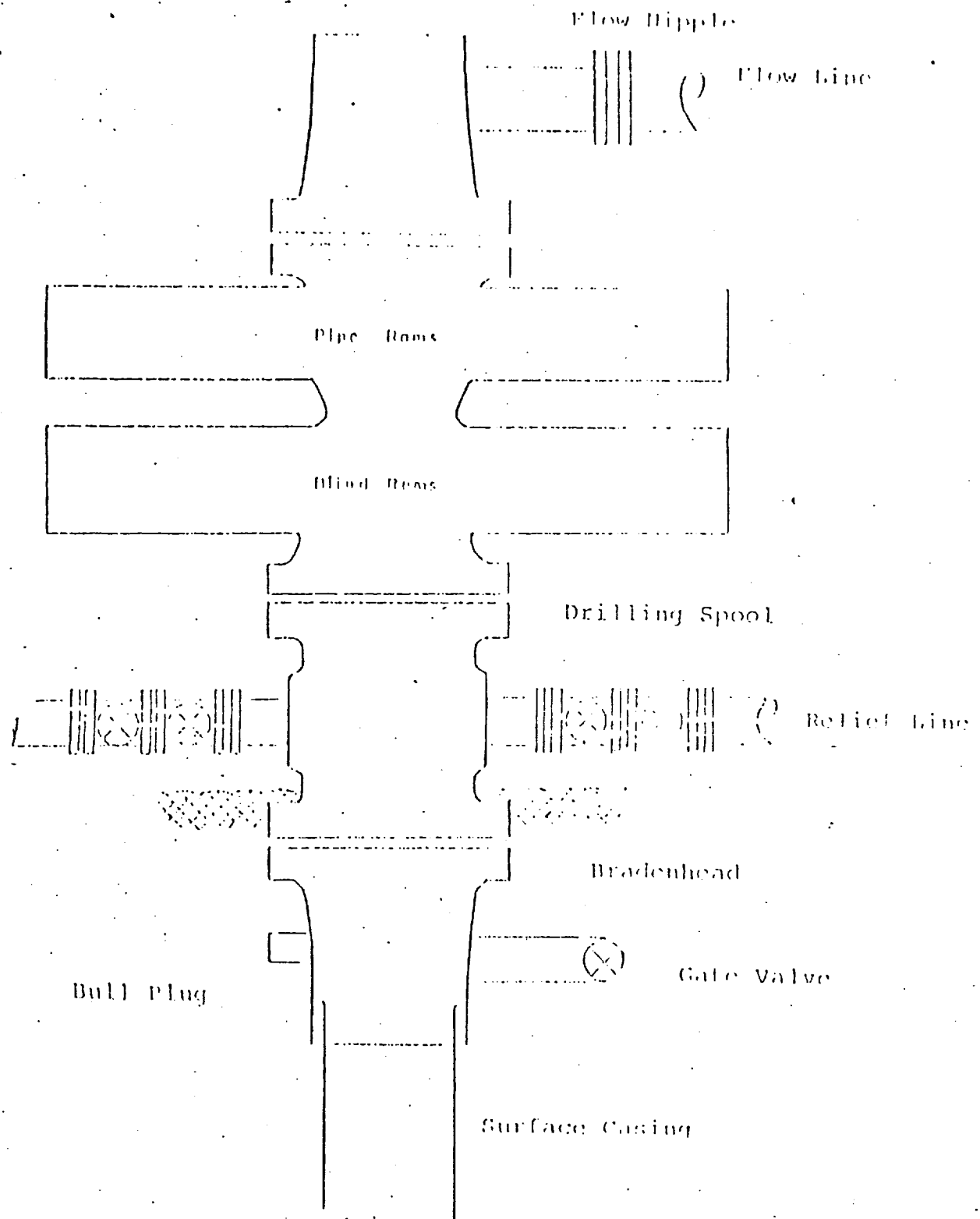
3' Full



3' cut

ENG. REC. _____ DATE _____ DRAWN J.L.H. 8-16-78 CHECKED _____ CHECKED _____ PROJ. APP. _____ DESIGN _____ W.O. _____		E El Paso Natural Gas Company TYPICAL LOCATION PLAT FOR MESAVERDE OR DAKOTA DRILL	
PRT. SER. DATE TO PRINT RECORD		SCALE: 1" = 50'	DWG. NO.

# Typical B.O.P. Installation for Mega Verde Well



Series 900 Double Gate BOP, rated  
at 3000 psi Working Pressure  
When gas drilling operations begin a Shaffer type 50  
or equivalent rotating head is installed on top of the  
flow nipple and the flow line is converted into a blowie line

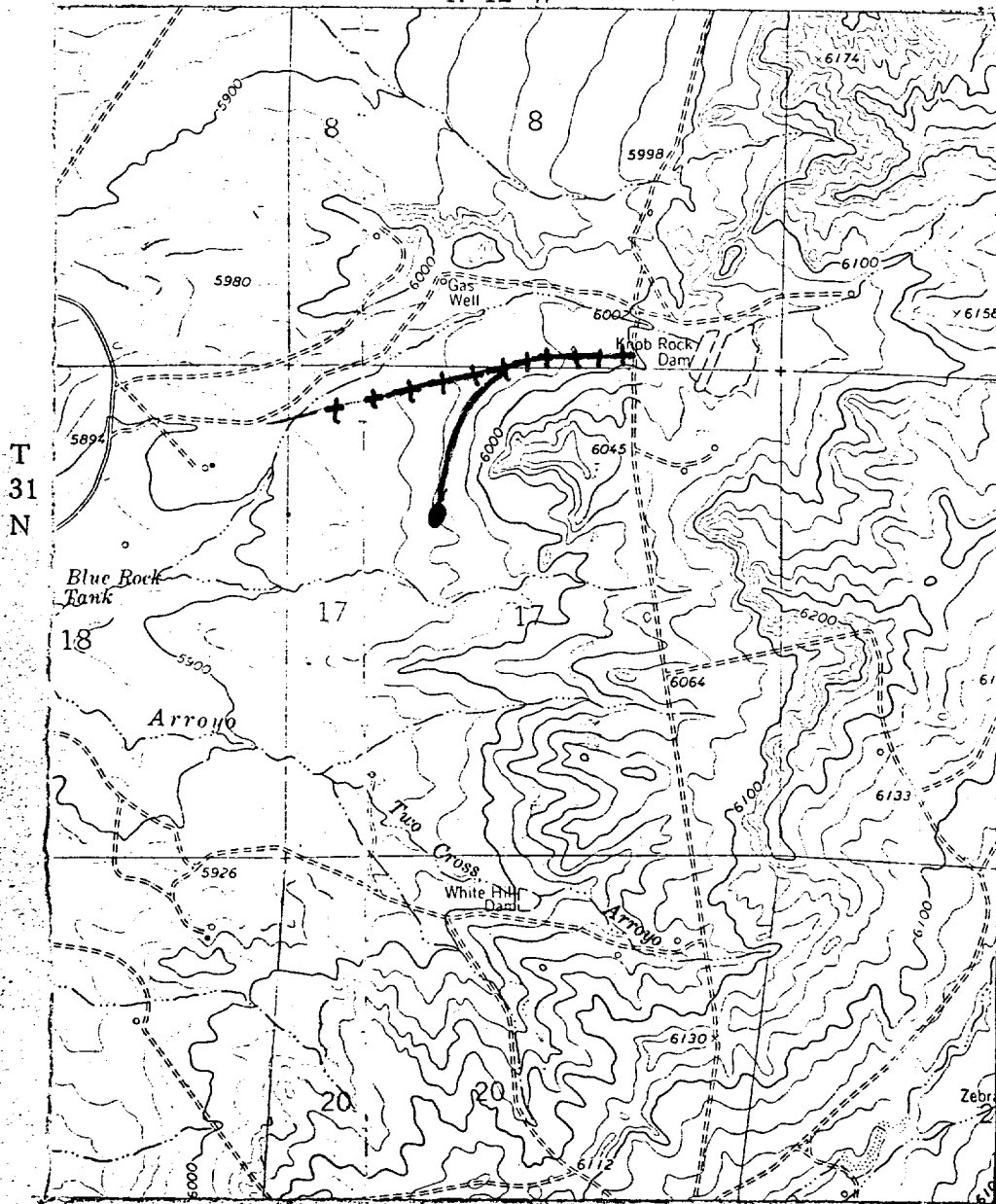


# EL PASO NATURAL GAS COMPANY

Newberry #13A

NW 17-31-12

R-12-W



MAP #1

## LEGEND OF RIGHT-OF-WAYS

EXISTING ROADS	—
EXISTING PIPELINES	+++
EXISTING ROAD & PIPELINE	+++
PROPOSED ROADS	—
PROPOSED PIPELINES	+++
PROPOSED ROAD & PIPELINE	+++

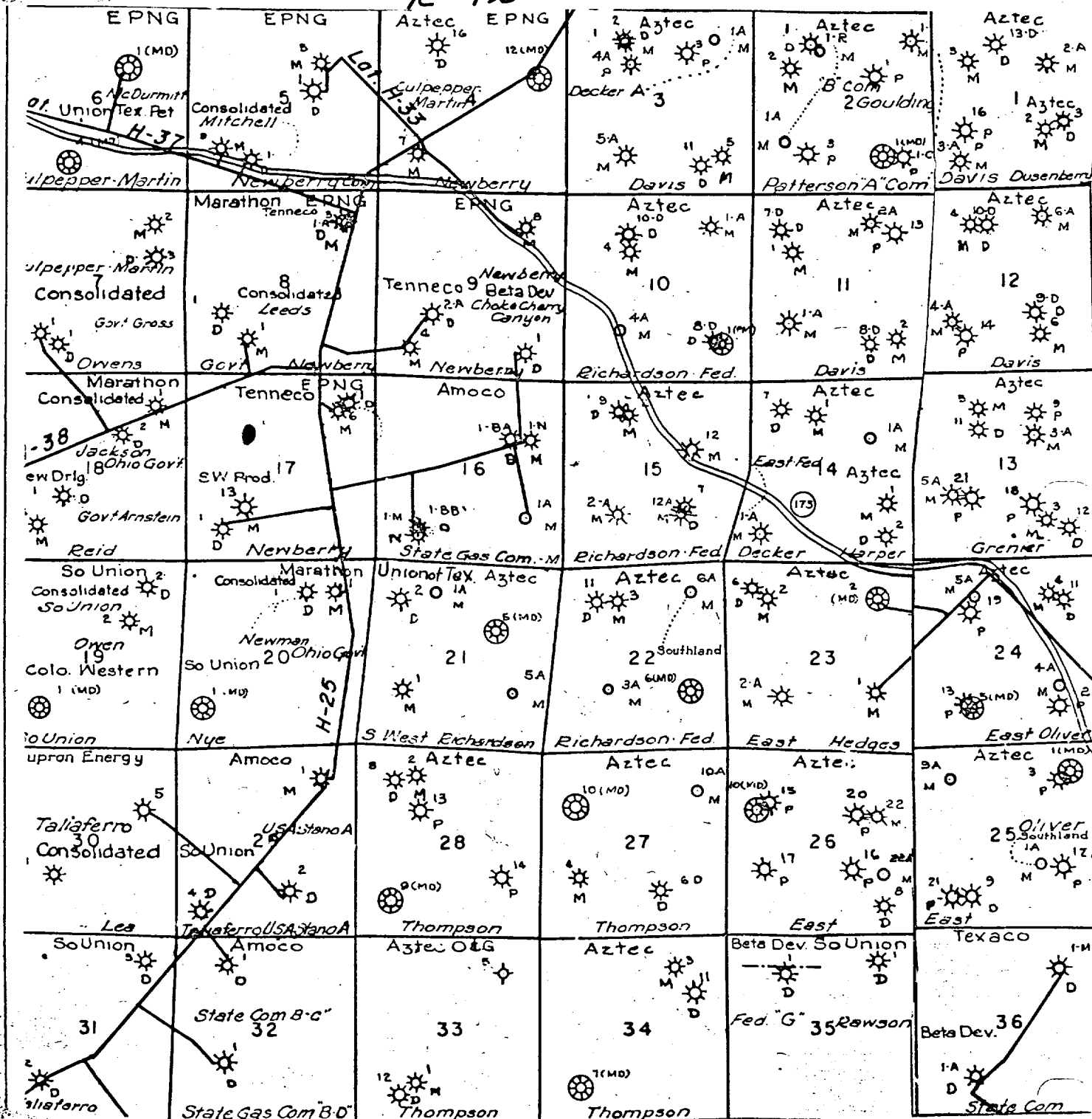
# EL PASO NATURAL GAS COMPANY

Newberry #13A

NW 17-31-12

R-12-W

T  
31  
N



MAP #2

Proposed Location