

BURLINGTON RESOURCES

New Mexico Oil Conservation Division
1000 Rio Brazos Road
Aztec, New Mexico 87410

Re: Davis #8E
SENE, Section 11, T-31-N, R-12-W
30-045-23759
San Juan County, New Mexico

Gentlemen:

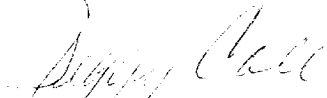
The above referenced well is a Mesaverde/Dakota commingle. Attached is a copy of the allocation for the commingling of the subject well completed on September 7, 2001. DHC-204az was issued for this well.

Gas: Mesa Verde 52%
Dakota 48%

Oil: Mesa Verde 0%
Dakota 100%

The gas percentages are based upon reserves assigned to each formation founded on production from the respective formations before and after workover operations. Because condensate production did not increase with the addition of the Mesaverde formation, the oil has been allocated solely to the Dakota formation. Please let me know if you have any questions.

Sincerely,


Peggy Cole
Regulatory Supervisor

Xc: NMOCD – Santa Fe
Bureau of Land Management

Production Allocation Documentation

Davis #8E

Production Allocation

Based on Remaining Reserves

Mesaverde Recomplete September 2001

GAS

	<u>RR</u>	<u>Allocation %</u>
Dakota	808.8	48%

All	<u>1678.5</u>	
-----	---------------	--

Mesaverde	869.7	52%
-----------	-------	-----

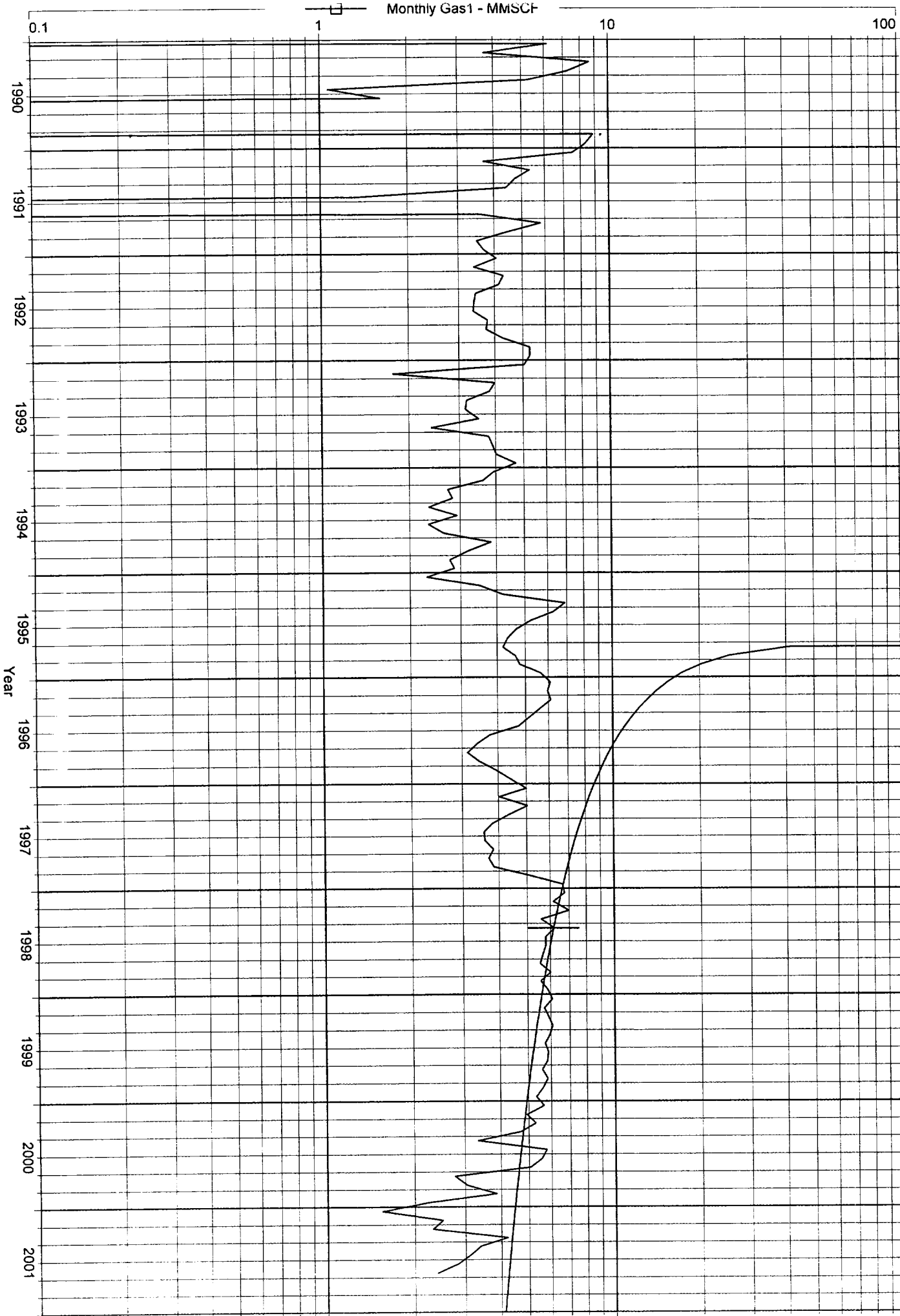
Condensate

Because condensate did not increase with the addition of the Mesaverde formation, condensate has been allocated solely to the Dakota formation.

Operator: BURLINGTON RESOURCES OG CO LP
Field: BASIN DAKOTA (PRORATED GAS)
Zone:
Type: Gas
Group: Well::28_5LW

dk (Rate-Time)
qi: 6.20925 MMSCF, May, 1998
qf: 0.456994 MMSCF, Mar, 2042
di(tHyp): 14
RR: 808.787 MMSCF

Production Cums
Oil: 0 MSTB
Gas: 1559.43 MMSCF
Water: 0 MSTB
Cond: 0 MSTB



DAVIS 8E ALL (DAVIS 8E MV) Data: Oct 2001-Mar 2002

Operator: BURLINGTON RESOURCES OG CO LP
Field:
Zone:
Type: Gas
Group: Well: 28_SLW

all (Rate-Time)
qi: 17.045 MMSCF, Dec, 2001
qf: 0.45686 MMSCF, Dec, 2053
dl(hyp): 40
RR: 1678.47 MMSCF

Production Cums
Oil: 0 MSTB
Gas: 97 MMSCF
Water: 0 MSTB
Cond: 0 MSTB

