

UNITED STATES  
DEPARTMENT OF THE INTERIOR  
GEOLOGICAL SURVEY

APPLICATION FOR PERMIT TO DRILL, DEEPEN, OR PLUG BACK

1a. TYPE OF WORK DRILL ☒ DEEPEN ☐ PLUG BACK ☐

b. TYPE OF WELL OIL WELL ☐ GAS WELL ☒ OTHER ☐ SINGLE ZONE ☐ MULTIPLE ZONE ☒

2. NAME OF OPERATOR  
Supron Energy Corporation

3. ADDRESS OF OPERATOR  
P.O. Box 808, Farmington, New Mexico 87401

4. LOCATION OF WELL (Report location clearly and in accordance with any State requirements.\*)  
At surface 880 Ft./North; 900 Ft./West line

At proposed prod. zone Same as above

14. DISTANCE IN MILES AND DIRECTION FROM NEAREST TOWN OR POST OFFICE\*  
3 Miles North of Cedar Hill, New Mexico

15. DISTANCE FROM PROPOSED\*  
LOCATION TO NEAREST  
PROPERTY OR LEASE LINE, FT.  
(Also to nearest drlg. unit line, if any) 880

16. NO. OF ACRES IN LEASE  
1680

18. DISTANCE FROM PROPOSED LOCATION\*  
TO NEAREST WELL, DRILLING, COMPLETED,  
OR APPLIED FOR, ON THIS LEASE, FT. 2650

19. PROPOSED DEPTH  
7960

17. NO. OF ACRES ASSIGNED  
TO THIS WELL  
w/ 315.56

20. ROTARY OR CABLE TOOLS  
Rotary

21. ELEVATIONS (Show whether DF, RT, GR, etc.)  
6282 GR

22. APPROX. DATE WORK WILL START\*  
12-25-79

PROPOSED CASING AND CEMENTING PROGRAM

SIZE OF HOLE	SIZE OF CASING	WEIGHT PER FOOT	SETTING DEPTH	QUANTITY OF CEMENT
13-3/4"	10-3/4"	32.75#	250	200 Sx.
9-7/8"	7-5/8"	26.40#	3400	200 Sx.
6-3/4"	5-1/2"	15.50#	7960	500 Sx.

We propose to drill this well through the Pictured Cliffs to the intermediate depth of about 3400 ft. with mud. We will drill from about 3400 ft. through the Dakota at about 7960 ft. using air or natural gas. 7-5/8" Casing will be run to about 3400 ft. A 5-1/2" liner will be run from 7960 ft. to about 3250 ft. The Dakota zone will be perforated and frac'd. and a bridge plug set below the Mesaverde. The Mesaverde zone will be perforated and frac'd. The bridge plug will be removed and a packer set between the Mesaverde and Dakota zones. Tubing will be run to both zones.

This lease is in the process of being communitized.

The well will be on acreage dedicated to a gas transporter.

IN ABOVE SPACE DESCRIBE PROPOSED PROGRAM: If proposal is to deepen or plug back, give data on present productive zone and proposed new productive zone. If proposal is to drill or deepen directionally, give pertinent data on subsurface locations and measured and true vertical depths. Give blowout preventer program, if any.

24. SIGNED Kenneth E. Roddy  
(This space for Federal or State office use)

TITLE Production Superintendent

DATE October 18, 1979

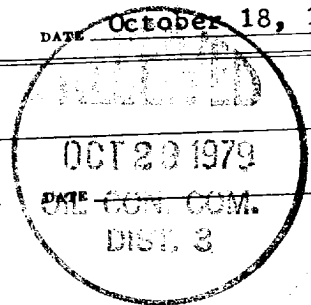
PERMIT NO. \_\_\_\_\_

APPROVAL DATE \_\_\_\_\_

APPROVED BY \_\_\_\_\_  
CONDITIONS OF APPROVAL, IF ANY:

TITLE \_\_\_\_\_

NMOCC



MU NWU 7-460 ak Frank

**NEW MEXICO OIL CONSERVATION COMMISSION  
WELL LOCATION AND ACREAGE DEDICATION PLAT**

Supersedes C-128  
Effective 1-1-65

All distances must be from the outer boundaries of the Section.

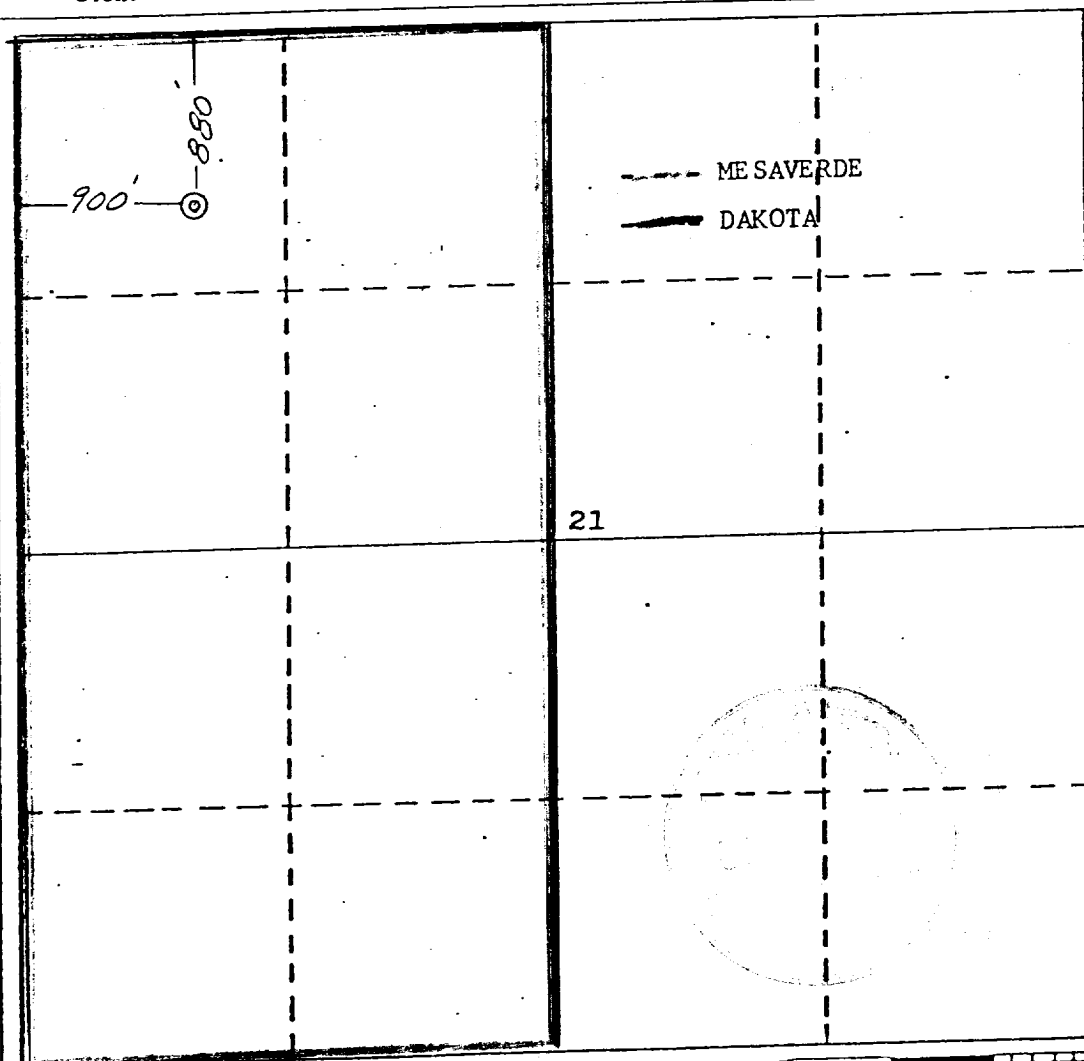
Operator <b>SUPRON ENERGY CORPORATION</b>			Lease <b>PAYNE</b>		Well No. <b>2 A</b>
Unit Letter <b>D</b>	Section <b>21</b>	Township <b>32 NORTH</b>	Range <b>10 WEST</b>	County <b>SAN JUAN</b>	
Actual Footage Location of Well: <b>880</b> feet from the <b>NORTH</b> line and <b>900</b> feet from the <b>WEST</b> line					
Ground Level Elev. <b>6282</b>	Producing Formation <b>ME SAVERDE</b>		Pool <b>BLANCO BASIN</b>		Dedicated Acreage: <b>W1/2 315.56</b> Acres

1. Outline the acreage dedicated to the subject well by colored pencil or hatchure marks on the plat below.
2. If more than one lease is dedicated to the well, outline each and identify the ownership thereof (both as to working interest and royalty).
3. If more than one lease of different ownership is dedicated to the well, have the interests of all owners been consolidated by communitization, unitization, force-pooling, etc?

☐ Yes ☐ No If answer is "yes," type of consolidation \_\_\_\_\_

If answer is "no," list the owners and tract descriptions which have actually been consolidated. (Use reverse side of this form if necessary.) \_\_\_\_\_

No allowable will be assigned to the well until all interests have been consolidated (by communitization, unitization, forced-pooling, or otherwise) or until a non-standard unit, eliminating such interests, has been approved by the Commission.



**CERTIFICATION**

I hereby certify that the information contained herein is true and complete to the best of my knowledge and belief.

*Rudy D. Motto*  
Name

**Rudy D. Motto**

Position

**Area Superintendent**

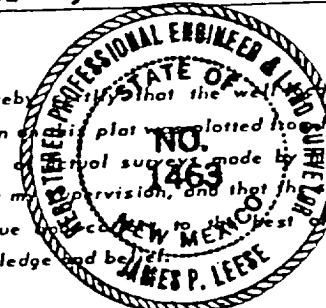
Company

**SUPRON ENERGY CORPORATION**

Date

**April 11, 1979**

I hereby certify that the well location shown on this plat was plotted from field notes of actual survey made by me or under my supervision, and that the same is true to the best of my knowledge and belief.



Date Surveyed

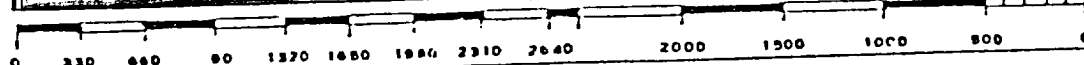
**27 FEBRUARY 1979**

Registered Professional Engineer and/or Land Surveyor

*James P. Leese*  
**James P. Leese**

Certificate No.

**1463**



SUPRON ENERGY CORPORATION

PAYNE NO. 2-A

NW/4 Sec. 21, T-32N, R-10W  
San Juan County, New Mexico

SUPPLEMENT TO FORM 9-331C

1. The geologic name of the surface formation is "Wasatch".
2. The estimated tops of important geologic markers are:
  - A. Base of Ojo Alamo - - - - - 2035
  - B. Top of Fruitland - - - - - 2800
  - C. Top of Pictured Cliffs - - - 3081
  - D. Top of Cliff House - - - - - 4957
  - E. Top of Point Lookout - - - - 5376
  - F. Base of Greenhorn - - - - - 7544
  - G. Top of Dakota - - - - - 7607
3. The estimated depth at which anticipated water, oil, or other mineral bearing formations are expected to be encountered are:
  - A. Base of Ojo Alamo - - - - - 2035 - - Water
  - B. Top of Fruitland - - - - - 2800 - - Gas
  - C. Top of Pictured Cliffs - - - 3081 - - Gas
  - D. Top of Cliff House - - - - - 4957 - - Gas
  - E. Top of Point Lookout - - - - 5376 - - Gas
  - F. Top of Dakota - - - - - 7607 - - Gas
4. The casing program is shown on form 9-331C and all casing is new.
5. The lessee's pressure control equipment schematics are attached, along with minimum specifications, testing procedures, and frequencies.
6. The type, estimated volumes, and characteristics of the circulating media are as follows:
  - A. 0 - 250 Ft. - Natural mud
  - B. 250 - 3400 Ft. - Permaloid, non-dispersed mud containing 167 sx. gel, 67 sx. permaloid, 10 sx. C.M.C.
  - C. 3400- 7960 Ft. - Air or natural gas
7. The auxiliary equipment to be used will be floats at the bit and a sub on the floor with a full-opening valve to be stabbed into the drill pipe when the kelly is not in the string.
8. This well is in an area which is partially developed; therefore we will not have a testing and coring program. The logging program will be as follows:
  - A. E. S. Induction
  - B. Gamma Ray Density
  - C. Gamma Ray Correlation
  - D. Cement Bond Log
9. We do not expect to find any abnormal pressures, temperatures or hydrogen sulphide problems in this partially developed area.
10. The anticipated starting date for this well is 12-25-79.

SUPRON ENERGY CORPORATION

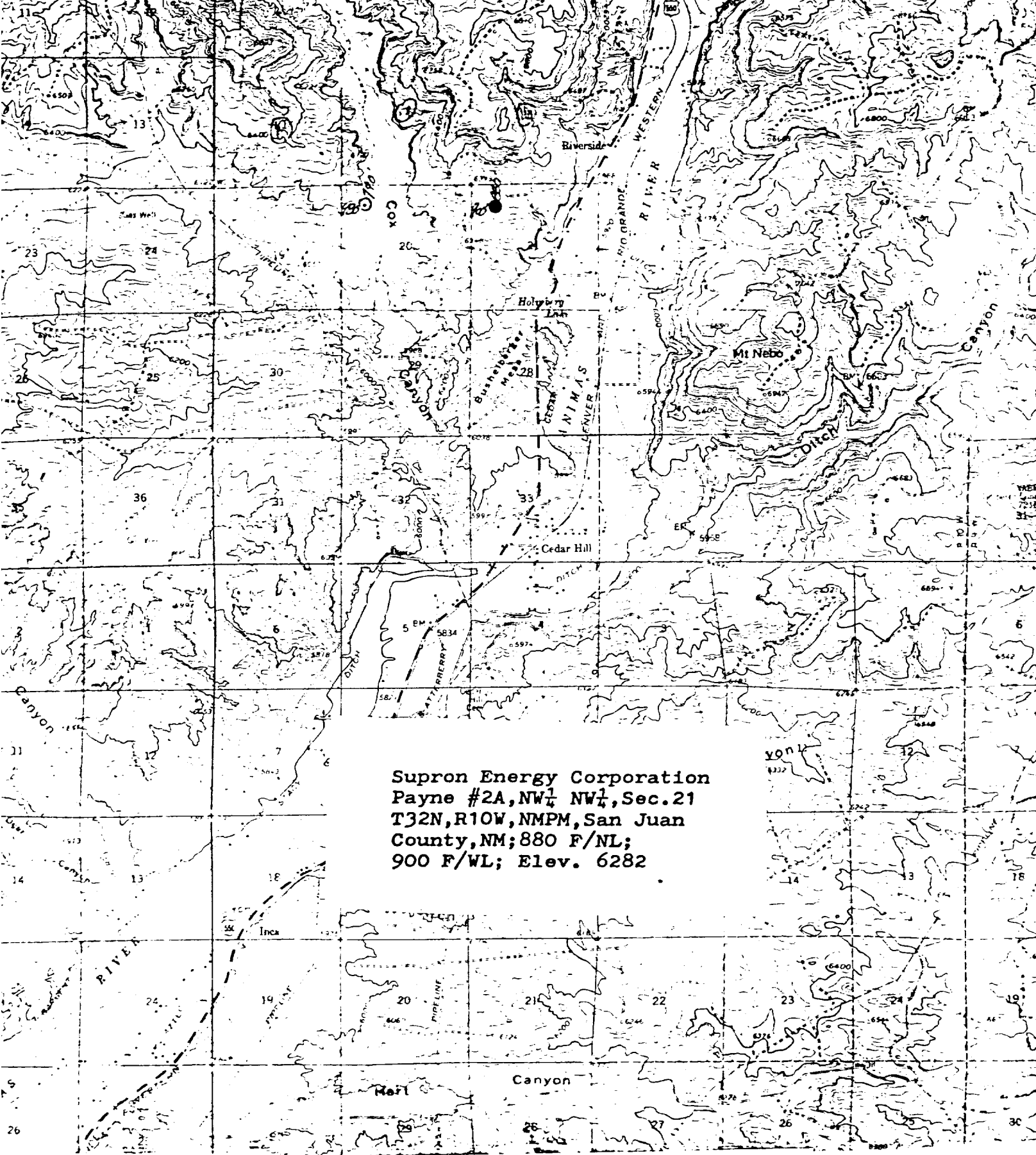
PAYNE NO. 2-A

NW/4 Sec. 21, T-32N, R-10W  
San Juan County, New Mexico

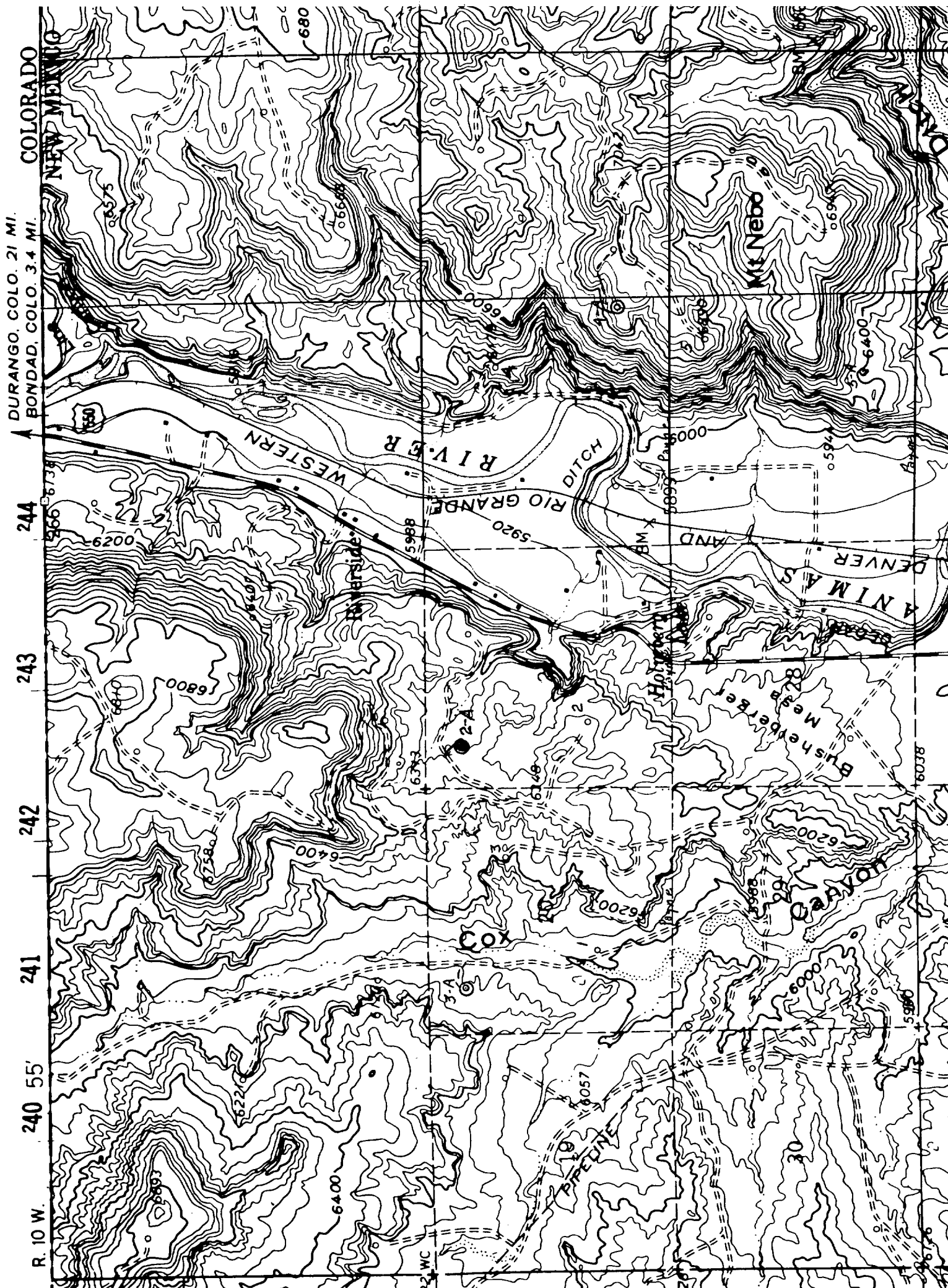
The following attachments are included with this application:

1. Topographical map showing proposed location and access road.
2. Planned access road is 800 feet long and will be no wider than 20 ft. The road will follow the natural contours of the land and will have drainage facilities installed to meet the requirements of NTL-6. No extra surfacing materials will be used.
3. Map showing existing producing facilities and access roads.
4. Location of surface equipment if required.
5. Drilling and completion water will be obtained from Austin Decker's Water Hole.
6. All pits will be fenced and constructed in such a way as to prevent litter on the locations.
7. We will dispose of all waste by placing it in the reserve pit and burying it when the well is completed.
8. There will be no camp at or near the well site.
9. There will be no air strip.
10. A plat is attached showing the location of the rig, mud tanks, reserve pit, burn pit, etc.
11. A letter of certification is attached. The operator representative for compliance purposes is Rudy D. Motto, Area Superintendent, P.O. Box 808, Farmington, New Mexico 87401. Phone (505) 325-3587.
12. After the well is completed, the location will be cleaned up, and bladed. The reserve pit will be allowed to dry and then filled and restored to its natural state.
13. The soil is sandy loam with principal vegetation being Sagebrush, Pinon, Juniper.

LA PLATA CO 27 R 11 W R 10 W 240 55 241 242 243 244 DURANGO COLO 21 MI BONDAD COLO 34 MI COLORADO 50 248 249  
SAN JUAN CO



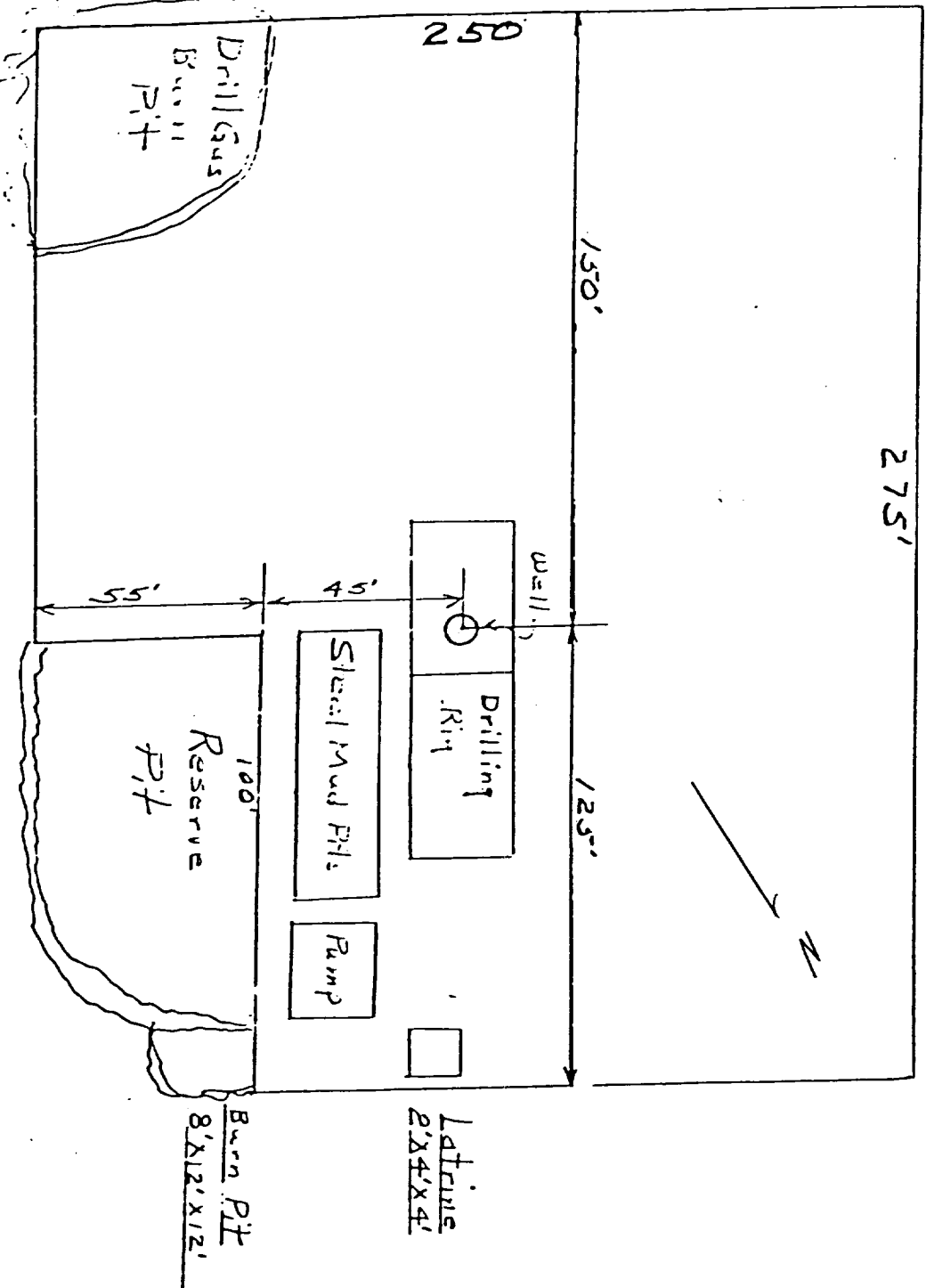
Supron Energy Corporation  
Payne #2A, NW $\frac{1}{4}$  NW $\frac{1}{4}$ , Sec. 21  
T32N, R10W, NMPM, San Juan  
County, NM; 880 F/NL;  
900 F/WL; Elev. 6282



SUPRON ENERGY CORPORATION  
LOCATION AND EQUIPMENT LAYOUT

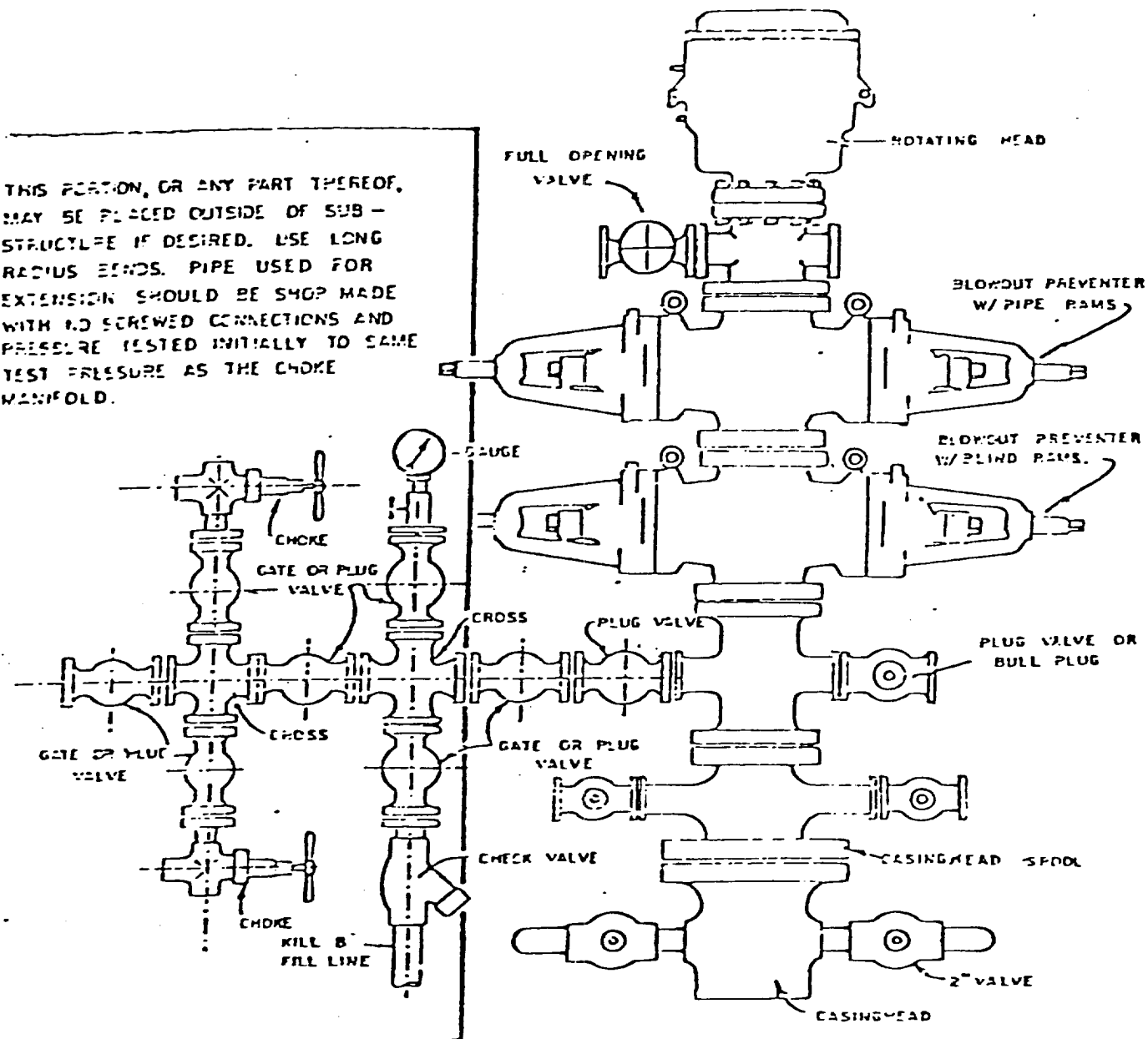
PAYNE NO. 2-A

880 Feet from the North line and 900 feet from the West line of Section 21, Township 32 North, Range 10 West, N.M.P.M., San Juan County, New Mexico.



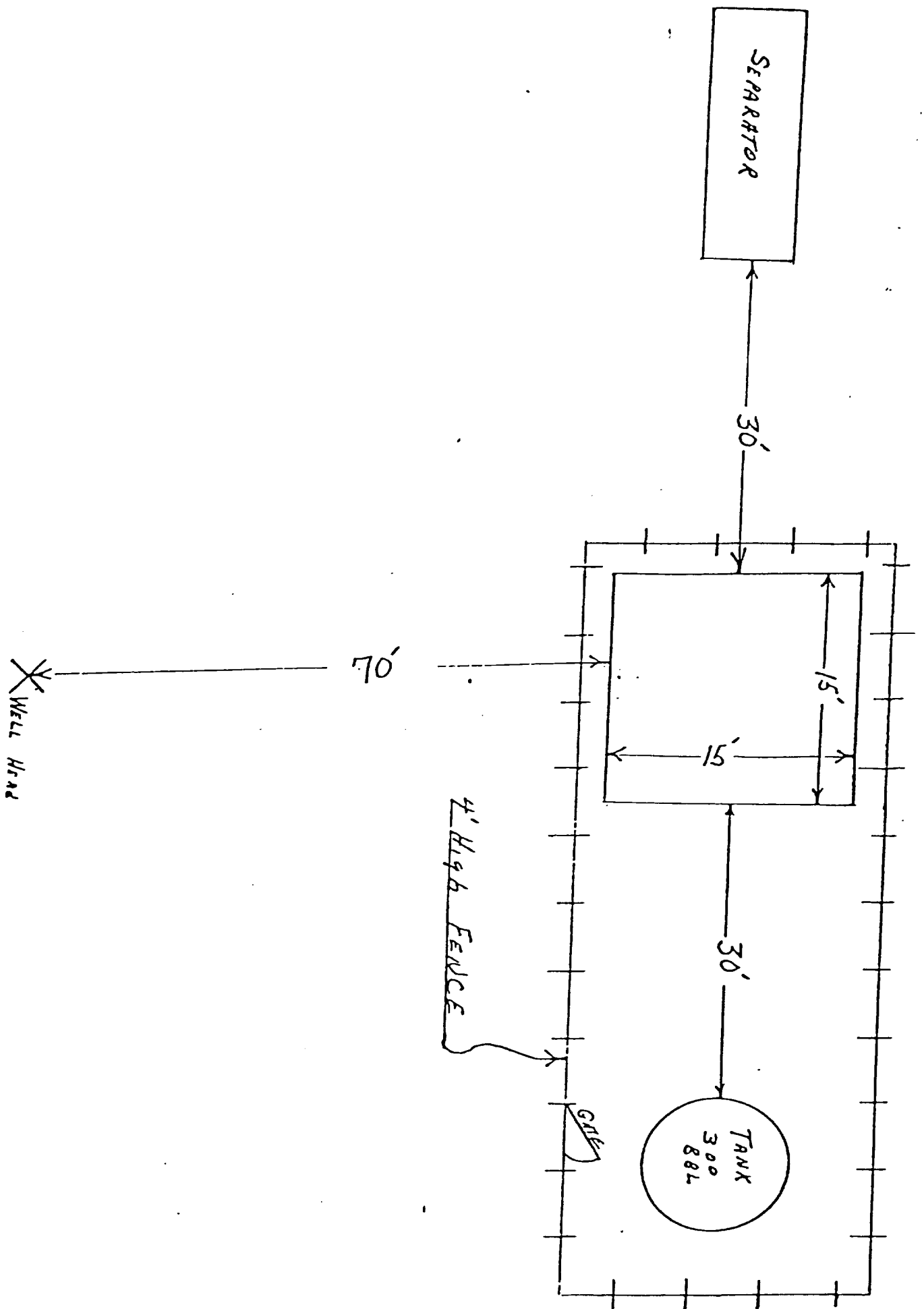
Blowout Preventer will be tested daily and prior to drilling out with the results to be logged on the drillers report.

The B.O.P. and all valve and fittings are rated at 3000 psi working pressure, and hydraulically operated



BLOWOUT PREVENTER HOCKUP





SUPRON ENERGY CORPORATION  
Post Office Box 808  
FARMINGTON, NEW MEXICO 87401

I hereby certify that I, or persons under my direct supervision, have inspected the proposed drillsite and access route; that I am familiar with the conditions which presently exist; that the statements made in this plan are, to the best of my knowledge, true and correct; and, that the work associated with the operations proposed herein will be performed by SUPRON ENERGY CORPORATION and its contractors subcontractors in conformity with this plan and the terms and conditions under which it is approved.

SUPRON ENERGY CORPORATION

A handwritten signature in cursive script, reading "Rudy D. Motto".

Rudy D. Motto  
Area Superintendent  
Phone: 325-3587

NEW MEXICO OIL CONSERVATION COMMISSION  
WELL LOCATION AND ACREAGE DEDICATION PLAT

Form C-102  
Supersedes C-128  
Effective 1-1-65

All distances must be from the outer boundaries of the Section.

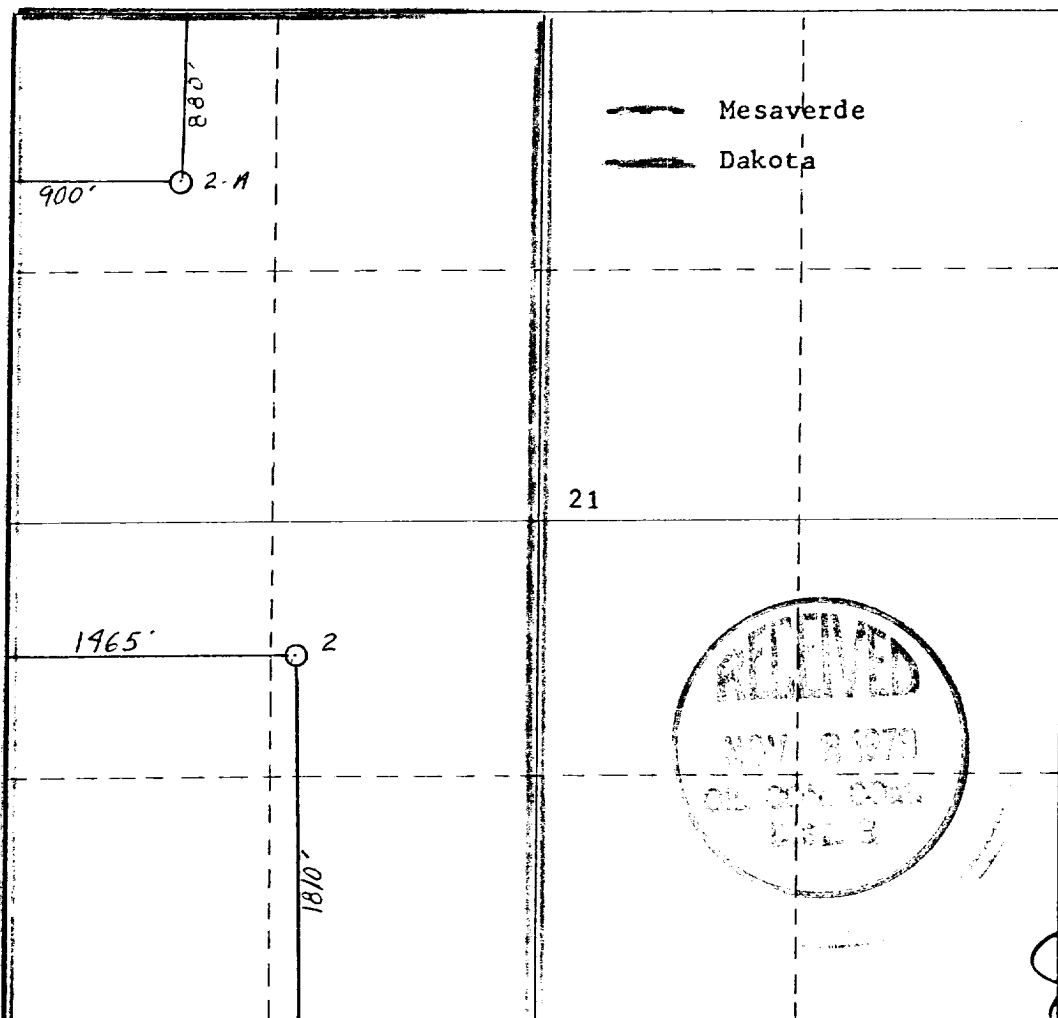
Operator <b>SUPRON ENERGY CORPORATION</b>		Lease <b>PAYNE</b>		Well No. <b>2-A</b>
Unit Letter <b>D</b>	Section <b>21</b>	Township <b>32 NORTH</b>	Range <b>10 WEST</b>	County <b>SAN JUAN</b>
Actual Footage Location of Well: <b>880</b> feet from the <b>NORTH</b> line and <b>900</b> feet from the <b>WEST</b> line				
Ground Level Elev. <b>6282</b>	Producing Formation <b>ME SAVERDE DAKOTA</b>	Pool <b>BLANCO BASIN</b>	Dedicated Acreage: <b>W1/2 315.56</b> Acres	

1. Outline the acreage dedicated to the subject well by colored pencil or hachure marks on the plat below.
2. If more than one lease is dedicated to the well, outline each and identify the ownership thereof (both as to working interest and royalty).
3. If more than one lease of different ownership is dedicated to the well, have the interests of all owners been consolidated by communitization, unitization, force-pooling, etc?

☐ Yes ☒ No If answer is "yes," type of consolidation Dakota

If answer is "no," list the owners and tract descriptions which have actually been consolidated. (Use reverse side of this form if necessary.)

No allowable will be assigned to the well until all interests have been consolidated (by communitization, unitization, forced-pooling, or otherwise) or until a non-standard unit, eliminating such interests, has been approved by the Commission.



CERTIFICATION

I hereby certify that the information contained herein is true and complete to the best of my knowledge and belief.

*Rudy D. Motto*

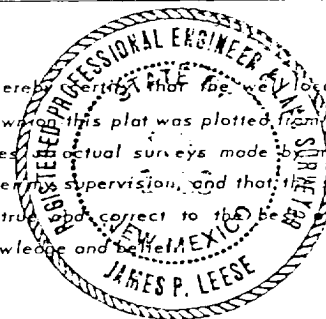
Name  
**Rudy D. Motto**

Position  
**Area Superintendent**

Company  
**SUPRON ENERGY CORPORATION**

Date  
**October 30, 1979**

I hereby certify that the well location shown on this plat was plotted from field notes, actual surveys made by me or under my supervision, and that the same is true and correct to the best of my knowledge and belief.



Date Surveyed  
**27 February 1979**

Registered Professional Engineer  
and/or Land Surveyor

*James P. Leese*

Certificate No.  
**1463**

NMOCC