

All distances must be from the outer boundaries of the Section

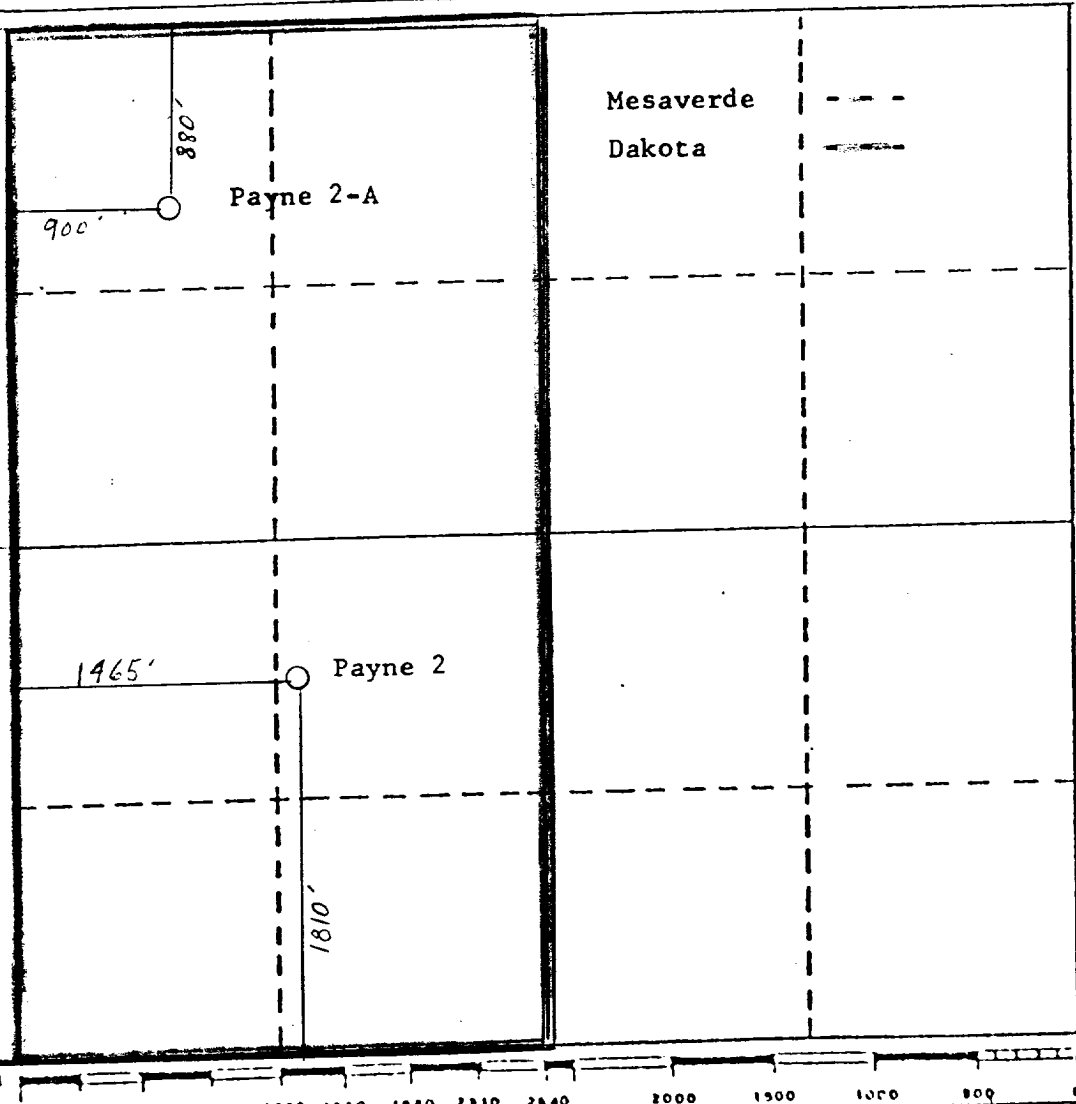
Operator <b>SUPRON ENERGY CORPORATION</b>		Lease <b>PAYNE</b>		Well No. <b>2-A</b>
Unit Letter <b>D</b>	Section <b>21</b>	Township <b>32 North</b>	Range <b>10 West</b>	County <b>San Juan</b>
Actual Postage Location of Well: 880 feet from the <b>NORTH</b> line and 900 feet from the <b>WEST</b> line				
Ground Level Elev. <b>6282</b>	Producing Formation <b>ME SAVERDE DAKOTA</b>	Pool <b>BLANCO BASIN</b>	Dedicated Acres <b>W/2 315.56</b> Acres	

1. Outline the acreage dedicated to the subject well by colored pencil or hachure marks on the plat below.
2. If more than one lease is dedicated to the well, outline each and identify the ownership thereof (both as to working interest and royalty).
3. If more than one lease of different ownership is dedicated to the well, have the interests of all owners been consolidated by communitization, unitization, force-pooling, etc?

Yes  No If answer is "yes," type of consolidation Dakota - Communitization

If answer is "no," list the owners and tract descriptions which have actually been consolidated. (Use reverse side of this form if necessary.) \_\_\_\_\_

No allowable will be assigned to the well until all interests have been consolidated (by communitization, unitization, forced-pooling, or otherwise) or until a non-standard unit, eliminating such interests, has been approved by the Division.



Mesaverde ---  
Dakota ---

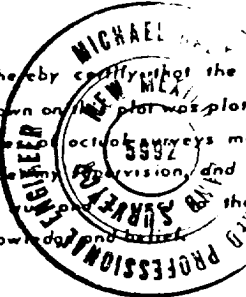
**CERTIFICATION**

I hereby certify that the information contained herein is true and complete to the best of my knowledge and belief.

*Kenneth E. Roddy*

Name	Kenneth E. Roddy
Position	Area Superintendent
Company	Supron Energy Corporation
Date	September 26, 1980

I hereby certify that the well location shown on the plat was plotted from field notes of actual surveys made by me or under my supervision, and that the same is correct to the best of my knowledge and belief.



Date Surveyed	27 February 1979
Registered Professional Engineer and/or Land Surveyor	<i>Michael Roddy</i>
Certificate No.	5992