

UNITED STATES
DEPARTMENT OF THE INTERIOR
GEOLOGICAL SURVEY

30-045-23911

APPLICATION FOR PERMIT TO DRILL, DEEPEN, OR PLUG BACK

1a. TYPE OF WORK

DRILL ☒

DEEPEN ☐

PLUG BACK ☐

b. TYPE OF WELL

OIL WELL ☐

GAS WELL ☒

OTHER

SINGLE ZONE ☐

MULTIPLE ZONE ☒

2. NAME OF OPERATOR

Supron Energy Corporation

3. ADDRESS OF OPERATOR

P.O. Box 808, Farmington, New Mexico 87401

4. LOCATION OF WELL (Report location clearly and in accordance with any State requirements.)*

At surface

1100 Ft./South; 135 ft./East line

At proposed prod. zone

Same as above

14. DISTANCE IN MILES AND DIRECTION FROM NEAREST TOWN OR POST OFFICE*

2 Miles North of Cedar Hill, New Mexico

15. DISTANCE FROM PROPOSED*

LOCATION TO NEAREST PROPERTY OR LEASE LINE, FT.
(Also to nearest drlg. unit line, if any)

135

16. NO. OF ACRES IN LEASE

1680

17. NO. OF ACRES ASSIGNED TO THIS WELL

E/302.97

18. DISTANCE FROM PROPOSED LOCATION* TO NEAREST WELL, DRILLING, COMPLETED, OR APPLIED FOR, ON THIS LEASE, FT.

2190

19. PROPOSED DEPTH

8670

20. ROTARY OR CABLE TOOLS

Rotary

21. ELEVATIONS (Show whether DF, RT, GR, etc.)

6890 GR

22. APPROX. DATE WORK WILL START*

2/15/80

23. PROPOSED CASING AND CEMENTING PROGRAM

SIZE OF HOLE	SIZE OF CASING	WEIGHT PER FOOT	SETTING DEPTH	QUANTITY OF CEMENT
13-3/4"	10-3/4"	32.75#	250	200 Sx.
9-7/8"	7-5/8"	26.40#	4000	200 Sx.
6-3/4"	5-1/2"	15.50#	8670	600 Sx.

We propose to drill this well through the Pictured Cliffs to an intermediate depth of approximately 4000 ft. with mud and run 7-5/8" casing to bottom. We will then drill through the Dakota to approximately 8670 ft. using air or natural gas and run a 5-1/2" liner from about 3850 to about 8670 ft. The Dakota zone will be perforated and frac'd and a bridge plug set below the Mesaverde. The Mesaverde will be perforated and frac'd. The bridge plug will be removed and a packer set between the Mesaverde and Dakota zones. Tubing will be run to both zones.

This lease is in the process of being communitized.

The well will be drilled on acreage dedicated to a gas transporter.

RECEIVED

OCT 22 1979

U. S. GEOLOGICAL SURVEY
FARMINGTON, N. M.

IN ABOVE SPACE DESCRIBE PROPOSED PROGRAM: If proposal is to deepen or plug back, give data on present productive zone and proposed new productive zone. If proposal is to drill or deepen directionally, give pertinent data on subsurface locations and measured and true vertical depths. Give blowout preventer program, if any.

24.

SIGNED

Kenneth E. Roddy

TITLE Production Superintendent

DATE October 18, 1979

(This space for Federal or State office use)

PERMIT NO.

APPROVAL DATE

APPROVED BY

TITLE

CONDITIONS OF APPROVAL, IF ANY:

My. NWU 3-457

oh3 and
NMOCC

DATE

OCT 29 1979

OIL CON. DIST.

NEW MEXICO OIL CONSERVATION COMMISSION
WELL LOCATION AND ACREAGE DEDICATION PLAT

Form C-102
Supersedes C-121
Effective 1-1-63

All distances must be from the outer boundaries of the Section.

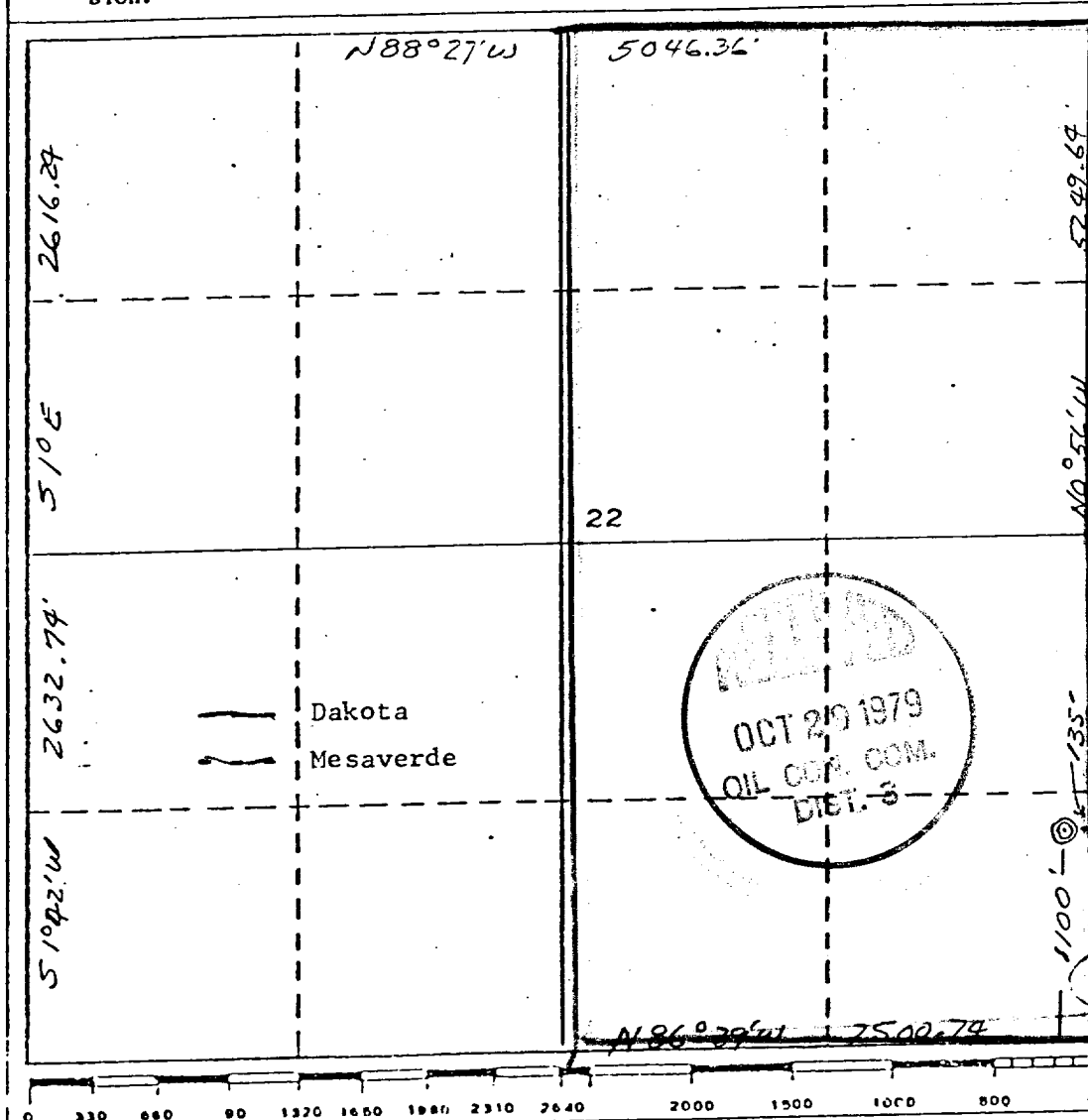
Operator SUPRON ENERGY CORPORATION		Lease PAYNE		Well No. 4-A
Unit Letter P	Section 22	Township 32 NORTH	Range 10 WEST	County SAN JUAN
Actual Footage Location of Well: 1100 feet from the SOUTH line and 135 feet from the EAST line				
Ground Level Elev. 6890	Producing Formation MESAVERDE DAKOTA	Pool BLANCO BASIN	Dedicated Acreage: E1/2 302.97 Acres	

1. Outline the acreage dedicated to the subject well by colored pencil or hatchure marks on the plat below.
2. If more than one lease is dedicated to the well, outline each and identify the ownership thereof (both as to working interest and royalty).
3. If more than one lease of different ownership is dedicated to the well, have the interests of all owners been consolidated by communitization, unitization, force-pooling, etc?

☐ Yes ☐ No If answer is "yes," type of consolidation _____

If answer is "no," list the owners and tract descriptions which have actually been consolidated. (Use reverse side of this form if necessary.) _____

No allowable will be assigned to the well until all interests have been consolidated (by communitization, unitization, forced-pooling, or otherwise) or until a non-standard unit, eliminating such interests, has been approved by the Commission.



CERTIFICATION

I hereby certify that the information contained herein is true and complete to the best of my knowledge and belief.

Kenneth E. Roddy

Name

Kenneth E. Roddy

Position

Production Superintendent

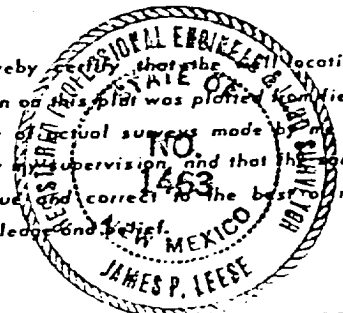
Company

SUPRON ENERGY CORPORATION

Date

October 18, 1979

I hereby certify that the location shown on this plat was plotted from field notes of actual surveys made by me or under my supervision, and that the same is true and correct to the best of my knowledge and belief.



Date Surveyed

6 April 1979

Registered Professional Engineer and/or Land Surveyor

James P. Leese
James P. Leese

Certificate No.

1463

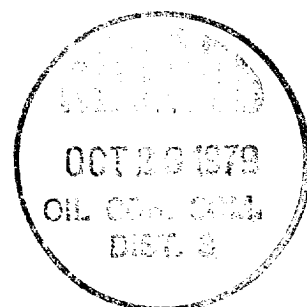
SUPRON ENERGY CORPORATION

PAYNE NO. 4-A

SE/4 Sec. 22, T-32N, R-10W
San Juan County, New Mexico

SUPPLEMENT TO FORM 9-331C

1. The Geologic name of the surface formation is "Wasatch".
2. The estimated tops of important Geologic markers are:
 - A. Base of Ojo Alamo - - - - - 3075
 - B. Top of Fruitland - - - - - 3420
 - C. Top of Pictured Cliffs - - - 3700
 - D. Top of Cliff House - - - - - 5570
 - E. Top of Point Lookout - - - - 5980
 - F. Base of Greenhorn - - - - - 7960
 - G. Top of Dakota - - - - - 8220
3. The estimated depth at which anticipated water, oil, or other mineral bearing formations are expected to be encountered are:
 - A. Base of Ojo Alamo - - - - - 3075 - - - Water
 - B. Top of Fruitland - - - - - 3420 - - - Gas
 - C. Top of Pictured Cliffs - - - 3700 - - - Gas
 - D. Top of Cliff House - - - - - 5570 - - - Gas
 - E. Top of Point Lookout - - - - 5980 - - - Gas
 - F. Top of Dakota - - - - - 8220 - - - Gas
4. The casing program is shown on form 9-331C and all casing is new.
5. The lessee's pressure - control equipment schematics are attached, along with minimum specifications, testing procedures, and frequencies.
6. The type, estimated volumes, and characteristics of the circulating media are as follows:
 - A. 0 - 250 Ft. Natural mud.
 - B. 250 - 4000 Ft. Permaloid non-dispersed mud containing 167 sx. gel, 67 sx permaloid, 10 sx. C.M.C.
 - C. 4000 - 8670 Ft. Air or natural gas
7. The auxiliary equipment to be used will be floats at the bit and a sub on the floor with a full-opening valve to be stabbed into the drill pipe when the kelly is not in the string.
8. This well is in an area which is partially developed; therefore we will not have a testing and coring program. The logging program will be as follows:
 - A. E. S. Induction
 - B. Gamma Ray Density
 - C. Gamma Ray Correlation
 - D. Cement Bond Log
9. We do not expect to find any abnormal pressures, temperatures or hydrogen sulphide problems in this partially - developed area.
10. The anticipated starting date for this well is 2-15-80.



SUPRON ENERGY CORPORATION

PAYNE NO. 4-A

SE/4 Sec. 22, T-32N, R-10W
San Juan County, New Mexico

The following attachments are included with this application:

1. Topographical map showing proposed location and access road.
2. Planned access road is 1000 feet long and will be no wider than 20 feet. The road will follow the natural contours of the land and will have drainage facilities installed to meet the requirements of NTL-6. No extra surfacing materials will be used.
3. Map showing existing producing facilities and access roads.
4. Location of surface equipment if required.
5. Drilling and completion water will be obtained from Austin Decker's Water Hole.
6. All pits will be fenced and constructed in such a way as to prevent litter on the location.
7. We will dispose of all waste by placing it in the reserve pit and burying it when the well is completed.
8. There will be no camp at or near the well site.
9. There will be no air strip.
10. A plat is attached showing the location of the rig, mud tanks, reserve pit, burn pit, etc
11. A letter of certification is attached. The operator representative for compliance purposes is Rudy D. Motto, Area Superintendent, P.O. Box 808, Farmington, New Mexico 87401. Phone (505) 325-3587.
12. After the well is completed, the location will be cleaned up, and bladed. The reserve pit will be allowed to dry and then filled and restored to its natural state.
13. The soil is sandy loam with principal vegetation being Sagebrush, Pinon, Juniper.

SUPRON ENERGY CORPORATION

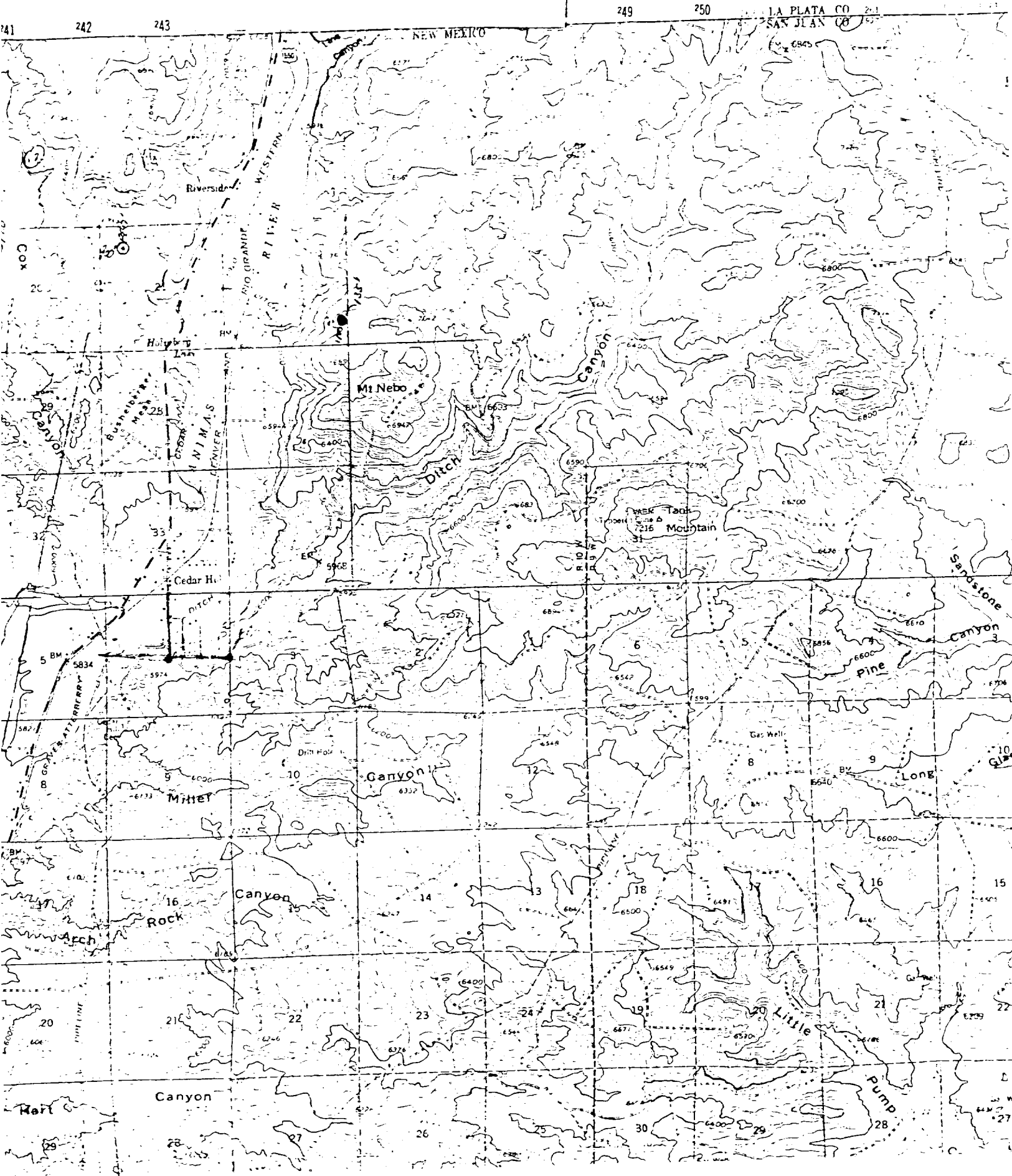
PAYNE #4-A

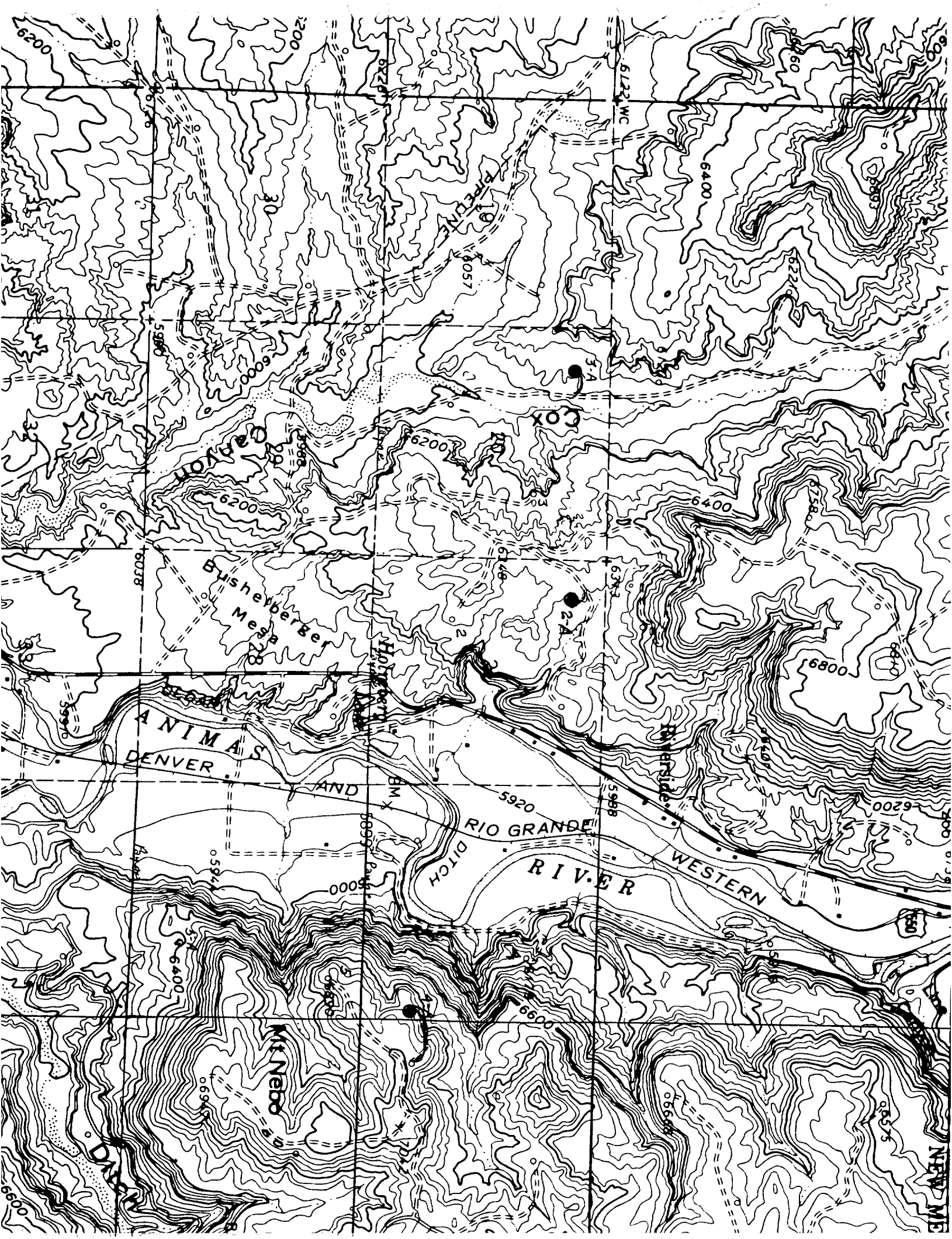
SE $\frac{1}{4}$ SE $\frac{1}{4}$ Sec. 22, T32N, R10W
San Juan County, New Mexico

AZTEC QUAD

NEW MEX

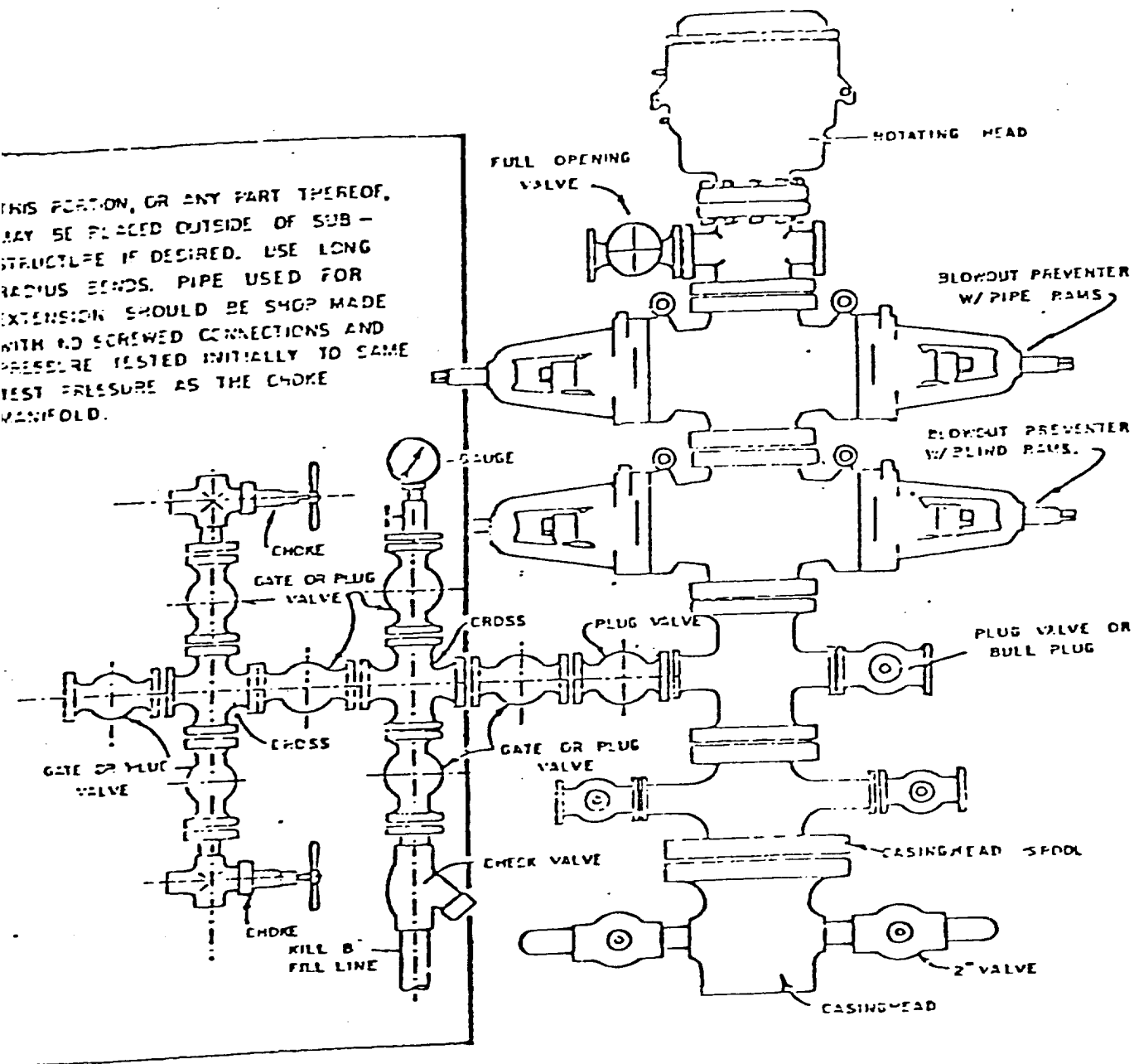
15 MINUTE SERIES (



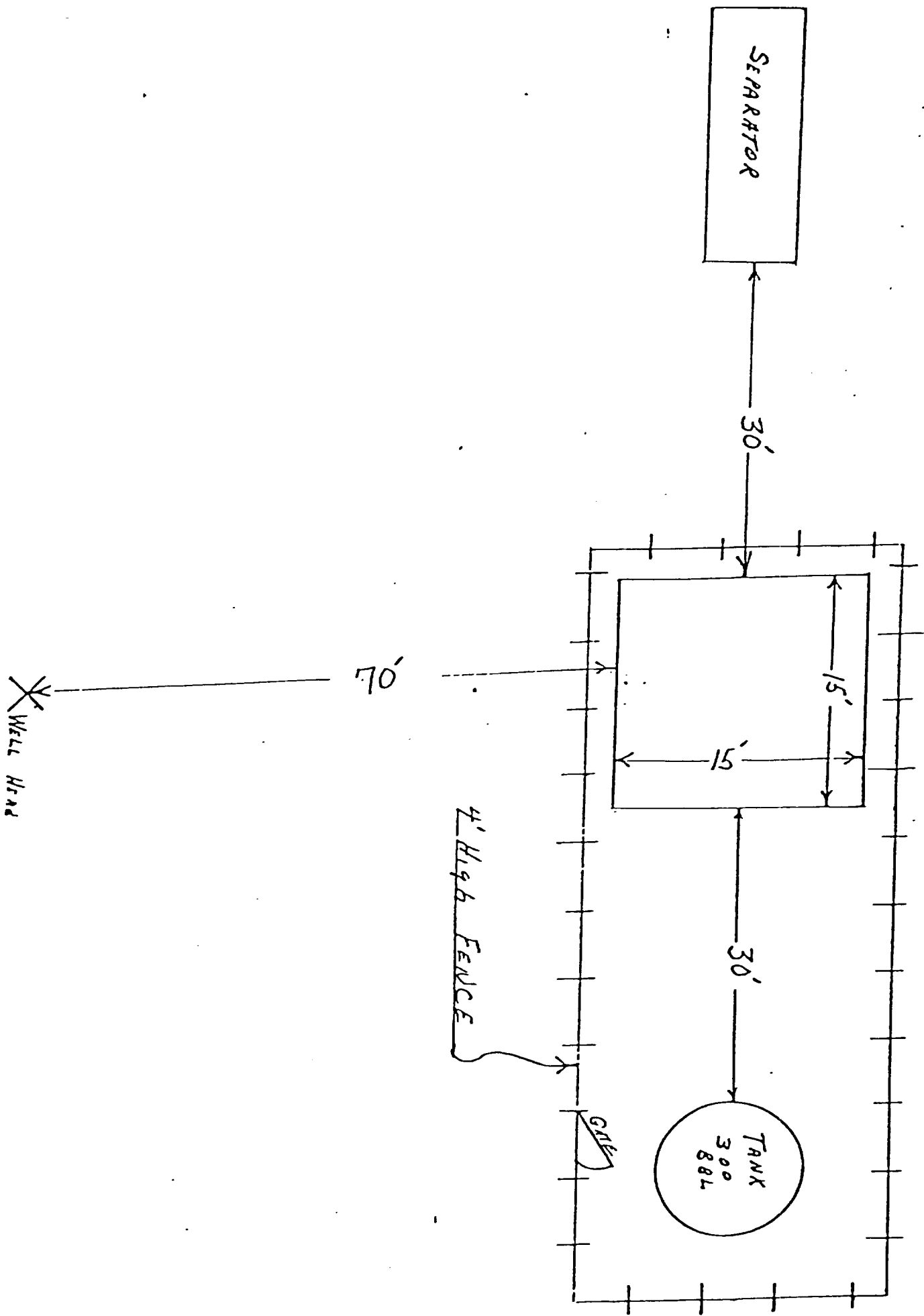


Blowout Preventer will be tested daily and prior to drilling out with the results to be logged on the drillers report.

The B.O.P. and all valve and fittings are rated at 3000 psi working pressure, and hydraulically operated



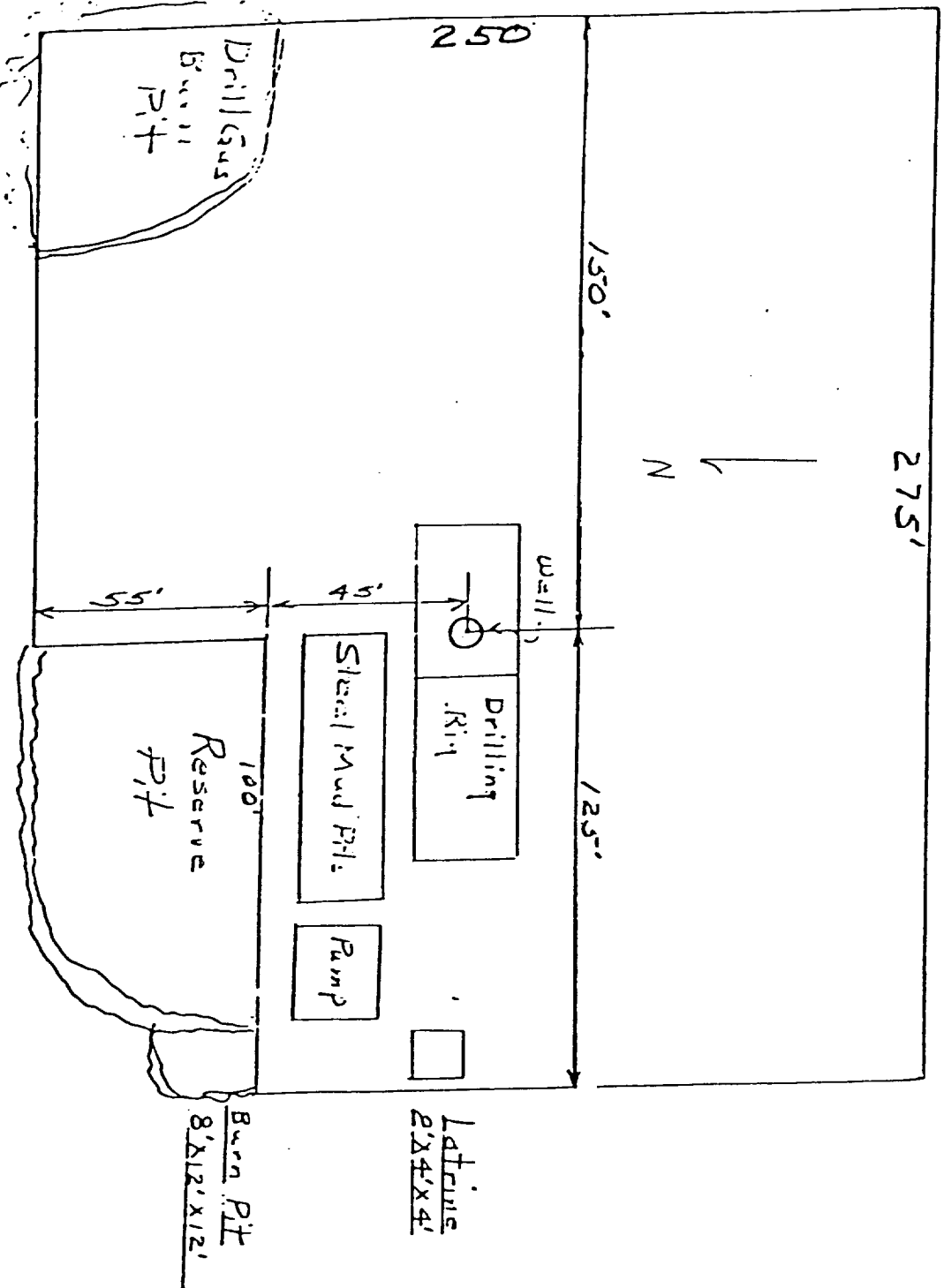
BLOWOUT PREVENTER HOCKUP



SUPRON ENERGY CORPORATION
LOCATION AND EQUIPMENT LAYOUT

PAYNE NO. 4-A

1100 Feet from the South line and 135 feet from the East line of Section 22, Township 32 North, Range 10 West, N.M.P.M., San Juan County, New Mexico.



SUPRON ENERGY CORPORATION
Post Office Box 808
FARMINGTON, NEW MEXICO 87401

I hereby certify that I, or persons under my direct supervision, have inspected the proposed drillsite and access route; that I am familiar with the conditions which presently exist; that the statements made in this plan are, to the best of my knowledge, true and correct; and, that the work associated with the operations proposed herein will be performed by SUPRON ENERGY CORPORATION and its contractors subcontractors in conformity with this plan and the terms and conditions under which it is approved.

SUPRON ENERGY CORPORATION

A handwritten signature in cursive script, reading "Rudy D. Motto".

Rudy D. Motto
Area Superintendent
Phone: 325-3587