

UNITED STATES
DEPARTMENT OF THE INTERIOR
GEOLOGICAL SURVEY

APPLICATION FOR PERMIT TO DRILL, DEEPEN, OR PLUG BACK

1a. TYPE OF WORK

DRILL ☒DEEPEN ☐PLUG BACK ☐

b. TYPE OF WELL

OIL
WELL ☐GAS
WELL ☒

OTHER

SINGLE
ZONE ☐MULTIPLE
ZONE ☒

2. NAME OF OPERATOR

Consolidated Oil & Gas, Inc.

3. ADDRESS OF OPERATOR

1860 Lincoln Street, Denver, Colorado 80295

4. LOCATION OF WELL (Report location clearly and in accordance with any State requirements)

At surface 990' FNL & 1850' FWL

At proposed prod. zone Same

14. DISTANCE IN MILES AND DIRECTION FROM NEAREST TOWN OR POST OFFICE*

1.8 miles ENE of LaPlata PO

15. DISTANCE FROM PROPOSED*

LOCATION TO NEAREST

PROPERTY OR LEASE LINE, FT.

(Also to nearest drig. unit line, if any)

790'

18. DISTANCE FROM PROPOSED*

TO NEAREST WELL, DRILLING COMPLETED,
OR APPLIED FOR, ON THIS LEASE, FT.

3250'

16. NO. OF ACRES IN LEASE

320

17. NO. OF ACRES ASSIGNED
TO THIS WELL

W 320

19. PROPOSED DEPTH

6925'

20. ROTARY OR CABLE TOOLS

Rotary

21. ELEVATIONS (Show whether DF, RT, GR, etc.)

5767' GR

22. APPROX. DATE WORK WILL START*

April 25, 1980

23.

PROPOSED CASING AND CEMENTING PROGRAM

SIZE OF HOLE	SIZE OF CASING	WEIGHT PER FOOT	SETTING DEPTH	QUANTITY OF CEMENT
12-1/4"	8-5/8"	24.0#	250'	200 sx. CIRCULATE
7-7/8"	5-1/2"	15.5#	6925'	500 sx.

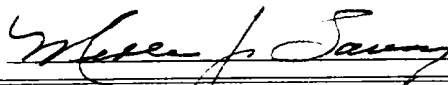
1. Drill 12-1/4" hole to \pm 250'. Run 8-5/8" casing. Circulate cement to surface.
2. WOC 12 hours.
3. Install BOPs. Pressure test surface casing and blowout preventers to 1000 psig.
4. Drill 7-7/8" hole to approximately 6925' with fresh water gel mud. Log. Run 5-1/2" casing and cement same with approximately 500 sx. WOC 12 hours.
5. Selectively perforate and stimulate the Mesaverde and Dakota formations and dually complete as required by the appropriate rules and regulations.

The W/2 of Section 13 is dedicated to this well and this acreage is committed to a gas sales contract.

IN ABOVE SPACE DESCRIBE PROPOSED PROGRAM: If proposal is to deepen or plug back, give data on present productive zone and proposed new productive zone. If proposal is to drill or deepen directionally, give pertinent data on subsurface locations and measured and true vertical depths. Give blowout preventer program, if any.

24.

SIGNED



TITLE Sr. Production Engineer

DATE April 3, 1980

DIST. 3

(This space for Federal or State office use)

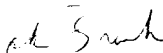
PERMIT NO.

APPROVAL DATE

APPROVED BY

TITLE

CONDITIONS OF APPROVAL, IF ANY:



NMOCC

APPROVED
AS AMENDEDDATE MAY 7 1980
JAMES F. SIMS
DISTRICT ENGINEER



NEW MEXICO OIL CONSERVATION COMMISSION
WELL LOCATION AND ACREAGE DEDICATION PLAT

Form C-102
Supersedes C-128
Effective 1-1-65

All distances must be from the outer boundaries of the Section.

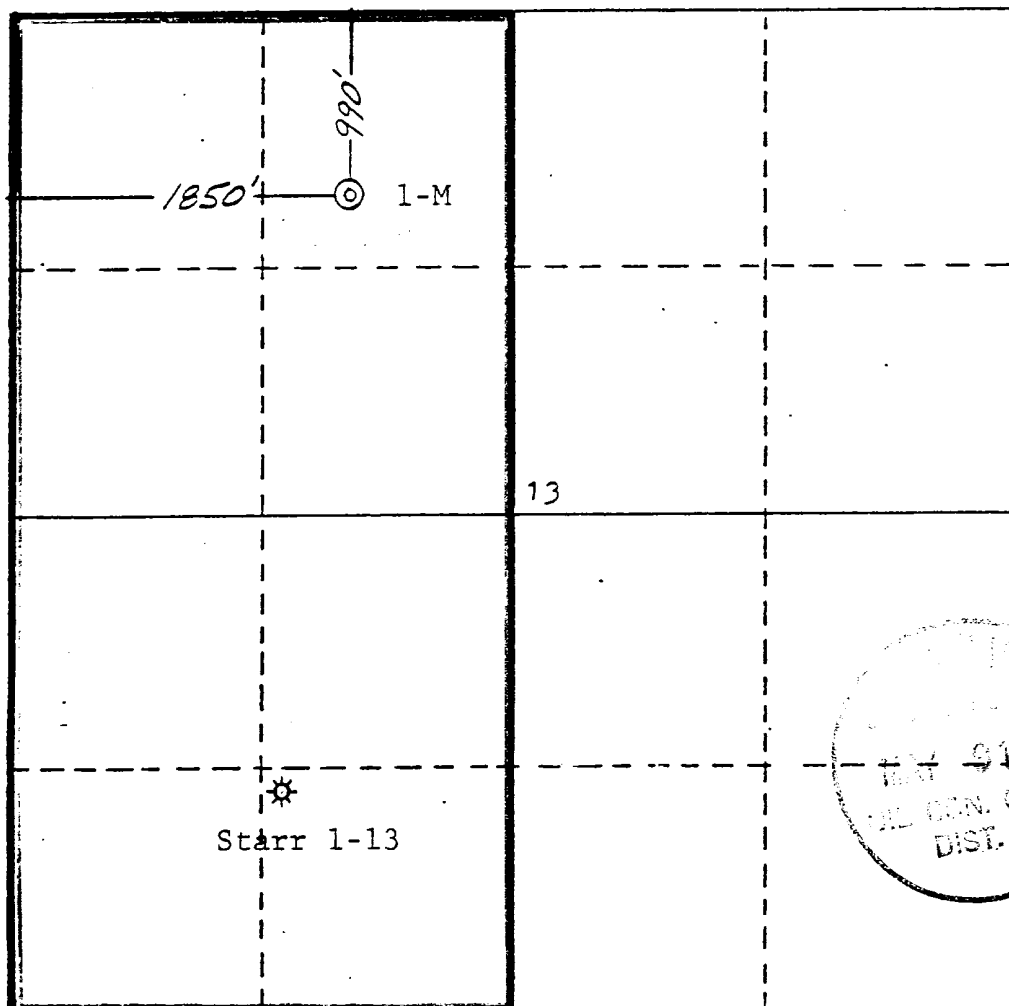
Operator CONSOLIDATED OIL AND GAS, INC.			Lease STARR		Well No. 1-M
Unit Letter C	Section 13	Township 31 NORTH	Range 13 WEST	County SAN JUAN	
Actual Footage Location of Well: 990 feet from the NORTH line and 1850 feet from the WEST line					
Ground Level Elev. 5767	Producing Formation Mesaverde/Dakota	Pool Blanco Mesaverde/ Basin Dakota		Dedicated Acreage: 320 Acres	

1. Outline the acreage dedicated to the subject well by colored pencil or hachure marks on the plat below.
2. If more than one lease is dedicated to the well, outline each and identify the ownership thereof (both as to working interest and royalty).
3. If more than one lease of different ownership is dedicated to the well, have the interests of all owners been consolidated by communitization, unitization, force-pooling, etc?

☐ Yes ☐ No If answer is "yes," type of consolidation _____

If answer is "no," list the owners and tract descriptions which have actually been consolidated. (Use reverse side of this form if necessary.) _____

No allowable will be assigned to the well until all interests have been consolidated (by communitization, unitization, forced-pooling, or otherwise) or until a non-standard unit, eliminating such interests, has been approved by the Commission.



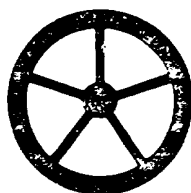
CERTIFICATION

I hereby certify that the information contained herein is true and complete to the best of my knowledge and belief.

Name
Merle J. Savage
Position
Sr. Production Engineer
Company
Consolidated Oil & Gas, Inc.
Date
April 3, 1980

I hereby certify that the well location shown on this plat was plotted from field notes of actual surveys made by me or under my supervision, and that the same is true and correct to the best of my knowledge and belief.

Date Surveyed
22 January 1979
Registered Professional Engineer and/or Land Surveyor
MICHAEL DALY
Certificate No.
5992



Consolidated Oil & Gas, Inc.

LINCOLN TOWER BUILDING
1960 LINCOLN STREET
DENVER, COLORADO 80295
(303) 861-5252

April 3, 1980

U. S. Geological Survey
P. O. Box 959
Farmington, New Mexico 87401

Re: Application for Permit to Drill
Starr No. 1-M
San Juan County, New Mexico

Gentlemen:

Following is the information requested in NTL-6 to accompany the permit to drill:

1. Location: 990' FNL & 1850' FWL, "C", Sec. 13, T31N, R13W
San Juan County, New Mexico
2. Elevation of Unprepared Ground: 5767'
3. Geologic Name of Surface Formation: Nacimiento
4. Type of Drilling Tools: Rotary
5. Proposed Drilling Depth: 6925'
6. Estimated Geologic Markers:
7. Anticipated Gas & Oil

Ojo Alamo	365'	
Pictured Cliffs	2065'	X
Cliff House	3715'	X
Pt. Lookout	4440'	X
Greenhorn	6450'	
Dakota	6610'	X

8. Casing Program and Setting Depth:

	<u>Size</u>	<u>Weight</u>	<u>Grade</u>	<u>Condition</u>	<u>Setting Depth</u>
Surface	8-5/8"	24.0#	K-55	New	250'
Production	5-1/2"	15.5#	K-55	New	6925'

9. Casing Setting Depth and Cementing:

Surface casing will be set at 250'. Cement will be circulated to surface with approximately 200 sx. Class "B" neat cement containing 2% CaCl_2 .

Cementing Prognosis:

Production casing will be run to total depth. Two stage collars will be run in the casing string at approximately 1350' and 4900'. The casing will be cemented in three stages as follows:

1st Stage: 60 sx. 65/35 Pozmix with 12% gel, tailed in with
160 sx. 50/50 Pozmix with 4% gel and 0.5% FLA.

2nd Stage: 120 sx. 65/35 Pozmix with 6% gel, tailed in with
160 sx. 50/50 Pozmix with 4% gel and 0.4% FLA.

3rd Stage: 240 sx. 65/35 Pozmix with 12% gel, tailed in with
50 sx. 50/50 Pozmix with 2% gel and 0.4% FLA.

Note: Exact volume of cement to be determined after running Caliper log.

10. Pressure Control Equipment: See attached diagram "A".

11. Circulating Media: 0-250' fresh water spud mud; 250'-TD fresh water, low solid mud with following properties:

Viscosity 32-28 sec., water loss 20-6 cc, weight 8.5-9.0 ppg with heavier weights if required by well conditions.

12. Testing, Logging and Coring Programs:

- a. Open hole logs will be run prior to running production casing.
- b. Coring is not planned.

13. Abnormal Pressure or Temperature and Hydrogen Sulfide Gas:

We do not anticipate abnormal pressure, temperature or hydrogen sulfide gas; however, a remote control blowout preventer as shown on attached diagram "A" will be installed.

14. Anticipated Starting Date: Drilling operations should start shortly after April 25, 1980

15. Other Facets of the Proposed Operations: None

Yours very truly,

CONSOLIDATED OIL & GAS, INC.



Merle J. Savage
Senior Production Engineer

MJS:lc
Attach.

DEVELOPMENT PLAN FOR SURFACE USE

STARR No. 1-M

Consolidated Oil & Gas, Inc. - Operator

SF 078707

NE NW, Sec. 13, T31N, R13W

San Juan County, New Mexico

1. Existing Roads

See enclosed topographic map (Attachment "A") which shows existing improved and unimproved roads.

2. Planned Access Roads

See enclosed topographic map (Attachment "A"). The required new road will be approximately 1300' long and 12' wide.

3. Location of Existing Wells

See enclosed lease map (Attachment "B").

4. Location of Existing and/or Proposed Facilities

See enclosed lease map (Attachment "B") showing location of wells and facilities operated by Consolidated Oil & Gas, Inc. If production is encountered, the tank battery and other required producing equipment will be located per attached completion plat (Attachment "C").

5. Location and Type of Water Supply

Water for drilling will be trucked approximately fifteen miles from an irrigation canal in Aztec, New Mexico or purchased locally and transported via irrigation pipe if water is available.

6. Source of Construction Materials

No additional construction material will be required.

7. Methods of Handling Waste Disposal

All waste material will be contained by earthen and steel pits. Earthen pits will be subsequently backfilled and buried. A portable chemical toilet will be furnished for drilling personnel.

8. Ancillary Facilities

No separate drill campsites are proposed.

9. Wellsite Layout

The drilling site location will be graded and will approximate 200' x 250' with natural drainage to the southwest. Care will be taken while grading to control erosion.

10. Plans for Restoration of Surface

- A. Following drilling and completion operations, all equipment and material not needed for operations will be removed. Pits containing fluid will be fenced until filled with any additional pits filled and the location cleaned of all trash and junk.
- B. After abandonment, any special rehabilitation and/or revegetation requirements (reseed with seed mixture No. 2) will be complied with and accomplished as expeditiously as possible. All pits should be filled and leveled within 90 days after abandonment.

11. Other Information

The location is on the side of a slope in a rolling hills area, with sandy clay topsoil and vegetation consisting of scattered scrub cedar and pine as well as rabbit brush and native grasses. No residences or structures are nearby. The surface rights are leased by Gerald Nickles, LaPlata, New Mexico. If, during operations, any historic or prehistoric ruin, monument or site, or any object of antiquity is discovered, work will be suspended and the discovery will be reported to the appropriate regulatory agency.

12. Operator's Representative

Consolidated Oil & Gas, Inc.
Merle J. Savage, Senior Production Engineer
1860 Lincoln Street, Suite 1300
Denver, Colorado 80295
Phone (303) 861-5252

13. Certification

I hereby certify that I, or persons under my direct supervision, have inspected the proposed drillsite and access route; that I am familiar with the conditions which presently exist; that the statements made in this plan are, to the best of my knowledge, true and correct; and that the work associated with the operations proposed herein will be performed by Consolidated Oil & Gas, Inc. and its contractors and sub-contractors in conformity with this plan and the terms and conditions under which it is approved.

3 April 80

Date



Merle J. Savage
Senior Production Engineer

DIAGRAM "A"

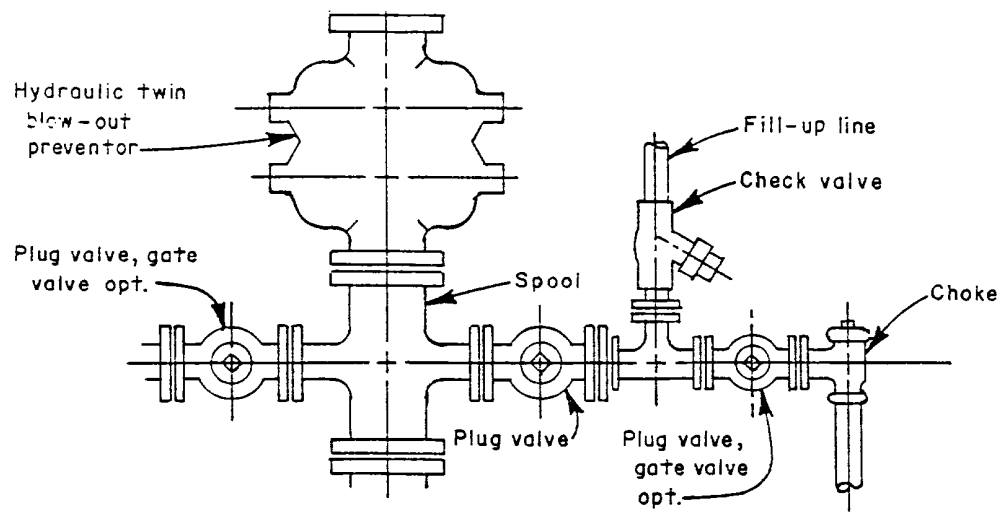
U.S.G.S. APPLICATION FOR PERMIT
TO DRILL

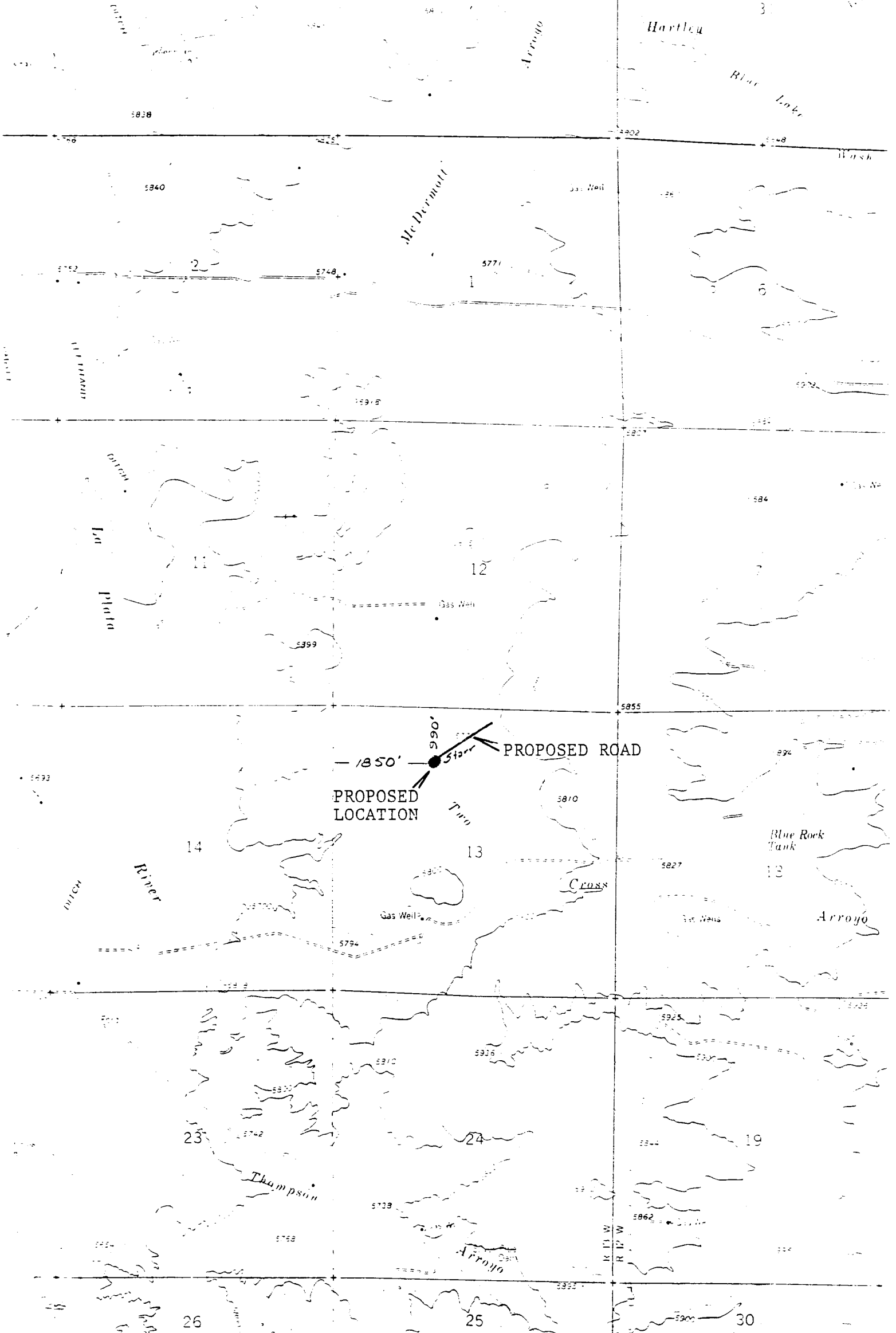
CONSOLIDATED OIL & GAS, INC - OPERATOR

STARR NO. 1-M

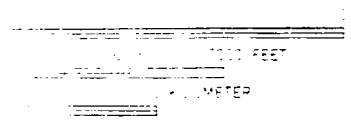
SF-078707

NE NW Section 13, T31N, R13W
SAN JUAN COUNTY, NEW MEXICO





ATTACHMENT "A"
CONSOLIDATED OIL AND GAS, INC.
STARR # 1-M
NW¹/₄ Section 13, T31N, R13 W
San Juan County, New Mexico



ROAD CLASSIFICATION
Medium-duty ——— Light-duty ———
Unimproved dirt ———

ATTACHMENT "C"

DEVELOPMENT PLAN FOR SURFACE USE

CONSOLIDATED OIL & GAS, INC. - OPERATOR

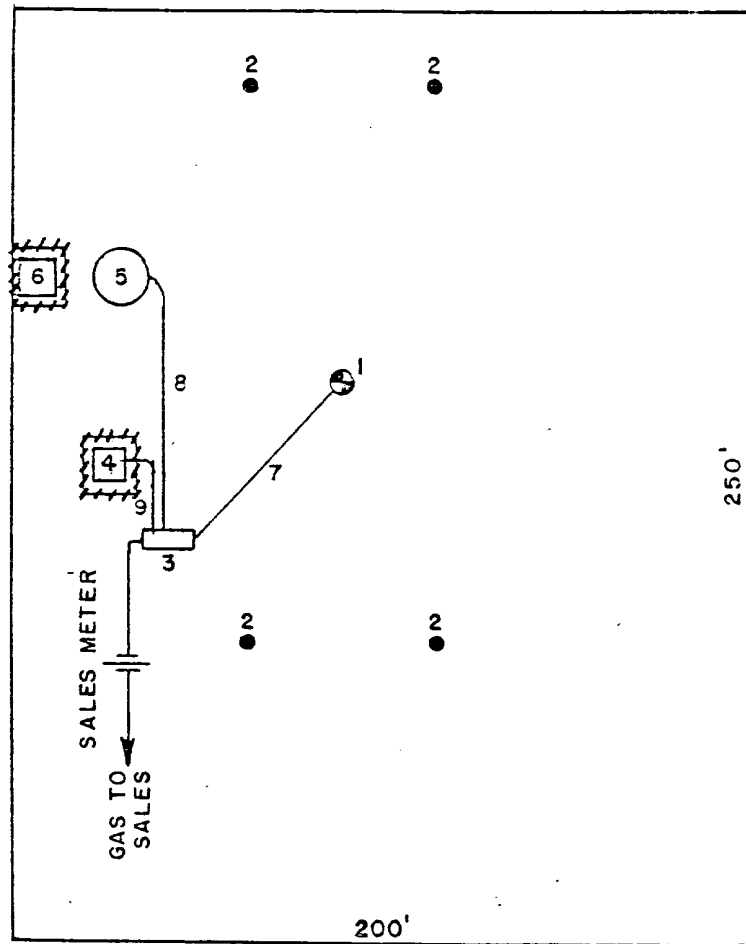
STARR NO. 1-M

SF-078707

NE NW Section 13, T31N, R13W

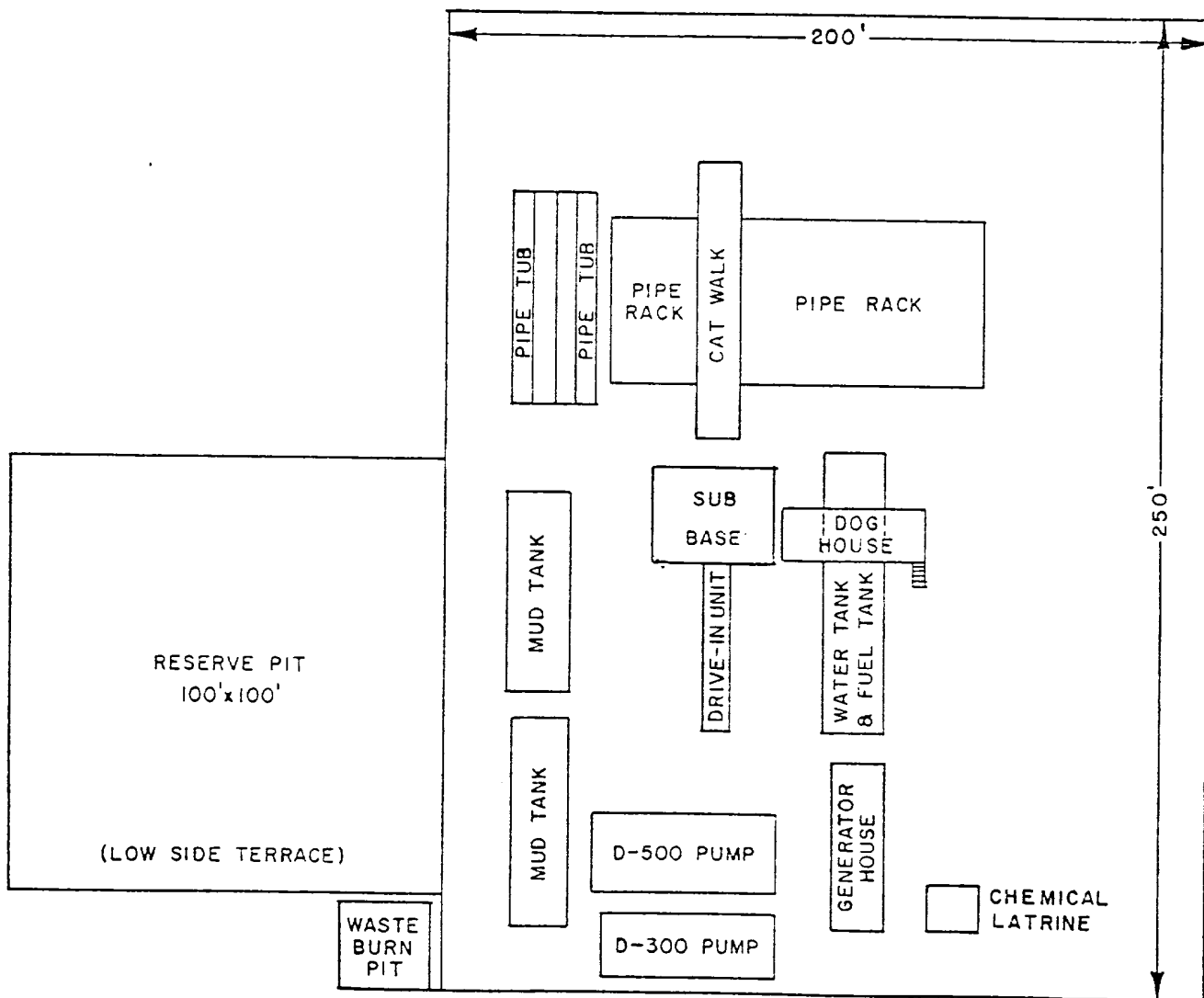
SAN JUAN COUNTY, NEW MEXICO

1. Well
2. Dead Men
3. Prod. Unit
4. Water Pit
5. 300 bbl. Oil Tank
6. Water Pit
7. 2" Buried flow line
8. 1½" Oil Line
9. 1½" Water Line



1" equals 50'

Fence - - - - -



ATTACHMENT "D"

DEVELOPMENT PLAN FOR SURFACE USE

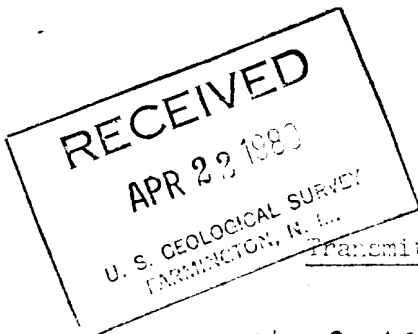
CONSOLIDATED OIL & GAS, INC. - OPERATOR

STARR NO. 1-M

SF-078707

NE NW Section 13, T31N, R13W

SAN JUAN COUNTY, NEW MEXICO



Bureau of Land Management

Transmittal of Application for Permit to Drill

Date April 9, 1980
Operator Consolidated Oil & Gas, Inc.
Well No. & Name 1-M Start

Lease Number SF-078707
Sec 13 T. 31N. R. 13W.
Footage 990' FNL & 1850' FWL

If the proposed action meets with your approval, please check the applicable surface rehabilitation stipulations below and list any additional ones you would like to include. We will approve the application when we receive these requirements.

Thank you for your cooperation.

U. S. Geological Survey [Signature]

☐ D. All above-ground permanent surface structures and equipment will be painted a non-glare color that simulates the natural color of the site, as follows:

- ☐ Brown, Federal Standard 595a-30313
- ☐ Green, Federal Standard 595a-34127
- ☐ Gray, Federal Standard 595a-36357

☐ H. Species to be planted: As specified under USGS General Requirements for Oil and Gas Operations; Section 15, special stipulations, letter H.

- ☐ Seed Mix No. 1
- ☐ Seed Mix No. 2
- ☐ Seed Mix No. 3

☐ Land is Federal

☐ Land is Private

Date 4/18/80

[Signature]
BLM Representative

I. The access road will follow the pipeline survey as discussed on April 30, 1979 and not as shown in the Application for Permit to Drill.

