

UNITED STATES  
DEPARTMENT OF THE INTERIOR  
GEOLOGICAL SURVEY

APPLICATION FOR PERMIT TO DRILL, DEEPEN, OR PLUG BACK

1a. TYPE OF WORK  
DRILL ☒ DEEPEN ☐ PLUG BACK ☐

b. TYPE OF WELL  
OIL WELL ☐ GAS WELL ☒ OTHER ☐  
SINGLE ZONE ☐ MULTIPLE ZONE ☒

2. NAME OF OPERATOR  
Consolidated Oil & Gas, Inc.

3. ADDRESS OF OPERATOR  
1860 Lincoln Street, Denver, Colorado 80295

4. LOCATION OF WELL (Report location clearly and in accordance with any State requirements.)\*  
At surface 1450' FSL & 1105' FEL  
At proposed prod. zone Same

14. DISTANCE IN MILES AND DIRECTION FROM NEAREST TOWN OR POST OFFICE\*  
1.6 miles SE of LaPlata PO

15. DISTANCE FROM PROPOSED\*  
LOCATION TO NEAREST  
PROPERTY OR LEASE LINE, FT.  
(Also to nearest drlg. unit line, if any.) 790'

18. DISTANCE FROM PROPOSED LOCATION\*  
TO NEAREST WELL, DRILLING, COMPLETED,  
OR APPLIED FOR, ON THIS LEASE, FT. 2250'

21. ELEVATIONS (Show whether DF, RT, GR, etc.)  
5968' GR

23. PROPOSED CASING AND CEMENTING PROGRAM

SIZE OF HOLE	SIZE OF CASING	WEIGHT PER FOOT	SETTING DEPTH	QUANTITY OF CEMENT
12-1/4"	8-5/8"	24.0#	250'	200 sx. <b>CIRCULATE</b>
7-7/8"	5-1/2"	15.5#	7125'	500 sx.

1. Drill 12-1/4" hole to  $\pm$  250'. Run 8-5/8" casing. Circulate cement to surface.
2. WOC 12 hours.
3. Install BOPs. Pressure test surface casing and blowout preventers to 1000 psig.
4. Drill 7-7/8" hole to approximately 7125' with fresh water gel mud. Log. Run 5-1/2" casing and cement same with approximately 500 sx. WOC 12 hours.
5. Selectively perforate and stimulate the Mesaverde and Dakota formations and dually complete as required by the appropriate rules and regulations.

The E/2 of Section 25 is dedicated to this well and this acreage is committed to a gas sales contract.

IN ABOVE SPACE DESCRIBE PROPOSED PROGRAM: If proposal is to deepen or plug back, give data on present productive zone and proposed new productive zone. If proposal is to drill or deepen directionally, give pertinent data on subsurface locations and measured and true vertical depths. Give blowout preventer program, if any.

24. SIGNED James F. Sims TITLE Sr. Production Engineer, DATE May 13, 1980

(This space for Federal or State office use)

PERMIT NO. \_\_\_\_\_ APPROVAL DATE \_\_\_\_\_

APPROVED BY \_\_\_\_\_ TITLE \_\_\_\_\_  
CONDITIONS OF APPROVAL, IF ANY:

NMOCC

DRILLING OPERATIONS AUTHORIZED ARE  
SUBJECT TO COMPLIANCE WITH ATTACHED  
"GENERAL REQUIREMENTS"

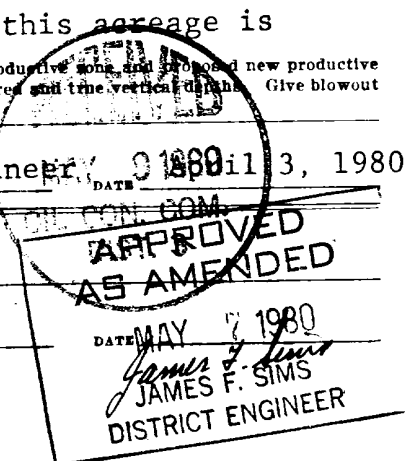
30-045-24321  
5. LEASE DESIGNATION AND SERIAL NO.  
SF 078464  
6. IF INDIAN, ALLOTTEE OR TRIBE NAME  
7. UNIT AGREEMENT NAME  
8. FARM OR LEASE NAME  
Cain  
9. WELL NO.  
1-M  
10. FIELD AND POOL, OR WILDCAT  
Blanco Mesaverde/  
Basin Dakota  
11. SEC., T., R., M., OR BLK.  
AND SURVEY OR AREA  
Sec. 25, T31N, R13W

12. COUNTY OR PARISH  
San Juan  
13. STATE  
New Mexico

17. NO. OF ACRES ASSIGNED  
TO THIS WELL  
160 E 320

20. ROTARY OR CABLE TOOLS  
Rotary

22. APPROX. DATE WORK WILL START\*  
April 25, 1980



RECEIVED

1911

RECEIVED

1911

NEW MEXICO OIL CONSERVATION COMMISSION  
WELL LOCATION AND ACREAGE DEDICATION PLAT

Form C-102  
Supersedes C-128  
Effective 1-1-65

All distances must be from the outer boundaries of the Section.

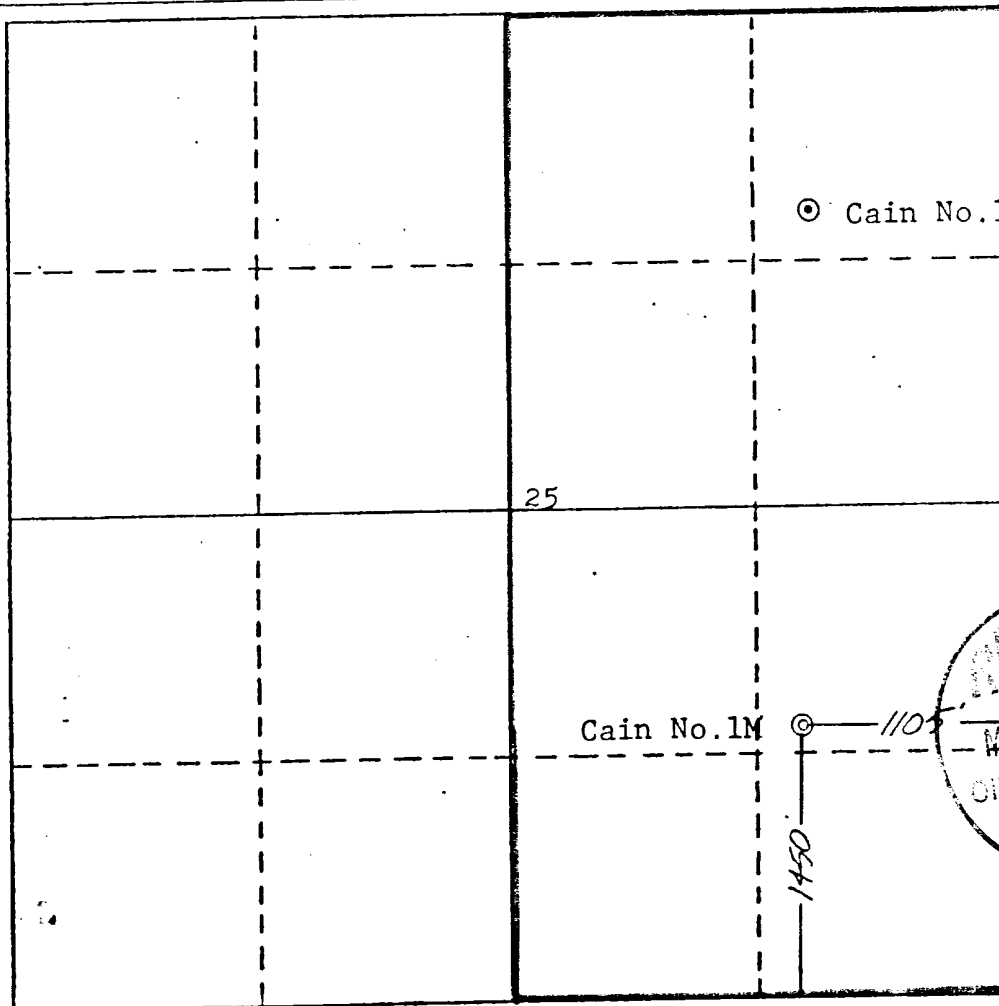
Operator <b>CONSOLIDATED OIL AND GAS, INC.</b>		Lease <b>CAIN</b>		Well No. <b>1 M</b>
Unit Letter <b>I</b>	Section <b>25</b>	Township <b>31 NORTH</b>	Range <b>13 WEST</b>	County <b>SAN JUAN</b>
Actual Footage Location of Well: <b>1450</b> feet from the <b>SOUTH</b> line and <b>1105</b> feet from the <b>EAST</b> line				
Ground Level Elev. <b>5968</b>	Producing Formation <b>Mesaverde/Dakota</b>	Pool <b>Blanco Mesaverde/ Basin Dakota</b>		Dedicated Acreage: <b>320</b> Acres

1. Outline the acreage dedicated to the subject well by colored pencil or hachure marks on the plat below.
2. If more than one lease is dedicated to the well, outline each and identify the ownership thereof (both as to working interest and royalty).
3. If more than one lease of different ownership is dedicated to the well, have the interests of all owners been consolidated by communitization, unitization, force-pooling, etc?

☐ Yes ☐ No If answer is "yes," type of consolidation \_\_\_\_\_

If answer is "no," list the owners and tract descriptions which have actually been consolidated. (Use reverse side of this form if necessary.) \_\_\_\_\_

No allowable will be assigned to the well until all interests have been consolidated (by communitization, unitization, forced-pooling, or otherwise) or until a non-standard unit, eliminating such interests, has been approved by the Commission.



CERTIFICATION

I hereby certify that the information contained herein is true and complete to the best of my knowledge and belief.

*Merle J. Savage*  
Name

Merle J. Savage

Position  
Sr. Production Engineer

Company  
Consolidated Oil & Gas, Inc.

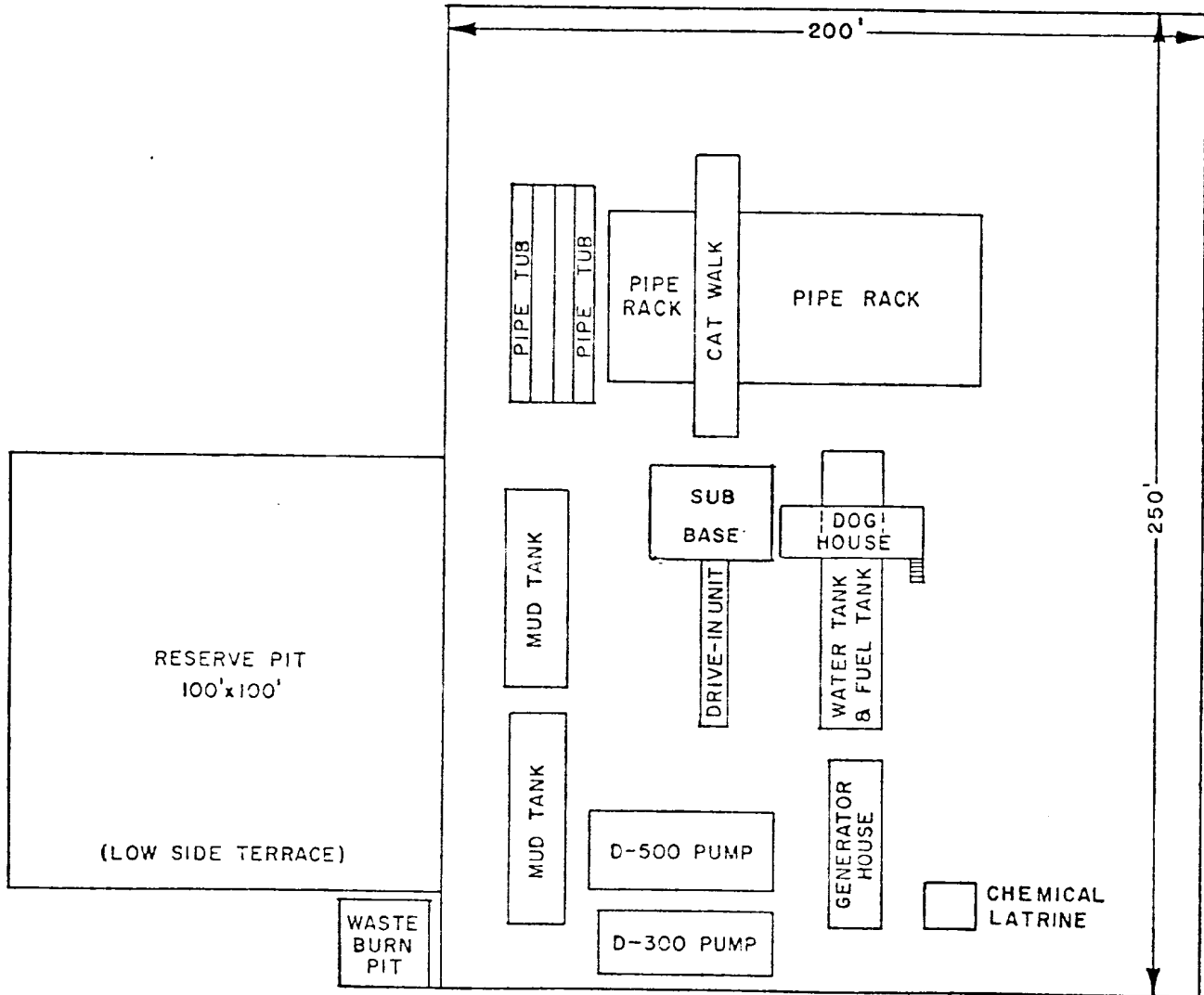
Date  
April 3, 1980

I hereby certify that the well location shown on this plat was plotted from field actual surveys made by me or under my supervision, and that the same is true and correct to the best of my knowledge and belief.

*Michael D. Kelly*  
Date  
25 January 1979

Registered Professional Engineer and Land Surveyor  
Michael D. Kelly  
5992





ATTACHMENT "D"

DEVELOPMENT PLAN FOR SURFACE USE

CONSOLIDATED OIL & GAS, INC. - OPERATOR

CAIN NO. 1-M

SF-078464

NE SE Section 25, T31N, R13W

SAN JUAN COUNTY, NEW MEXICO



ATTACHMENT "C"

DEVELOPMENT PLAN FOR SURFACE USE

CONSOLIDATED OIL & GAS, INC. - OPERATOR

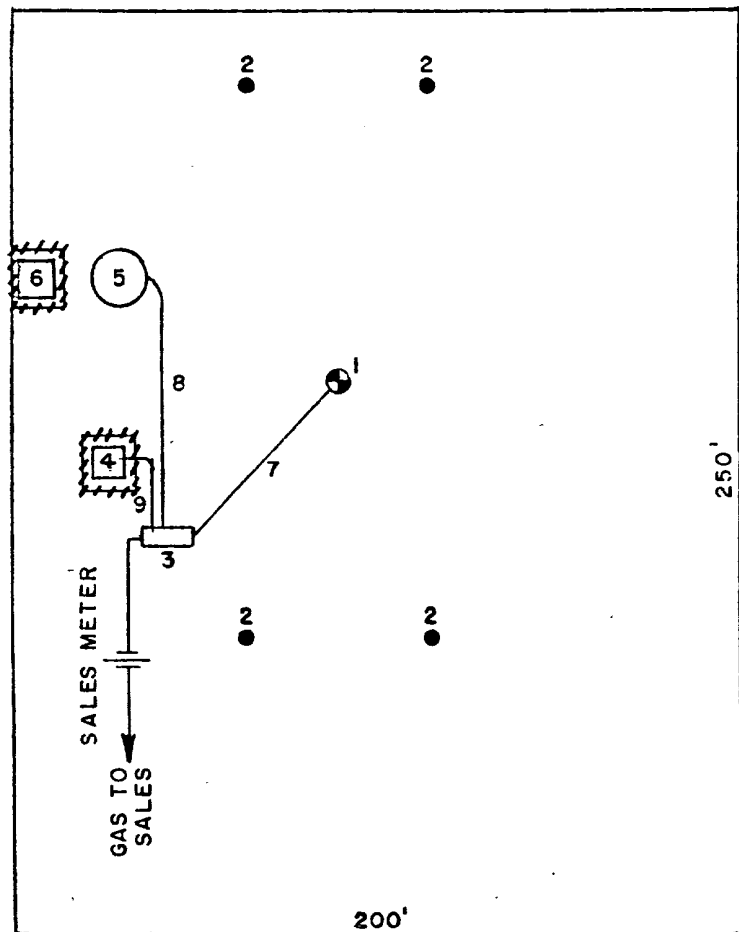
CAIN NO. 1-M

SF-078464

NE SE Section 25, T31N, R13W

SAN JUAN COUNTY, NEW MEXICO

1. Well
2. Dead Men
3. Prod. Unit
4. Water Pit
5. 300 bbl. Oil Tank
6. Water Pit
7. 2" Buried flow line
8. 1½" Oil Line
9. 1½" Water Line



1" equals 50'

Fence ~~////~~



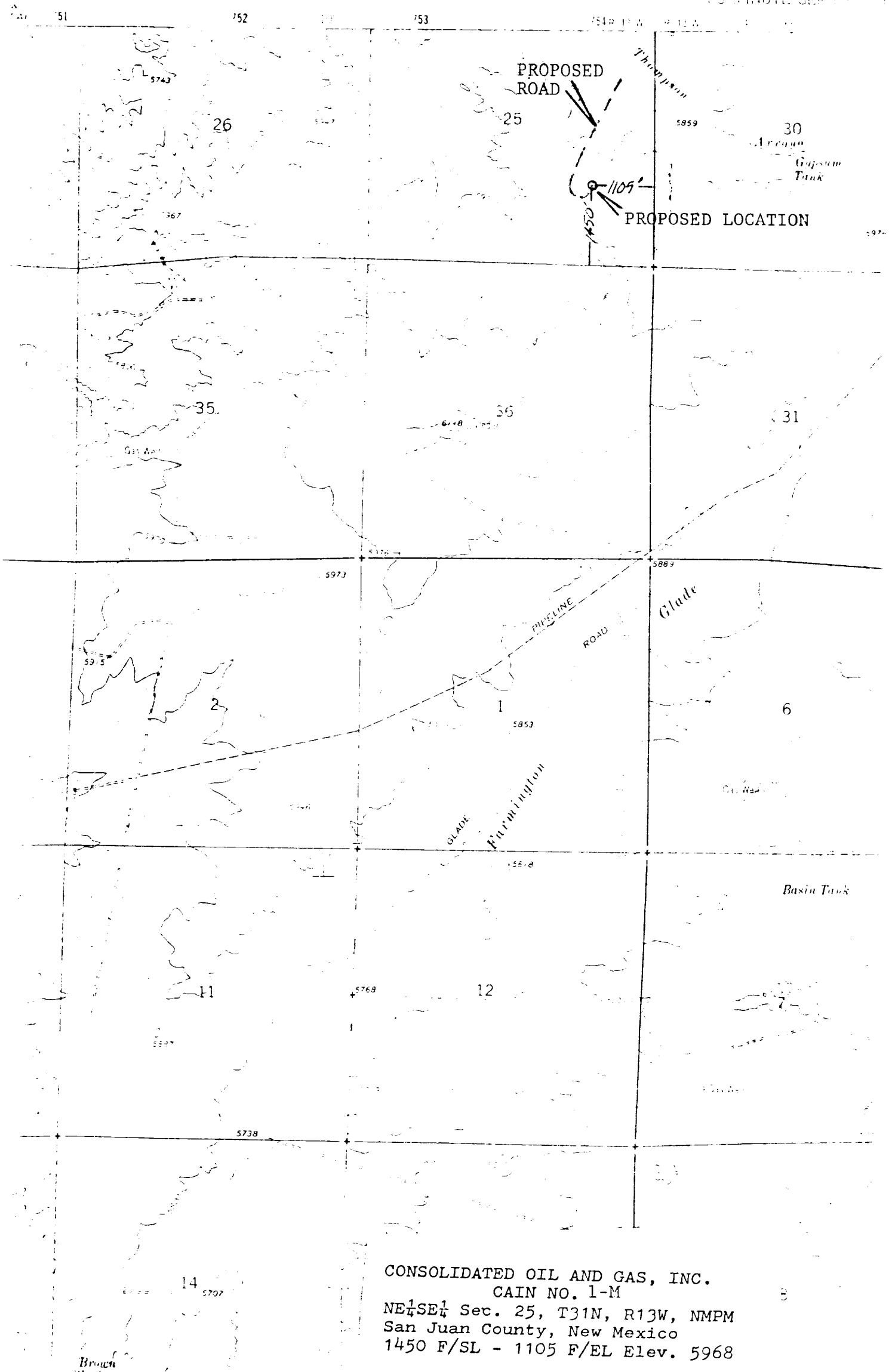


ATTACHMENT "A"

FARMINGTON NORTH C.

NEW MEXICO-SAN J

15 MINUTE SECTION



CONSOLIDATED OIL AND GAS, INC.

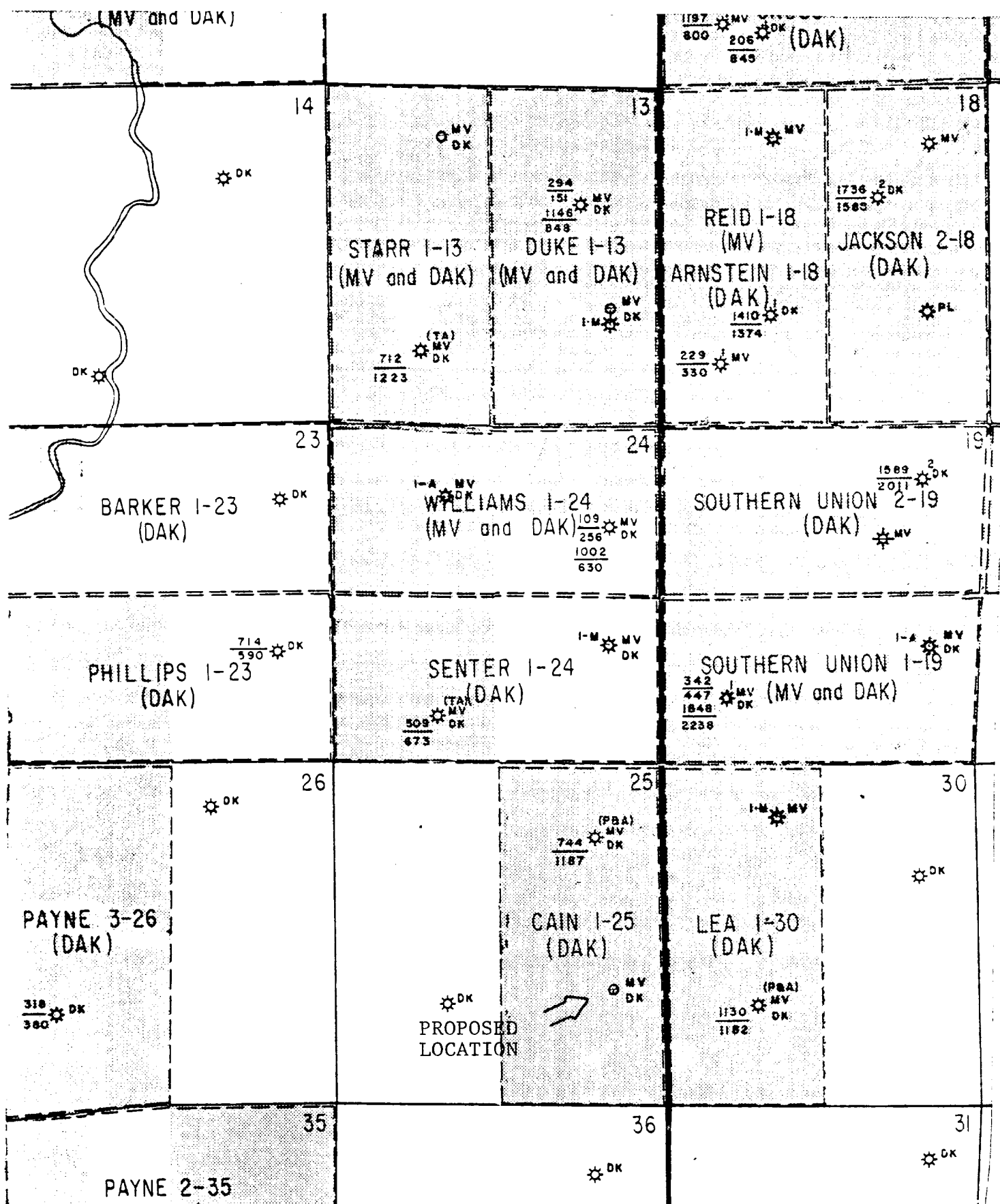
CAIN NO. 1-M

NE $\frac{1}{4}$ SE $\frac{1}{4}$  Sec. 25, T31N, R13W, NMPM

San Juan County, New Mexico

1450 F/SL - 1105 F/EL Elev. 5968





# ATTACHMENT "B"

Development Plan for Surface Use

Consolidated Oil & Gas, Inc.

CAIN No. 1-M

SF 078464

NE SF Sec. 25, T31N, R13W

San Juan County, New Mexico



DIAGRAM "A"

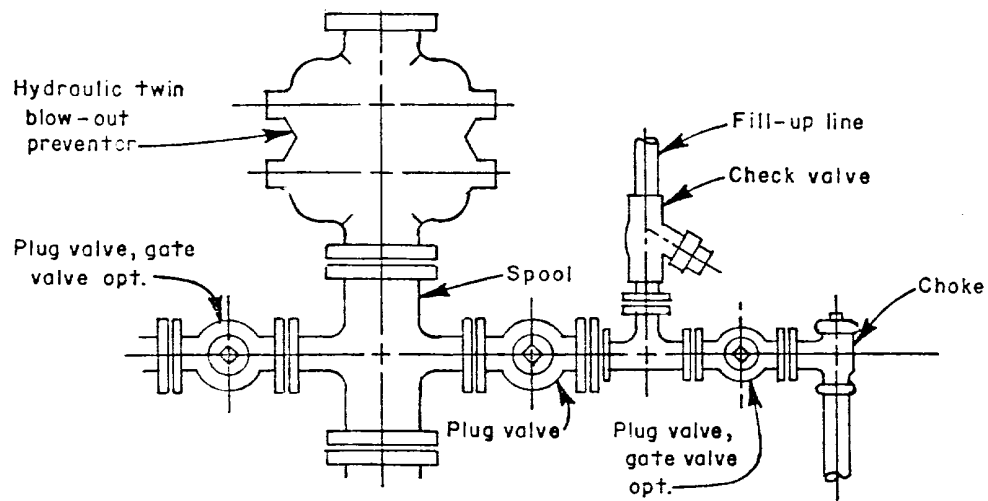
U.S.G.S. APPLICATION FOR PERMIT  
TO DRILL

CONSOLIDATED OIL & GAS, INC - OPERATOR

CAIN NO. 1-M

SF-078464

NE SE Section 25, T31N, R13W  
SAN JUAN COUNTY, NEW MEXICO



\_\_\_\_\_

13. Certification

I hereby certify that I, or persons under my direct supervision, have inspected the proposed drillsite and access route; that I am familiar with the conditions which presently exist; that the statements made in this plan are, to the best of my knowledge, true and correct; and that the work associated with the operations proposed herein will be performed by Consolidated Oil & Gas, Inc. and its contractors and sub-contractors in conformity with this plan and the terms and conditions under which it is approved.

3 April 80

Date

Merle J. Sayage

Merle J. Sayage  
Senior Production Engineer





8. Ancillary Facilities

No separate drill campsites are proposed.

9. Wellsite Layout

The drilling site location will be graded and will approximate 200' x 250' with natural drainage to the north. Care will be taken while grading to control erosion.

10. Plans for Restoration of Surface

- A. Following drilling and completion operations, all equipment and material not needed for operations will be removed. Pits containing fluid will be fenced until filled with any additional pits filled and the location cleaned of all trash and junk.
- B. After abandonment, any special rehabilitation and/or re-vegetation requirements (reseed with seed mixture No. 2) will be complied with and accomplished as expeditiously as possible. All pits should be filled and leveled within 90 days after abandonment.

11. Other Information

The location is on the side of a slope in a rolling hills area, with sandy clay topsoil and vegetation consisting of scattered scrub cedar and pine as well as rabbit brush and native grasses. No residences or structures are nearby. The surface rights are leased by Kenneth Huggins, La Plata, New Mexico. If, during operations, any historic or prehistoric ruin, monument or site, or any object of antiquity is discovered, work will be suspended and the discovery will be reported to the appropriate regulatory agency.

12. Operator's Representative

Consolidated Oil & Gas, Inc.  
Merle J. Savage, Senior Production Engineer  
1860 Lincoln Street, Suite 1300  
Denver, Colorado 80295  
Phone (303) 861-5252



## DEVELOPMENT PLAN FOR SURFACE USE

CAIN No. 1-M

Consolidated Oil & Gas, Inc. - Operator

SF 078464

NE SE, Sec. 25, T31N, R13W

San Juan County, New Mexico

1. Existing Roads

See enclosed topographic map (Attachment "A") which shows existing improved and unimproved roads.

2. Planned Access Roads

See enclosed topographic map (Attachment "A"). The new road will be approximately 2600' long & 12' wide approaching well from the south.

3. Location of Existing Wells

See enclosed lease map (Attachment "B").

4. Location of Existing and/or Proposed Facilities

See enclosed lease map (Attachment "B") showing location of wells and facilities operated by Consolidated Oil & Gas, Inc. If production is encountered, the tank battery and other required producing equipment will be located per attached completion plat (Attachment "C").

5. Location and Type of Water Supply

Water for drilling will be trucked approximately fifteen miles from an irrigation canal in Aztec, New Mexico or purchased locally and transported via irrigation pipe if water is available.

6. Source of Construction Materials

No additional construction material will be required.

7. Methods of Handling Waste Disposal

All waste material will be contained by earthen and steel pits. Earthen pits will be subsequently backfilled and buried. A portable chemical toilet will be furnished for drilling personnel.



9. Casing Setting Depth and Cementing:

Surface casing will be set at 250'. Cement will be circulated to surface with approximately 200 sx. Class "B" neat cement containing 2%  $\text{CaCl}_2$ .

Cementing Prognosis:

Production casing will be run to total depth. Two stage collars will be run in the casing string at approximately 1350' and 4900'. The casing will be cemented in three stages as follows:

1st Stage: 60 sx. 65/35 Pozmix with 12% gel, tailed in with 160 sx. 50/50 Pozmix with 4% gel and 0.5% FLA.

2nd Stage: 120 sx. 65/35 Pozmix with 6% gel, tailed in with 160 sx. 50/50 Pozmix with 4% gel and 0.4% FLA.

3rd Stage: 240 sx. 65/35 Pozmix with 12% gel, tailed in with 50 sx. 50/50 Pozmix with 2% gel and 0.4% FLA.

Note: Exact volume of cement to be determined after running Caliper log.

10. Pressure Control Equipment: See attached diagram "A".

11. Circulating Media: 0-250' fresh water spud mud; 250'-TD fresh water, low solid mud with following properties:

Viscosity 32-28 sec., water loss 20-6 cc, weight 8.5-9.0 ppg with heavier weights if required by well conditions.

12. Testing, Logging and Coring Programs:

a. Open hole logs will be run prior to running production casing.

b. Coring is not planned.

13. Abnormal Pressure or Temperature and Hydrogen Sulfide Gas:

We do not anticipate abnormal pressure, temperature or hydrogen sulfide gas; however, a remote control blowout preventer as shown on attached diagram "A" will be installed.

14. Anticipated Starting Date: Drilling operations should start shortly after April 25, 1980.

15. Other Facets of the Proposed Operations: None

Yours very truly,

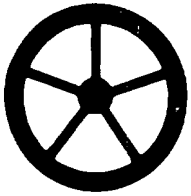
CONSOLIDATED OIL & GAS, INC.



Merle J. Savage  
Senior Production Engineer

MJS:lt  
Attach.





# Consolidated Oil & Gas, Inc.

LINCOLN TOWER BUILDING  
1860 LINCOLN STREET  
DENVER, COLORADO 80295  
(303) 861-5252

April 3, 1980

U. S. Geological Survey  
P. O. Box 959  
Farmington, New Mexico 87401

Re: Application for Permit to Drill  
Cain No. 1-M  
San Juan County, New Mexico

Gentlemen:

Following is the information requested in NTL-6 to accompany the permit to drill:

1. Location: 1450' FSL & 1105' FEL, "I", Sec. 25, T31N, R13W  
San Juan County, New Mexico
2. Elevation of Unprepared Ground: 5968'
3. Geologic Name of Surface Formation: Nacimiento
4. Type of Drilling Tools: Rotary
5. Proposed Drilling Depth: 7125'
6. Estimated Geologic Markers:
7. Anticipated Gas & Oil

Ojo Alamo	365'	
Pictured Cliffs	2275'	X
Cliff House	3940'	X
Pt. Lookout	4610'	X
Greenhorn	6675'	
Dakota	6825'	X

8. Casing Program and Setting Depth:

	<u>Size</u>	<u>Weight</u>	<u>Grade</u>	<u>Condition</u>	<u>Setting Depth</u>
Surface	8-5/8"	24.0#	K-55	New	250'
Production	5-1/2"	15.5#	K-55	New	7125'

