

Submit 3 Copies
to Appropriate
District Office

State of New Mexico
Energy, Minerals and Natural Resources Department

Form C-103
Revised 1-1-89

DISTRICT I
P.O. Box 1980, Hobbs, NM 88240

DISTRICT II
P.O. Drawer DD, Artesia, NM 88210

DISTRICT III
1000 Rio Brazos Rd., Aztec, NM 87410

OIL CONSERVATION DIVISION
P.O. Box 2088
Santa Fe, New Mexico 87504-2088

WELL API NO. 30-045-24322
5. Indicate Type of Lease STATE <input checked="" type="checkbox"/> FEE <input type="checkbox"/>
6. State Oil & Gas Lease No. Egg
7. Lease Name or Unit Agreement Name TEMPLETON
8. Well No. 1-E
9. Pool name or Wildcat Basin DK/Flora Vista GL
10. Elevation (Show whether DF, RKB, RT, GR, etc.)

SUNDRY NOTICES AND REPORTS ON WELLS
(DO NOT USE THIS FORM FOR PROPOSALS TO DRILL OR TO DEEPEN OR PLUG BACK TO A
DIFFERENT RESERVOIR. USE "APPLICATION FOR PERMIT"
(FORM C-101) FOR SUCH PROPOSALS.)

1. Type of Well: OIL WELL <input type="checkbox"/> GAS WELL <input checked="" type="checkbox"/> OTHER	2. Name of Operator GREYSTONE ENERGY, INC.
3. Address of Operator 5802 HWY 64, FARMINGTON, NM 87401	4. Well Location Unit Letter <u>H</u> : <u>890</u> Feet From The <u>NORTH</u> Line and <u>1820</u> Feet From The <u>EAST</u> Line Section <u>27</u> Township <u>31N</u> Range <u>13W</u> NMPM <u>SAN JUAN</u> County
10. Elevation (Show whether DF, RKB, RT, GR, etc.)	

11. Check Appropriate Box to Indicate Nature of Notice, Report, or Other Data	
NOTICE OF INTENTION TO:	SUBSEQUENT REPORT OF:
PERFORM REMEDIAL WORK <input type="checkbox"/>	REMEDIAL WORK <input type="checkbox"/>
TEMPORARILY ABANDON <input type="checkbox"/>	ALTERING CASING <input type="checkbox"/>
PULL OR ALTER CASING <input type="checkbox"/>	COMMENCE DRILLING OPNS. <input type="checkbox"/>
OTHER: <input type="checkbox"/>	PLUG AND ABANDONMENT <input type="checkbox"/>
	CASING TEST AND CEMENT JOB <input type="checkbox"/>
	OTHER: <input type="checkbox"/>

12. Describe Proposed or Completed Operations (Clearly state all pertinent details, and give pertinent dates, including estimated date of starting any proposed work) SEE RULE 1103.

CORRECTION OF PLUG BACK DEPTH TO 1800'

RECEIVED
AUG 25 1999
OIL CON. DIV.
DIST. 3

I hereby certify that the information above is true and complete to the best of my knowledge and belief.

SIGNATURE Chester L. Deal TITLE DISTRICT SUP'T. DATE 8/23/1999
TYPE OR PRINT NAME CHESTER DEAL TELEPHONE NO. 632-8056

(This space for State Use)

ORIGINAL SIGNED BY CHARLIE T. PERPIN

DEPUTY OIL & GAS INSPECTOR, DIST. 3

AUG 25 1999

APPROVED BY _____ TITLE _____ DATE _____

CONDITIONS OF APPROVAL, IF ANY:

Dakota / Gallup PLUGGING PROCEDURE

4-19-99

Templeton #1E
Basin Dakota / Gallup
890' FNL & 1820' FEL, Section 27, T31N, R13W
Rio Arriba County, New Mexico

Note: All cement volumes use 100% excess outside pipe and 50' excess inside pipe. The stabilizing wellbore fluid will be 8.3 ppg, sufficient to balance all exposed formation pressures.

1. Install and test rig anchors. Prepare blow pit. Comply with all NMOCD, BLM and Greystone safety rules and regulations. MOL and RU daylight pulling unit. Conduct safety meeting for all personnel on location. Blow well down; kill with water as necessary. ND wellhead and NU BOP and stripping head; test BOP.
2. TOH and LD 1-1/2" Gallup tubing, total 5681'. PU on Dakota tubing and attempt to pull seal assemble from packer at 5800'. TOH with tubing and LD seal assembly and all bad tubing (Note had moderate corrosion in 1990 workover). If unable to pull seal assembly and tubing does not leak, then pump plug #1 down tubing and WOC. Determine freepoint by stretch and then jet cut tubing. Then LD tubing and PU workstring.
3. **Plug #1 (Dakota perforations and top, 6552' – 5730')**: If able to pull seal assembly then TIH with tubing and set 5-1/2' cement retainer at 5780'. Establish rate into perforations. Mix 105 sxs Class B cement and squeeze 100 sxs below CR and leave 5 sxs above to isolate Dakota perforations. TOH.
4. **Plug #2 (Gallup perforations and top, 5624' – 5524')**: RIH with 5-1/2" wireline CIBP and set at 5624'. TIH with open ended tubing and tag CIBP. Load casing with water and pressure test to 500#. If casing does not test, spot or tag subsequent plug as appropriate. Spot 17 sxs Class B cement inside casing above CIBP to isolate Gallup perforations and cover top. PUH to 4180'.
5. **Plug #3 (Mesaverde top, 4180' – 4080')**: Mix 17 sxs Class B cement and spot balanced plug inside casing to cover Mesaverde top. PUH to 1780'.
6. Set 5-1/2" wireline CIBP at 1800'. Pressure test casing to 1000 psi.
7. ND BOP and NU well head. RD and MOL.

Noted
Sunday
For
Plug Back

Templeton #1E

Current

Basin Dakota / Gallup

NE, Section 27, T-31-N, R-13-W, Rio Arriba County, NM

Today's Date: 4/19/99

Spud: 7/8/80

Comp: 12/26/80

Elevation: 5580' GL
5592' KB

Ojo Alamo - not present

Fruitland @ 995'

Pictured Cliffs @ 1730'

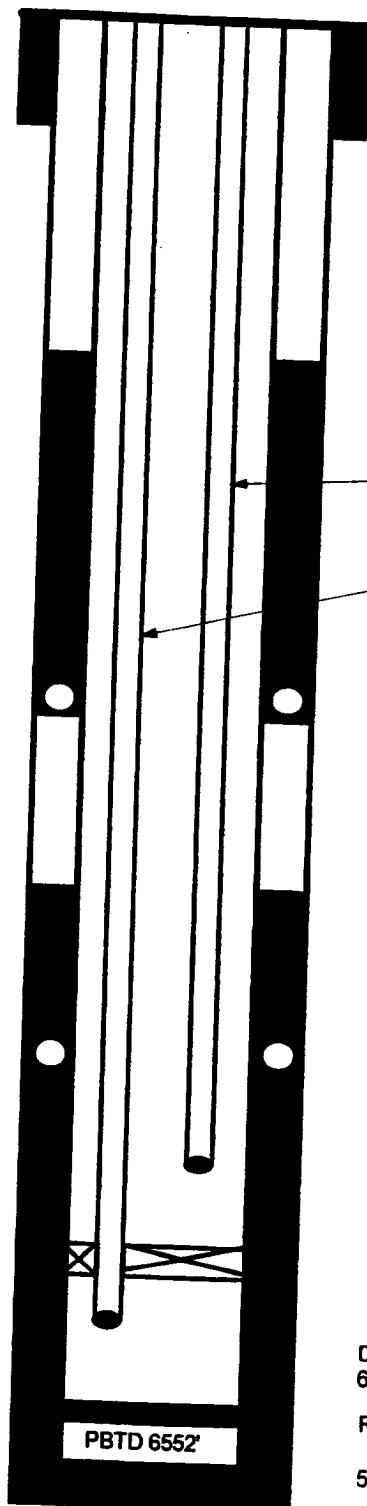
Mesaverde @ 4130'

Gallup @ 5674'

Dakota @ 6312'

12-1/4" Hole

7-7/8" Hole



8-5/8" 24# V-55 Csg set @ 263'
250 sxs cement (Circulated to Surface)

Well History

Mar '90: Packer Leak: Pull Gallup tubing; parted Dk tubing, cut and fished tubing; fished packer seal assembly; land Dk tubing at 6313' and GL at 5681'.

Apr '90: Swab both zones.

Feb '91: Swab Dakota, return to production.

Top of Cmt @ 816' (CBL)

GL Tubing: 1-1/2" Set at 5681'
(175 joints, 2.9#, EUE, J-55 with
turned down collars, 2.375")

DK Tubing: 1-1/2" Set at 6313'
(193 joints, 2.9#, turned down collars, 2.375",
16 joints below seal assembly, 177' above)

DV tool @ 2283'
Cmt w/775 sxs Class (reported
40 bbls circulated to surface)

Top of Cmt @ 3815' (CBL)

DV tool @ 4571'
Cmt w/525 sxs
Top of Cmt @ DV tool

Gallup Perforations:
5676' - 5706'

Baker Retrievable "D" Packer @ 5800'

Dakota Perforations:
6314' - 6563'

RBP lost in well @ 6552' (Nov '80)

5-1/2" 15.5&17#, K-55 Casing Set @ 6630'
Cemented with 425 sxs, after opening stage
tool, circulated 10 bbls cement to surface;
poor bond across Dakota, sqzd w/30 sxs.

PBTD 6552'

TD 6630'

Templeton #1E

Proposed Plug Back

Basin Dakota / Gallup

NE, Section 27, T-31-N, R-13-W, Rio Arriba County, NM

Today's Date: 4/19/99

Spud: 7/8/80

Comp: 12/26/80

Elevation: 5580' GL
5592' KB

Ojo Alamo - not present

Fruitland @ 995'

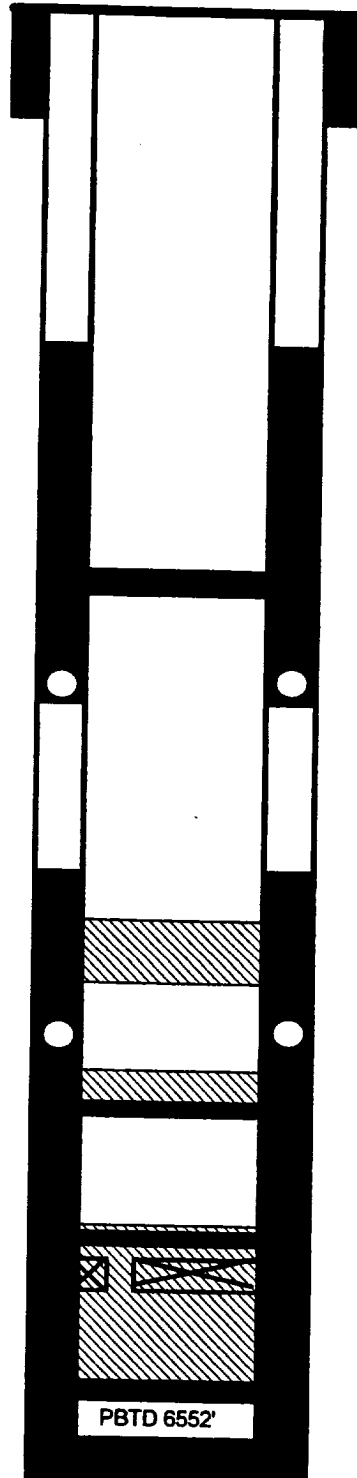
Pictured Cliffs @ 1730'

Mesaverde @ 4130'

Gallup @ 5674'

Dakota @ 6312'

12-1/4" Hole



8-5/8" 24# V-55 Csg set @ 263'
250 sxs cement (Circulated to Surface)

Top of Cmt @ 816' (CBL)

Set CIBP @ ____'

DV tool @ 2283'
Cmt w/775 sxs Class (reported
40 bbls circulated to surface)

Top of Cmt @ 3815' (CBL)

Plug #3 4180' - 4080'
Cmt with 17 sxs Class B

DV tool @ 4571'
Cmt w/525 sxs
Top of Cmt @ DV tool

Plug #2 5624' - 5524'
Cmt with 17 sxs Class B

Set CIBP @ 5624'

Gallup Perforations:
5676' - 5706'

Cement Rt @ 5780'

Plug #1 6552' - 5730'
Cmt with 105 sxs Class B,
100 sxs below CR (10%
excess) and 5 sxs above.

Baker Retrievable "D" Packer @ 5800'

Dakota Perforations:
6314' - 6563'

RBP lost in well @ 6552' (Nov '80)

5-1/2" 15.5&17#, K-55 Casing Set @ 6630'
Cemented with 425 sxs, after opening stage
tool, circulated 10 bbls cement to surface;
poor bond across Dakota, sqzd w/30 sxs.

TD 6630'