

**UNITED STATES
DEPARTMENT OF THE INTERIOR
BUREAU OF LAND MANAGEMENT**

5. LEASE DESIGNATION AND SERIAL NO.
SF078243

APPLICATION FOR PERMIT TO DRILL OR DEEPEN

1a. TYPE OF WORK

DRILL ☐DEEPEN ☐

b. TYPE OF WELL

OIL
WELL ☐GAS
WELL ☐OTHER ☐Re-entry ☐SINGLE
ZONE ☐MULTIPLE
ZONE ☐

2. NAME OF OPERATOR

Roddy Production Company Inc.

3. ADDRESS AND TELEPHONE NO.

P. O. Box 2221, Farmington, NM 87499 (505) 325-5220

4. LOCATION OF WELL (Report location clearly and in accordance with any State requirements.)

At surface

1000' FNL - 1800' FWL

At proposed prod. zone

Same

14. DISTANCE IN MILES AND DIRECTION FROM NEAREST TOWN OR POST OFFICE*

7 miles northwest of Flora Vista, NM

15. DISTANCE FROM PROPOSED*

LOCATION TO NEAREST

PROPERTY OR LEASE LINE, FT.

1000'

(Also to nearest drig. unit line, if any)

18. DISTANCE FROM PROPOSED LOCATION*
TO NEAREST WELL, DRILLING, COMPLETED,
OR APPLIED FOR, ON THIS LEASE, FT.

2700'

16. NO. OF ACRES IN LEASE

320

17. NO. OF ACRES ASSIGNED
TO THIS WELL

320

19. PROPOSED DEPTH

4900'

20. ROTARY OR CABLE TOOLS

Rotary

21. ELEVATIONS (Show whether DF, RT, GR, etc.)

5909' GR

22. APPROX. DATE WORK WILL START*

As soon as approved

23.

PROPOSED CASING AND CEMENTING PROGRAM

SIZE OF HOLE	GRADE, SIZE OF CASING	WEIGHT PER FOOT	SETTING DEPTH	QUANTITY OF CEMENT
12 1/4	5" J 55	24.5	11'	11' x 11" x 11"
7 1/2	4" J 40	11.5	11'	11' x 11" x 11"

Roddy Production Company proposes to re - enter the plugged and abandoned Snyder Oil Southern Union # 2E well bore to develop the Mesa Verde on this lease. Roddy will use the existing location and access road with minimal new disturbance. Roddy will assume liability for the final clean up of this location. A new Surface Use and 10 Point program are attached.

Roddy intends to remove the dry hole marker, install a new tubing head on the 4 1/2" casing stub, drill out the cement plugs to expose the Mesa Verde formation, block squeeze the Pt. Lookout and Menfee zones, perforate and stimulate. Upon successful completion of this operation, Roddy will install new production facilities on location and connect the well to the William's Field Services gathering facility. If the operation is unsuccessful Roddy will plug and abandon the well as before, rehabilitate and close the location.

Roddy applies for an existing road right of way as outlined in the surface use plan.

**This action is subject to technical and
procedural review pursuant to 43 CFR 3165.3,
and appeal pursuant to 43 CFR 3165.4.**

DRILLING OPERATIONS AUTHORIZED ARE
SUBJECT TO COMPLIANCE WITH ATTACHED
"GENERAL REQUIREMENTS"

IN ABOVE SPACE DESCRIBE PROPOSED PROGRAM: If proposal is to deepen, give data on present productive zone and proposed new productive zone. If proposal is to drill or deepen directionally, give pertinent data on subsurface locations and measured true vertical depths. Give blowout preventer program, if any.

24.

SIGNED

TITLE Business Manager

DATE March 31, 2000

(This space for Federal or State office use)

PERMIT NO.

APPROVAL DATE

Application approval does not warrant or certify that the applicant holds legal or equitable title to those rights in the subject lease which would entitle the applicant to conduct operations thereon.

CONDITIONS OF APPROVAL, IF ANY:

APPROVED BY

TITLE

Associate DM

DATE

5/9/00

NMAOCD

District I
PO Box 1980, Hobbs, NM 88241-1980
District II
PO Drawer DD, Artesia, NM 88211-0719
District III
1000 Rio Brazos Rd., Aztec, NM 87410
District IV
PO Box 2088, Santa Fe, NM 87504-2088

State of New Mexico
Energy, Minerals & Natural Resources Department

OIL CONSERVATION DIVISION
PO Box 2088
Santa Fe, NM 87504-2088

Form C-102
Revised February 21, 1994
Instructions on back
Submit to Appropriate District Office
State Lease - 4 Copies
Fee Lease - 3 Copies

200 APR -4 PM 12:36

☐ AMENDED REPORT

WELL LOCATION AND ACREAGE DEDICATION PLAT

1 APT Number 30 - 045 - 24387		2 Pool Code 72319		3 Pool Name Blanco Mesa Verde		
4 Property Code		5 Property Name Owen			6 Well Number 2R	
7 OGRID No. 036845		8 Operator Name Roddy Production Company Inc.			9 Elevation 5909 GR	

10 Surface Location

UL or lot no. C	Section 19	Township 31N	Range 12W	Lot Idn	Feet from the 1000	North/South line North	Feet from the 1800	East/West line West	County San Juan
--------------------	---------------	-----------------	--------------	---------	-----------------------	---------------------------	-----------------------	------------------------	--------------------

11 Bottom Hole Location If Different From Surface

UL or lot no.	Section	Township	Range	Lot Idn	Feet from the	North/South line	Feet from the	East/West line	County
---------------	---------	----------	-------	---------	---------------	------------------	---------------	----------------	--------

12 Dedicated Acres 318.24	13 Joint or Infill Y	14 Consolidation Code	15 Order No.
------------------------------	-------------------------	-----------------------	--------------

NO ALLOWABLE WILL BE ASSIGNED TO THIS COMPLETION UNTIL ALL INTERESTS HAVE BEEN CONSOLIDATED
OR A NON-STANDARD UNIT HAS BEEN APPROVED BY THE DIVISION

16				17 OPERATOR CERTIFICATION			
1 (39.08 acs)				I hereby certify that the information contained herein is true and complete to the best of my knowledge and belief			
2 (39.16 acs)				Signature R. E. Fielder			
19				Printed Name Business Manager			
MAY 2000 RECEIVED OIL CONSERVATION DIST. 3				Title March 14, 2000			
				Date			
				18 SURVEYOR CERTIFICATION			
				I hereby certify that the well location shown on this plat was plotted from field notes of actual surveys made by me or under my supervision, and that the same is true and correct to the best of my belief.			
				February 28, 1980			
				Date of Survey			
				Signature and Seal of Professional Surveyer:			
				This location not re-surveyed			
				Originally surveyed by			
				James P. Lease			
				Certificate Number			

RODDY PRODUCTION
Owen No. 2R
1000 ' FNL & 1800 ' FWL
Section 19, T31N, R12W, NMPM
San Juan County, New Mexico

TEN POINT PROGRAM

1. Surface Formation: NACIMIENTO
2. Surface Elevation: 5909' GL.
3. Estimated Formation Tops:

<u>Formation</u>	<u>Top</u>	<u>Expected Production</u>
Nacimiento	Surface	
Ojo Alamo	Not present	
Kirtland	511'	
Fruitland	1767'	
Basal Fruitland Coal	2108'	Gas
Pictured Cliffs	2250'	Gas
Lewis	2397'	
Chacra	3358'	
Cliff House	3814'	Gas / water
Menefee	4042'	Gas
Point Lookout	4614'	Gas
Mancos	4898'	
Clean Out TOTAL DEPTH	4900'	

4. Casing and Cementing Program:

All casing is in place. See attached well bore schematic for as plugged description. It is intended to drill out the cement plugs inside the 4 1/2" string and block squeeze across the Menefee and Pt. Lookout intervals with a volume sufficient to cover the 4 1/2" X 7 7/8" annulus through these zones.

5. Pressure Control Equipment:

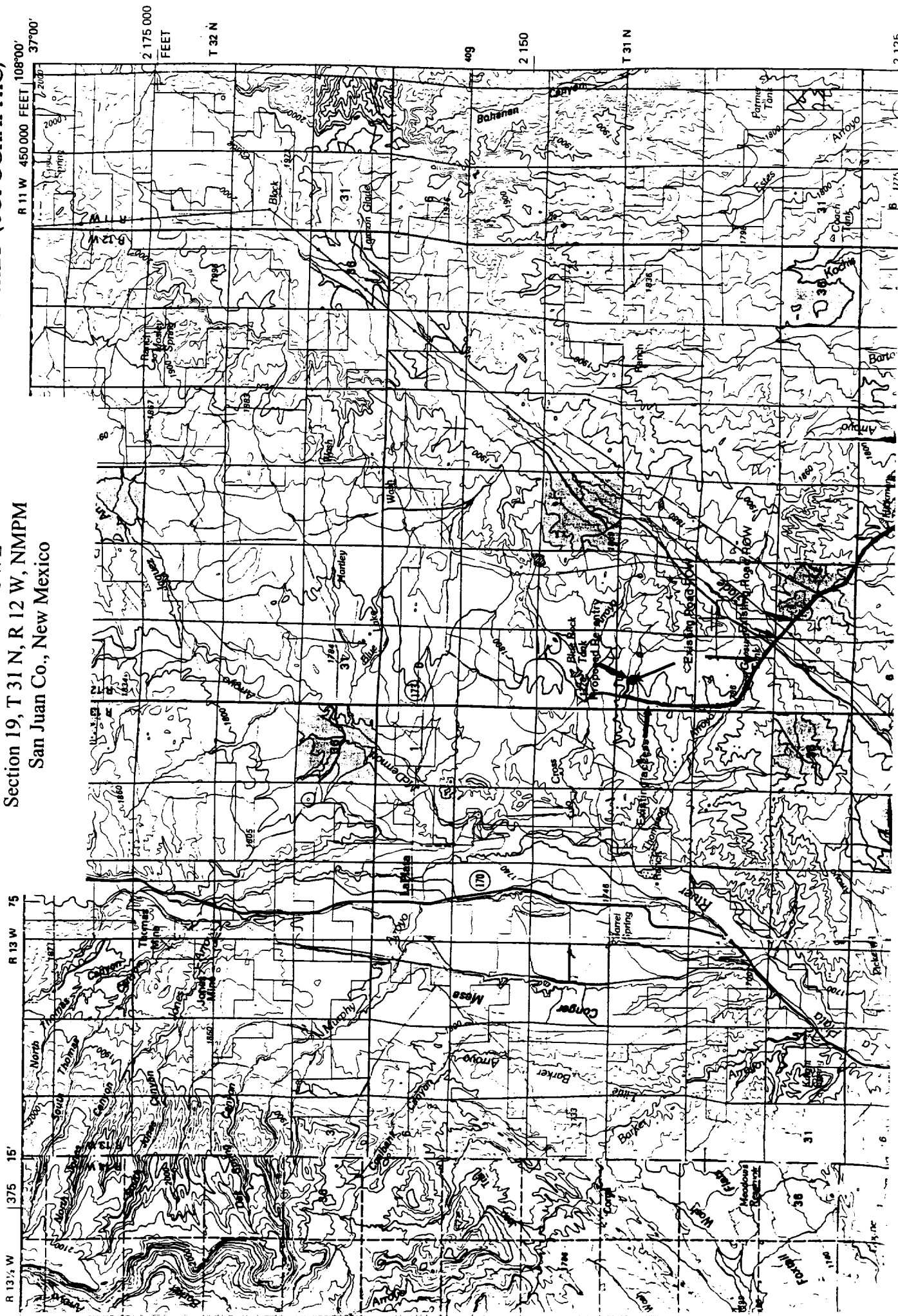
A minimum of a 7 1/16" X 3M psi BOP work over well control system will be utilized. BOPE will be installed and pressure tested to a minimum of 3000 psig before perforating and will be checked daily as to mechanical operation condition.

INUTE SERIES (TOPOGRAPHIC)

1000, FNL - 1800, FWL

Section 19, T 31 N, R 12 W, NMPM

San Juan Co., New Mexico



Roddy Production Co.
Wellbore Diagram
Owen No. 2R

