

UNITED STATES  
DEPARTMENT OF THE INTERIOR  
GEOLOGICAL SURVEY

## APPLICATION FOR PERMIT TO DRILL, DEEPEN, OR PLUG BACK

## 1a. TYPE OF WORK

DRILL ☒DEEPEN ☐PLUG BACK ☐

## b. TYPE OF WELL

OIL  
WELL ☐GAS  
WELL ☒

OTHER

SINGLE  
ZONE ☒MULTIPLE  
ZONE ☐

## 2. NAME OF OPERATOR

Consolidated Oil &amp; Gas, Inc.

## 3. ADDRESS OF OPERATOR

1860 Lincoln Street, Denver, Colorado 80295

## 4. LOCATION OF WELL (Report location clearly and in accordance with any State requirements.)

At surface

830' FNL &amp; 1610' FWL

At proposed prod. zone

Same

## 14. DISTANCE IN MILES AND DIRECTION FROM NEAREST TOWN OR POST OFFICE\*

4.3 miles SE of LaPlata PO, New Mexico

## 15. DISTANCE FROM PROPOSED\*

LOCATION TO NEAREST

PROPERTY OR LEASE LINE, FT.

(Also to nearest drig. unit line, if any)

830'

## 18. DISTANCE FROM PROPOSED LOCATION\*

TO NEAREST WELL, DRILLING COMPLETED,

OR APPLIED FOR, ON THIS LEASE, FT.

2050'

## 16. NO. OF ACRES IN LEASE

320

## 19. PROPOSED DEPTH

7200'

17. NO. OF ACRES ASSIGNED  
TO THIS WELL

N

320

## 20. ROTARY OR CABLE TOOLS

Rotary

## 21. ELEVATIONS (Show whether DF. RT. GR. etc.)

GL 5991'

## 22. APPROX. DATE WORK WILL START\*

May 31, 1980

## 23. PROPOSED CASING AND CEMENTING PROGRAM

SIZE OF HOLE	SIZE OF CASING	WEIGHT PER FOOT	SETTING DEPTH	QUANTITY OF CEMENT
12-1/4"	8-5/8"	24.0	250'	200 sx.
7-7/8"	5-1/2"	15.5	7200'	see drilling plan

1. Drill 12-1/4" hole to  $\pm$  250'. Run and set 8-5/8" casing. Circulate cement to surface.
2. WOC 12 hours.
3. Install BOPs. Pressure test casing and preventors to 1000 psig.
4. Drill 7-7/8" hole to  $\pm$  7200' with fresh water gel mud. Run electric and radioactive logs.
5. Run and set 5-1/2" casing with stage collars and cement.
6. Selectively perforate and stimulate Dakota formation and complete as required by regulations.

*gas delineated*

IN ABOVE SPACE DESCRIBE PROPOSED PROGRAM: If proposal is to deepen or plug back, give data on present productive zone and proposed new productive zone. If proposal is to drill or deepen directionally, give pertinent data on subsurface locations and measured and true vertical depths. Give blowout preventer program, if any.

24.

SIGNED James F. Sims TITLE Sr. Production Engineer DATE May 6, 1980

(This space for Federal or State office use)

PERMIT NO. \_\_\_\_\_

APPROVAL DATE \_\_\_\_\_

APPROVED BY \_\_\_\_\_

TITLE \_\_\_\_\_

CONDITIONS OF APPROVAL, IF ANY:

APPROVED  
AS AMENDEDJUN 10 1980  
JAMES F. SIMS  
DISTRICT ENGINEER

NM 000

All distances must be from the outer boundaries of the section.

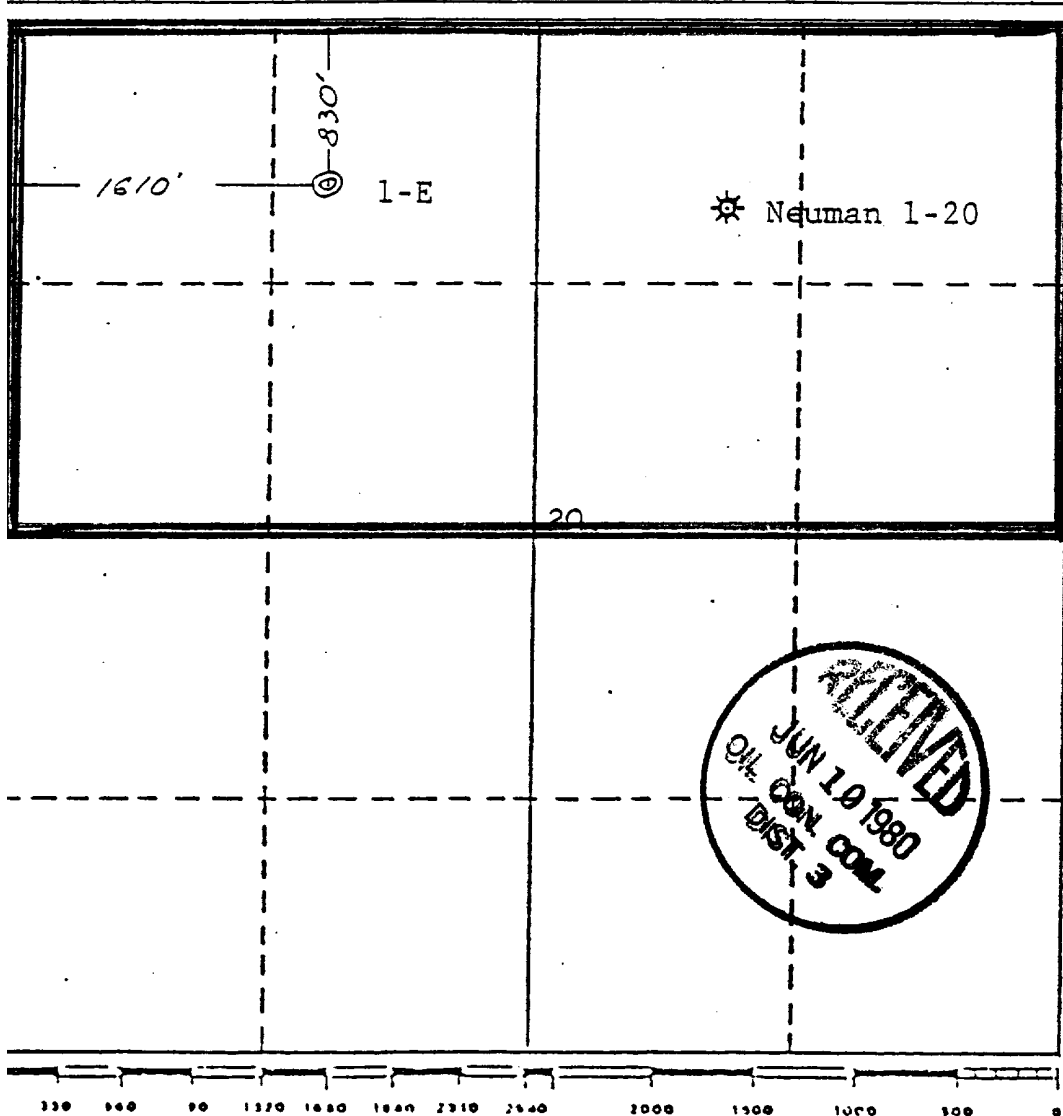
Operator <b>CONSOLIDATED OIL &amp; GAS, INC.</b>		Lease <b>NEUMAN</b>		Well No. <b>1-E</b>
Unit Letter <b>C</b>	Section <b>20</b>	Township <b>31 NORTH</b>	Range <b>12 WEST</b>	County <b>SAN JUAN</b>
Actual Postage Location of Well:				
830 feet from the <b>NORTH</b> line and		1610 feet from the <b>WEST</b> line		
Ground Level Elev. <b>5991</b>	Producing Formation <b>Dakota</b>	Pool <b>Basin Dakota</b>	Dedicated Acreage <b>320</b> Acres	

1. Outline the acreage dedicated to the subject well by colored pencil or hatchure marks on the plat below.
2. If more than one lease is dedicated to the well, outline each and identify the ownership thereof (both as to working interest and royalty).
3. If more than one lease of different ownership is dedicated to the well, have the interests of all owners been consolidated by communitization, unitization, force-pooling, etc?

☐ Yes ☐ No If answer is "yes," type of consolidation \_\_\_\_\_

If answer is "no," list the owners and tract descriptions which have actually been consolidated. (Use reverse side of this form if necessary.) \_\_\_\_\_

No allowable will be assigned to the well until all interests have been consolidated (by communitization, unitization, forced-pooling, or otherwise) or until a non-standard unit, eliminating such interests, has been approved by the Division.



## CERTIFICATION

I hereby certify that the information contained herein is true and complete to the best of my knowledge and belief.

Name Merle J. Savage  
 Position Sr. Production Engineer  
 Company Consolidated Oil & Gas, Inc.  
 Date May 6, 1980

I hereby certify that the location shown on this plat was plotted from field notes of a professional survey made by me or under my supervision and that the same is true and correct to the best of my knowledge and belief.

**REGISTERED PROFESSIONAL ENGINEER**  
**STATE OF NEW MEXICO**  
**NO. 1463**  
**JAMES P. LEESE**

Date Surveyed February 29, 1980  
 Registered Professional Engineer and/or Land Surveyor  
James P. Leese  
 Certificate No. 1463

DEVELOPMENT PLAN FOR SURFACE USE

NEUMAN No. 1-E

Consolidated Oil & Gas, Inc. - Operator

NM 021126

NE NW Sec. 20, T31N, R12W  
San Juan County, New Mexico

1. Existing Roads

See enclosed topographic map (Attachment "A") which shows existing improved and unimproved roads.

2. Planned Access Roads

See enclosed topographic map (Attachment "A"). No new roads planned.

3. Location of Existing Wells

See enclosed lease map (Attachment "B").

4. Location of Existing and/or Proposed Facilities

See enclosed lease map (Attachment "B") showing location of wells and facilities operated by Consolidated Oil & Gas, Inc. If production is encountered, the tank battery and other required producing equipment will be located per attached completion plat (Attachment "C").

5. Location and Type of Water Supply

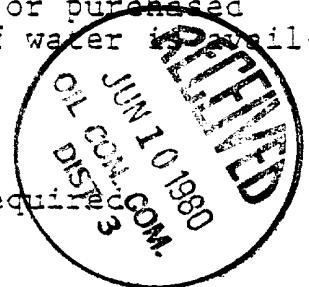
Water for drilling will be trucked approximately fifteen miles from an irrigation canal in Aztec, New Mexico or purchased locally and transported via irrigation pipe if water is available.

6. Source of Construction Materials

No additional construction material will be required.

7. Methods of Handling Waste Disposal

All waste material will be contained by earthen and steel pits. Earthen pits will be subsequently backfilled and buried. A portable chemical toilet will be furnished for drilling personnel.



8. Ancillary Facilities

No separate drill campsites are proposed.

9. Wellsite Layout

The drilling site location will be graded and will approximate 200' x 250' with natural drainage to the northwest. Care will be taken while grading to control erosion.

10. Plans for Restoration of Surface

A. Following drilling and completion operations, all equipment and material not needed for operations will be removed. Pits containing fluid will be fenced until filled with any additional pits filled and the location cleaned of all trash and junk.

B. After abandonment, any special rehabilitation and/or re-vegetation requirements (reseed with seed mixture No. 2) will be complied with and accomplished as expeditiously as possible. All pits should be filled and leveled within 90 days after abandonment.

11. Other Information

The location is on the side of a slope in a rolling hills area, with sandy clay topsoil and vegetation consisting of scattered scrub cedar and pine as well as rabbit brush and native grasses. No residences or structures are nearby. The surface rights are leased by F. F. Montoya, La Plata, New Mexico. If, during operations, any historic or prehistoric ruin, monument or site, or any object of antiquity is discovered, work will be suspended and the discovery will be reported to the appropriate regulatory agency.

12. Operator's Representative

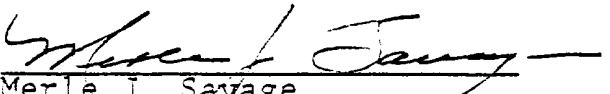
Consolidated Oil & Gas, Inc.  
Merle J. Savage, Senior Production Engineer  
1860 Lincoln Street, Suite 1300  
Denver, Colorado 80295  
Phone (303) 861-5252

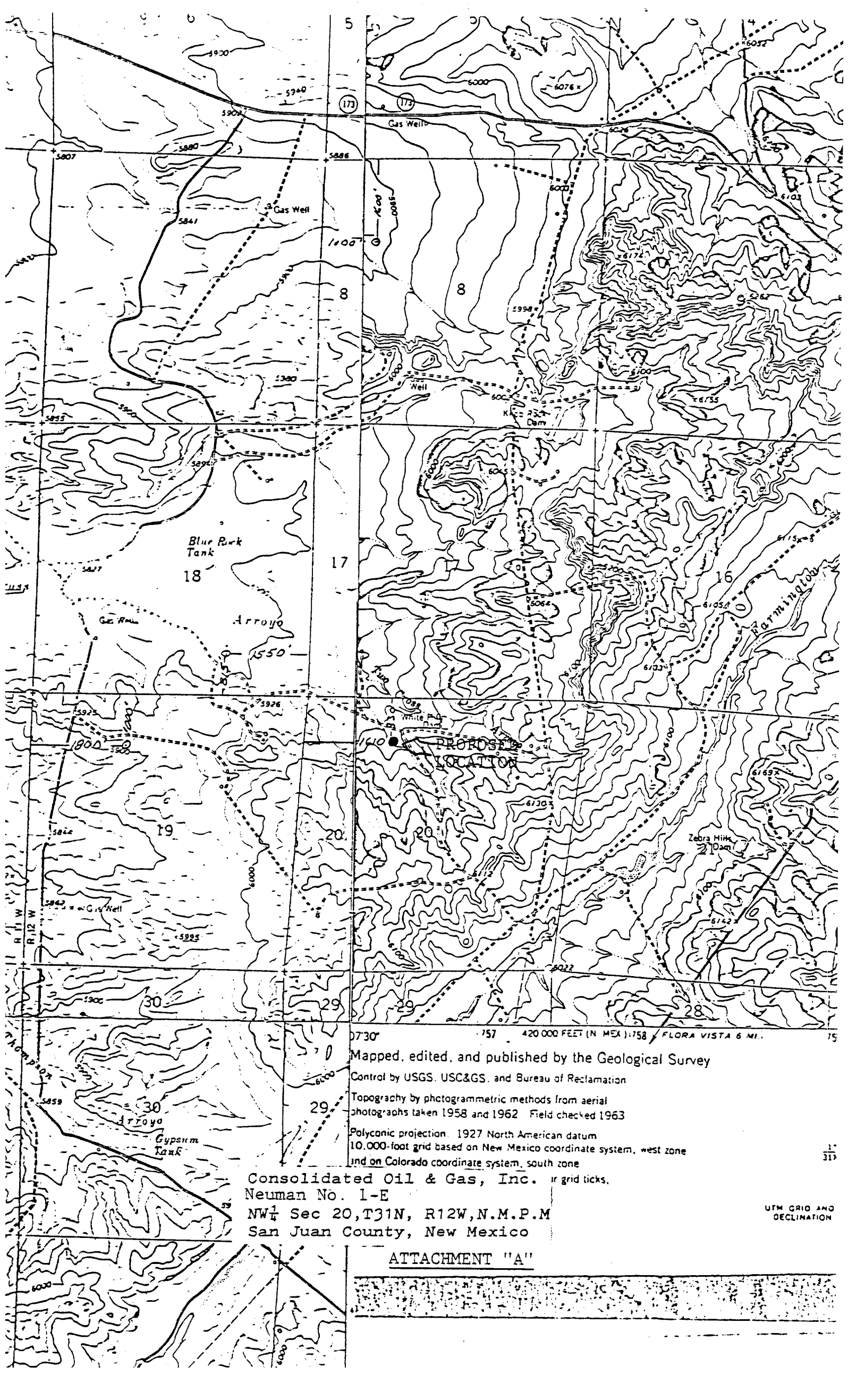
13. Certification

I hereby certify that I, or persons under my direct supervision, have inspected the proposed drillsite and access route; that I am familiar with the conditions which presently exist; that the statements made in this plan are, to the best of my knowledge, true and correct; and that the work associated with the operations proposed herein will be performed by Consolidated Oil & Gas, Inc. and its contractors and sub-contractors in conformity with this plan and the terms and conditions under which it is approved.

May 6, 1980

                      
Date

  
Merle J. Savage  
Senior Production Engineer



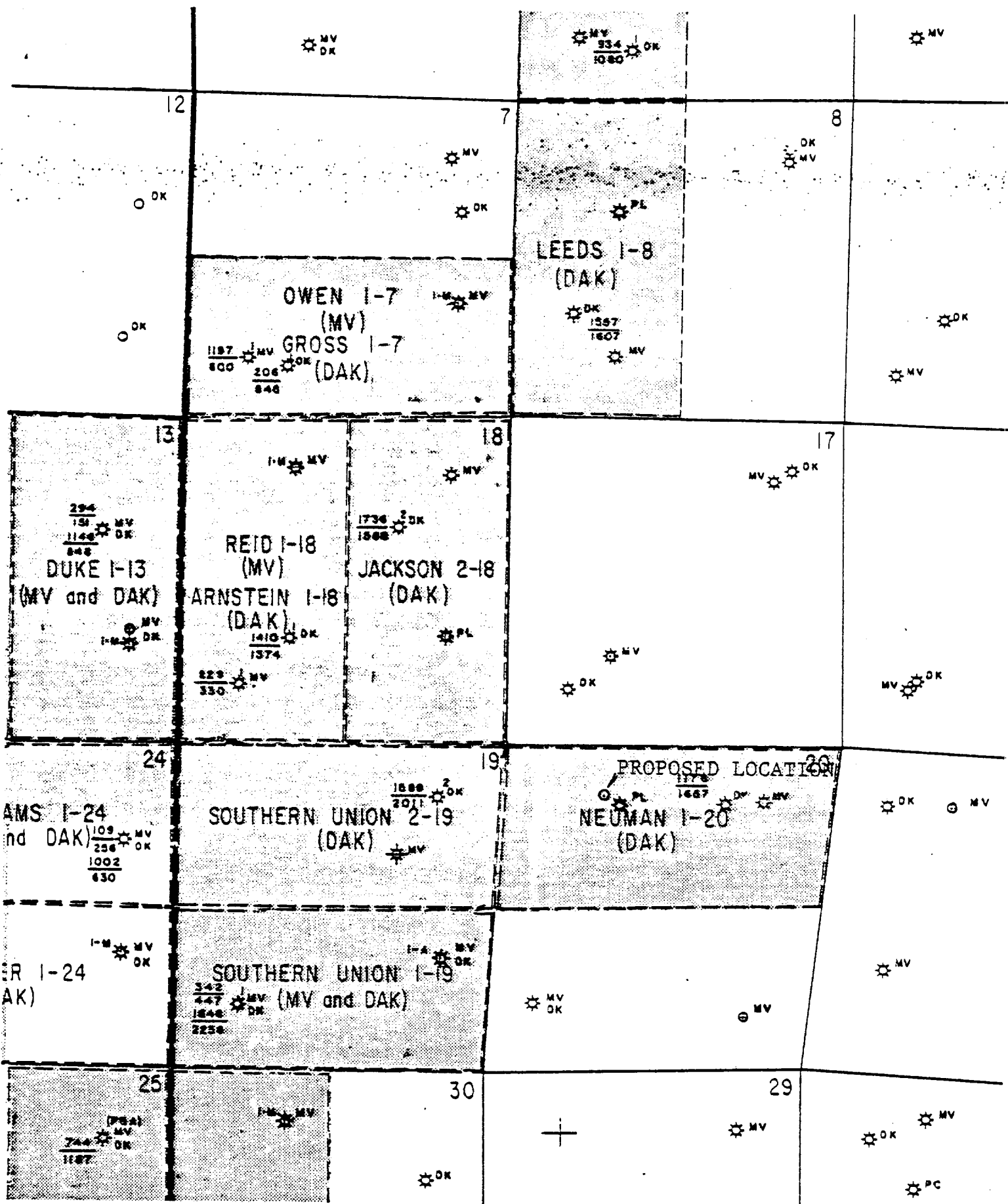
0730' 157 420 000 FEET (N. MEX.) 1:758 FLORA VISTA 6 MI. 15

Mapped, edited, and published by the Geological Survey  
Control by USGS, USC&GS, and Bureau of Reclamation  
Topography by photogrammetric methods from aerial  
photographs taken 1958 and 1962 Field checked 1963  
Polyconic projection, 1927 North American datum  
10,000-foot grid based on New Mexico coordinate system, west zone  
and on Colorado coordinate system, south zone

Consolidated Oil & Gas, Inc. ir grid ticks,  
Neuman No. 1-E  
NW $\frac{1}{4}$  Sec 20, T31N, R12W, N.M.P.M  
San Juan County, New Mexico

UTM GRID AND  
DECLINATION

ATTACHMENT "A"



# ATTACHMENT "B"

Development Plan for Surface Use

Consolidated Oil & Gas, Inc.

NEUMAN No. 1-E

NM 021126

NE NW Sec. 20, T31N, R12W

San Juan County, New Mexico

ATTACHMENT "C"

DEVELOPMENT PLAN FOR SURFACE USE

CONSOLIDATED OIL & GAS, INC. - OPERATOR

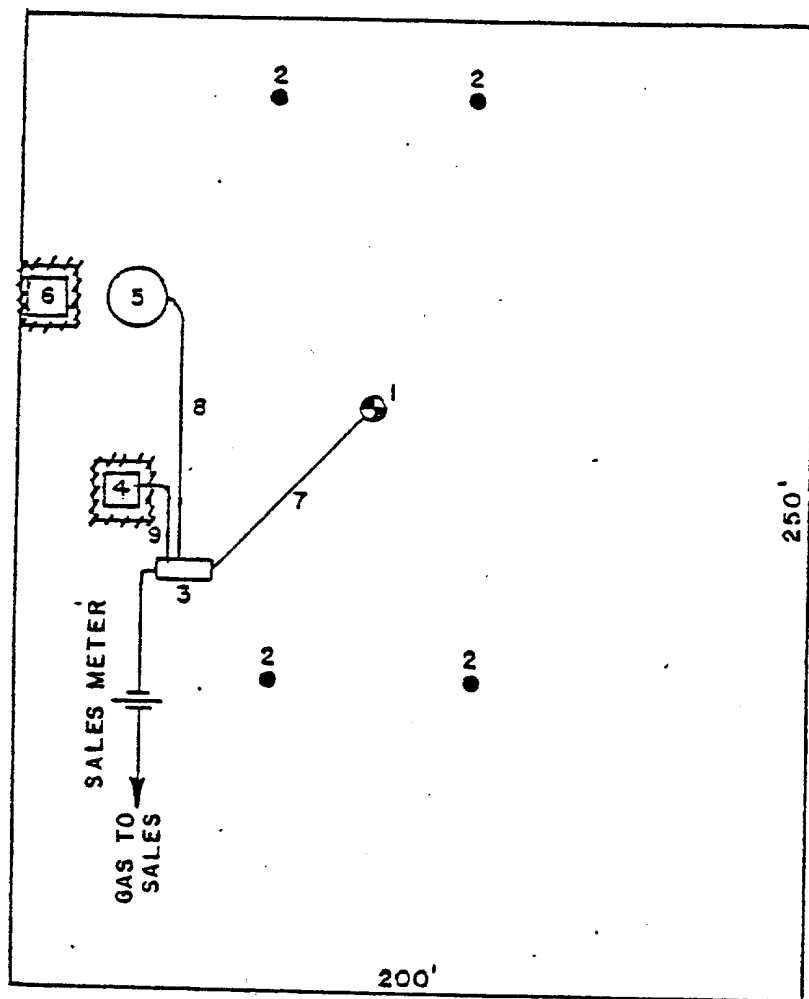
NEUMAN No. 1-E

NM 021126

NE NW Sec. 20, T31N, R12W

San Juan County, New Mexico

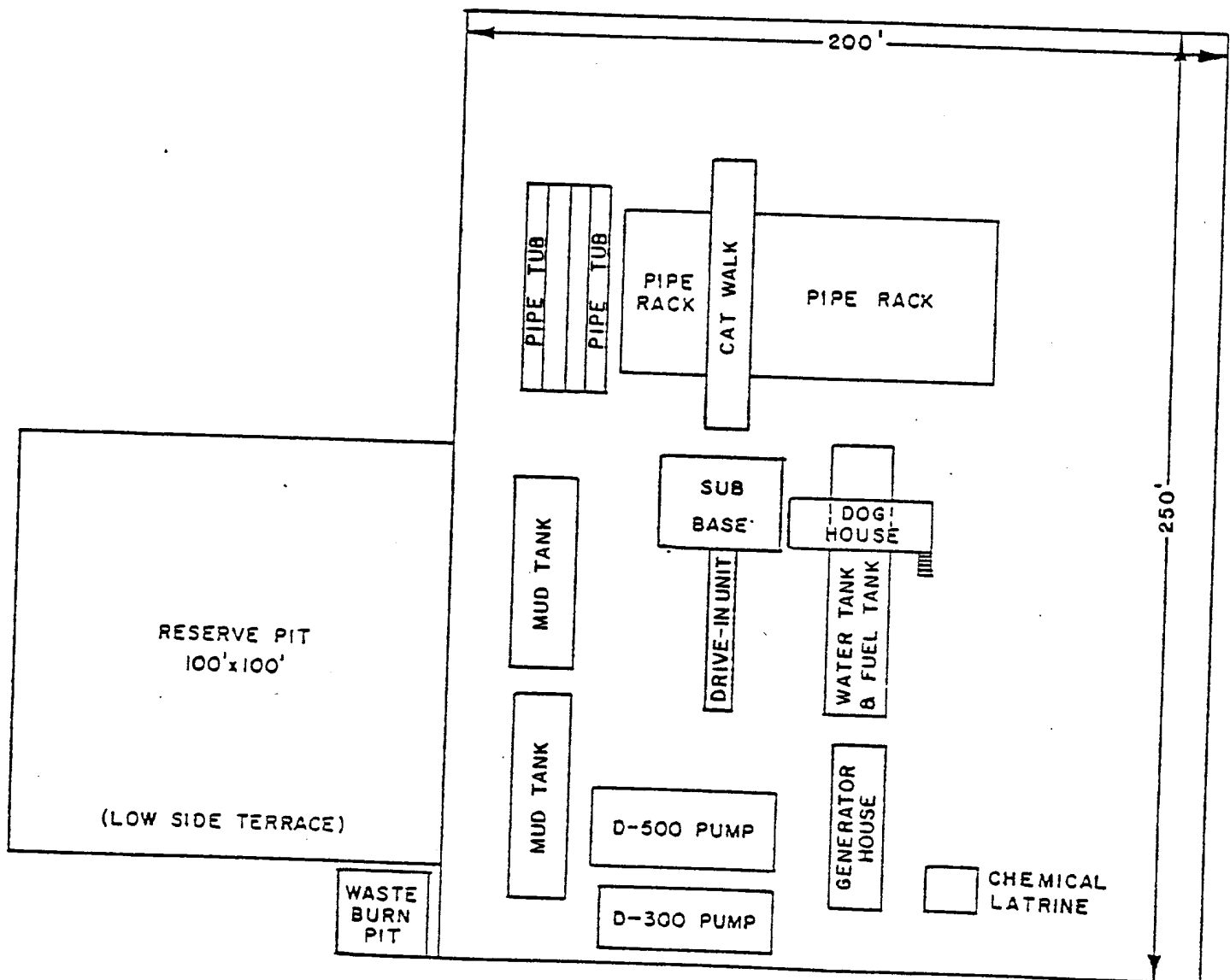
1. Well
2. Dead Men
3. Prod. Unit
4. Water Pit
5. 300 bbl. Oil Tank
6. Water Pit
7. 2" Buried flow line
8. 1½" Oil Line
9. 1½" Water Line



1" equals 50'

Fence - - - - -





ATTACHMENT "D"

DEVELOPMENT PLAN FOR SURFACE USE

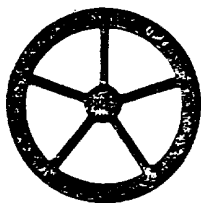
CONSOLIDATED OIL & GAS, INC. - OPERATOR

NEUMAN No. 1-E

NM 021126

NE NW Sec. 20, T31N, R12W

San Juan County, New Mexico



# Consolidated Oil & Gas, Inc.

LINCOLN TOWER BUILDING  
1860 LINCOLN STREET  
DENVER, COLORADO 80295  
(303) 861-5252

May 6, 1980

U. S. Geological Survey  
P. O. Box 959  
Farmington, New Mexico 87401

Re: Application for Permit to Drill  
Neuman No. 1-E  
San Juan County, New Mexico

Gentlemen:

Following is the information requested in NTL-6 to accompany the permit to drill:

1. Location: 830' FNL & 1610' FWL, "C", Sec. 20, T31N, R12W, NMPM  
San Juan County, New Mexico
2. Elevation of Unprepared Ground: 5991'
3. Geologic Name of Surface Formation: Nacimiento
4. Type of Drilling Tools: Rotary
5. Proposed Drilling Depth: 7200'
6. Estimated Geologic Markers:
7. Anticipated Gas & Oil

Ojo Alamo	400'	
Pictured Cliffs	2348'	X
Cliff House	3943'	X
Pt. Lookout	4711'	X
Greenhorn	6748'	
Dakota	6800'	X

8. Casing Program and Setting Depth:

	<u>Size</u>	<u>Weight</u>	<u>Grade</u>	<u>Condition</u>	<u>Setting Depth</u>
Surface	8-5/8"	24.0#	K-55	New	250'
Production	5-1/2"	15.5#	K-55	New	7200'

9. Casing Setting Depth and Cementing:

Surface casing will be set at 250'. Cement will be circulated to surface with approximately 200 sx. Class "B" neat cement containing 2%  $\text{CaCl}_2$ .

Cementing Prognosis:

Production casing will be run to total depth. Two stage collars will be run in the casing string at approximately 1350' and 4900'. The casing will be cemented in three stages as follows:

1st Stage: 60 sx. 65/35 Pozmix with 12% gel, tailed in with 160 sx. 50/50 Pozmix with 4% gel and 0.5% FLA.

2nd Stage: 120 sx. 65/35 Pozmix with 6% gel, tailed in with 160 sx. 50/50 Pozmix with 4% gel and 0.4% FLA.

3rd Stage: 240 sx. 65/35 Pozmix with 12% gel, tailed in with 50 sx. 50/50 Pozmix with 2% gel and 0.4% FLA.

Note: Exact volume of cement to be determined after running Caliper log.

10. Pressure Control Equipment: See attached diagram "A".

11. Circulating Media: 0-250' fresh water spud mud; 250'-TD fresh water, low solid mud with following properties:

Viscosity 32-28 sec., water loss 20-6 cc, weight 8.5-9.0 ppg with heavier weights if required by well conditions.

12. Testing, Logging and Coring Programs:

- a. Open hole logs will be run prior to running production casing.
- b. Coring is not planned.

13. Abnormal Pressure or Temperature and Hydrogen Sulfide Gas:

We do not anticipate abnormal pressure, temperature or hydrogen sulfide gas; however, a remote control blowout preventer as shown on attached diagram "A" will be installed.

14. Anticipated Starting Date: Drilling operations should start shortly after May 31, 1980.

15. Other Facets of the Proposed Operations: None

Yours very truly,

CONSOLIDATED OIL & GAS, INC.



Merle J. Savage  
Senior Production Engineer

MJS:lt  
Attach.

DIAGRAM "A"

U.S.G.S. APPLICATION FOR PERMIT  
TO DRILL

CONSOLIDATED OIL & GAS, INC - OPERA

Neuman No. 1-E

NM 021126

NE NW Sec. 20, T31N, R12W  
San Juan County, New Mexico

