

UNITED STATES
DEPARTMENT OF THE INTERIOR
GEOLOGICAL SURVEY

APPLICATION FOR PERMIT TO DRILL, DEEPEN, OR PLUG BACK

1a. TYPE OF WORK

DRILL ☒DEEPEN ☐PLUG BACK ☐

b. TYPE OF WELL

OIL
WELL ☐GAS
WELL ☒

OTHER

SINGLE
ZONE ☒MULTIPLE
ZONE ☐

2. NAME OF OPERATOR

Northwest Pipeline Corporation

3. ADDRESS OF OPERATOR

P.O. Box 90, Farmington, New Mexico 87401

4. LOCATION OF WELL (Report location clearly and in accordance with any State requirements.)

At surface 1480' FNL & 830' FEL, Sec 33, T32N, R7W

At proposed prod. zone Same as above

14. DISTANCE IN MILES AND DIRECTION FROM NEAREST TOWN OR POST OFFICE*

20 Miles South of Ignacio, Colorado

15. DISTANCE FROM PROPOSED*

LOCATION TO NEAREST
PROPERTY OR LEASE LINE, FT.

(Also to nearest drig. unit line, if any)

830'

18. DISTANCE FROM PROPOSED LOCATION*

TO NEAREST WELL, DRILLING COMPLETED,
OR APPLIED FOR, ON THIS LEASE, FT.

N/A

16. NO. OF ACRES IN LEASE

N/A

19. PROPOSED DEPTH

3750'

17. NO. OF ACRES ASSIGNED
TO THIS WELL

160

20. ROTARY OR CABLE TOOLS

Rotary

21. ELEVATIONS (Show whether DF, RT, GR, etc.)

6675' GR

22. APPROX. DATE WORK WILL START*

September 1980

23.

PROPOSED CASING AND CEMENTING PROGRAM

SIZE OF HOLE	SIZE OF CASING	WEIGHT PER FOOT	SETTING DEPTH	QUANTITY OF CEMENT
12-1/4"	8-5/8"	24#	120'	100 Sks
6-1/4"	2-7/8"	6.4#	3750'	200 Sks

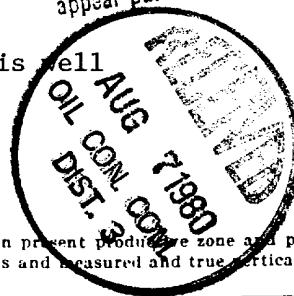
DRILLING OPERATIONS AUTHORIZED ARE
SUBJECT TO COMPLIANCE WITH ATTACHED
"GENERAL REQUIREMENTS"Selectively perforate and stimulate the Pictured Cliffs Formation.
Completion plans will be determined at Total Depth.A BOP will be installed after the surface casing is set and cemented. This operation is subject to administrative
work will be conducted through the BOP's. appeal pursuant to 30 CFR 250.290

The Northeast quarter of section 33 is dedicated to this well

Gas is dedicated.

RECEIVED

JUN 28 1980



IN ABOVE SPACE DESCRIBE PROPOSED PROGRAM. If proposal is to deepen or plug back, give data on present productive zone and proposed new productive zone. If proposal is to drill or deepen directionally, give pertinent data on subsurface locations and measured and true vertical depths. Give blowout preventer program, if any.

24.

SIGNED

Paul C. Thompson

TITLE Drilling Engineer

DATE June 5, 1980

(This space is for State office use)

AS AMENDED

APPROVAL DATE

AUG 6 1980

JAMES F. SIMS

DISTRICT ENGINEER

TITLE

DATE

*See Instructions On Reverse Side

NEW MEXICO OIL CONSERVATION COMMISSION
WELL LOCATION AND ACREAGE DEDICATION PLAT

Form C-102
Supersedes C-128
Effective 1-1-65

All distances must be from the outer boundaries of the Section.

Operator NORTHWEST PIPELINE CORPORATION			Lease SAN JUAN 32-7 UNIT		Well No. 72
Unit Letter H	Section 33	Township 32N	Range 7W	County San Juan	
Actual Footage Location of Well: 1480 feet from the North line and 830 feet from the East line					
Ground Level Elev. 6675	Producing Formation Pictured Cliffs	Pool South Los Pinos PC Field		Dedicated Acreage: 160 Acres	

1. Outline the acreage dedicated to the subject well by colored pencil or hachure marks on the plat below.
2. If more than one lease is dedicated to the well, outline each and identify the ownership thereof (both as to working interest and royalty).
3. If more than one lease of different ownership is dedicated to the well, have the interests of all owners been consolidated by communitization, unitization, force-pooling, etc?

NORTHWEST PIPELINE CORPORATION

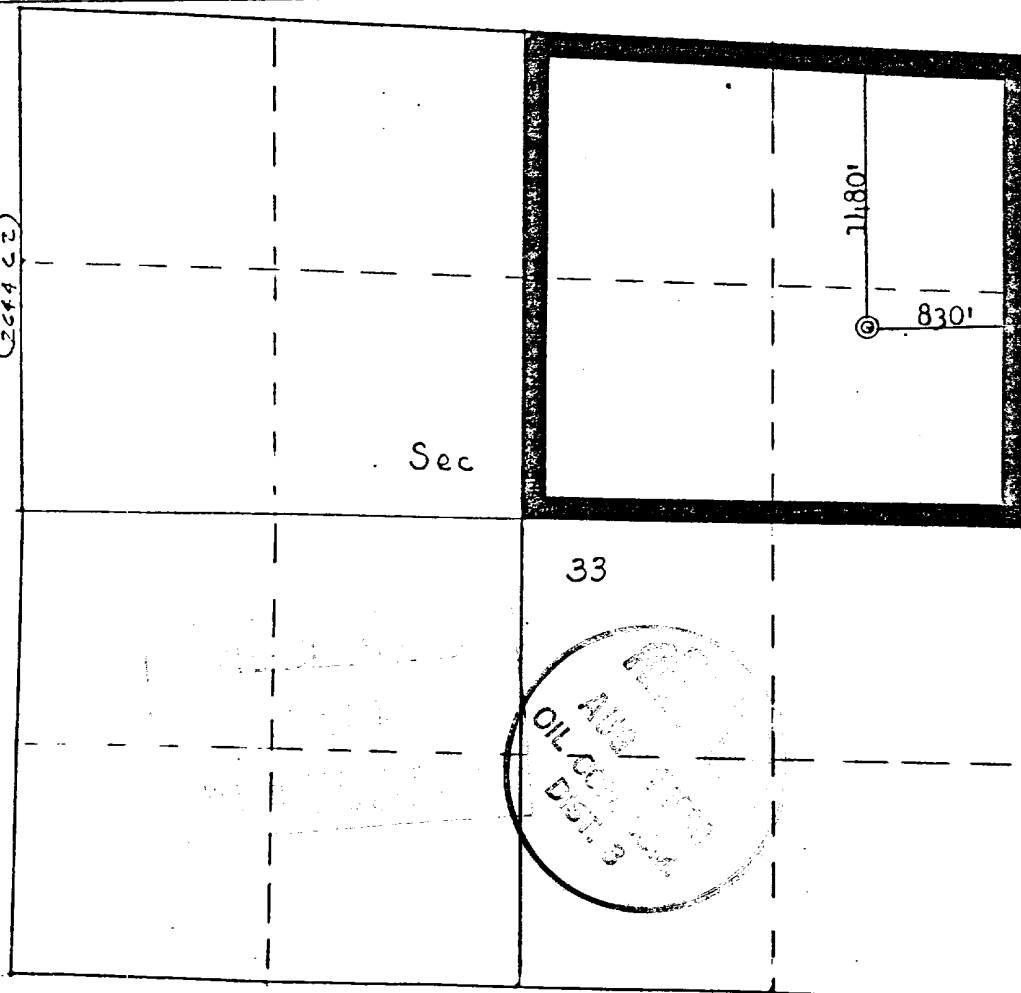
MAY 26 1980

☒ Yes ☐ No If answer is "yes," type of consolidation Unitization

PRODUCTION AND DRILLING

If answer is "no," list the owners and tract descriptions which have actually been consolidated. (Use reverse side of this form if necessary.)

No allowable will be assigned to the well until all interests have been consolidated (by communitization, unitization, forced-pooling, or otherwise) or until a non-standard unit, eliminating such interests, has been approved by the Commission.



CERTIFICATION

I hereby certify that the information contained herein is true and complete to the best of my knowledge and belief.

Paul C. Thompson

Name
Paul C. Thompson

Position
Drilling Engineer

Company
Northwest Pipeline Corp.

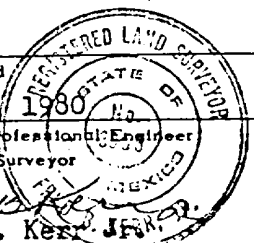
Date
May 27, 1980

I hereby certify that the well location shown on this plat was plotted from field notes of actual surveys made by me or under my supervision, and that the same is true and correct to the best of my knowledge and belief.

Date Surveyed
May 20, 1980
Registered Professional Engineer and Land Surveyor

Fred B. Kern
Fred B. Kern

Certificate No.
3950



NORTHWEST PIPELINE CORPORATION
DRILLING PROGNOSIS

San Juan 32-7 Unit #72

I. LOCATION: 830' FEL 1480' FNL
Sec 33 T32N R7W
San Juan Co., New Mexico

DATE: June 16, 1980
ELEVATION: 6675' GR

FIELD: South Los Pinos Pictured Cliff

SURFACE: BLM
MINERALS: FED SF 078543

II. GEOLOGY: Surface Formation: San Jose

A. <u>Formation Tops</u> :	<u>Depth</u>	<u>Formation Tops</u> :	<u>Depth</u>
Ojo Alamo	2495'	Pictured Cliffs	3495'
Kirtland	2560'	Total Depth	3750'
Fruitland	3138'		

B. Logging Program: I-ES and Neutron-Density with Gamma Ray at Total Depth.

III. DRILLING:

A. Contractor:

B. Mud Program: Mud and water will be furnished by Northwest Pipeline Corp.

a) From Surface to Total Depth to be drilled with mud.

b) While drill pipe is in use the pipe rams will be tested not less than once each day. The blind rams will be tested once each trip. All tests will be recorded in the Northwest Pipeline tour reports as to time and date.

IV. MATERIALS:

A. Casing Program:

<u>Hole Size</u>	<u>Depth</u>	<u>Casing Size</u>	<u>Wt & Grade</u>
12-1/4"	120'	8-5/8"	24# K-55
6-1/4"	3750'	2-7/8"	6.4# J-55

B. Float Equipment:

a) Surface Casing: 8-5/8" Larkin Guide Shoe (Fig 102).

b) Production Casing: 2-7/8" - 6' to 8' joint with notched collar on bottom and a 2-7/8" Halliburton Baffle (Fig 801.03095) on top of the shoe joint. Use two (2) 3-1/16" rubber balls and one (1) Halliburton Omega Latch-in Plug (Fig 801.0292) above cement in a 3-1/4" I.D. Plug container cementing head. Run six B&W centralizers (Fig 72281-00) on bottom six joints. Pump plug, followed by one barrel of 7-1/2% acetic acid. As soon as plug is bumped, pressure up to 4000 psi test casing.

C. Tubing: NONE.

D. Well Head Equipment: Larkin.

V. Cementing:

A. Surface Casing: 8-5/8" - Use 100 sacks of Class "B" cement with 1/4# Flocele/sack and 3% CaCl₂ (100% excess). WOC 12 hrs.

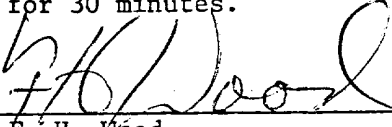
B. Production Casing: 2-7/8" - Use 100 sks Class "B" 65/35 poz w/ 12% gel and 12-1/2# of fine gilsonite per sack. Tail in with 100 sacks of Class "B" cement with 6% gel and 10# gilsonite/sk. (Slurry volume - 358 cu.ft). (70% excess to fill to the top of the Ojo Alamo).

Drilling Prognosis
San Juan 32-7 Unit #72
Page #2


V. Cementing Cont'd:

Run temp survey after 12 hrs.

***NOTE: Test Surface casing to 600 psi for 30 minutes.

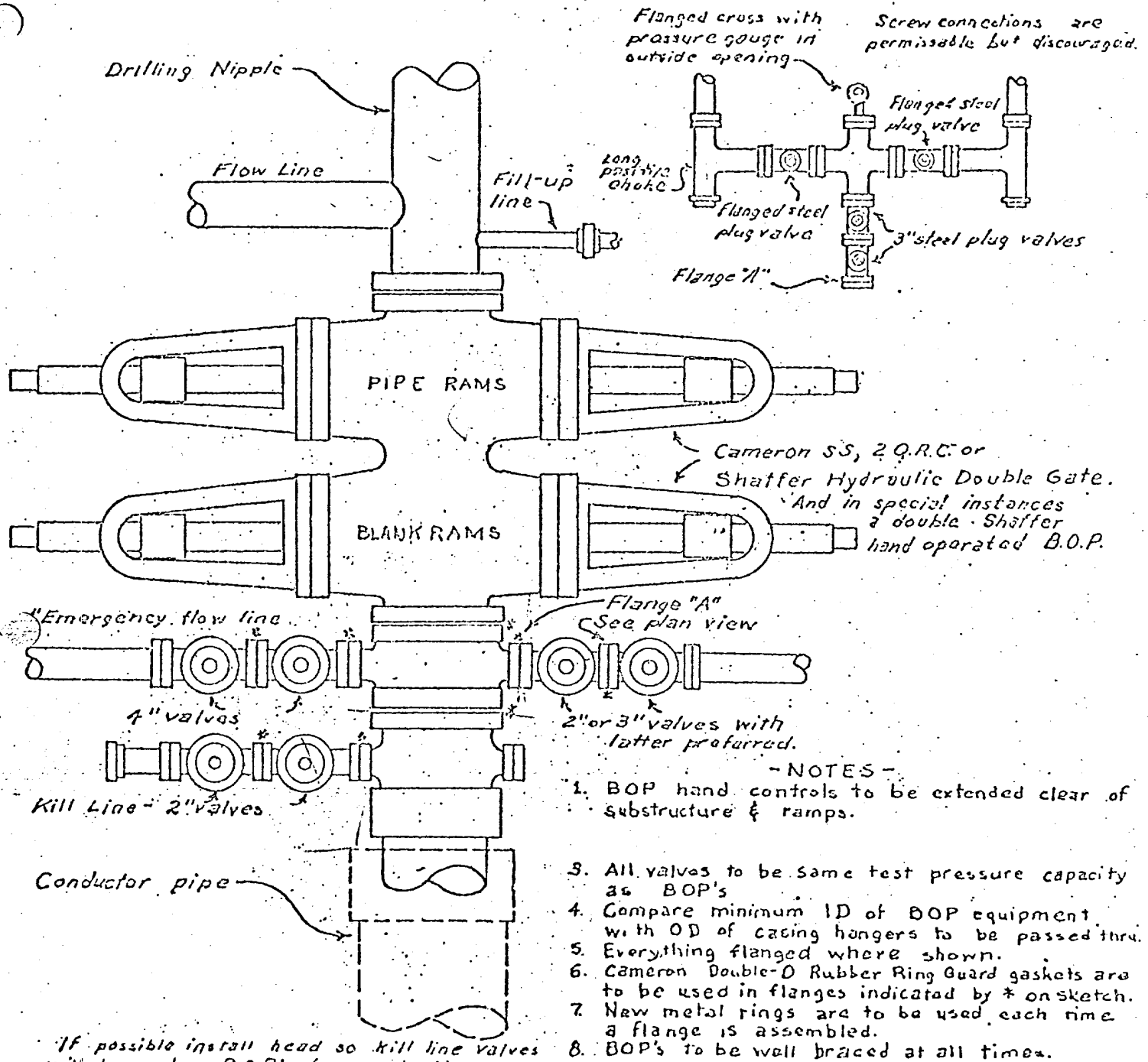


F. H. Wood


MJT/djb

Original: Well File
sc: Regular Distribution

PLAN VIEW - CHOKE MANIFOLD



If possible install head so kill line valves will be under BOP's for protection. These valves to be kept closed after BOP's tested & kill line removed (by use of quick union) to fill-up line. When used this way kill line must be high-pressure.

SINGLE PIPE RAM BLOWOUT PREVENTOR HOOKUP

1. Existing Roads: See attached topographic map. All existing roads used, shall be maintained in a serviceable condition at all times during the drilling operation.
2. Planned Access Roads: See attached topographic map. Maximum grade is approximately 1%. The road surface will not exceed twenty feet in width. Upon completion of drilling operations the access road will be adequately drained to control runoff and soil erosion. Drainage facilities may include ditches, water bars, culverts or any other measure deemed necessary. All activities will be confined to the access road and drill pad.
3. Location of Existing Wells: See attached topographic map.
4. Location of Tank Batteries; Production Facilities; and Production, Gathering and Service Lines: See attached topographic map for locations of existing and proposed gas gathering lines.
5. Location and Type of Water Supply: Water needed for the drilling operation will be hauled from the Pine River.
6. Source of Construction Materials: No additional materials will be needed.
7. Methods for Handling Waste Disposal: All garbage, debris, and trash will be buried at least three feet deep. A portable toilet will be supplied for human waste. After drilling operations have been completed the reserve pit will be fenced and the liquid portion will be allowed to evaporate before the location is cleaned up and leveled. The earthen pits will not be located on natural drainages and will be constructed in such a manner so that they will not leak. Any evaporator pit containing toxic liquids will be fenced.
8. Ancillary Facilities: There will be no camps or airstrips associated with the drilling of this well.
9. Well Site Layout: See attached location layout sheet. ^{Blank} There will be a drainage ditch above the cut slope.
10. Plans for Restoration of the Surface: Upon completion of drilling, the location will be cleaned, and leveled so that no cut or fill banks will be steeper than 3:1.

All of the area disturbed in connection with the drill site will be seeded as close as possible for any above ground equipment while still allowing for access to the equipment. Seeding will be done within one year after drilling is completed and during the period from July 1 through September 15. Seeding will be done with seed Mixture #1.

All equipment above ground will be painted a non-glare, non-reflective, non-chalking color that simulates the natural color of the site. For this well code number 595-34127, green.

11. Other Information: If, during operations, any historic or prehistoric ruin, monument or site, or any object of antiquity is discovered, then work will be suspended and the discovery will be reported to the District Manager of the BLM.

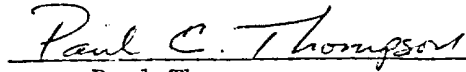
All liquids from the line will be contained at the site unless otherwise specified by the surface agency's representative.

When drilling with gas, the line used to discharge and burn off the gas will be located so as not to damage vegetation in the area, and if necessary an earthen screen will be constructed to protect the vegetation. All liquids from the line will be contained at the site unless otherwise specified by the surface agency's representative.

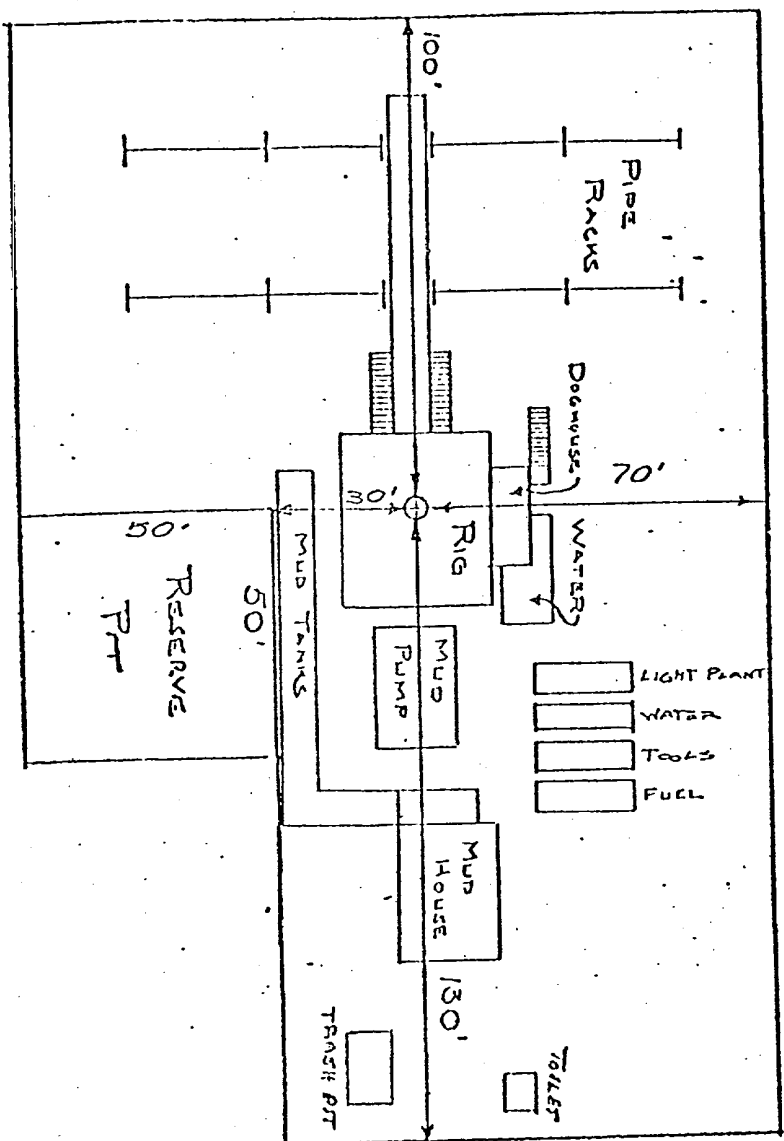
The area covered by the location and proposed access road is gently sloped with scattered brush and some grasses.

12. Operator's Representative: Paul Thompson - , P.O. Box 90 - Farmington, New Mexico 87401. Phone: 327-5351 Extension # 115
13. Certification:

I hereby certify that I have inspected the proposed drillsite and access route; that I am familiar with the conditions which presently exist; that the statements made in this plan are, to the best of my knowledge true and correct; and, that the work associated with the operations proposed herein will be performed by Northwest Pipeline Corporation and its contractors and subcontractors in conformity with this plan and the terms and conditions under which it is approved.


Paul Thompson
Drilling Engineer

NORTH WEST PIPELINE CORPORATION
 LOCATION LAYOUT SAN JUAN 32-7 UNIT # 72



DATE: 6/9/80
 SCALE: 1cm = 20'



Vicinity Map for
NORTHWEST PIPELINE CORP. #72 SAN JUAN 32-7 UNIT
1480' FNL 830' FEL Sec. 33-T32N-R7W
SAN JUAN COUNTY, NEW MEXICO