

UNITED STATES  
DEPARTMENT OF THE INTERIOR  
GEOLOGICAL SURVEY

RECEIVED

36-145-24587

5. LEASE DESIGNATION AND SERIAL NO.

SF 078463

6. IF INDIAN, ALLOTTEE OR TRIBE NAME

7. UNIT AGREEMENT NAME

8. FARM OR LEASE NAME

Nance

9. WELL NO.

1-E

10. FIELD AND POOL, OR WILDCAT

Basin Dakota

11. SEC., T., R., M., OR BLK.  
AND SURVEY OR AREA

Sec. 27, T31N, R13W

12. COUNTY OR PARISH

San Juan

13. STATE

New Mexico

## APPLICATION FOR PERMIT TO DRILL, DEEPEN, OR PLUG BACK

1a. TYPE OF WORK

DRILL ☒DEEPEN ☐U.S. PLUG BACK ☐

b. TYPE OF WELL

OIL  
WELL ☐GAS  
WELL ☒

OTHER

SINGLE  
ZONE ☒MULTIPLE  
ZONE ☐

2. NAME OF OPERATOR

Consolidated Oil &amp; Gas, Inc.

3. ADDRESS OF OPERATOR

1860 Lincoln Street, Denver, Colorado 80295

4. LOCATION OF WELL (Report location clearly and in accordance with any State requirements.)\*

At surface

790' FSL &amp; 1850' FWL

At proposed prod. zone

Same

14. DISTANCE IN MILES AND DIRECTION FROM NEAREST TOWN OR POST OFFICE\*

1.5 miles from LaPlata PO

15. DISTANCE FROM PROPOSED\*

LOCATION TO NEAREST  
PROPERTY OR LEASE LINE, FT.  
(Also to nearest drlg. unit line, if any)

790'

16. NO. OF ACRES IN LEASE

320

17. NO. OF ACRES ASSIGNED  
TO THIS WELL

5/320

18. DISTANCE FROM PROPOSED LOCATION\*  
TO NEAREST WELL, DRILLING, COMPLETED,  
OR APPLIED FOR, ON THIS LEASE, FT.

1350'

19. PROPOSED DEPTH

6600

20. ROTARY OR CABLE TOOLS

Rotary

21. ELEVATIONS (Show whether DF, RT, GR, etc.)

GL 5570'

22. APPROX. DATE WORK WILL START\*

April 25, 1980

## 23. PROPOSED CASING AND CEMENTING PROGRAM

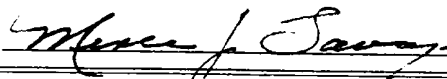
SIZE OF HOLE	SIZE OF CASING	WEIGHT PER FOOT	SETTING DEPTH	QUANTITY OF CEMENT
12-1/4"	8-5/8"	24.0#	250	200 sx.
7-7/8"	5-1/2"	15.5#	6600'	

1. Drill 12-1/4" hole to  $\pm$  250'. Run and set 8-5/8" casing. Circulate cement to surface.
2. WOC 12 hours.
3. Install BOPs. Pressure test casing and preventors to 1000 psig.
4. Drill 7-7/8" hole to  $\pm$  6600' with fresh water gel mud. Run electric and radioactive logs.
5. Run and set 5-1/2" casing with stage collars and cement.
6. Selectively perforate and stimulate Dakota formation and complete as required by regulations.

IN ABOVE SPACE DESCRIBE PROPOSED PROGRAM: If proposal is to deepen or plug back, give data on present productive zone and proposed new productive zone. If proposal is to drill or deepen directionally, give pertinent data on subsurface locations and measured and true vertical depths. Give blowout preventer program, if any.

24.

SIGNED



TITLE

Sr. Production Engineer

DATE

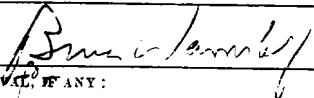
April 2, 1980

(This space for Federal or State office use)

PERMIT NO.

APPROVAL DATE

APPROVED BY



TITLE

DATE

CONDITIONS OF APPROVAL, IF ANY:

NSL-1256

ch 3me

RECEIVED

NEW MEXICO OIL CONSERVATION COMMISSION  
WELL LOCATION AND ACREAGE DEDICATION PLAT

Form C-102  
Supersedes C-120  
Effective 1-1-65

All distances must be from the outer boundaries of the Section.

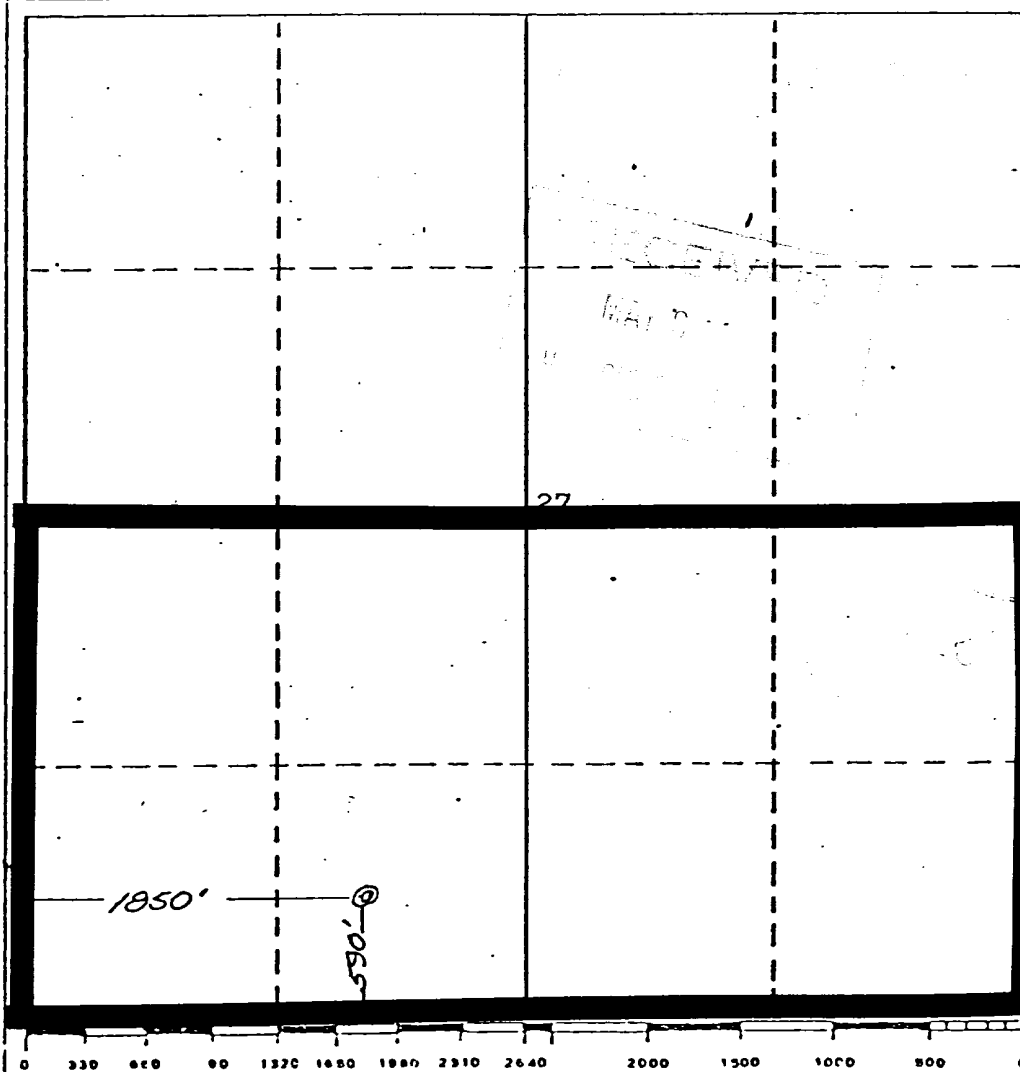
Operator <b>CONSOLIDATED OIL &amp; GAS, INC.</b>			Lease <b>NANCE</b>		Well No. <b>1-E</b>
Unit Letter <b>N</b>	Section <b>27</b>	Township <b>31 NORTH</b>	Range <b>13 WEST</b>	County <b>SAN JUAN</b>	
Actual Footage Location of Well:					
<b>590</b> feet from the <b>SOUTH</b> line and		<b>1850</b> feet from the <b>WEST</b> line			
Ground Level Elev. <b>5595</b>	Producing Formation <b>DAKOTA</b>	Pool <b>BASIC</b>	Dedicated Acreage: <b>320</b> Acres		

1. Outline the acreage dedicated to the subject well by colored pencil or hatchure marks on the plat below.
2. If more than one lease is dedicated to the well, outline each and identify the ownership thereof (both as to working interest and royalty).
3. If more than one lease of different ownership is dedicated to the well, have the interests of all owners been consolidated by communitization, unitization, force-pooling, etc?

☐ Yes ☐ No If answer is "yes," type of consolidation \_\_\_\_\_

If answer is "no," list the owners and tract descriptions which have actually been consolidated. (Use reverse side of this form if necessary.) \_\_\_\_\_

No allowable will be assigned to the well until all interests have been consolidated (by communitization, unitization, forced-pooling, or otherwise) or until a non-standard unit, eliminating such interests, has been approved by the Commission.



CERTIFICATION

I hereby certify that the information contained herein is true and complete to the best of my knowledge and belief.

*Dale Richardson*  
Name

Dale Richardson

Position

Drilling Supt.

Company

Consolidated Oil & Gas

Date

May 19, 1980

I hereby certify that the location shown on this plat as plotted from field notes actually made by me or under my supervision, and that the same is true and correct to the best of my knowledge and belief.

Date Surveyed

May 15, 1980

Registered Professional Engineer and/or Land Surveyor

*James P. Lease*  
James P. Lease

Certificate No.

1463

UNITED STATES  
DEPARTMENT OF THE INTERIOR  
GEOLOGICAL SURVEY

Form Approved.  
Budget Bureau No. 42-R1424

**SUNDRY NOTICES AND REPORTS ON WELLS**

(Do not use this form for proposals to drill or to deepen or plug back to a different reservoir. Use Form 9-331-C for such proposals.)

1. oil ☐ gas ☒ other ☐

2. NAME OF OPERATOR  
CONSOLIDATED OIL & GAS INC.

3. ADDRESS OF OPERATOR  
P.O. BOX 2038 FARMINGTON, NEW MEXICO

4. LOCATION OF WELL (REPORT LOCATION CLEARLY. See space 17 below.) (CHANGE LOCATION)  
AT SURFACE: 590' FSL & 1850' FWL  
AT TOP PROD. INTERVAL:  
AT TOTAL DEPTH:

16. CHECK APPROPRIATE BOX TO INDICATE NATURE OF NOTICE, REPORT, OR OTHER DATA

REQUEST FOR APPROVAL TO:  
TEST WATER SHUT-OFF ☐  
FRACTURE TREAT ☐  
SHOOT OR ACIDIZE ☐  
REPAIR WELL ☐  
PULL OR ALTER CASING ☐  
MULTIPLE COMPLETE ☐  
CHANGE ZONES ☐  
ABANDON\* ☐  
(other) CHANGE LOCATION ☐

SUBSEQUENT REPORT OF:

☐  
☐  
☐  
☐  
☐  
☐  
☐  
☐  
☐  
☐

5. LEASE  
SF 078463

6. IF INDIAN, ALLOTTEE OR TRIBE NAME

7. UNIT AGREEMENT NAME

8. FARM OR LEASE NAME  
NANCE

9. WELL NO.  
1-E

10. FIELD OR WILDCAT NAME  
BASIN DAKOTA

11. SEC., T., R., M. OR BLK. AND SURVEY OR AREA  
SEC. 27 T31N R13W

12. COUNTY OR PARISH  
SAN JUAN

13. STATE  
N.M.

14. API NO.

15. ELEVATIONS (SHOW DF, KDB, AND WD)  
5570' GL

(NOTE: Report results of multiple completion or zone change on Form 9-330.)

17. DESCRIBE PROPOSED OR COMPLETED OPERATIONS (Clearly state all pertinent details, and give pertinent dates, including estimated date of starting any proposed work. If well is directionally drilled, give subsurface locations and measured and true vertical depths for all markers and zones pertinent to this work.)\*

THE NANCE 1-E LOCATION HAS BEEN CHANGED FROM 790' FSL & 1850' FWL OF SEC. 27, T31N, R13W TO THE NEW LOCATION, 590' FSL & 1850' FWL OF SEC. 27, T31N, R13 W OF SAN JUAN COUNTY, NEW MEXICO. THIS CHANGE WAS AT THE REQUEST OF TOM PERRY OF THE ARCHAEOLOGIST DEPT. OF THE BUREAU OF LAND MANAGEMENT IN FARMINGTON, NEW MEXICO. CONSOLIDATED HAS MADE AN APPLICATION WITH THE STATE FOR AN UNORTHODOX LOCATION.

Subsurface Safety Valve: Manu. and Type

18. I hereby certify that the foregoing is true and correct

SIGNED John L. Liburd TITLE DRLG. SUPT. DATE SEP 26 1980

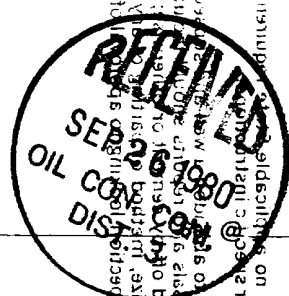
(This space for Federal or State office use)

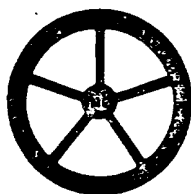
APPROVED BY \_\_\_\_\_ TITLE \_\_\_\_\_ DATE \_\_\_\_\_  
CONDITIONS OF APPROVAL, IF ANY:

*Byrne*

\*See Instructions on Reverse Side

NMOCC





LINCOLN TOWER BUILDING  
1860 LINCOLN STREET  
DENVER, COLORADO 80295  
(303) 861-5252

# Consolidated Oil & Gas, Inc.

RECEIVED

APR 10 1980

U. S. GEOLOGICAL SURVEY  
FARMINGTON, N. M.

April 2, 1980

U. S. Geological Survey  
P. O. Box 959  
Farmington, New Mexico 87401

Re: Application for Permit to Drill  
Nance No. 1-E  
San Juan County, New Mexico

Gentlemen:

Following is the information requested in NTL-6 to accompany the permit to drill:

1. Location: 790' FSL & 1850' FWL, "M", Sec. 27, T31N, R13W  
San Juan County, New Mexico
2. Elevation of Unprepared Ground: 5590'
3. Geologic Name of Surface Formation: Nacimiento
4. Type of Drilling Tools: Rotary
5. Proposed Drilling Depth: 6600'
6. Estimated Geologic Markers:
7. Anticipated Gas & Oil

Ojo Alamo	300'	
Pictured Cliffs	1700'	X
Cliff House	3315'	X
Pt. Lookout	4090'	X
Greenhorn	6160'	
Dakota	6280'	X

8. Casing Program and Setting Depth:

	<u>Size</u>	<u>Weight</u>	<u>Grade</u>	<u>Condition</u>	<u>Setting Depth</u>
Surface	8-5/8"	24.0#	K-55	New	250'
Production	5-1/2"	15.5#	K-55	New	6600'

NEW

9. Casing Setting Depth and Cementing:

Surface casing will be set at 250'. Cement will be circulated to surface with approximately 200 sx. Class "B" neat cement containing 2%  $\text{CaCl}_2$ .

Cementing Prognosis:

Production casing will be run to total depth. Two stage collars will be run in the casing string at approximately 1350' and 4900'. The casing will be cemented in three stages as follows:

1st Stage: 60 sx. 65/35 Pozmix with 12% gel, tailed in with 160 sx. 50/50 Pozmix with 4% gel and 0.5% FLA.

2nd Stage: 120 sx. 65/35 Pozmix with 6% gel, tailed in with 160 sx. 50/50 Pozmix with 4% gel and 0.4% FLA.

3rd Stage: 240 sx. 65/35 Pozmix with 12% gel, tailed in with 50 sx. 50/50 Pozmix with 2% gel and 0.4% FLA.

Note: Exact volume of cement to be determined after running Caliper log.

10. Pressure Control Equipment: See attached diagram "A".

11. Circulating Media: 0-250' fresh water spud mud; 250'-TD fresh water, low solid mud with following properties:

Viscosity 32-28 sec., water loss 20-6 cc, weight 8.5-9.0 ppg with heavier weights if required by well conditions.

12. Testing, Logging and Coring Programs:

a. Open hole logs will be run prior to running production casing.

b. Coring is not planned.

13. Abnormal Pressure or Temperature and Hydrogen Sulfide Gas:

We do not anticipate abnormal pressure, temperature or hydrogen sulfide gas; however, a remote control blowout preventer as shown on attached diagram "A" will be installed.

14. Anticipated Starting Date: Drilling operations should start shortly after April 25, 1980.

15. Other Facets of the Proposed Operations: None

Yours very truly,

CONSOLIDATED OIL & GAS, INC.



Merle J. Savage  
Senior Production Engineer

MJS:lt  
Attach.

DIAGRAM "A"

U.S.G.S. APPLICATION FOR PERMIT  
TO DRILL

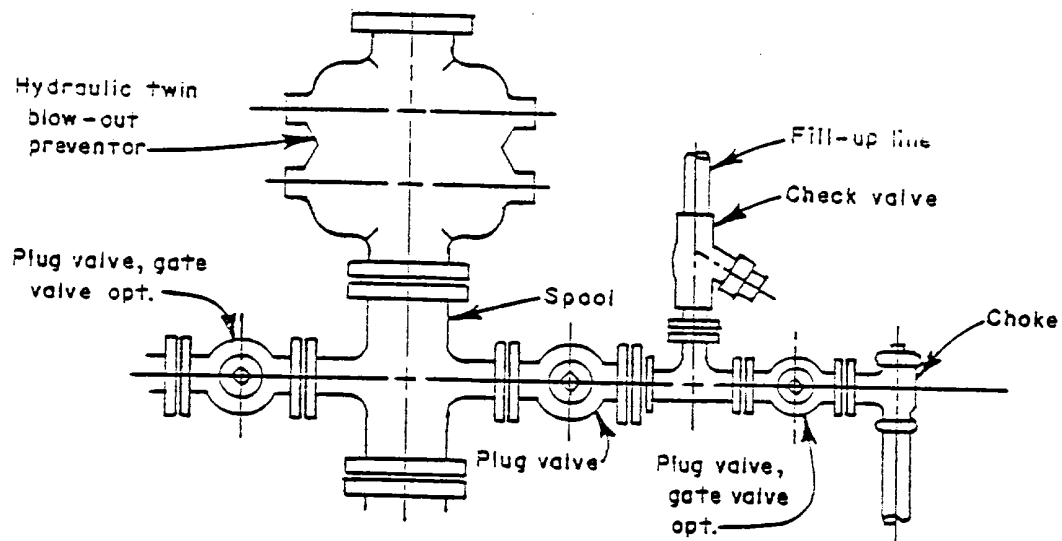
CONSOLIDATED OIL & GAS, INC. - OPERATOR

NANCE No. 1-E

SF 078463

SE SW Sec. 27, T31N, R13W

San Juan County, New Mexico



DEVELOPMENT PLAN FOR SURFACE USE

NANCE No. 1-E

Consolidated Oil & Gas, Inc. - Operator

SF 078463

SE SW Sec. 27, T31N, R13W

San Juan County, New Mexico

1. Existing Roads

See enclosed topographic map (Attachment "A") which shows existing improved and unimproved roads.

2. Planned Access Roads

See enclosed topographic map (Attachment "A"). The new road will be approximately 300' long & 12' wide approaching the well from the southeast.

3. Location of Existing Wells

See enclosed lease map (Attachment "B").

4. Location of Existing and/or Proposed Facilities

See enclosed lease map (Attachment "B") showing location of wells and facilities operated by Consolidated Oil & Gas, Inc. If production is encountered, the tank battery and other required producing equipment will be located per attached completion plat (Attachment "C").

5. Location and Type of Water Supply

Water for drilling will be trucked approximately fifteen miles from an irrigation canal in Aztec, New Mexico or purchased locally and transported via irrigation pipe if water is available.

6. Source of Construction Materials

No additional construction material will be required.

7. Methods of Handling Waste Disposal

All waste material will be contained by earthen and steel pits. Earthen pits will be subsequently backfilled and buried. A portable chemical toilet will be furnished for drilling personnel.

8. Ancillary Facilities

No separate drill campsites are proposed.

9. Wellsite Layout

The drilling site location will be graded and will approximate 200' x 250' with natural drainage to the northwest. Care will be taken while grading to control erosion.

10. Plans for Restoration of Surface

- A. Following drilling and completion operations, all equipment and material not needed for operations will be removed. Pits containing fluid will be fenced until filled with any additional pits filled and the location cleaned of all trash and junk.
- B. After abandonment, any special rehabilitation and/or revegetation requirements (reseed with seed mixture No. 2) will be complied with and accomplished as expeditiously as possible. All pits should be filled and leveled within 90 days after abandonment.

11. Other Information

The location is on the side of a slope in a rolling hills area, with sandy clay topsoil and vegetation consisting of scattered scrub cedar and pine as well as rabbit brush and native grasses. No residences or structures are nearby. The surface rights are leased by Warren Utton, Aztec, New Mexico. If, during operations, any historic or prehistoric ruin, monument or site, or any object of antiquity is discovered, work will be suspended and the discovery will be reported to the appropriate regulatory agency.

12. Operator's Representative

Consolidated Oil & Gas, Inc.  
Merle J. Savage, Senior Production Engineer  
1860 Lincoln Street, Suite 1300  
Denver, Colorado 80295  
Phone (303) 861-5252



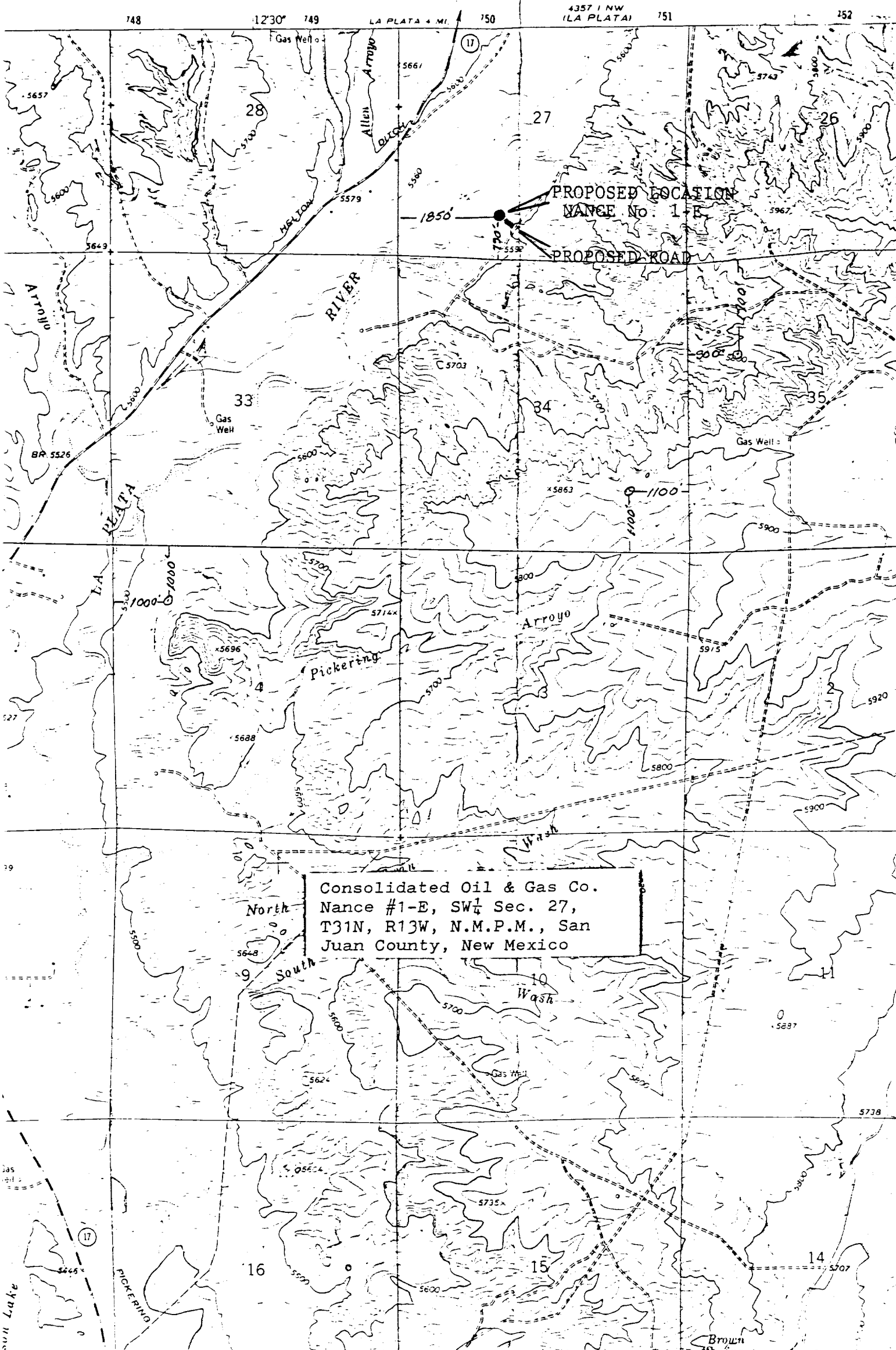
13. Certification

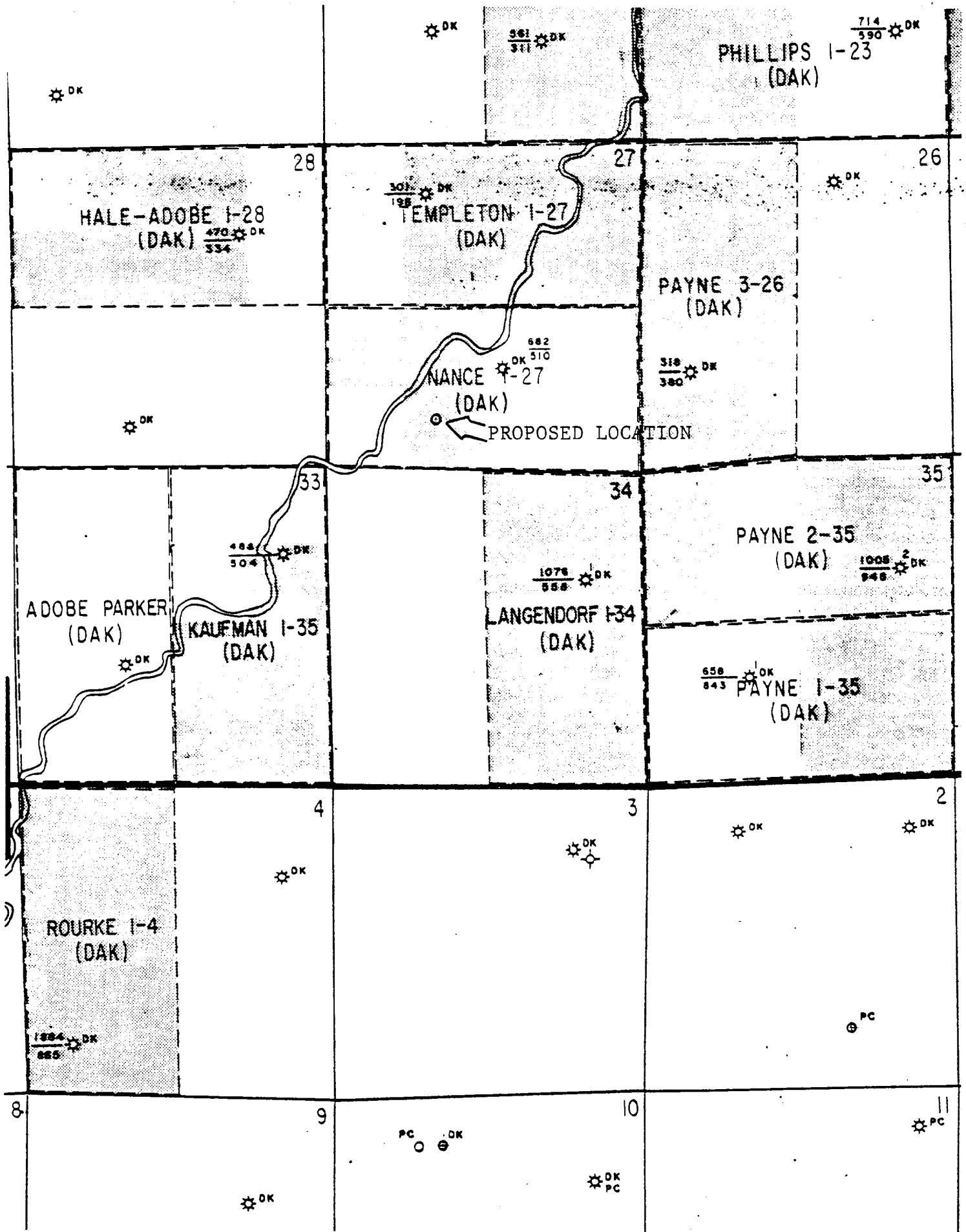
I hereby certify that I, or persons under my direct supervision, have inspected the proposed drillsite and access route; that I am familiar with the conditions which presently exist; that the statements made in this plan are, to the best of my knowledge, true and correct; and that the work associated with the operations proposed herein will be performed by Consolidated Oil & Gas, Inc. and its contractors and sub-contractors in conformity with this plan and the terms and conditions under which it is approved.

8 April 80  
Date

Merle J. Savage  
Merle J. Savage  
Senior Production Engineer

# ATTACHMENT "A"





ATTACHMENT "B"

Development Plan for Surface Use

Consolidated Oil & Gas, Inc.

NANCE No. 1-E

SF 078463

SE SW Sec. 27, T31N, R13W

San Juan County, New Mexico

ATTACHMENT "C"

DEVELOPMENT PLAN FOR SURFACE USE

CONSOLIDATED OIL & GAS, INC. - OPERATOR

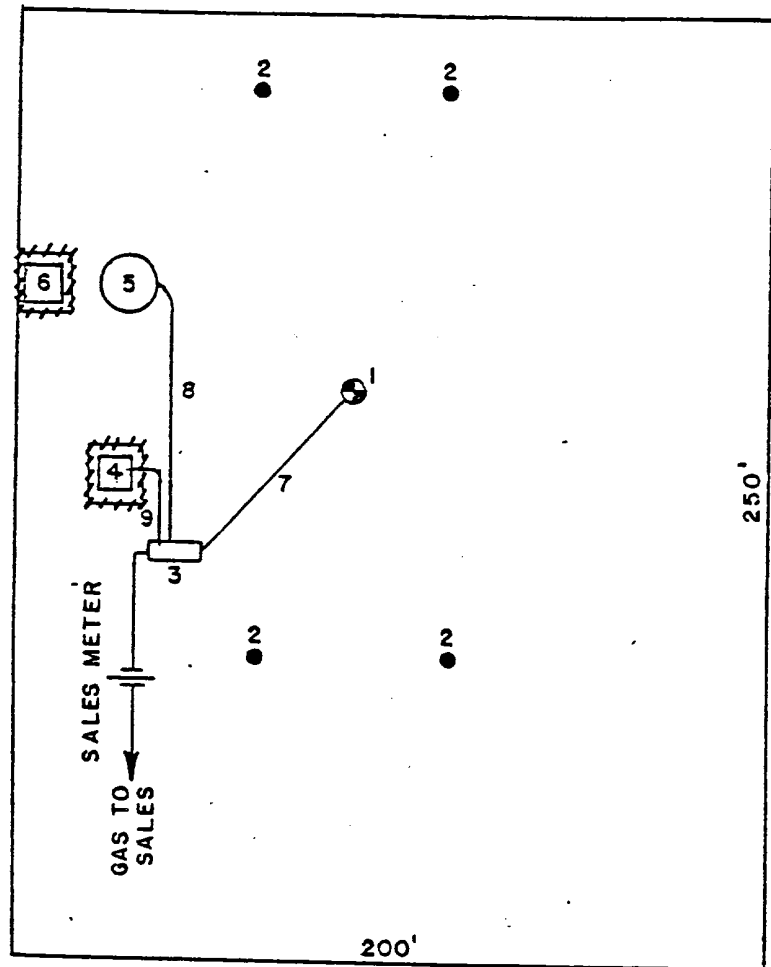
NANCE No. 1-E

SF 078463

SE SW Sec. 27, T31N, R13W

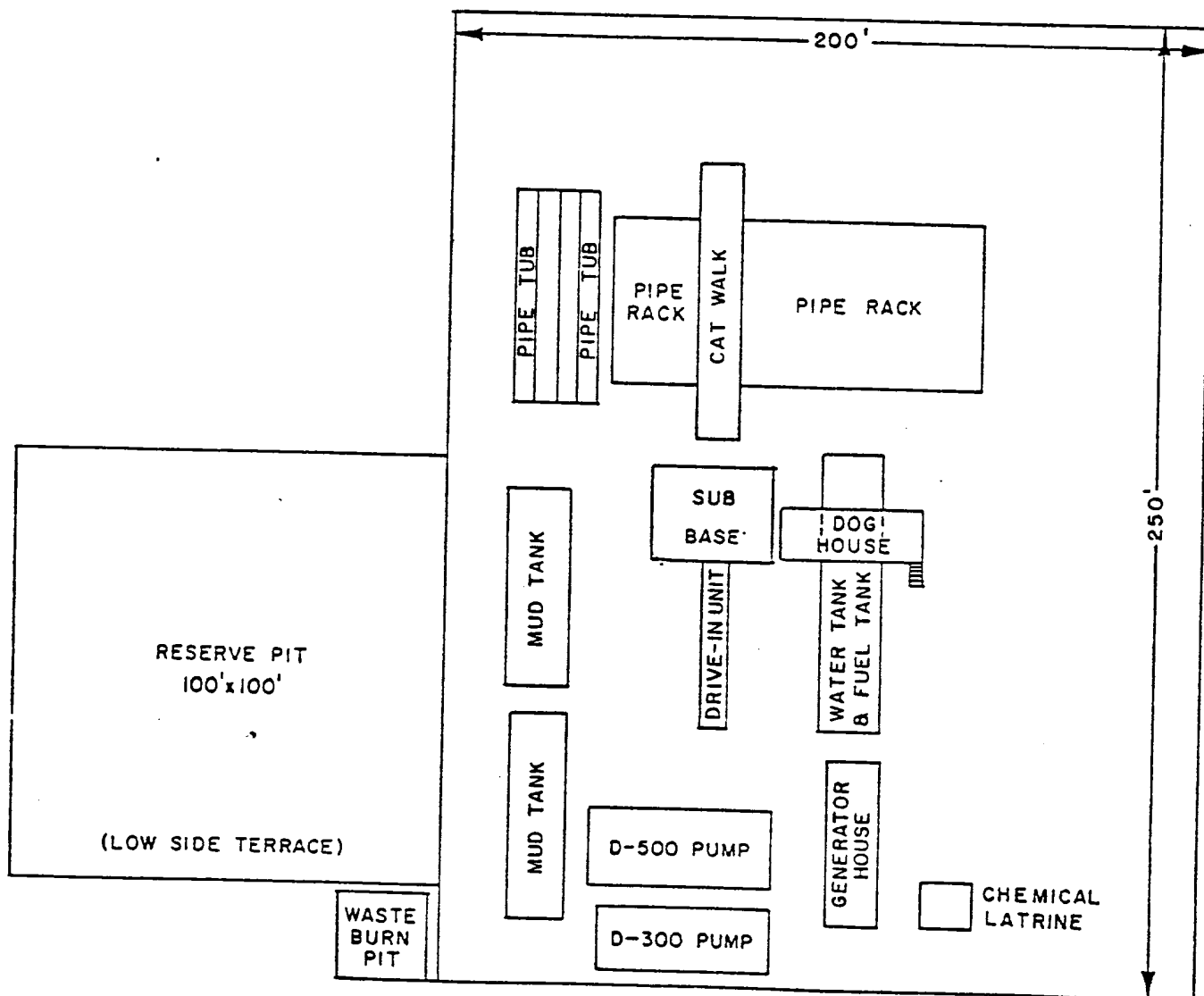
San Juan County, New Mexico

1. Well
2. Dead Men
3. Prod. Unit
4. Water Pit
5. 300 bbl. Oil Tank
6. Water Pit
7. 2" Buried flow line
8. 1½" Oil Line
9. 1½" Water Line



1" equals 50'

Fence .////.



ATTACHMENT "D"

DEVELOPMENT PLAN FOR SURFACE USE

CONSOLIDATED OIL & GAS, INC. - OPERATOR

NANCE No. 1-E

SF 078463

SE SW Sec. 27, T31N, R13W

San Juan County, New Mexico