

UNITED STATES
DEPARTMENT OF THE INTERIOR
GEOLOGICAL SURVEY

APPLICATION FOR PERMIT TO DRILL, DEEPEN, OR PLUG BACK

1a. TYPE OF WORK DRILL <input checked="" type="checkbox"/> DEEPEN <input type="checkbox"/> PLUG BACK <input type="checkbox"/>			3. LEASE DESIGNATION AND SERIAL NO. NM 021123		
b. TYPE OF WELL OIL WELL <input type="checkbox"/> GAS WELL <input checked="" type="checkbox"/> OTHER <input type="checkbox"/> SINGLE ZONE <input checked="" type="checkbox"/> MULTIPLE ZONE <input type="checkbox"/>			8. IF INDIAN, ALLOTTEE OR TRIBE NAME		
2. NAME OF OPERATOR Consolidated Oil & Gas, Inc.			7. UNIT AGREEMENT NAME		
3. ADDRESS OF OPERATOR 1860 Lincoln Street, Denver, Colorado 80295			8. FARM OR LEASE NAME Leeds		
4. LOCATION OF WELL (Report location clearly and in accordance with any State requirements.) At surface 1600' FNL & 1000' FWL At proposed prod. zone Same			9. WELL NO. 1-E		
14. DISTANCE IN MILES AND DIRECTION FROM NEAREST TOWN OR POST OFFICE* 4 miles west of LaPlata PO, New Mexico			10. FIELD AND POOL, OR WILDCAT Basin Dakota		
15. DISTANCE FROM PROPOSED* LOCATION TO NEAREST PROPERTY OR LEASE LINE, FT. (Also to nearest drig. unit line, if any) 1000'			11. SEC., T., R., M., OR BLK. AND SURVEY OR AREA Sec. 8, T31N, R12W		
16. NO. OF ACRES IN LEASE* 320			12. COUNTY OR PARISH 13. STATE San Juan New Mexico		
17. NO. OF ACRES ASSIGNED TO THIS WELL w/320			18. DISTANCE FROM PROPOSED* LOCATION TO NEAREST WELL, DRILLING COMPLETED, OR APPLIED FOR, ON THIS LEASE, FT. 2100'		
19. PROPOSED DEPTH 7100'			20. ROTARY OR CABLE TOOLS Rotary		
21. ELEVATIONS (Show whether DF, RT, GR, etc.) GL 5899'			22. APPROX. DATE WORK WILL START* May 25, 1980		

23. PROPOSED CASING AND CEMENTING PROGRAM

SIZE OF HOLE	SIZE OF CASING	WEIGHT PER FOOT	SETTING DEPTH	QUANTITY OF CEMENT
12-1/4"	8-5/8"	24.0	250'	200 sx.
7-7/8"	5-1/2"	15.5	7100'	

1. Drill 12-1/4" hole to \pm 250'. Run and set 8-5/8" casing. Circulate cement to surface.
2. WOC 12 hours.
3. Install BOPs. Pressure test casing and preventors to 1000 psi.
4. Drill 7-7/8" hole to \pm 7100' with fresh water gel mud. Run electric and radioactive logs.
5. Run and set 5-1/2" casing with stage collars and cement.
6. Selectively perforate and stimulate Dakota formation and complete as required by regulations.

This action is subject to administrative
appeal pursuant to 30 CFR 290.

IN ABOVE SPACE DESCRIBE PROPOSED PROGRAM: If proposal is to deepen or plug back, give data on present productive zone and proposed new productive zone. If proposal is to drill or deepen directionally, give pertinent data on subsurface locations and measured and true vertical depths. Give blowout preventer program, if any.

24. SIGNED [Signature] TITLE Senior Production Engr. DATE May 5, 1980

(This space for Federal or State official use)

PERMIT NO. _____ APPROVAL DATE _____

APPROVED BY [Signature] TITLE _____ DATE _____

CONDITIONS OF APPROVAL, IF ANY _____

DISTRICT ENGINEER

NM000

All distances must be from the outer boundaries of the Section.

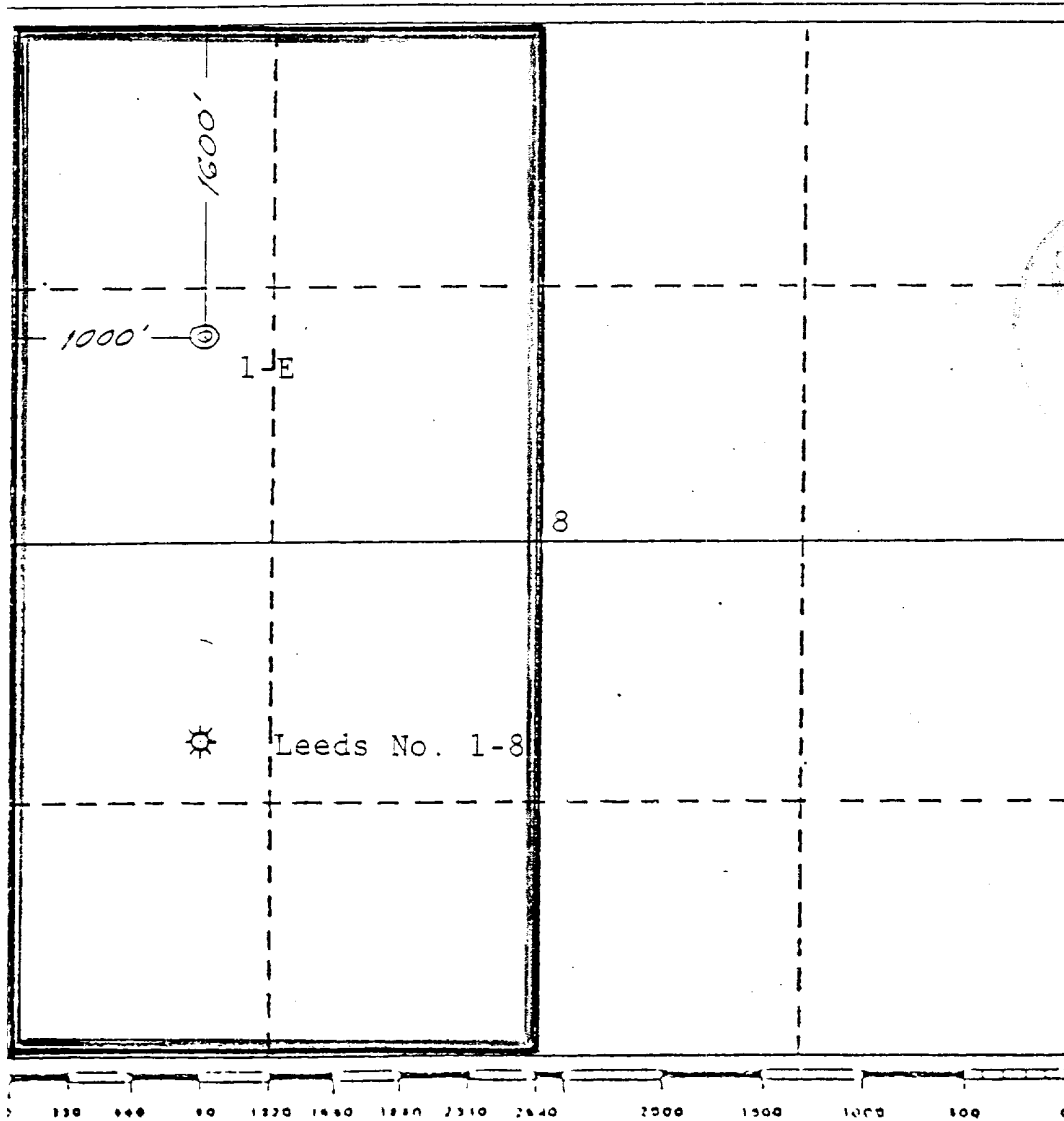
Operator CONSOLIDATED OIL & GAS, INC.			Lease LEEDS		Well No. 1-E
Unit Letter E	Section 8	Township 31 NORTH	Range 12 WEST	County SAN JUAN	
Actual Postage Location of Well:					
1600 feet from the NORTH line and		1000 feet from the WEST line			
Ground Level Elev. 5899	Producing Formation Dakota	Pool Basin Dakota		Dedicated Acreage: 320	Acreage

1. Outline the acreage dedicated to the subject well by colored pencil or hatchure marks on the plat below.
2. If more than one lease is dedicated to the well, outline each and identify the ownership thereof (both as to working interest and royalty).
3. If more than one lease of different ownership is dedicated to the well, have the interests of all owners been consolidated by communitization, unitization, force-pooling, etc?

☐ Yes ☐ No If answer is "yes," type of consolidation _____

If answer is "no," list the owners and tract descriptions which have actually been consolidated. (Use reverse side of this form if necessary.) _____

No allowable will be assigned to the well until all interests have been consolidated (by communitization, unitization, forced-pooling, or otherwise) or until a non-standard unit, eliminating such interests, has been approved by the Division.



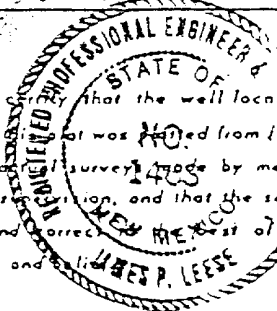
CERTIFICATION

I hereby certify that the information contained herein is true and complete to the best of my knowledge and belief.

Name **Merle J. Savage**
Position **Sr. Production Engineer**
Company **Consolidated Oil & Gas, Inc.**

Date **May 5, 1980**

I hereby certify that the well location shown on this plat was **NO** taken from field notes of a **NO** survey made by me or under my supervision, and that the same is true and correct to the best of my knowledge and belief.



Date Surveyed **February 29, 1980**

Registered Professional Engineer
and/or Land Surveyor

James P. Leese

Certificate No.

1463

DEVELOPMENT PLAN FOR SURFACE USE

LEEDS No. 1-E

Consolidated Oil & Gas, Inc. - Operator

NM 021123
SW NW, Sec. 8, T31N, R12W
San Juan County, New Mexico

1. Existing Roads

See enclosed topographic map (Attachment "A") which shows existing improved and unimproved roads.

2. Planned Access Roads

See enclosed topographic map (Attachment "A"). The new road will be approximately 500' long and 12' wide approaching well from the north.

3. Location of Existing Wells

See enclosed lease map (Attachment "B").

4. Location of Existing and/or Proposed Facilities

See enclosed lease map (Attachment "B") showing location of wells and facilities operated by Consolidated Oil & Gas, Inc. If production is encountered, the tank battery and other required producing equipment will be located per attached completion plat (Attachment "C").

5. Location and Type of Water Supply

Water for drilling will be trucked approximately fifteen miles from an irrigation canal in Aztec, New Mexico or purchased locally and transported via irrigation pipe if water is available.

6. Source of Construction Materials

No additional construction material will be required.

7. Methods of Handling Waste Disposal

All waste material will be contained by earthen and steel pits. Earthen pits will be subsequently backfilled and buried. A portable chemical toilet will be furnished for drilling personnel.

8. Ancillary Facilities

No separate drill campsites are proposed.

9. Wellsite Layout

The drilling site location will be graded and will approximate 200' x 250' with natural drainage to the northwest. Care will be taken while grading to control erosion.

10. Plans for Restoration of Surface

A. Following drilling and completion operations, all equipment and material not needed for operations will be removed. Pits containing fluid will be fenced until filled with any additional pits filled and the location cleaned of all trash and junk.

B. After abandonment, any special rehabilitation and/or revegetation requirements (reseed with seed mixture No. 2) will be complied with and accomplished as expeditiously as possible. All pits should be filled and leveled within 90 days after abandonment.

11. Other Information

The location is on the side of a slope in a rolling hills area, with sandy clay topsoil and vegetation consisting of scattered scrub cedar and pine as well as rabbit brush and native grasses. No residences or structures are nearby. The surface rights are owned by F. F. Montoya, LaPlata, New Mexico. If, during operations, any historic or prehistoric ruin, monument or site, or any object of antiquity is discovered, work will be suspended and the discovery will be reported to the appropriate regulatory agency.

12. Operator's Representative

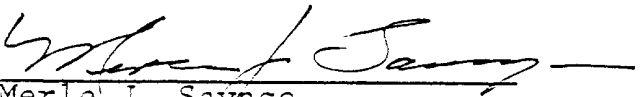
Consolidated Oil & Gas, Inc.
Merle J. Savage, Senior Production Engineer
1860 Lincoln Street, Suite 1300
Denver, Colorado 80295
Phone (303) 861-5252

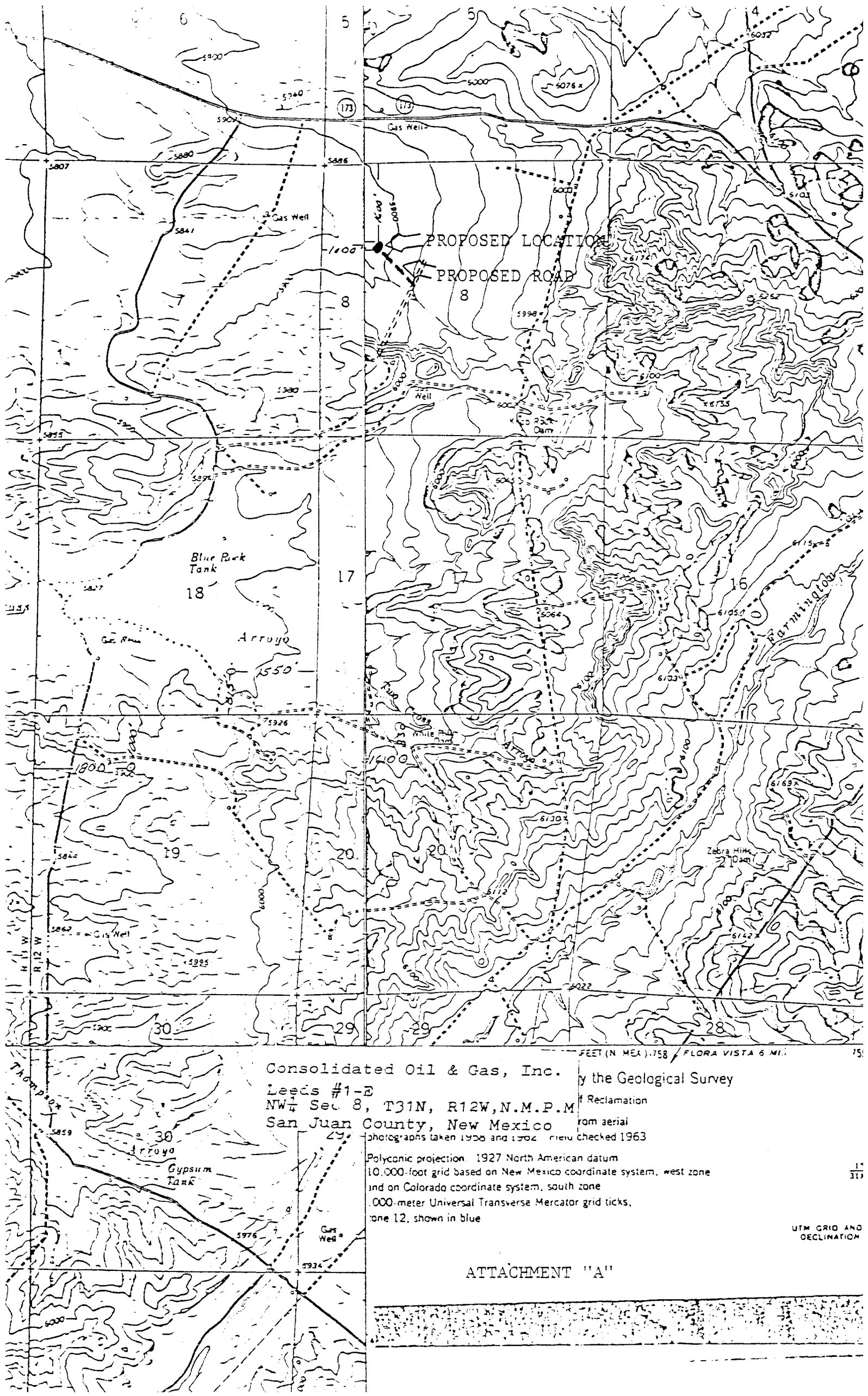
13. Certification

I hereby certify that I, or persons under my direct supervision, have inspected the proposed drillsite and access route; that I am familiar with the conditions which presently exist; that the statements made in this plan are, to the best of my knowledge, true and correct; and that the work associated with the operations proposed herein will be performed by Consolidated Oil & Gas, Inc. and its contractors and sub-contractors in conformity with this plan and the terms and conditions under which it is approved.

May 5, 1980

Date


Merle J. Sayage
Senior Production Engineer



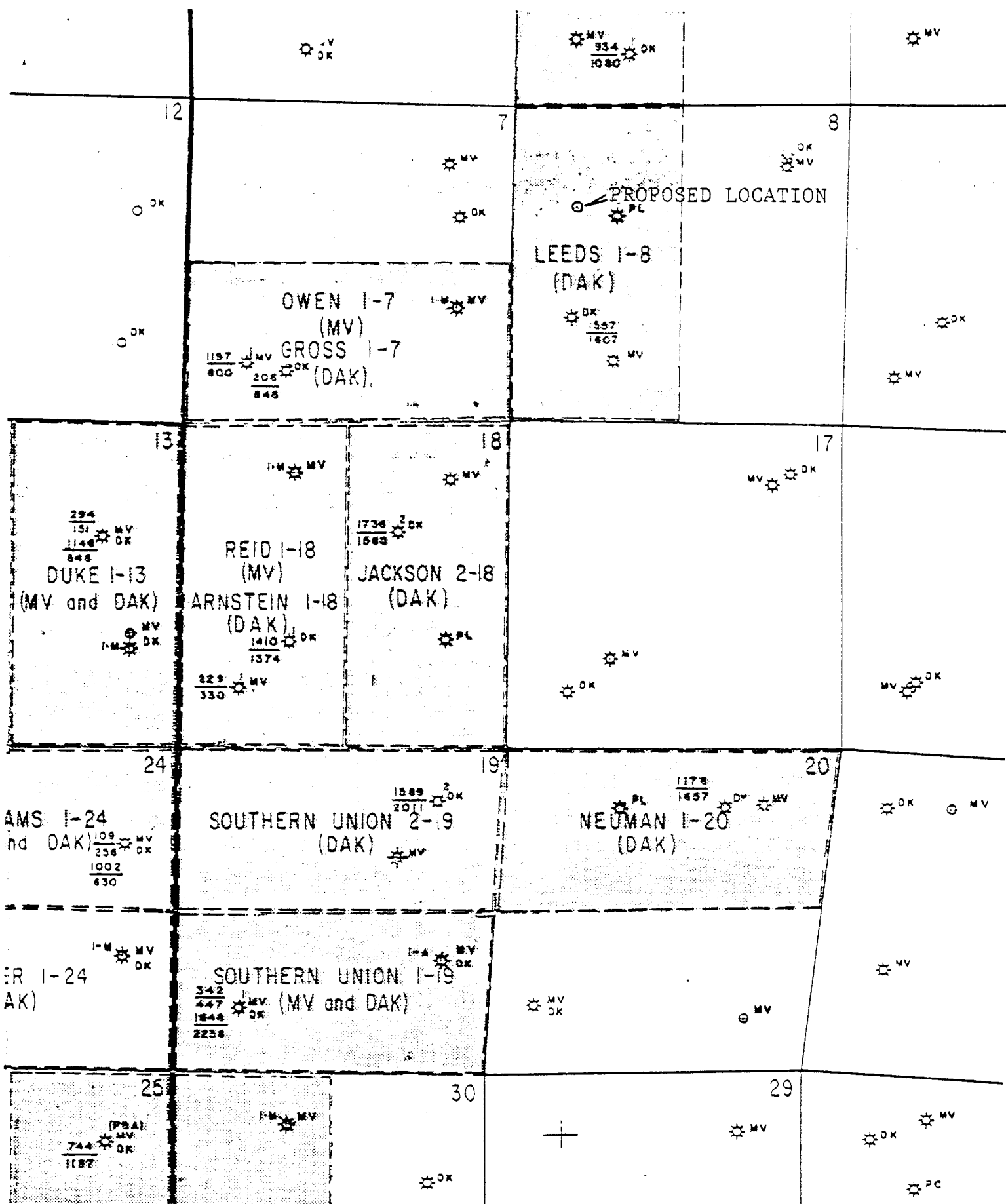
Consolidated Oil & Gas, Inc.
Leeds #1-E
NW 1/4 Sec 8, T31N, R12W, N.M.P.M.
San Juan County, New Mexico

by the Geological Survey
Reclamation
from aerial
photographs taken 1958 and 1962
rechecked 1963

Polyconic projection, 1927 North American datum
10,000-foot grid based on New Mexico coordinate system, west zone
and on Colorado coordinate system, south zone
1,000-meter Universal Transverse Mercator grid ticks,
zone 12, shown in blue

UTM GRID AND
DECLINATION

ATTACHMENT "A"



ATTACHMENT "B"

Development Plan for Surface Use

Consolidated Oil & Gas, Inc.

Leeds No. 1-E

SW NW Sec. 8, T31N, R12W
San Juan County, New Mexico

ATTACHMENT "C"

DEVELOPMENT PLAN FOR SURFACE USE

CONSOLIDATED OIL & GAS, INC. - OPERATOR

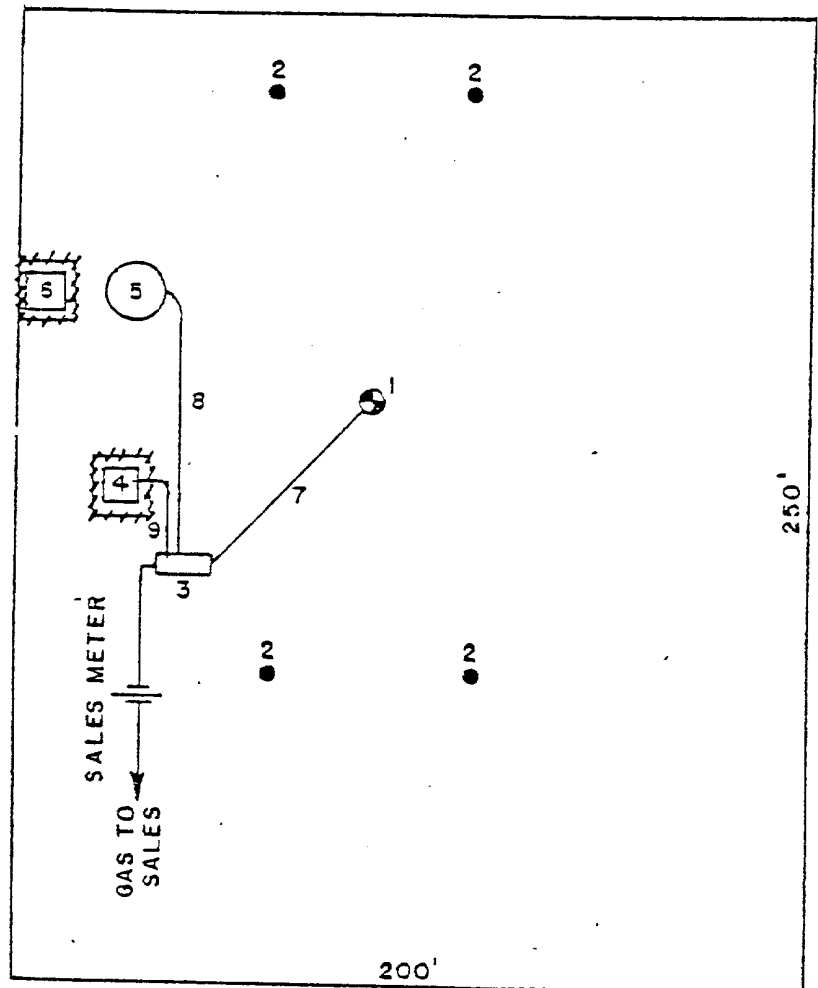
LEEDS No. 1-E

NM 021123

SW NW, Sec. 8, T31N, R12W

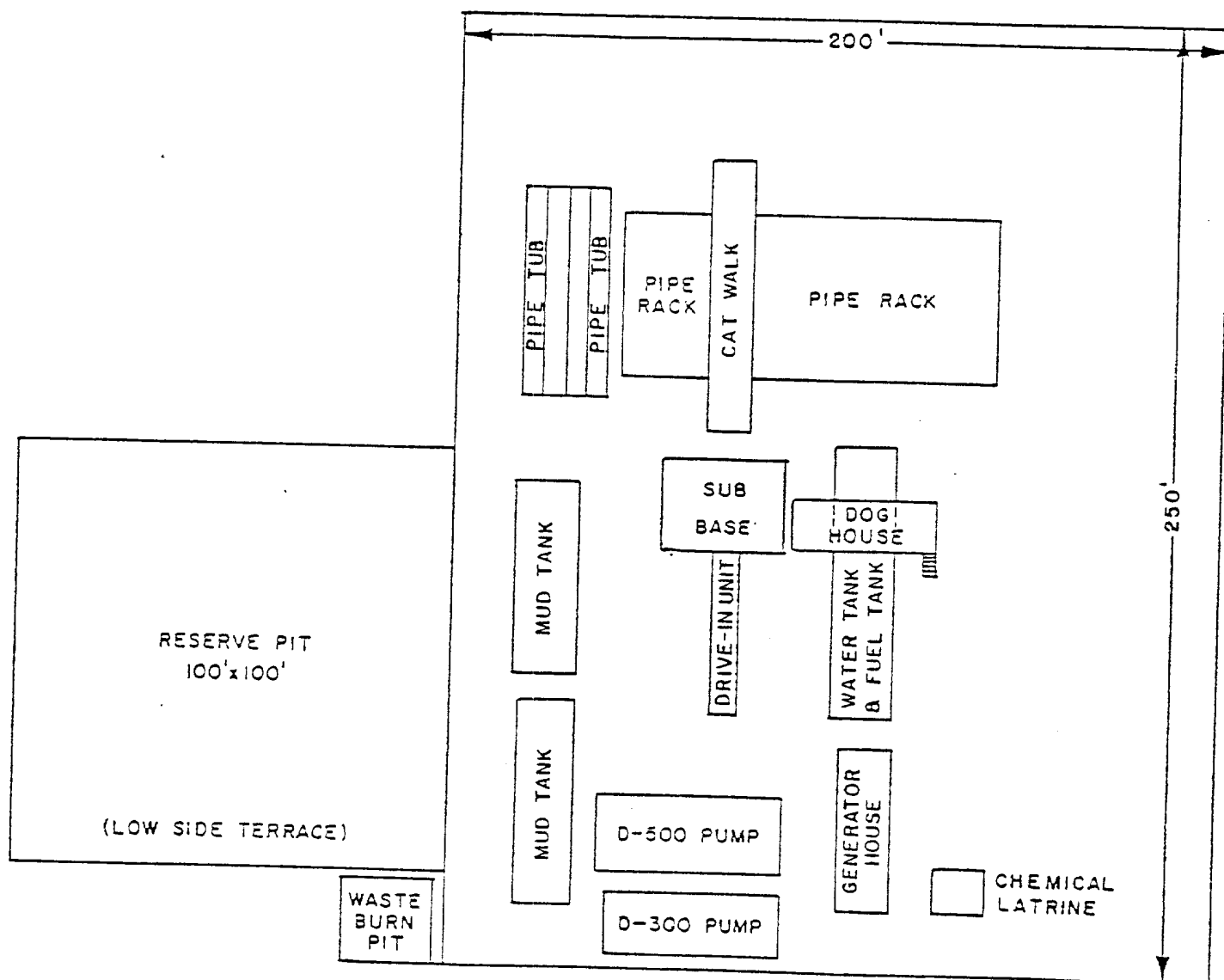
San Juan County, New Mexico

1. Well
2. Dead Men
3. Prod. Unit
4. Water Pit
5. 300 bbl. Oil Tank
6. Water Pit
7. 2" Buried flow line
8. 1½" Oil Line
9. 1½" Water Line



1" equals 50'

Fence - - - - -



ATTACHMENT "D"

DEVELOPMENT PLAN FOR SURFACE USE

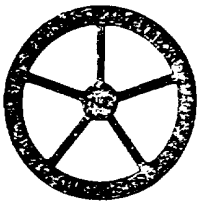
CONSOLIDATED OIL & GAS, INC. - OPERATOR

LEEDS No. 1-E

NM 021123

SW NW, Sec. 8, T31N, R12W

San Juan County, New Mexico



Consolidated Oil & Gas, Inc.

LINCOLN TOWER BUILDING
1860 LINCOLN STREET
DENVER, COLORADO 80295
(303) 861-5252

May 5, 1980

U. S. Geological Survey
P. O. Box 959
Farmington, New Mexico 87401

Re: Application for Permit to Drill
Leeds No. 1-E
San Juan County, New Mexico

Gentlemen:

Following is the information requested in NTL-6 to accompany the permit to drill:

1. Location: 1600' FNL & 1000' FWL, "E", Sec. 8, T31N, R12W
San Juan County, New Mexico
2. Elevation of Unprepared Ground: 5899'
3. Geologic Name of Surface Formation: Nacimiento
4. Type of Drilling Tools: Rotary
5. Proposed Drilling Depth: 7100'
6. Estimated Geologic Markers:
7. Anticipated Gas & Oil

Ojo Alamo	310'	
Pictured Cliffs	2290'	X
Cliff House	3820'	X
Pt. Lockout	4610'	X
Greenhorn	6675'	
Dakota	6800'	X

8. Casing Program and Setting Depth:

	<u>Size</u>	<u>Weight</u>	<u>Grade</u>	<u>Condition</u>	<u>Setting Depth</u>
Surface	8-5/8"	24.0#	K-55	New	250'
Production	5-1/2"	15.5#	K-55	New	7100'

9. Casing Setting Depth and Cementing:

Surface casing will be set at 250'. Cement will be circulated to surface with approximately 200 sx. Class "B" neat cement containing 2% CaCl_2 .

Cementing Prognosis:

Production casing will be run to total depth. Two stage collars will be run in the casing string at approximately 1350' and 4900'. The casing will be cemented in three stages as follows:

1st Stage: 60 sx. 65/35 Pozmix with 12% gel, tailed in with 160 sx. 50/50 Pozmix with 4% gel and 0.5% FLA.

2nd Stage: 120 sx. 65/35 Pozmix with 6% gel, tailed in with 160 sx. 50/50 Pozmix with 4% gel and 0.4% FLA.

3rd Stage: 240 sx. 65/35 Pozmix with 12% gel, tailed in with 50 sx. 50/50 Pozmix with 2% gel and 0.4% FLA.

Note: Exact volume of cement to be determined after running Caliper log.

10. Pressure Control Equipment: See attached diagram "A".

11. Circulating Media: 0-250' fresh water spud mud; 250'-TD fresh water, low solid mud with following properties:

Viscosity 32-28 sec., water loss 20-6 cc, weight 8.5-9.0 ppg with heavier weights if required by well conditions.

12. Testing, Logging and Coring Programs:

a. Open hole logs will be run prior to running production casing.

b. Coring is not planned.

13. Abnormal Pressure or Temperature and Hydrogen Sulfide Gas:

We do not anticipate abnormal pressure, temperature or hydrogen sulfide gas; however, a remote control blowout preventer as shown on attached diagram "A" will be installed.

14. Anticipated Starting Date: Drilling operations should start shortly after May 25, 1980.

15. Other Facets of the Proposed Operations: None

Yours very truly,

CONSOLIDATED OIL & GAS, INC.



Merle J. Savage
Senior Production Engineer

MJS:lt
Attach.

DIAGRAM "A"

U.S.G.S. APPLICATION FOR PERMIT
TO DRILL

CONSOLIDATED OIL & GAS, INC. - OPERA

Leeds No. 1-E

NM 021123

SW NW Sec. 8, T31N, R12W

San Juan County, New Mexico

