

UNITED STATES
DEPARTMENT OF THE INTERIOR
GEOLOGICAL SURVEY

APPLICATION FOR PERMIT TO DRILL, DEEPEN, OR PLUG BACK

1. TYPE OF WORK

DRILL ☒DEEPEN ☐PLUG BACK ☐

2. TYPE OF WELL

OIL
WELL ☒GAS
WELL ☐OTHER ☐SINGLE
ZONE ☐MULTIPLE
ZONE ☐

3. NAME OF OPERATOR

B. O. A. Oil & Gas Company

4. ADDRESS OF OPERATOR

3539 E. 30th Street - Farmington, N.M.

5. LOCATION OF WELL (Report location clearly and in accordance with any State requirements.)*

At surface

At proposed prod. zone

6. DISTANCE IN MILES AND DIRECTION FROM NEAREST TOWN OR POST OFFICE*

Waterflow, New Mexico -- 8 miles

7. DISTANCE FROM PROPOSED*

LOCATION TO NEAREST

PROPERTY OR LEASE LINE, FT.

(Also to nearest drilg. unit line, if any)

8. DISTANCE FROM PROPOSED LOCATION*

TO NEAREST WELL, DRILLING, COMPLETED,

OR APPLIED FOR, ON THIS LEASE, FT.

9. ELEVATIONS (Show whether DF, RT, GR, etc.)

5443

10.

PROPOSED CASING AND CEMENTING PROGRAM

SIZE OF HOLE	SIZE OF CASING	WEIGHT PER FOOT	SETTING DEPTH	QUANTITY OF CEMENT
12 1/4	8 5/8	32	100'	75 SKS Class B 2% cc
7 7/8	5 1/2	14	2000'	75 SKS

(SEE ATTACHMENTS)

APPROVED FOR A PERIOD
NOT TO EXCEED 1 YEAR.

IN ABOVE SPACE DESCRIBE PROPOSED PROGRAM: If proposal is to deepen or plug back, give data on present productive zone and proposed new productive zone. If proposal is to drill or deepen directionally, give pertinent data on subsurface locations and measured and true vertical depths. Give blowout preventer program, if any.

24.

SIGNED

TITLE Operator

DATE

Oct

Sept. 12, 1980

(This space for Federal or State office use)

APPROVED

PERMIT NO.

APPROVAL DATE

APPROVED BY

OCT 15 1980

TITLE

DATE

CONDITIONS OF APPROVAL, IF ANY

JOHN L. PRICE
DISTRICT OIL & GAS SUPERVISOR

State

*See Instructions On Reverse Side

All distances must be from the outer boundaries of the section.

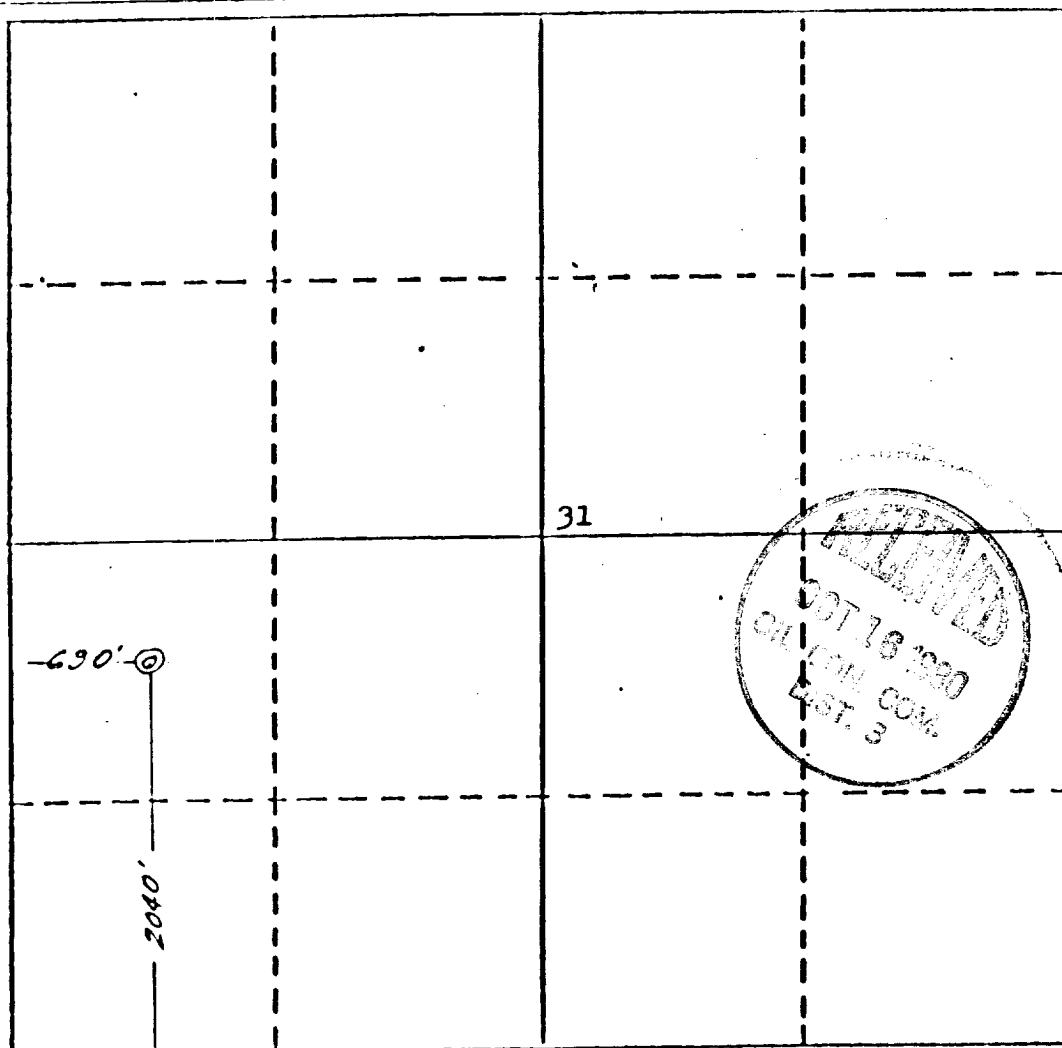
Operator B.O.A. Oil & Gas Co.		Lease UTE TRIBAL		Well No. 17
Unit Letter L	Section 31	Township 31 NORTH	Range 15 WEST	County SAN JUAN
Actual Footage Location of Well: 2040 feet from the SOUTH line and 690 feet from the WEST line				
Ground Level Elev. 5443	Producing Formation Gallup	Pool Verde Gallup	Dedicated Acres 40	

1. Outline the acreage dedicated to the subject well by colored pencil or hatchure marks on the plat below.
2. If more than one lease is dedicated to the well, outline each and identify the ownership thereof (both as to working interest and royalty).
3. If more than one lease of different ownership is dedicated to the well, have the interests of all owners been consolidated by communitization, unitization, force-pooling, etc?

☐ Yes ☒ No If answer is "yes," type of consolidation _____

If answer is "no," list the owners and tract descriptions which have actually been consolidated. (Use reverse side of this form if necessary.) _____

No allowable will be assigned to the well until all interests have been consolidated (by communitization, unitization, forced-pooling, or otherwise) or until a non-standard unit, eliminating such interests, has been approved by the Division.



CERTIFICATION

I hereby certify that the information contained herein is true and complete to the best of my knowledge and belief.

Ralph Abbott

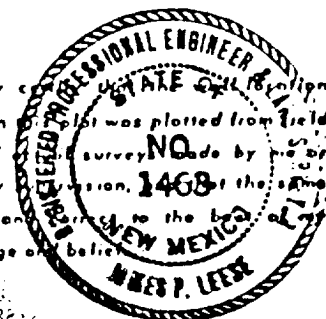
Name
Ralph Abbott

Position
Operator

Company
B.O.A. Oil & Gas Co.

Date
Oct, 10, 1980

I hereby certify that the information shown on this plat was plotted from field notes of survey No. **1468** under my commission, and the same is true and correct to the best of my knowledge and belief.

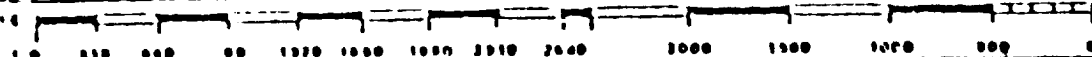


Date Surveyed
12 Oct 1980

Registered Professional Engineer and/or Land Surveyor

James P. Lease
James P. Lease

Certificate No.
1463



B. O. A. OIL & GAS COMPANY

FORMATION INFORMATION AND DRILLING PRACTICES

WELL:

Ute B No. 17

LOCATION:

2040' FSL & 690 FWL
Sec. 31, T31N, R15W
San Juan County, N.M.

LEASE NO:

14-20-604-90

1. Surface formation.

Menefee

2. Estimated tops of important geologic markers.

Point Lookout	502
Mancos	886
Gallup	1800

3. Hydro-carbon, water or mineral bearing formation.

1800

4. Proposed casing program.

0-100' 8 5/8", 32# new casing. Cement with 100 sk. Clas B
 + 2%a C C12.

0-1600' Open hole (drill with Cable Tool)

5. Specifications for pressure control equipment.

The attached schematic shows the type of blow-out preventer to be used while drilling. The unit will be tested to 200 psi as soon as possible after it's installation on the surface pipe. Testing will be done with the rig pump. This is a manual type preventer, and it's operation will be manually checked when practical.

6. Drilling fluids.

<u>Depth</u>	<u>Type</u>	<u>Viscosity</u>	<u>Weight</u>	<u>Fluid Loss</u>
0-100	Gel-lime	35-55	8.9-9.2	N/C
100-1600	Gel-Chem	30-40	8.6-9.5	10
1600-1800	Water			

7. Auxiliary equipment.

a. Bit float.

b. Full opening valve for stabbing in drill pipe when the kelly is not in use.

8. Logging - Coring - Drill Stem Testing.

Logging: Induction Electric Log, Formation Compensated
Density, Gamma Ray, Caliper

Coring: None

Drill Stem Testing: None

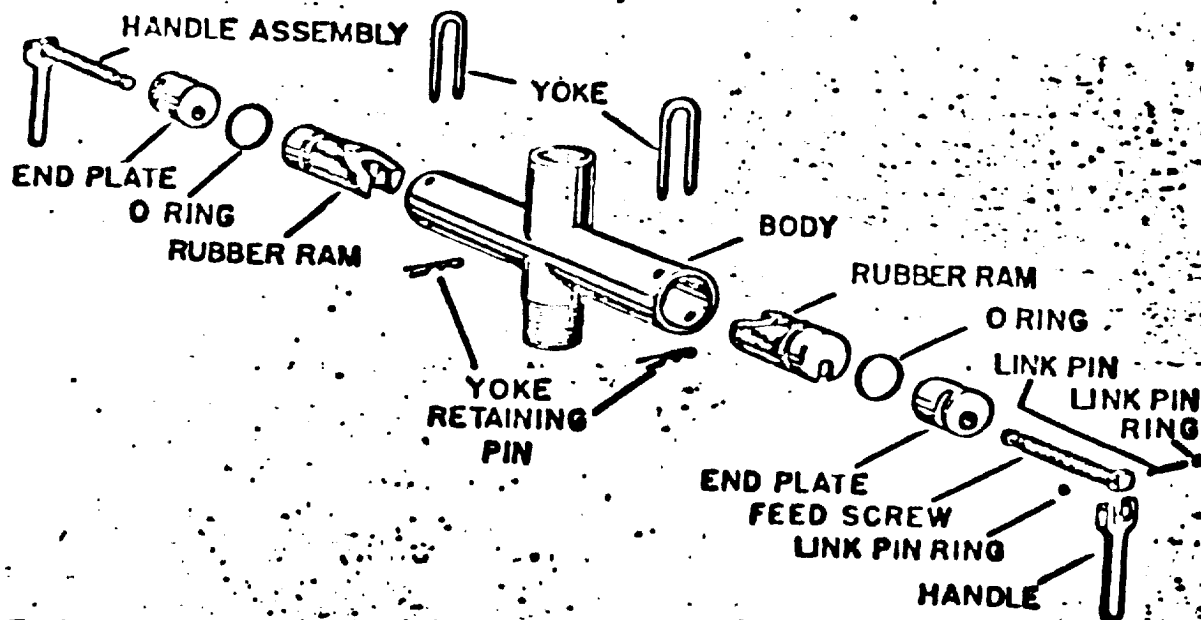
9. Abnormal temperatures, pressures, or hazardous conditions.

None expected.

10. Starting date.

Anticipated starting date is October 18, 1980. Approximately twenty-five days will be needed to build roads and location and drill the well to total depth. If commercial, completion will commence immediately and require approximately seven days to complete.

BLOWOUT PREVENTERS



ATTACHMENT TO POINT 5
API SERIES 6" 600

B. O .A. OIL & GAS COMPANY

SURFACE DEVELOPMENT PLAN

WELL:

Ute B No. 17

LOCATION:

2040' FSL & 690 FEL
Sec. 31, T31N, R15W
San Juan County, N.M.

LEASE NO:

14-02-604-90

1. Existing roads. (Shown in green)

The attached topographic map shows all existing roads within one mile of the proposed location. Access will be made to an existing road 600' west of the location.

2. Planned access road. (Shown in red)

The planned access road will be approximately 600' long and 20' wide. Maximum grade will be 5%. No turnouts or culverts will be required. Water bars will be used to aid drainage and prevent erosion. No surfacing material will be required. No gates, cattle guards, or fences will be crossed. No cuts or fills should be required.

3. Location of existing wells.

All wells, (water, abandoned, disposal, and drilling) are shown and so labeled on the attached section layout.

4. Location of tank batteries, production facilities and production, gathering and service lines.

All production facilities are to be contained within the proposed location. B. O. A. does not own or control any such facilities in the area.

5. Location and type of water supply.

Water for drilling will be trucked from the San Juan River located fifteen miles southeast of location. This water is not on federal land.

6. Source of construction material.

Any construction material required for road or location will be excess material accumulated during building of such sites.

7. Methods of handling waste disposal.

(Refer to attached well site layout.)

All burnable material will be burned in the trash pit when conditions permit. All nonburnable material (drilling fluids, cuttings, chemicals, etc.) will be held in the reserve pit and buried when dry. Any oil produced while drilling will be trucked from the location prior to leaving the pit to dry. Pits will be fenced during dryout time, then completely back-filled with dirt prior to preparing the location for production or abandonment.

8. Ancillary facilities.

No ancillary facilities are planned.

9. Well site layout.

The attached layout shows the drilling rig with all facilities. Cut and filld required is also indicated.

10. Plans for restoration of surface.

Restoration of well site and access road will begin within ninety days of well completion, weather permitting.

Should the well be abandoned, the drilling site will be reshaped to it's approximate former contour. The access road will be plowed and leveled. Both site and road will have top soil replaced and will be reseeded when germination can occur.

In either case, clean up of the site will include burning any safely burnable material, filling of all pits, carrying away of all nonburnable material and chemicals that cannot be buried. Any oil that has accumulated on the pits will be trucked away.

11. Other information.

General topography of the area may be seen on the attached map.

The drilling site is flat and is covered with sage brush and other native grasses. There are no creeks, rivers or ponds in the area. The soil is Sandy Loam. Small animals and sheep inhabit the area.

The surface is administered by The Bureau of Indian Affairs, and belongs to the Ute Mountain Tribe.

There are no occupied dwellings in the area.


There are no archaeological or cultural sites visible on the location. The archaeologist's report is forthcoming.

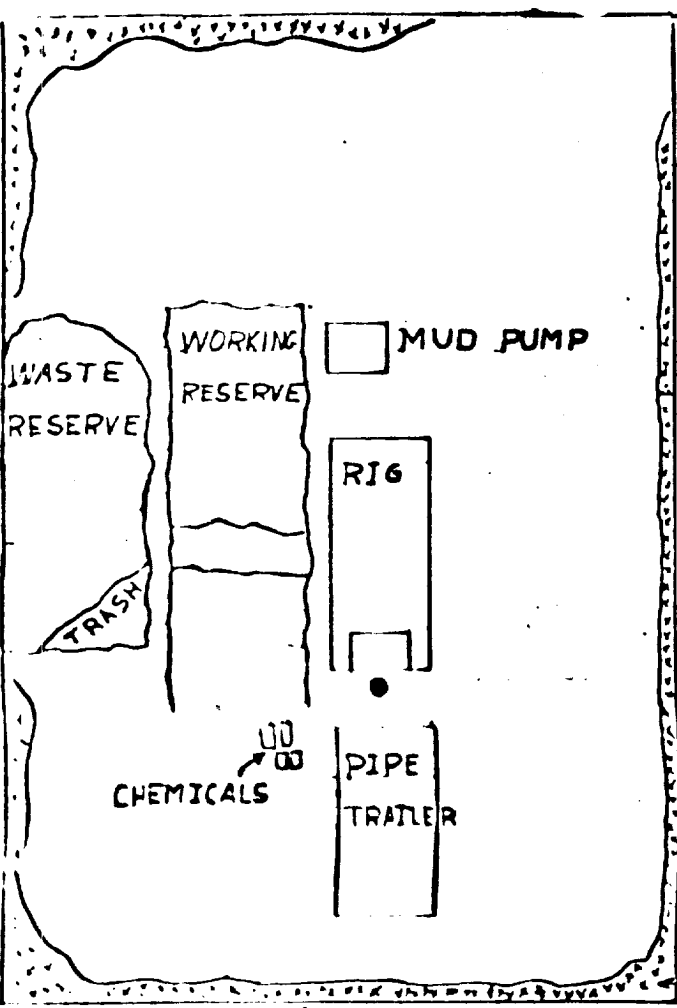
12.

Ralph G. Abbott
B. O. A. Oil & Gas Company
3539 E. 30th
Suite 108
Farmington, New Mexico 87401
Telephone: (505) 325-4681

13. I hereby certify that I, or persons under my direct supervision, have inspected the proposed drill site and access route; that I am familiar with the conditions which presently exists; that the statements made in the plan are, to the best of my knowledge, true and correct; and that the work associated with the operations proposed herein will be performed by B. O. A. Oil & Gas Company and its contractors and sub-contractors in conformity with this plan and the terms and conditions under which it is approved.

Oct.
~~September~~ 12, 1980

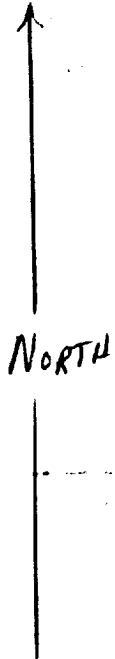

RALPH G. ABBOTT



PLAN VIEW 1"=30'
ALL PITS-EARTHEN

location grade

Access Road



location grade

SOIL MATERIAL STOCKPILE

Vertical Scale 1"=10'

WELL SITE LAYOUT

Ute Mountain

Ute "B"

Well 17

Verde Gallup Field

B.O.A. Oil & Gas
108 Northwest Energy Building
Farmington, New Mexico
87401

Well # 17 Ute "B" Lease

16 West

15 West

D	C	B	A	D	C	B	A	D	C	B	A
E	F	G	H	E	F	G	H	E	F	G	H
L	K	J	I	L	K	J	I	L	K	J	I
M	N	O	P	M	N	O	P	M	N	O	P
D	C	B	A	D	C	B	A	D	C	B	A
E	F	G	H	E	F	G	H	E	F	G	H
L	K	J	I	L	K	J	I	L	K	J	I
M	N	O	P	M	N	O	P	M	N	O	P
D	C	B	A	D	C	B	A	D	C	B	A
E	F	G	H	E	F	G	H	E	F	G	H
L	K	J	I	L	K	J	I	L	K	J	I
M	N	O	P	M	N	O	P	M	N	O	P
D	C	B	A	D	C	B	A	D	C	B	A
E	F	G	H	E	F	G	H	E	F	G	H
L	K	J	I	L	K	J	I	L	K	J	I
M	N	O	P	M	N	O	P	M	N	O	P

▲ Existing Wells
▲ Proposed Wells

